





# 25 Glenfield Avenue, Bitterne, Southampton, SO18 4EQ

**Offers Over £400,000**

Stanford Estate Agents are delighted to offer for sale this lovely four double bedroom, bay fronted, semi detached family home, ideally situated in this highly sought after location. This fantastic property offers spacious and versatile accommodation including a good sized lounge, an 18ft fitted kitchen/diner, upstairs family bathroom and a good sized secluded rear garden. Benefits include a garage, off road parking to the front and no forward chain. This property would make a perfect family home and internal viewings are strongly recommended to avoid disappointment.

**Entrance Hall:**  
Stairs to first floor landing, double radiator, door to lounge and kitchen/diner.

**Lounge:** (14'10" x 11'10")  
Double glazed bay fronted window, double radiator, electric fireplace.

**Kitchen/Diner:** (18'7" x 15'9")  
Open plan family living fitted with a range of modern wall and base level units with rolled edge worksurfaces and breakfast bar, gas hob and double electric oven with stainless steel extractor hood over, stainless steel sink and drainer with mixer tap, space and plumbing for washing machine and dishwasher, space for a fridge/freezer, stainless steel sink drainer, double radiator, ceiling downlighters, double glazed window to side aspect, door to side aspect, double doors to rear aspect

**First Floor Landing:**  
Doors to bedrooms and family bathroom

**Bedroom One:** (14'10" x 12'3")  
Bay fronted double glazed window, double radiator, built in wardrobes.

**Bedroom Two:** (15'9" x 10'2")  
Double glazed window to rear aspect, double radiator, built in shelving/wardrobes.

**Bedroom Three:** (12'8" x 10'2")  
Dual aspect double glazed windows, double radiator,

**Bedroom Four:** (10'6" x 8'5")  
Double glazed window to rear aspect, double radiator.

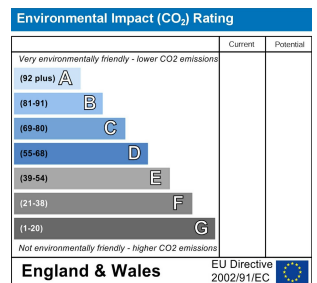
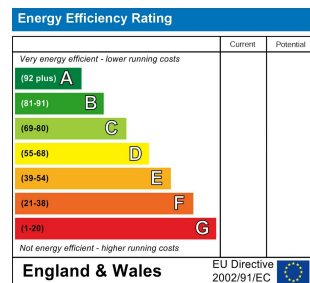
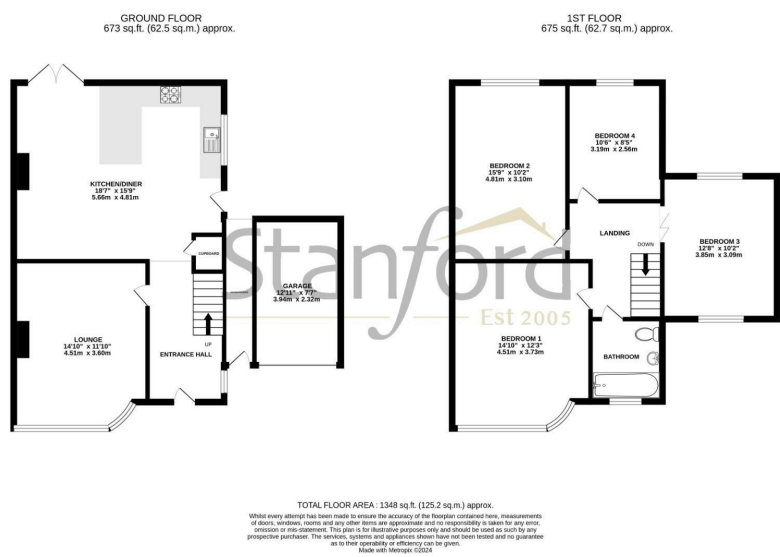
**Family Bathroom:**  
Obscure double glazed window to front aspect, suite comprising panel enclosed bath with shower over, pedestal wash hand basin, low level WC, tiled walls, heated towel rail.

**Front Garden:**  
Laid to lawn with mature flower and shrub borders, path leading to the front door, ample off road parking, driveway to garage.

**Garage:** (12'11" x 7'7")  
Metal up and over door, power and light.

**Rear Garden:**  
Well maintained and secluded garden, mainly laid to lawn with mature shrub borders, panel fence surround, a decked seating and entertaining area and side access. This property offers scope to extend further (STPP)

**Other Information**  
Local Council: Southampton City Council  
Council Tax Band: C  
Sellers Position: No Forward Chain  
Local Primary School: Glenfield Infant School/Beechwood Junior School  
Secondary School : Bitterne Park School



**Tel:** 023 8202 9966  
**Email:** bitterne@stanfordestateagents.co.uk  
**Address:** 394 Bitterne Road, Bitterne, SO18 5RS



While we endeavour to make our sales particulars fair, accurate and reliable, they are only a general guide to the property and, accordingly, if there is any point which is of particular importance to you please contact the office and we will be pleased to check it for you, especially if you are contemplating travelling some distance to view the property. These approximate room sizes are only intended as general guidance. You must verify the dimensions carefully before ordering carpets or any built in furniture. Please note that we have not tested the services or any of the equipment or appliances in this property, accordingly we strongly advise prospective buyers to commission their own survey or service report before finalising their offer to purchase. These particulars are issued in good faith but do not constitute representations of fact or form part of any offer or contract. The matters referred to in these particulars should be independently verified by prospective buyers or tenants. Neither Stanfords nor any of its employees or agents has the authority to make or give any representation or warranty whatever in relation to this property. Your home is at risk if you do not keep up repayments on your mortgage or other loans secured on it. Written quotations are available on

