



16 Buchanan Road, Lordshill, Southampton, SO16 8GN

Guide Price £240,000

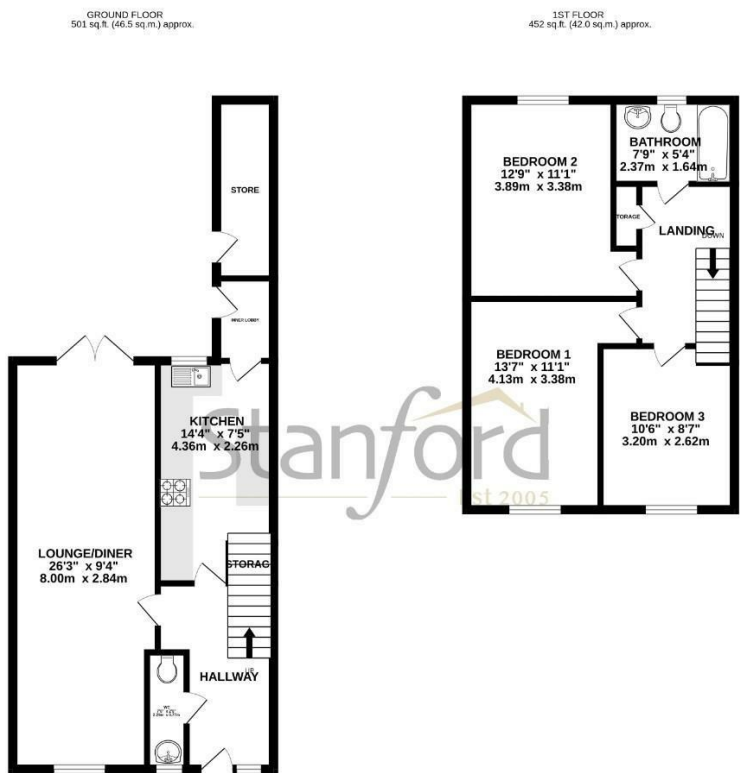
Stanford Estate Agents are delighted to present with no forward chain, this beautifully presented, three bedroom end of terrace house situated in the popular location of Buchanan Road, Lordshill. This spacious property is conveniently situated close to local amenities, Southampton General & Princess Anne Hospitals. An internal viewing is highly recommended.

Accommodation on the ground floor comprises of a spacious 26ft lounge/diner with French doors leading onto the rear garden. The modern fitted kitchen has space for a fridge/freezer, washing machine and tumble dryer and houses a built in dishwasher, there is also a downstairs cloakroom with WC facilities. Upstairs offers space in the form of a modern three piece family bathroom, two double bedrooms and a generous sized third bedroom measuring at 10ft.

Externally, the front is hard standing parking for two cars. The rear garden is enclosed by wood panelled fencing and is mainly decking with a shingle area leading to a garden shed and outside store room.

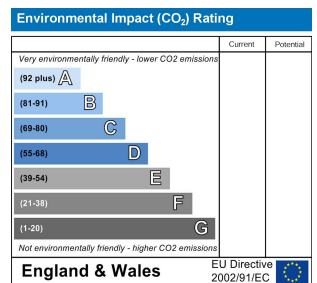
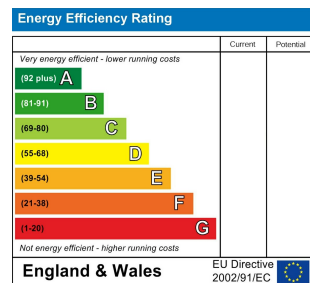
Further Information:

- Local Council: Southampton City Council
- Council Tax Band: B
- Local Primary School: Sinclair Primary School
- Local Secondary School: Oasis Academy Lordshill
- Viewing: Accompanied & By Appointment Only



TOTAL FLOOR AREA: 953 sq ft (88.6 sq m) approx.
 Whilst every attempt has been made to ensure the accuracy of the floor plan, measurements of rooms, sections, rooms and appurtenances are approximate and no responsibility is taken for any error, omission or misstatement. This plan is for information purposes only and should be used as such for any prospective purchase. The services, systems and appliances shown have not been tested and no guarantee is given as to their operation or efficiency can be given.
 Mean call: 0203 8064 7272

Tel: 023 8064 7272
Email: eastleigh@stanfordestateagents.co.uk
Address: 23High Street, Eastleigh, SO50 5LF



While we endeavour to make our sales particulars fair, accurate and reliable, they are only a general guide to the property and, accordingly, if there is any point which is of particular importance to you please contact the office and we will be pleased to check it for you, especially if you are contemplating travelling some distance to view the property. These approximate room sizes are only intended as general guidance. You must verify the dimensions carefully before ordering carpets or any built in furniture. Please note that we have not tested the services or any of the equipment or appliances in this property, accordingly we strongly advise prospective buyers to commission their own survey or service report before finalising their offer to purchase. These particulars are issued in good faith but do not constitute representations of fact or form part of any offer or contract. The matters referred to in these particulars should be independently verified by prospective buyers or tenants. Neither Stanfords nor any of its employees or agents has the authority to make or give any representation or warranty whatever in relation to this property. Your home is at risk if you do not keep up repayments on your mortgage or other loans secured on it. Written quotation are available on

