



Saddlers Close - £500,000

Stanford
Est 2005



2 Saddlers Close, Boyatt Wood, Eastleigh, SO50 4SB

£500,000

Stanford Estate Agents are delighted to offer this spacious, extended, four bedroom, detached house in a sought after location. Located at the bottom of a private driveway benefitting from a private location and being well presented throughout this house would make a delightful family home.

Description



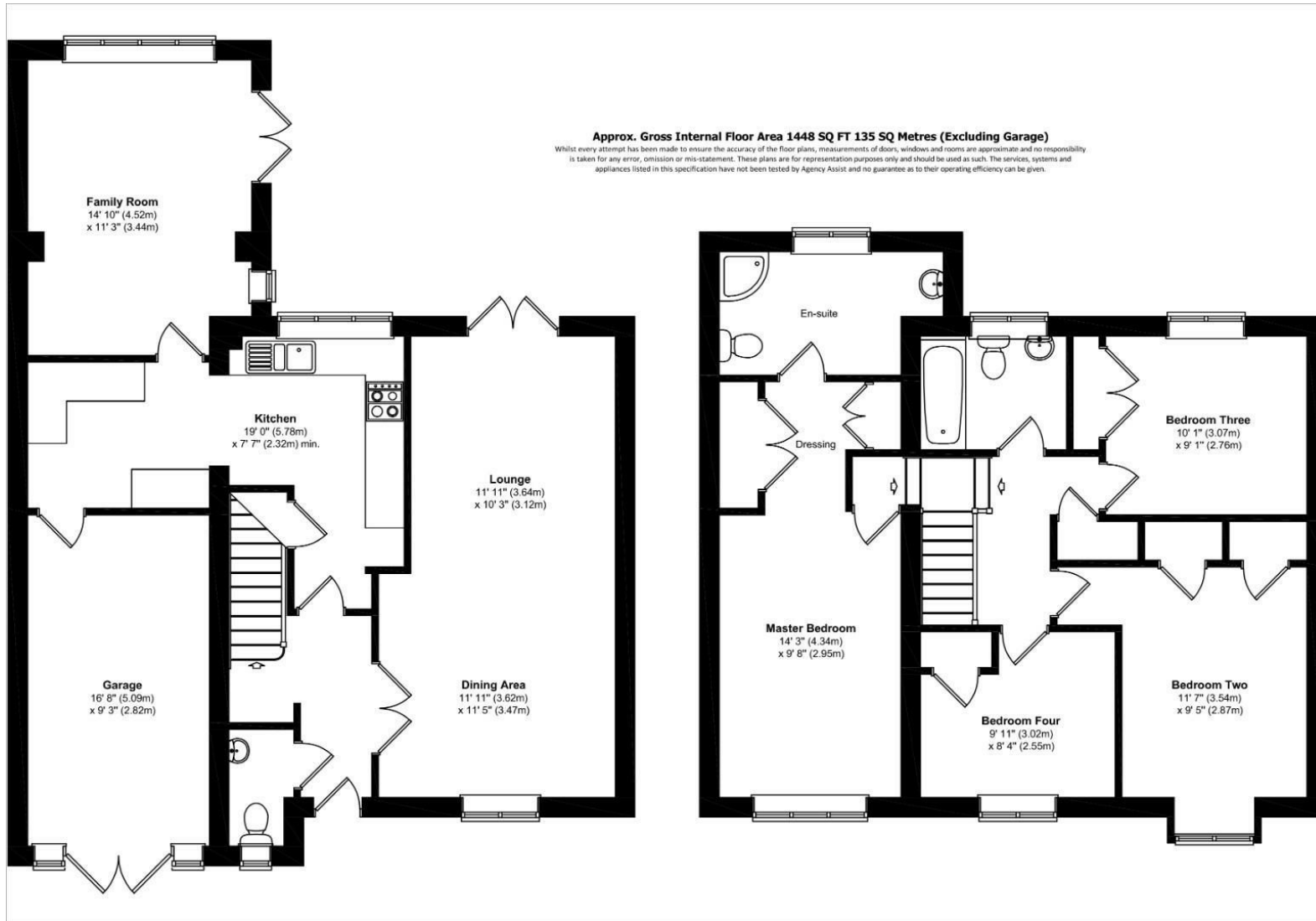
Situation



null

Council Tax Band:

Available:



While we endeavour to make our sales particulars fair, accurate and reliable, they are only a general guide to the property and, accordingly, if there is any point which is of particular importance to you please contact the office and we will be pleased to check it for you, especially if you are contemplating travelling some distance to view the property. These approximate room sizes are only intended as general guidance. You must verify the dimensions carefully before ordering carpets or any built in furniture. Please note that we have not tested the services or any of the equipment or appliances in this property, accordingly we strongly advise prospective buyers to commission their own survey or service report before finalising their offer to purchase. These particulars are issued in good faith but do not constitute representations of fact or form part of any offer or contract. The matters referred to in these particulars should be independently verified by prospective buyers or tenants. Neither Stanfords nor any of its employees or agents has the authority to make or give any representation or warranty whatever in relation to this property. Your home is at risk if you do not keep up repayments on your mortgage or other loans secured on it. Written quotation are available on request. All loans secured on property, life assurance is usually required. This can be emailed on request.

