

# [hjertets klapper]

Hjerteklappernes funktion:

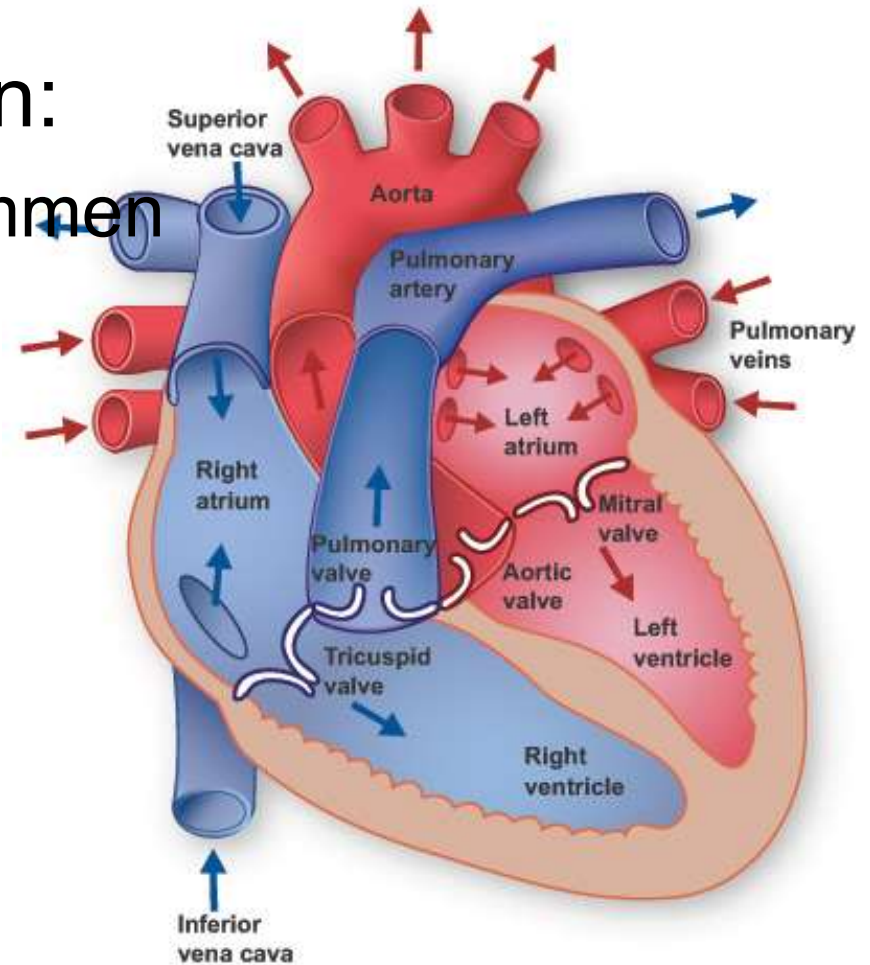
- Ensretning af blodstrømmen
- Forhindre tilbageløb

To typer af klapper:

- AV-klapper
- Semilunær klapper

Hjertelyd

- Hjerteklapper lukker



# [AV-klapper]

Inddeler hjertehalvdelene i Atrier og Ventrikler og er derfor placeret mellem disse

Opbygget af små flige (fligklap-typen) -> kuspidaalklapper

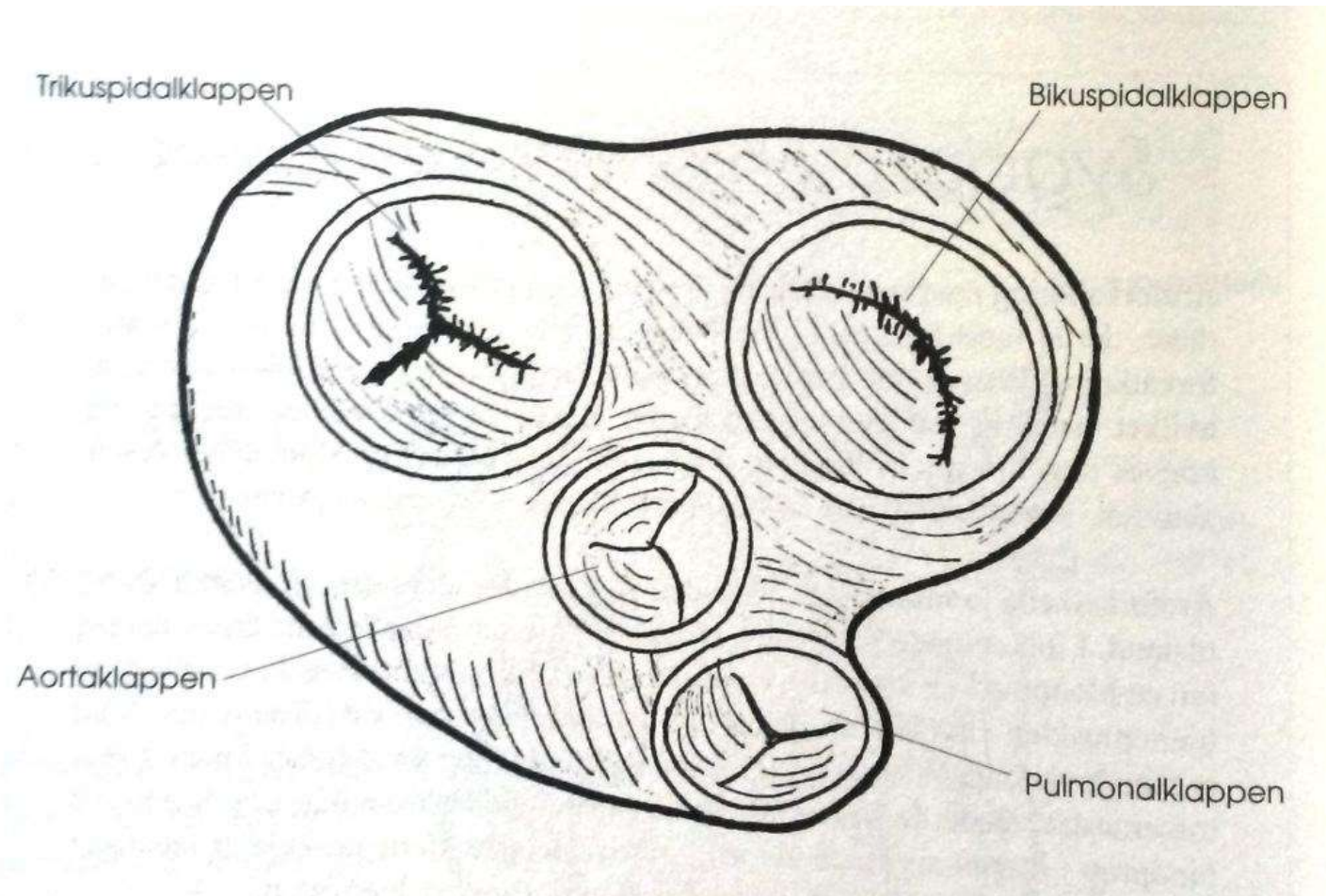
Højre atrium og ventrikel: tre flige -> *trikuspidalklappen*

Venstre atrium og ventrikel: to flige -> *bikuspidalklappen* (kaldes også *mitralklappen*)

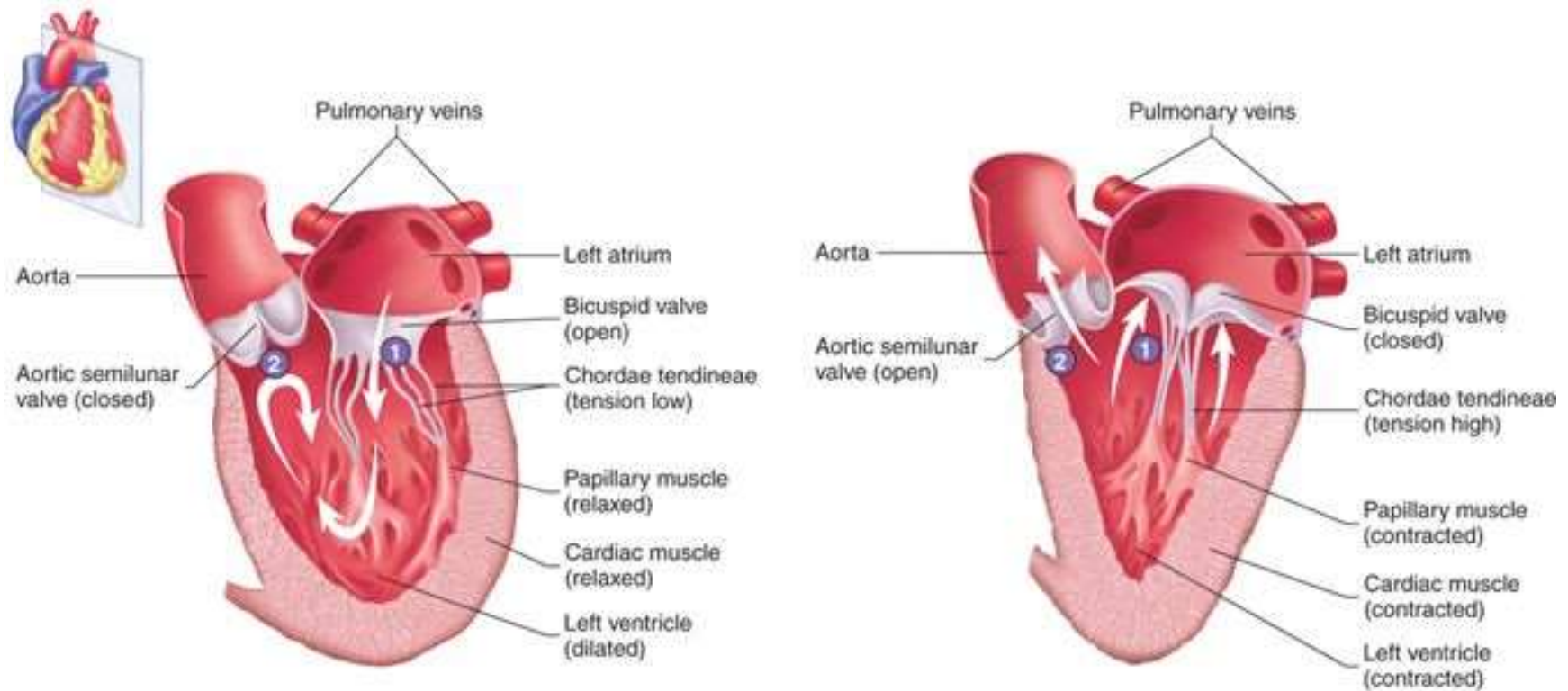
# [semilunær-klapper]

- Sidder der hvor hhv. aorta og arteria pulmonalis afgår fra venstre og højre ventrikel
- Semilunær = halvmåne
- Kaldes også aorta-klapper og pulmonal-klapper

# [hjertets klapper]



# [hjertets klapper]



(a) Valve positions when blood is flowing into the left ventricle.

- 1 The bicuspid valve is open. The cusps of the valve are pushed by the blood into the ventricle.
- 2 The aortic semilunar valve is closed. The cusps of the valve overlap as they are pushed by the blood in the aorta toward the ventricle.

(b) Valve positions when blood is flowing out of the left ventricle.

- 1 The bicuspid valve is closed. The cusps of the valves overlap as they are pushed by the blood toward the left atrium.
- 2 The aortic semilunar valve is open. The cusps of the valve are pushed by the blood toward the aorta.

# [lukning af hjerteklapper]

To tempi:

- Først kuspidaalklapperne, dernæst semilunærklapperne
- Lyden er:
  - Lup (kuspidaalklapper lukker)
  - Dup (semilunærklapper lukker)
  - Altså: lup-dup lup-dup lup-dup
- Hvert lup-dup svarer til et hjerteslag