



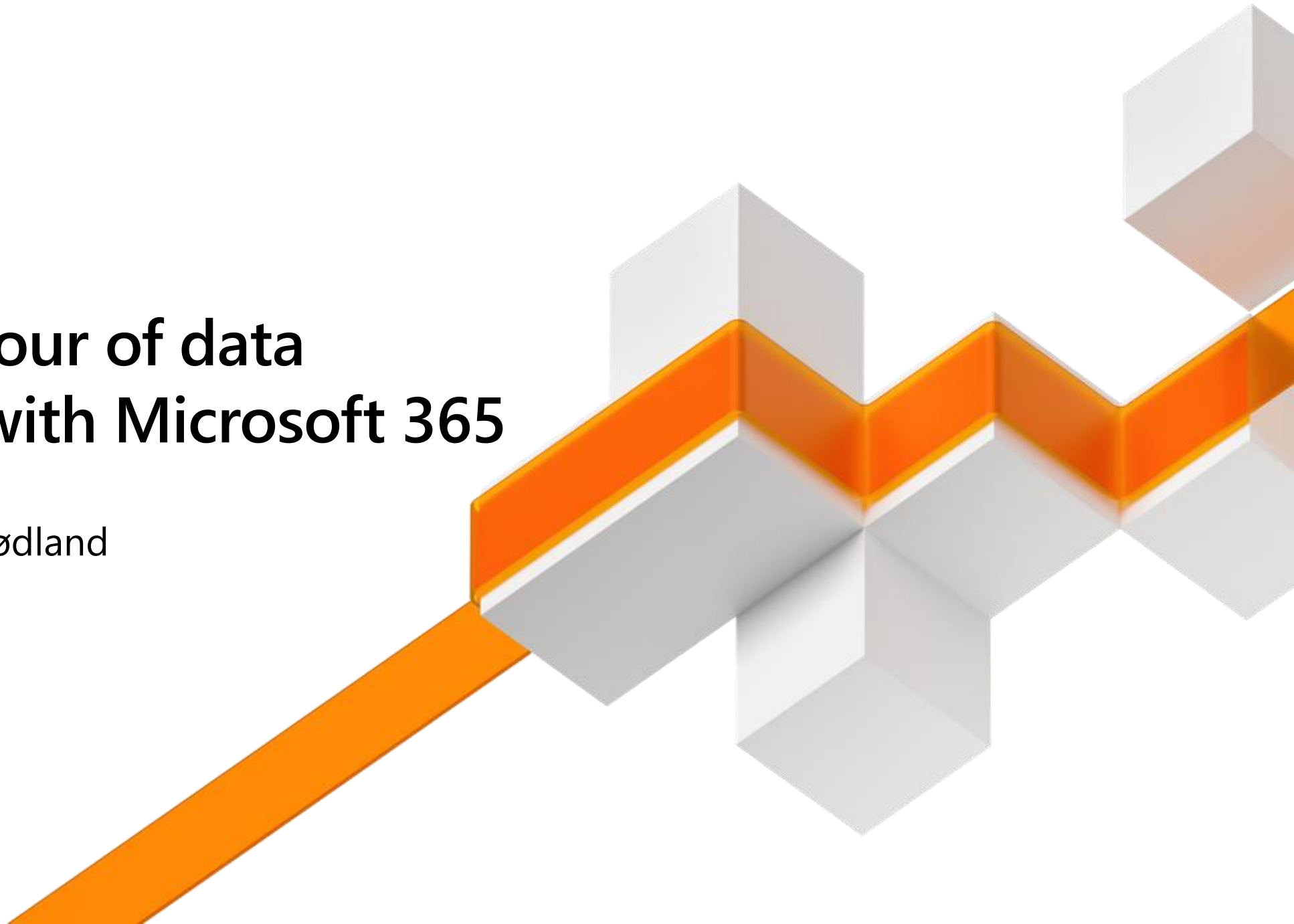
Microsoft Ignite The Tour





The grand tour of data protection with Microsoft 365

Alexander Solaat Rødland
Senior Consultant



So, do I need Information Protection?

- Hopefully not, but



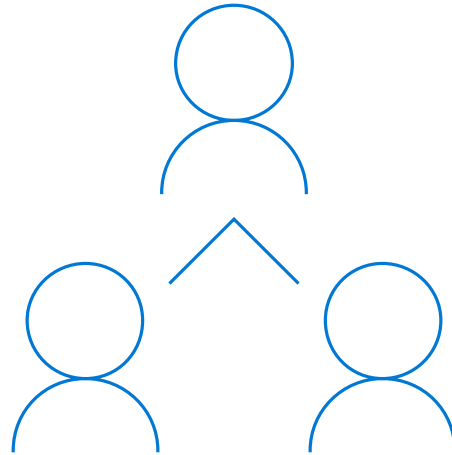
What is data protection?



Manage BitLocker

Control panel

-
- Encryption?



Sharing is not caring?



Access control?

ons. 17.01.2018 22:25

[redacted]@microsoft.com>

Azure Information Protection & Identity Driven Security

To ✓ Alexander Solaat Rødland

[redacted]

You can use the following link to download the [redacted] and [redacted] for future use. The content is available for **2 weeks** after which it will be removed from the uploaded location.

[redacted]

Note:

- Login to the above URL (preferably in InPrivate browsing mode in Internet Explorer) and sign in with the email address and password mentioned above. Once you log into the workspace, you can download the existing files from the workspace.
- Please download **ONLY** the files which have been uploaded by a Microsoft representative (with an @microsoft.com email address). Do not download files which are uploaded by any other users with a non-Microsoft email address.

Thank you! Hope you have a great day ahead.

Regards,

[redacted]

Helping partners build and grow their cloud practices faster through partner-centric resources



Enterprise-class technology



Identity & access management

Secure identities to reach zero trust



Threat protection

Help stop damaging attacks with integrated and automated security



Information protection

Locate and classify information anywhere it lives



Security management

Strengthen your security posture with insights and guidance



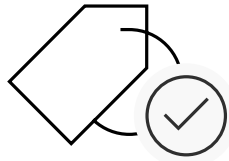
Infrastructure security

Azure Information Protection - AIP



Monitor

Track & revoke document access



Classify

Classify and label data based on sensitivity



Protect

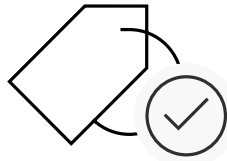
Apply protection actions, including encryption, access restrictions

Microsoft Information Protection - MIP



Discover

Scan & detect sensitive data based on policy



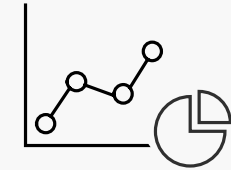
Classify

Classify and label data based on sensitivity



Protect

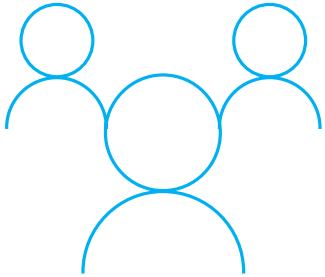
Apply protection actions, including encryption, access restrictions



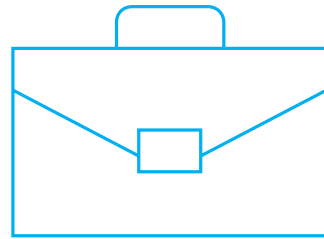
Monitor

User track & revoke + Admin monitor

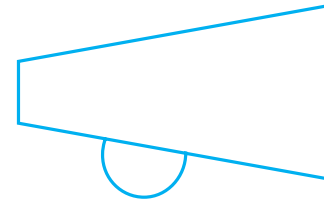
Main focus areas in adoption



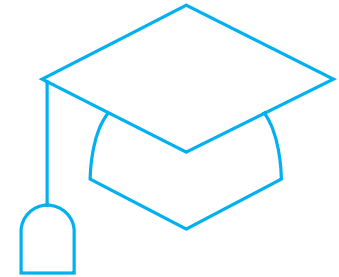
Power users /
champions



Scenarios

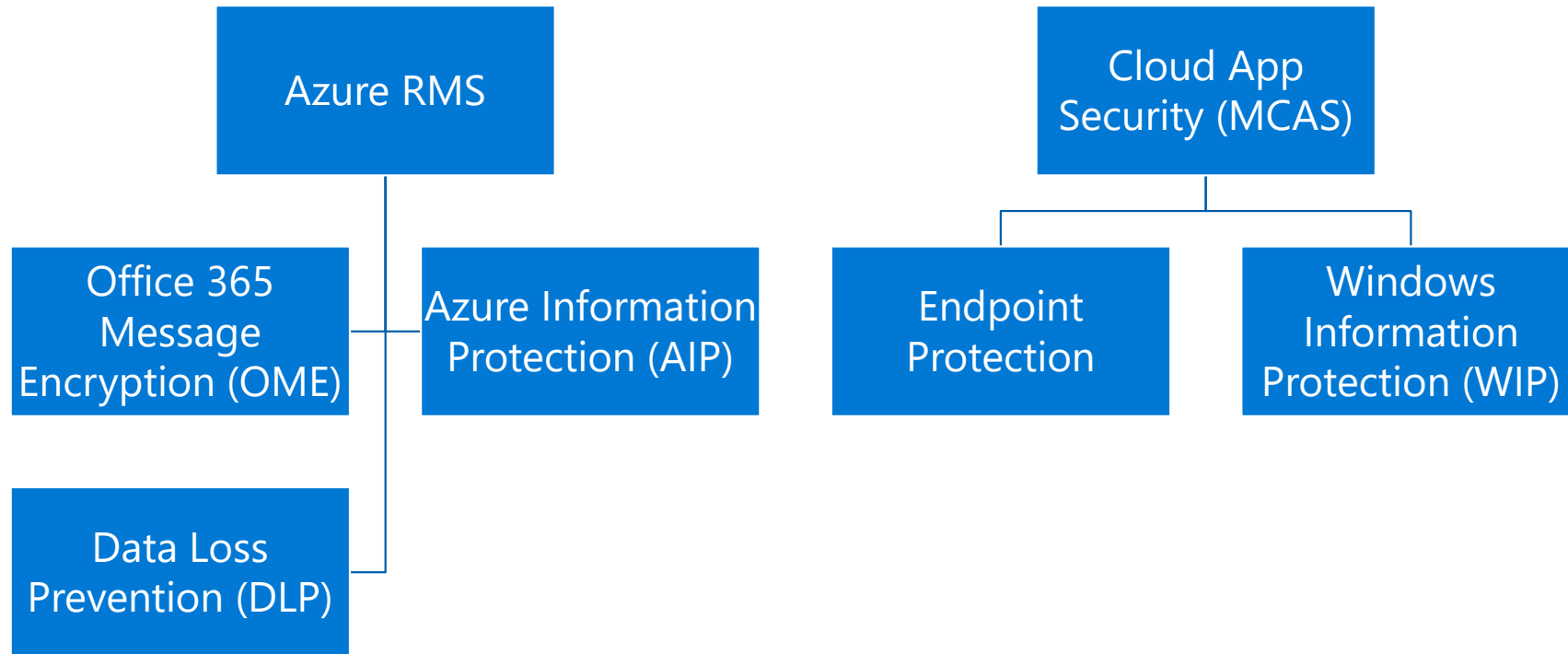


Awareness &
campaigns



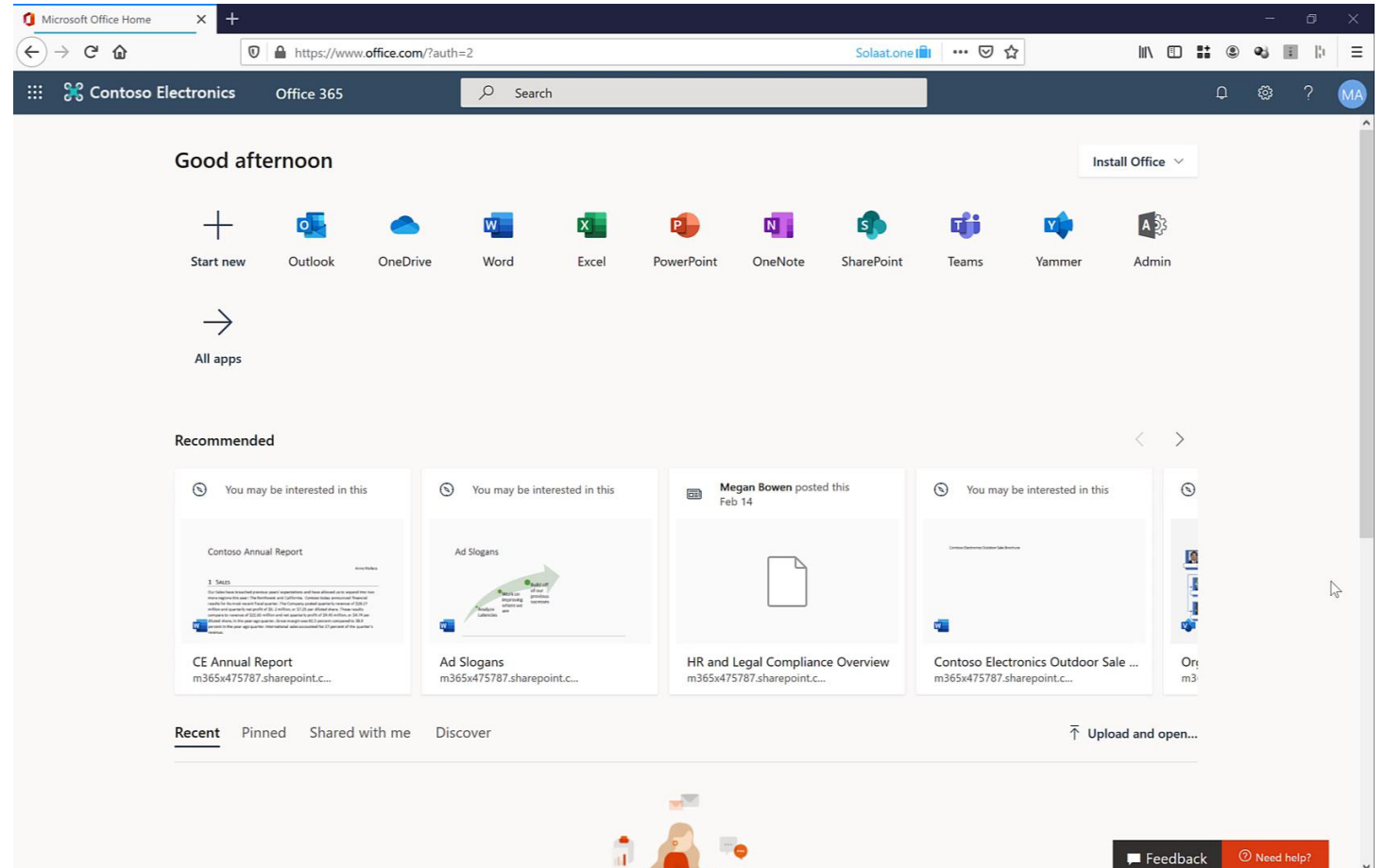
Train the end user
Ready the help desk

(A kind of) overview



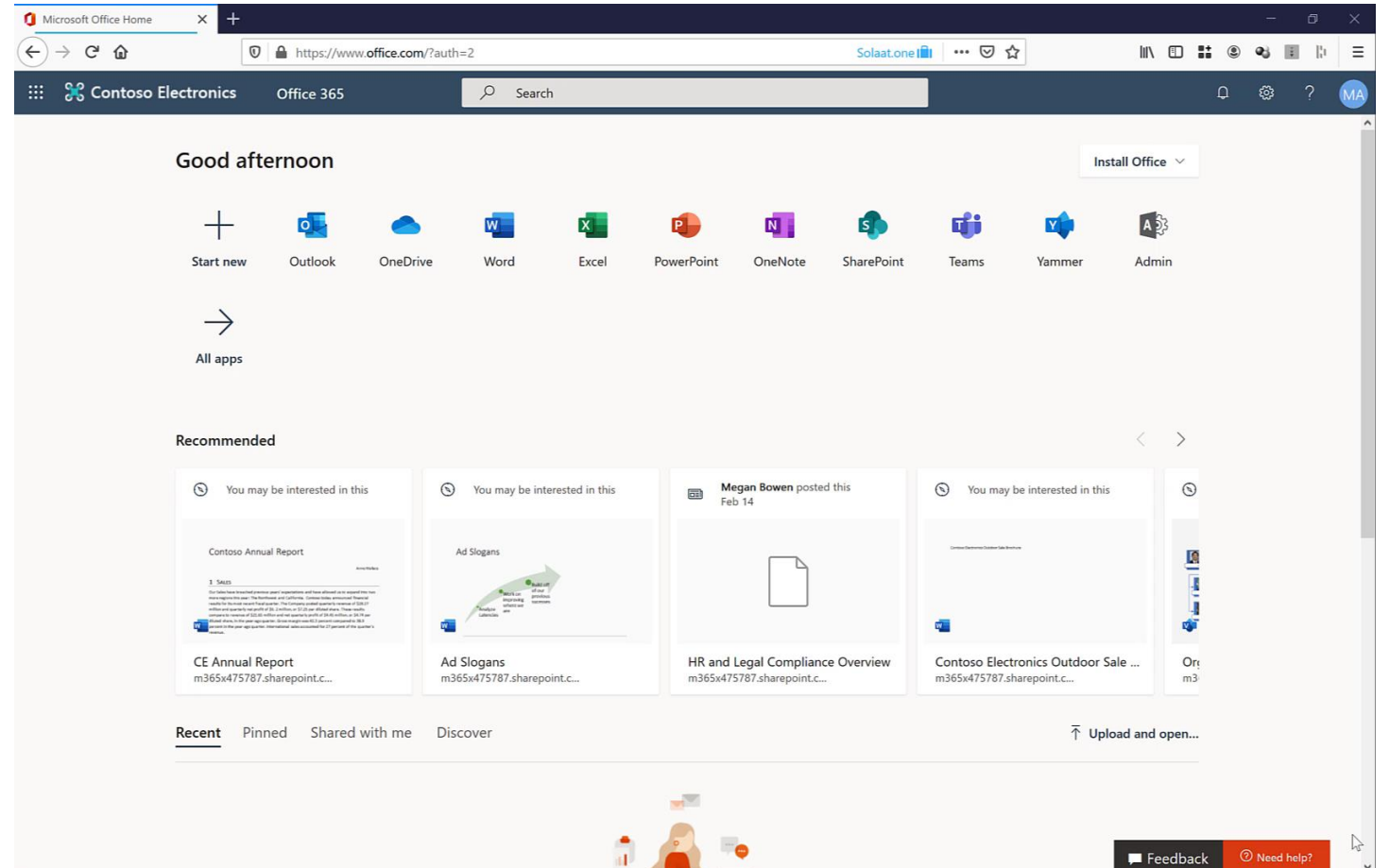
Let's try

Information Types



Let's try

AIP



So, do I need AIP?



Let's try

Session Control

The screenshot shows the Microsoft Azure portal interface in a web browser. The browser tabs include 'Microsoft Office Home', 'Microsoft 365 admin center', 'Security & Compliance', and 'Home - Microsoft Azure'. The address bar shows 'https://portal.azure.com/#home'. The user is logged in as 'admin@solaat.one'.

Welcome to Azure!
Don't have a subscription? Check out the following options.

- Start with an Azure free trial**
Get \$200 free credit toward Azure products and services, plus 12 months of popular free services.
[Start](#) [Learn more](#)
- Manage Azure Active Directory**
Manage access, set smart policies, and enhance security with Azure Active Directory.
[View](#) [Learn more](#)
- Access student benefits**
Get free software, Azure credit, or access Azure Dev Tools for Teaching after you verify your academic status.
[Explore](#) [Learn more](#)

Azure services

- [Create a resource](#)
- [Azure Information...](#)
- [Virtual machines](#)
- [App Services](#)
- [Storage accounts](#)
- [SQL databases](#)
- [Azure Database for PostgreS...](#)
- [Azure Cosmos DB](#)
- [Kubernetes services](#)
- [More services](#)

Navigate

- [Subscriptions](#)
- [Resource groups](#)
- [All resources](#)
- [Dashboard](#)

Tools

The Windows taskbar at the bottom shows the time as 17:45 on 22.02.2020, with the language set to ENG NO.

So, do I need session control?



Let's try

Data Loss Prevention



So, do I need DLP?



Challenges

- Lack of planning and informing
- Lack of follow-up
- Don't make them think
- The slippery-slope effect
 - Once it's out...

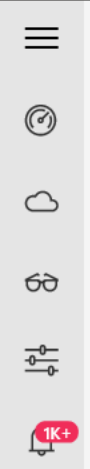


Comprehensive set of capabilities

- AZURE INFORMATION PROTECTION**
Classify, label & protect files – beyond Office 365, including on-premises & hybrid
- MICROSOFT CLOUD APP SECURITY**
Visibility into 15k+ cloud apps, data access & usage, potential abuse
- OFFICE 365 DATA LOSS PREVENTION**
Prevent data loss across Exchange Online, SharePoint Online, OneDrive for Business
- OFFICE 365 MESSAGE ENCRYPTION**
Send encrypted emails in Office 365 to anyone inside or outside of the company
- WINDOWS INFORMATION PROTECTION**
Separate personal vs. work data on Windows 10 devices, prevent work data from traveling to non-work locations
- OFFICE 365 ADVANCED DATA GOVERNANCE**
Apply retention and deletion policies to sensitive and important data in Office 365



- CONDITIONAL ACCESS**
Control access to files based on policy, such as identity, machine configuration, geo location
- OFFICE APPS**
Protect sensitive information while working in Excel, Word, PowerPoint, Outlook
- SHAREPOINT & GROUPS**
Protect files in libraries and lists
- AZURE SECURITY CENTER INFORMATION PROTECTION**
Classify & label sensitive structured data in Azure SQL, SQL Server and other Azure repositories
- SDK FOR PARTNER ECOSYSTEM & ISVs**
Enable ISVs to consume labels, apply protection
- ADOBE PDFs**
Natively view and protect PDFs on Adobe Acrobat Reader



Labels sensitive financial information with "Confidential-Finance" label

Policy severity

Medium

Category

DLP

Create a filter for the files this policy will act on

FILES MATCHING ALL OF THE FOLLOWING Edit and preview results

- App equals 21 selected
- File type equals 7 selected

+ Add filter

Apply to:

all files

Apply to:

all file owners

Inspection method

Data Classification Service

Match if Any of the following occur:

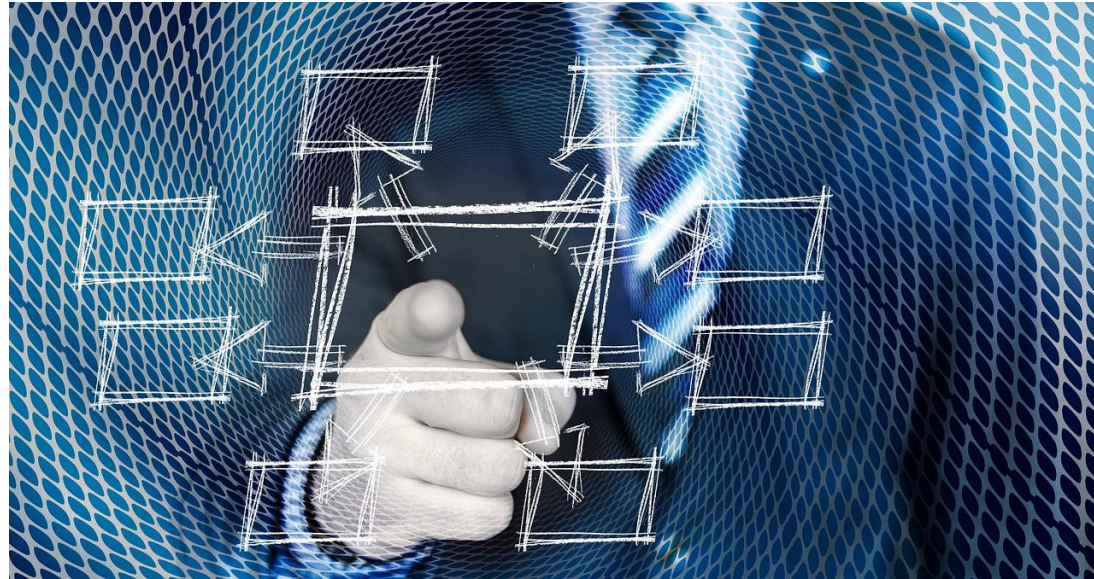
Choose inspection type...

Inspect protected files

Unmask the last 4 characters of a match

1

Know your information flow. Who talks to who, and what information do they exchange?



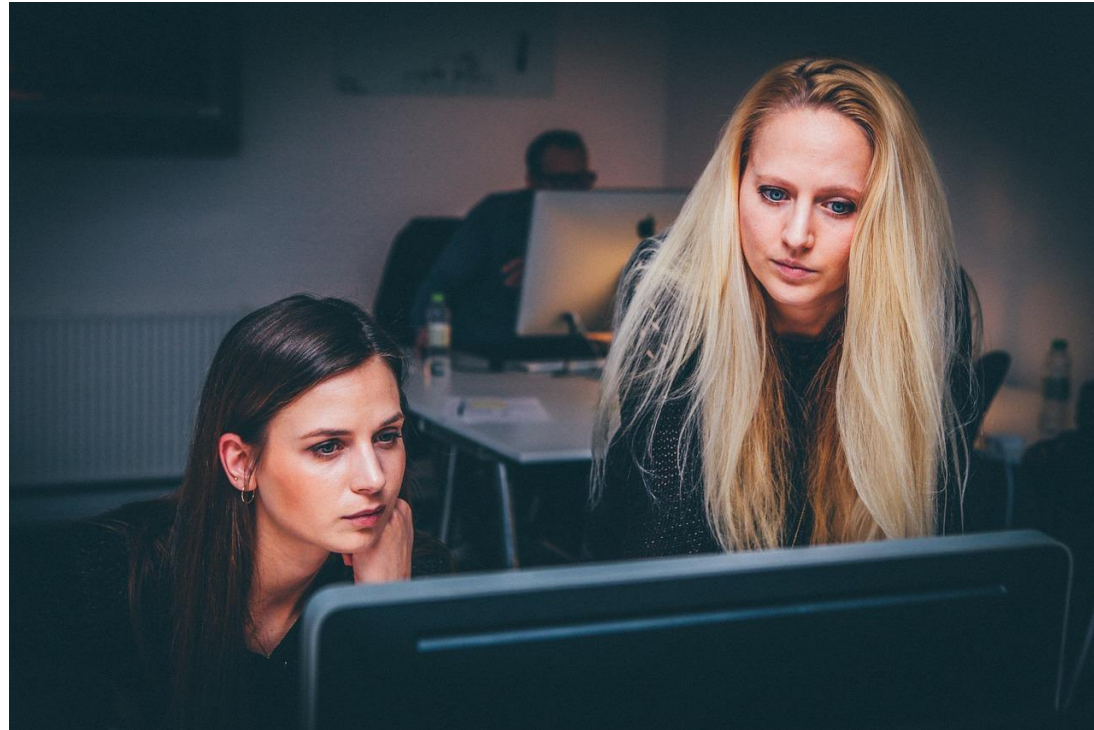
2

Avoid frustrated users. Start small and do not try to implement everything at once.



3

Have a dedicated pilot group with users from different departments.



4

Training is vital.



5

Know your customers and users.



Thank you

...And please remember the evals



Alexander Solaat Rødland

Senior Consultant
Innofactor



Twitter: @alexsolaat

Blog: <https://solaat.no>

LinkedIn: <https://www.linkedin.com/in/alexsolaat>