

Installation Manual

Introduction:

With variety of different tin roof brackets, metal roof solar mounting system can meet trapezoid/corrugated metal roof and standing seam roof demand with or without penetrating on the roof.

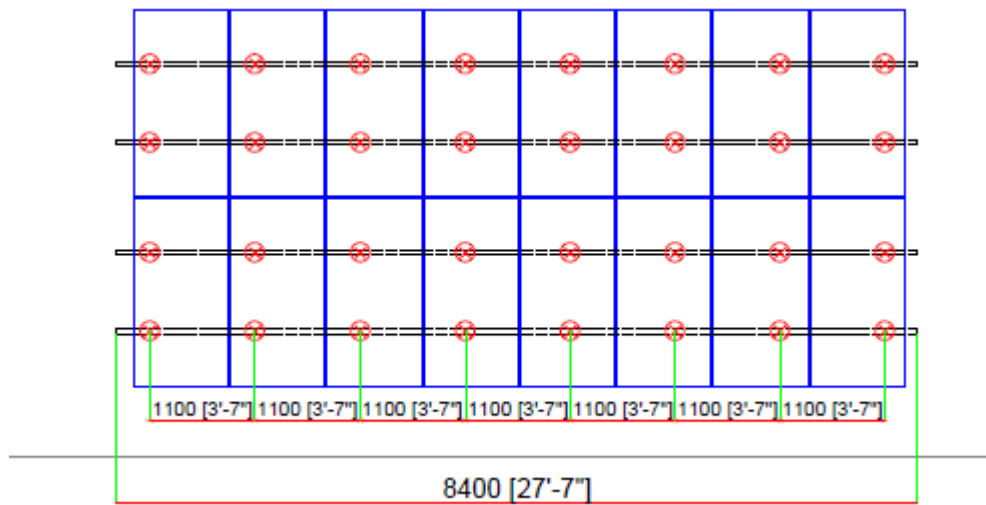


Normal metal roof mounting accessories shown as bellow:

Rail	L-feet kit	End clamp kit	Mid clamp kit
			

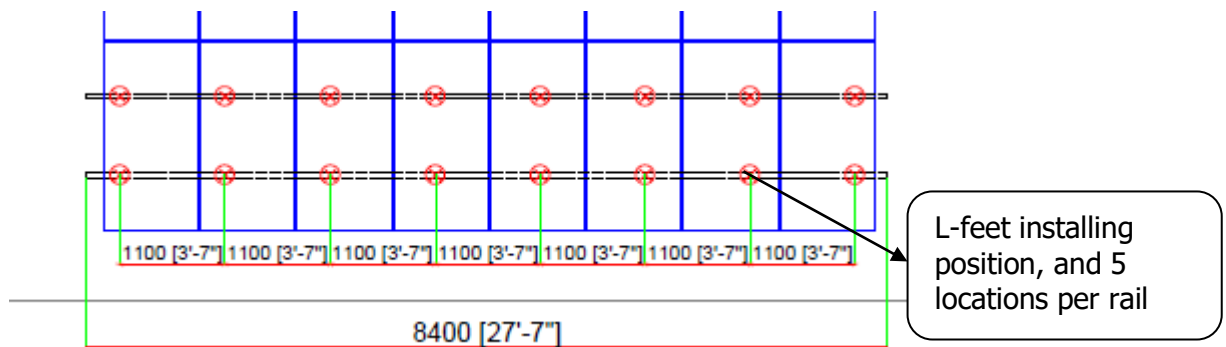
IF Roof material: concrete foundation, so we need to choose expansion bolt to instead of tapping screw.

Step1 Check drawing:



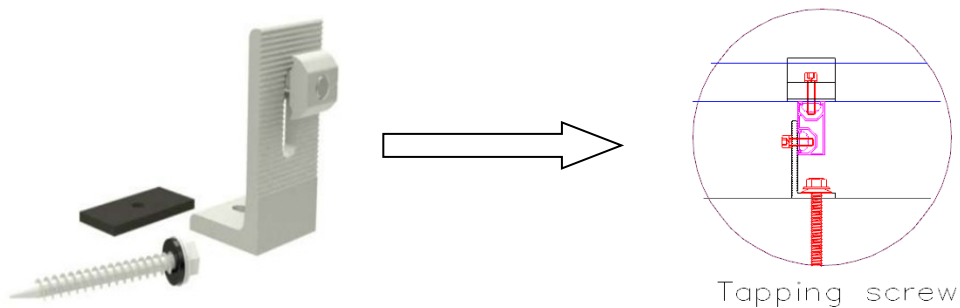
and here we show the front row which tied upon metal roof how to install as example at first:

PV Plan: 8*1 as bellow

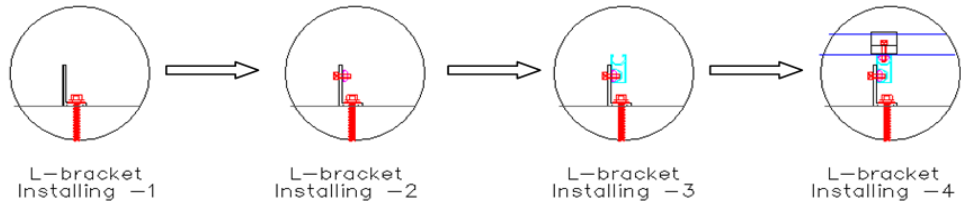


Mounting rail length: 8400mm=2100mm*4 to connect

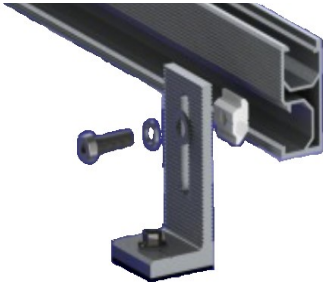
Step2:Installing L-feet by expansion bolt up on metal roof.



Here we can see as bellow:



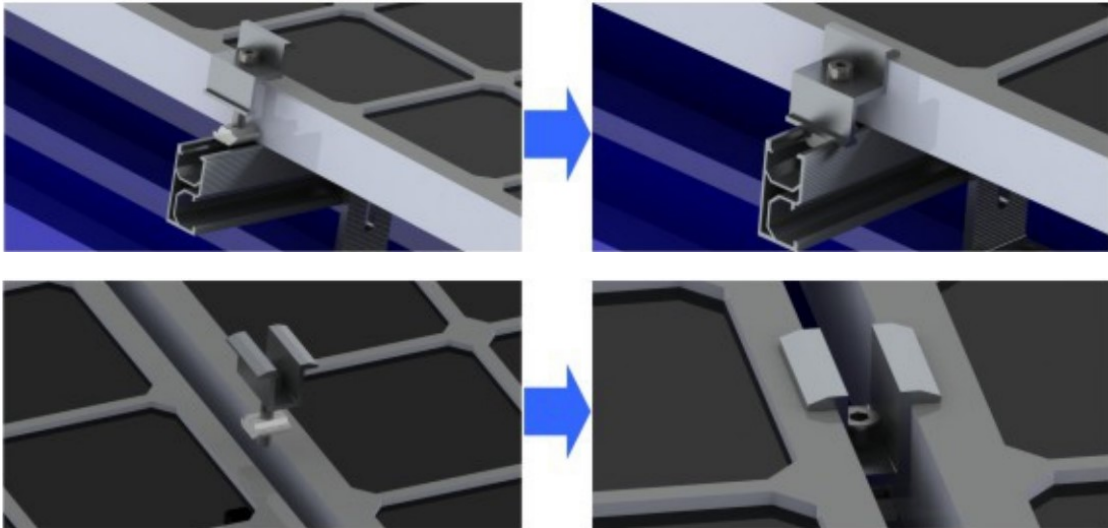
Step3: Installing Mounting rail by the side of L-foot kit as bellow:



Use rail splice kit to connect each 2 mounting rails:



Step4: Installing PV panel by End clamp and mid clamp.



Make sure all parts fixed steady. End.