

# Anholt Race 2021 Racecourse

## LIMITATIONS

Violation of the limitations can award time penalty or disqualification in particularly serious offenses.  
All limitations are to be considered hindrances or marks on the racecourse.  
Observed violations will not be marked by signal.

## CHANGES IN 'Limitations'

Limitations added to the racecourse since publication of the sailing instructions will be announced on the electronic noticeboard on [www.sjaellandrundt.dk](http://www.sjaellandrundt.dk).  
Changes of a significant matter will be informed at registration.

## TRAFFIC SEPARTION SCHEMES (rule 56.2)

A vessel must adhere rule 10, Traffic Separation Schemes (TSS) in the International Maritime Organization (IMO)  
All sailing in the TSS in northern Oresund is prohibited.

## THE NORTHERN SOUND (please refer to "The sound, north part" Fig. 3)

Traffic Separation waypoints W1 – W4 are NOT to be crossed

Violation can by mere observation award Time Penalty or disqualification in severe cases.  
If observed by the national coastguard, there may be implemented a punal fine of DKK 6000,-

## START AREA

The Start line will be placed north of Helsingør Nordhavn between Helsingør Nordhavn and Hellebæk.



Figur 1

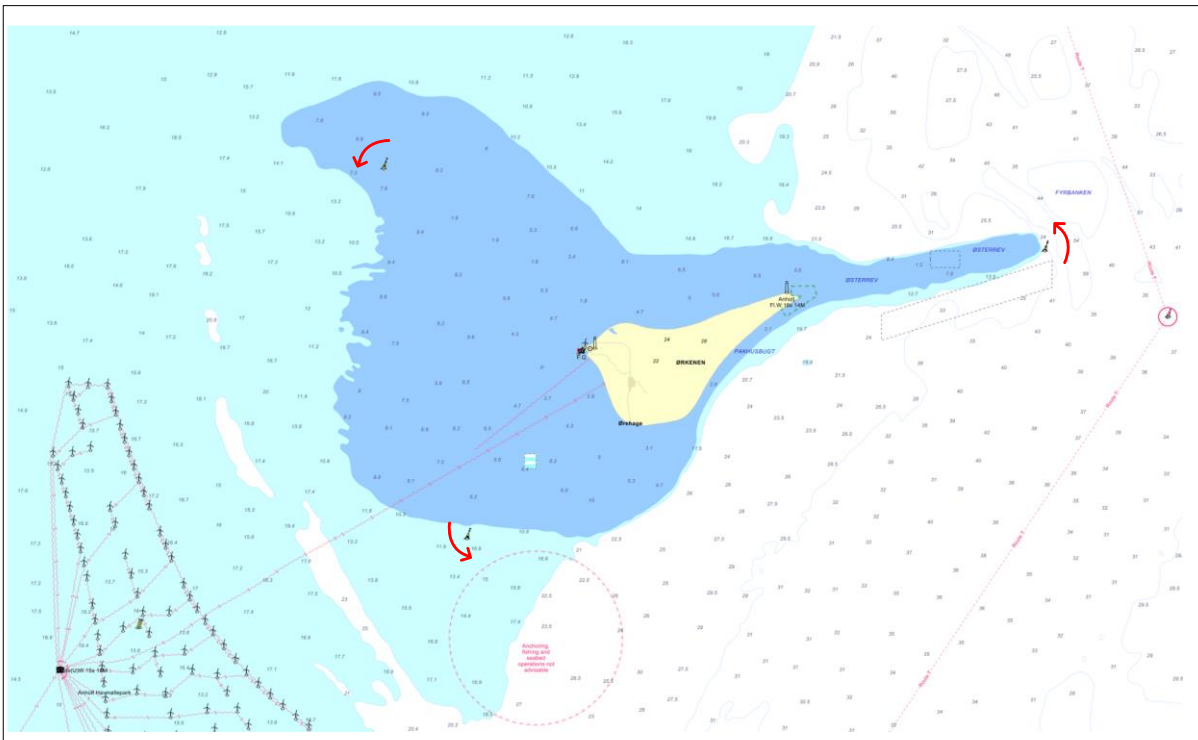
# ANHOLT

Anholt is passed on portside.

Øster Rev: Eastbuoy (Q(3)W.10s) is kept to port.

Westbuoy (YBY) to the NW of Anholt is kept to port.

Southbuoy(Q(6)LFI.15s) to the SW of Anholt is kept to port.

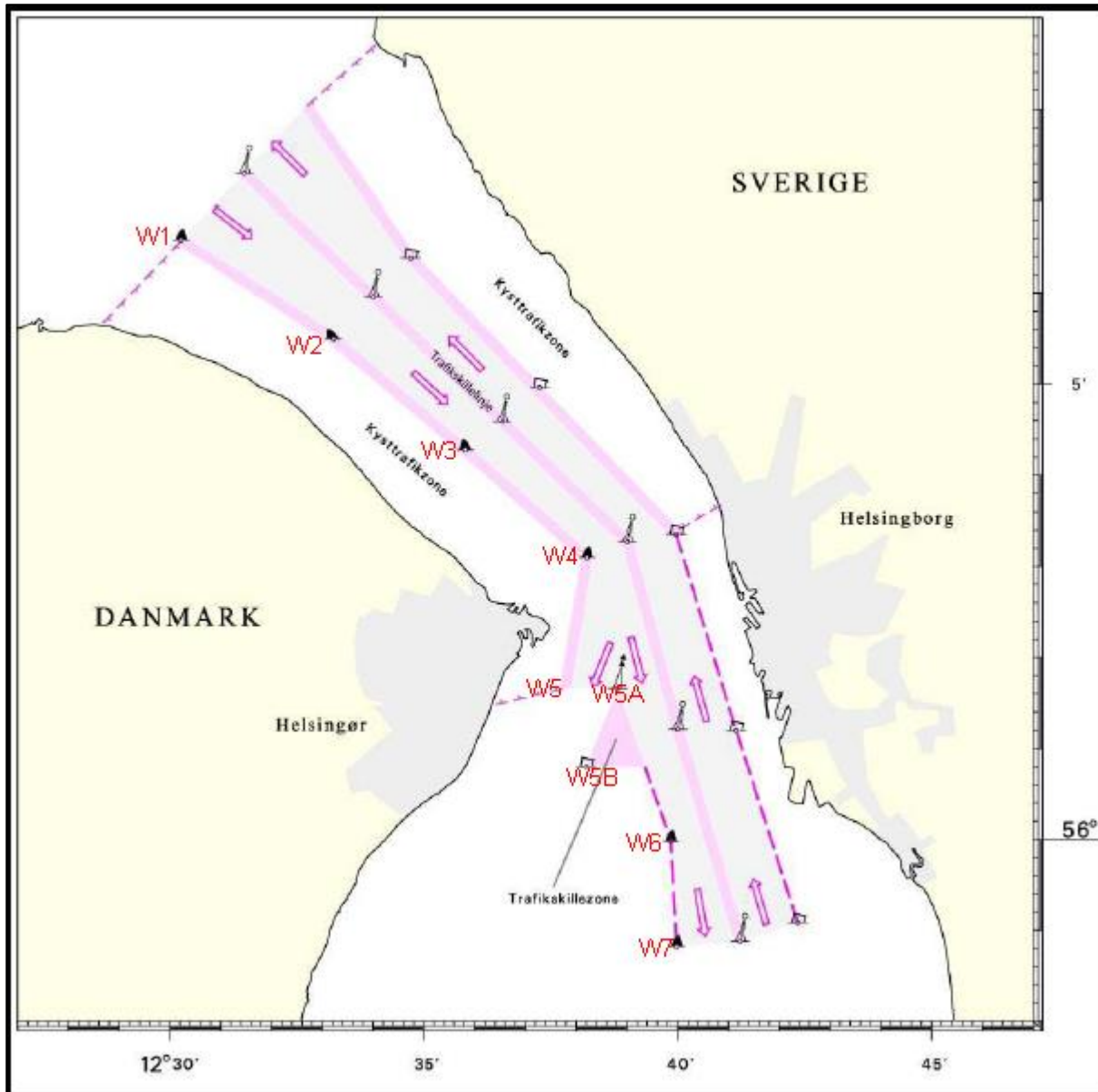


Figur 2

## THE SOUND, north part

The course must be kept to the west of W1, W2, W3, W4

All sailing in the Traffic Separation Scheme, near the ends of the TSS and in the Traffic Separation Zone is prohibited.



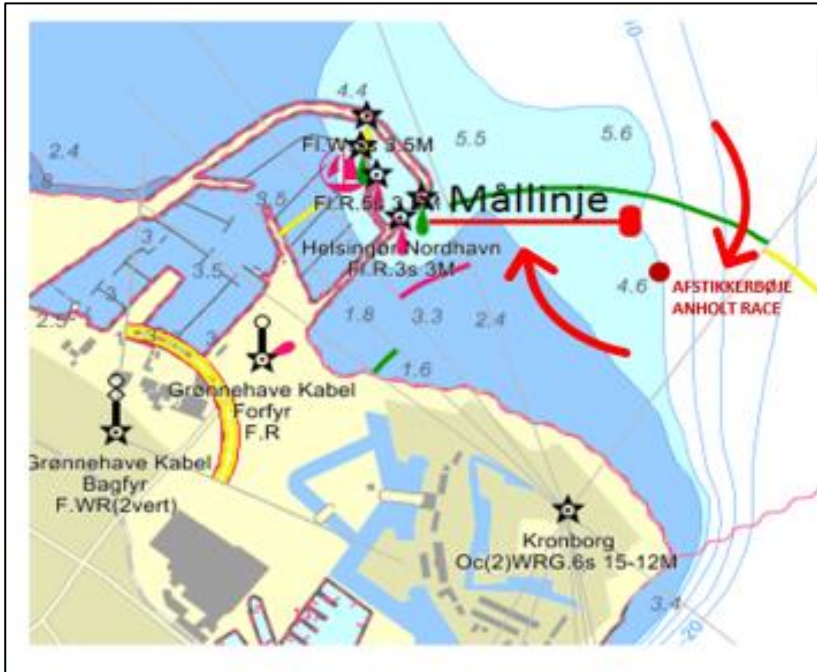
Figur 3

## FINISH LINE

(Please remember to note the GPS time for crossing the finish line in the logbook)

The finish line is placed between the Referee Tower and the orange Buoy outside of Helsingør Nordhavn. At night, the buoy will be marked with white flash, or with direct lighting.

Vessels participating in Anholt Race will be using the same finish line as Round Seeland Race, Therefore, the separate deviation buoy must be passed south, with the buoy to starboard before the finish line is crossed.



Figur 4