



Biederlack®

Feeling home.

A green metal chair is the central focus, with a large, colorful patterned blanket draped over its back and seat. The blanket features abstract shapes in shades of pink, beige, and white. The chair is situated on a light-colored stone patio. In the background, there is a lush garden with various green plants, including ferns and small trees in wicker baskets. The scene is bathed in soft, natural light, suggesting a peaceful outdoor setting.

Trend Collection #01  
2024



---

# ÜBERSICHT

OVERVIEW  
APERÇU GÉNÉRAL

**04**

Pink Scent

**06**

Mediterranean Retro

**08**

Difference

**10**

Picnic & Summer

# Pink Scent

**58% Baumwolle / 35% Polyacryl / 7% Polyester**

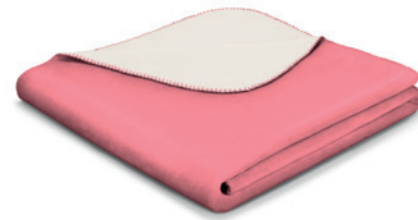
58% cotton / 35% acrylic / 7% polyester // 58% coton / 35% acrylique / 7% polyester

150 x 200 cm  
**Wohndecke mit geketteltem Zierstich**  
 Balnkat with blanket stitch  
 Plaid avec point de cheval  
 (ca. 415 g/m<sup>2</sup>)



**MINT-ECRU**

771827



**PINK-ECRU**

807687



MADE IN GREEN  
 M21L8RUS8  
 Hohenstein HTTI



This product contains 50% GRS certified recycled cotton certified by CU 1000664



**FLORAL SECRET**

807656



**NARROW**

807663



**SOFT LEVES**

807670



**75% Baumwolle / 25% Polyacryl**

75% cotton / 25% acrylic // 75% coton / 25% acrylique

130 x 170 cm  
**Plaid mit kurzen Fransen**  
 Plaid with short fringes  
 Plaid à franges courtes  
 (ca. 225g/m<sup>2</sup>)



**STRIPE OUT**

# Mediterranean Retro

**58% Baumwolle / 35% Polyacryl / 7% Polyester**

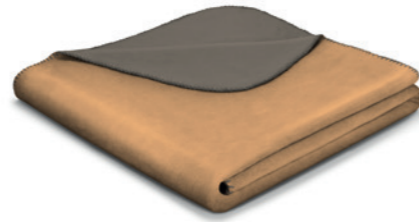
58% cotton / 35% acrylic / 7% polyester // 58% coton / 35% acrylique / 7% polyester

150 x 200 cm  
**Wohndecke mit geketteltem Zierstich**  
 Balnkat with blanket stitch  
 Plaid avec point de cheval  
 (ca. 415 g/m<sup>2</sup>)



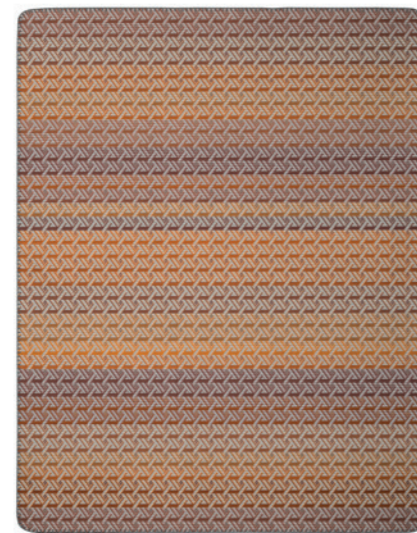
**PALISADE-FEDER**

771797



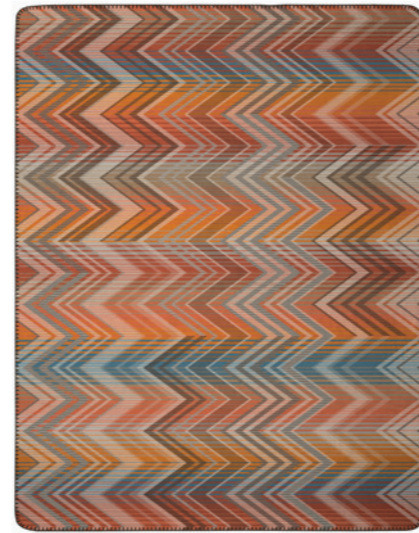
**HONEY-TAUPE**

801791



**BRAIDED**

807632



**SOUK**

807649



MADE IN GREEN  
 M21L8RUS8  
 Hohenstein HTTI



This product contains 50% GRS certified recycled cotton certified by CU 1000664

**75% Baumwolle / 25% Polyacryl**

75% cotton / 25% acrylic // 75% coton / 25% acrylique

130 x 170 cm  
**Plaid mit kurzen Fransen**  
 Plaid with short fringes  
 Plaid à franges courtes  
 (ca. 225g/m<sup>2</sup>)



**RIAD**



**COLOURIST**



# Difference

**58% Baumwolle / 35% Polyacryl / 7% Polyester**

58% cotton / 35% acrylic / 7% polyester // 58% coton / 35% acrylique / 7% polyester

150 x 200 cm  
**Wohndecke mit geketteltem Zierstich**  
 Balnkat with blanket stitch  
 Plaid avec point de cheval  
 (ca. 415 g/m<sup>2</sup>)



**ANTIQUE-ECRU**

771919



**BLUE HEAVEN-ECRU**

771896



MADE IN GREEN  
 M21L8RUS8  
 Hohenstein HTTI



This product contains 50% GRS certified recycled cotton certified by CU 1000664



**EXACT BLUE**

807625



**BLOOMING DAY**

807618



**STAIRWAY**

807601



**75% Baumwolle / 25% Polyacryl**

75% cotton / 25% acrylic // 75% coton / 25% acrylique

130 x 170 cm  
**Plaid mit kurzen Fransen**  
 Plaid with short fringes  
 Plaid à franges courtes  
 (ca. 225g/m<sup>2</sup>)



**STRIPE OUT BLUE**



## Picnic

**Oberseite: 100% Polyester / Unterseite: 100% Polyethylen-Vinylacetat**

Face: 100% polyester / Reverse side: 100% polyethylene vinyl acetate

Face supérieure : 100% polyester / Face inférieure: 100% polyéthylène acétate de vinyle

130 x 170 cm

**Picknickdecke mit gewebtem Polyester-Band**

**Decke zusammenfaltbar, mit Tragegurt, Schmutz abweisende Unterseite**

Picnic blanket with woven polyester-binding

Foldable blanket, with carrying strap, dirt-repellent reverse side

couverture de pique-nique avec ruban polyester tissé

Couverture pliable, avec bandoulière, avec un côté résistant aux salissures

(ca. 240 g/m<sup>2</sup>)



**PICNIC JEANS**

756282



**PICNIC GREEN**

793195



**PICNIC CORAL**

741226



**PICNIC VIOLET**

793201



# Summer

100% Baumwolle // 100% cotton // 100% coton

150 x 200 cm  
**Wohndecke mit Overlock-Stich**  
 Blanket with overlock stitch  
 Plaid avec point de surjet  
 (ca. 375 g/m<sup>2</sup>)



This product contains 57% GRS certified recycled cotton certified by CU 1000664

100%  
 Baumwolle  
 cotton  
 coton



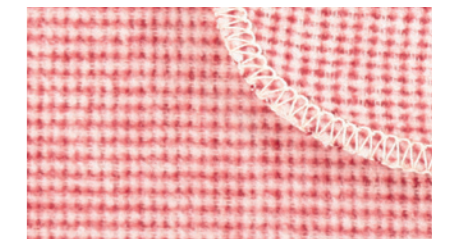
PEARL GREY

778321



PEARL ROSE

778314



PEARL RED

796370



PEARL MINT

778352



PEARL BLUE

796387



PEARL YELLOW

778338



PEARL OATMEAL

783288



MIT LIEBE GEFERTIGT IM HERZEN DES MÜNSTERLANDS.





Biederlack®

Feeling home.

**HERMANN BIEDERLACK GmbH + Co. KG**

Biederlackstr. 21 · 48268 Greven

Postfach 11 63 · 48250 Greven

Telefon +49 2571 808-0

Telefax +49 2571 808-404

[info@biederlack.de](mailto:info@biederlack.de)

[www.biederlack.de](http://www.biederlack.de)