



Dangerous shipwrecks of the Gdańsk Bay

Warszawa 2019.02.27

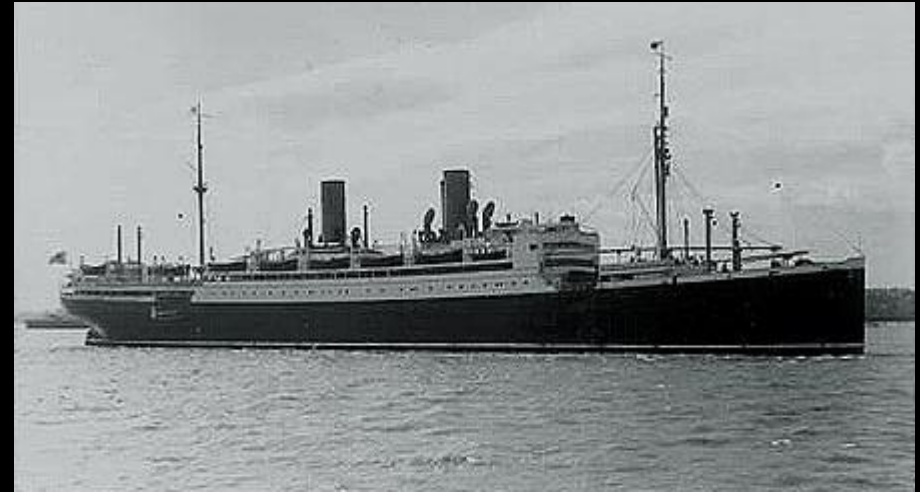
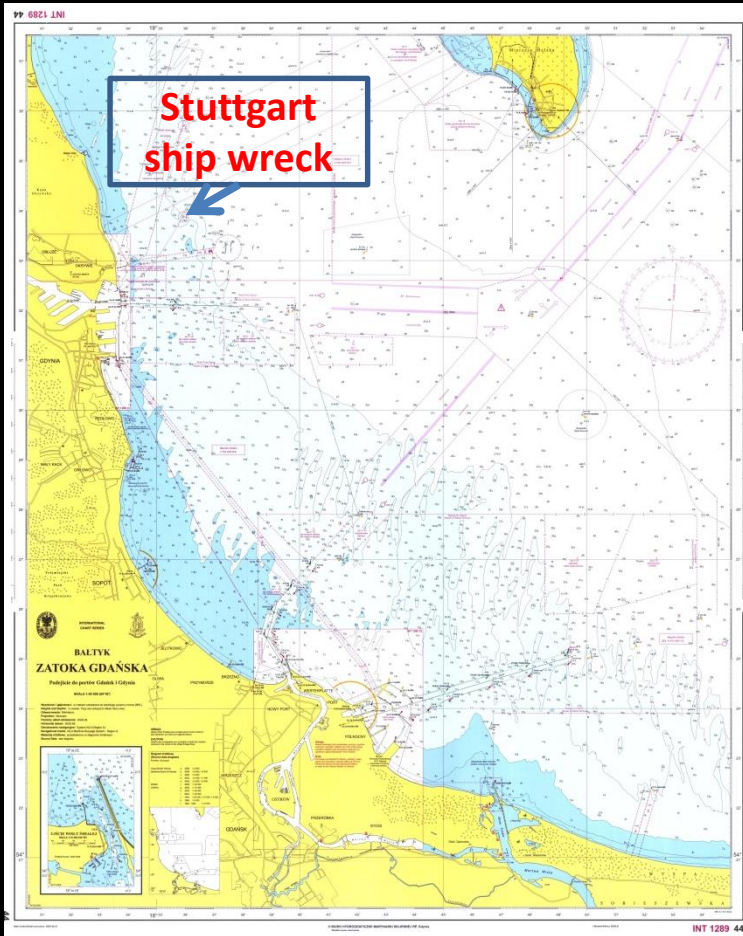
By Polish Maritime Institute Gdansk

Presenter D.W.Sauer Gdynia / Berlin



Debris of Stuttgart Hospital Ship in Gulf of Gdansk – Impact of Motor Vessel Wrecks on the State of the Marine Environment

s/s Stuttgart



Main parameters of the ship:

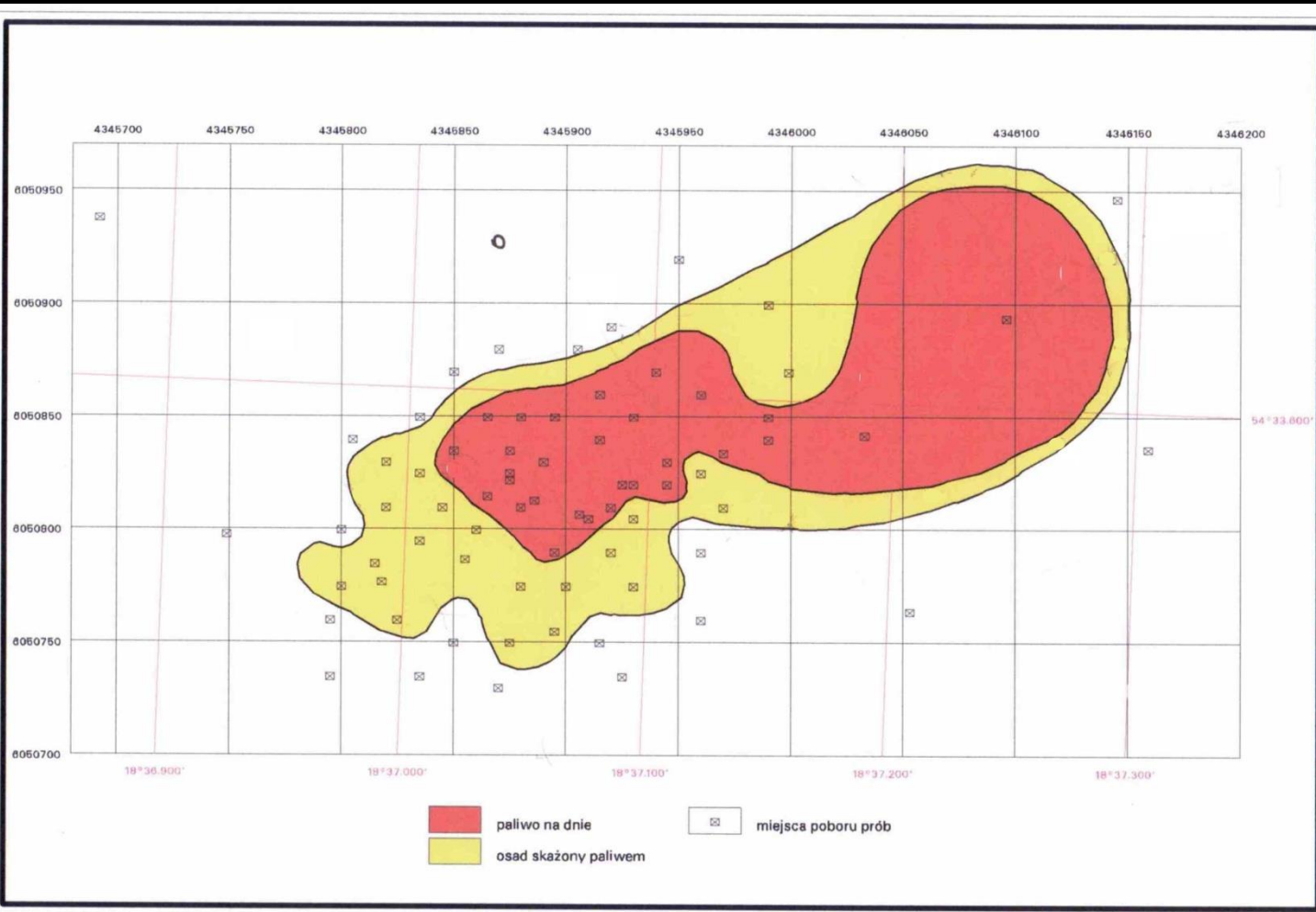
- length - 171.6 m
- breadth - 19.8 m
- gross tonnage - 13387 GRT
- net tonnage - 7796 NRT

s/s Stuttgart



An aerial photograph presenting a fragment of the Kriegsmarine base in the Gdynia harbour right after the American air raid. The photograph was taken by an allied airplane. The fiercely burning „Stuttgart” steam ship (hospital) is shown in the bottom right corner.

Range of occurrence of contamination with the heavy fuel flowing out of the s/s „Stuttgart” wreck – state for 1999



Contaminated Area

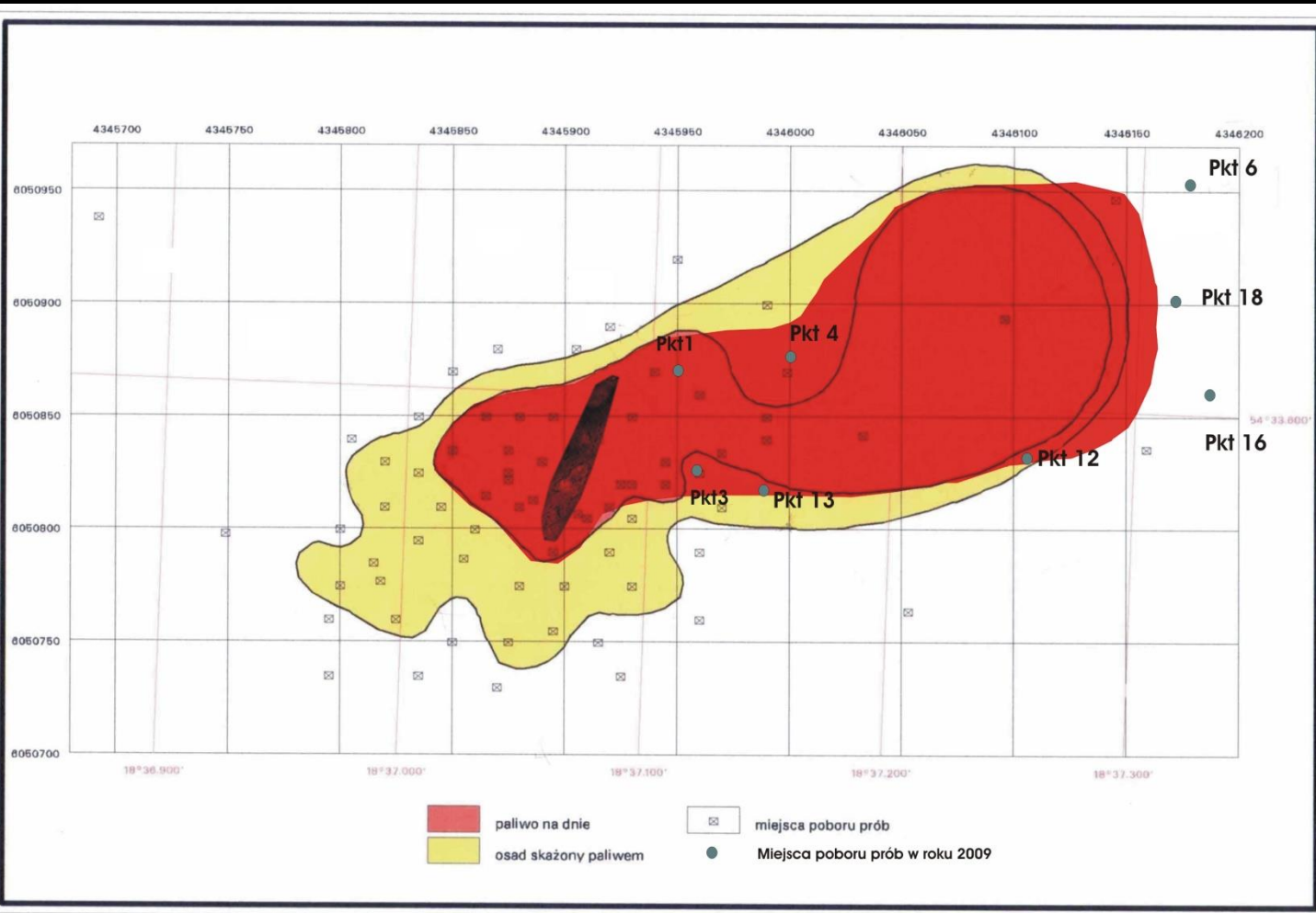
25 000 sq.m.

Estimated volume of contaminated ground

40 000 c.m.

(c.a. 70 000 ton)

Range of occurrence of contamination with the heavy fuel flowing out of the s/s „Stuttgart” wreck – state for 2009



Contaminated Area

32 000 sq.m.

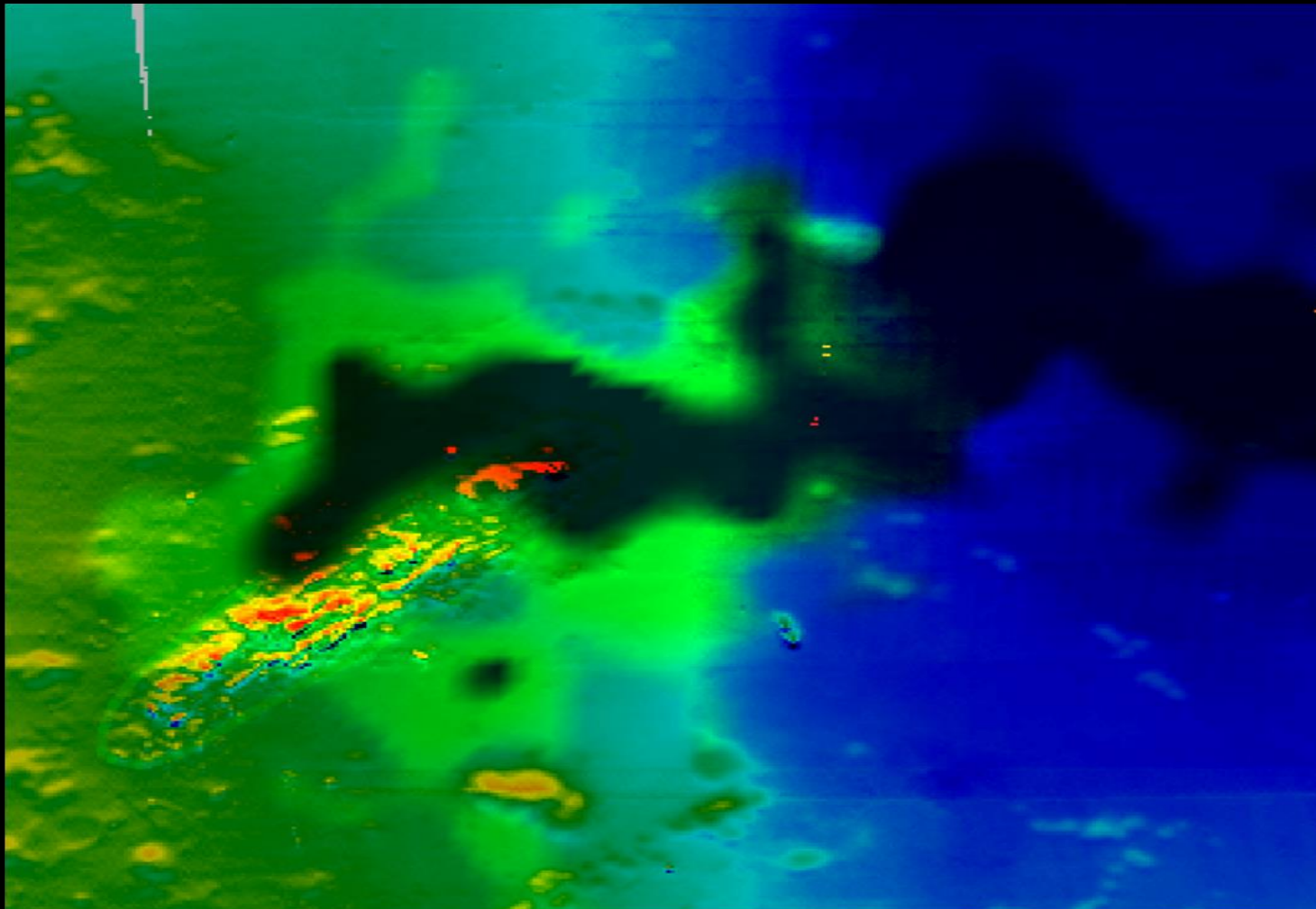
Estimated volume of contaminated ground

48 000 c.m.

(c.a.80 000 ton)



Range of occurrence of contamination with the heavy fuel flowing out of the s/s „Stuttgart” wreck – state for 2012



Contaminated Area

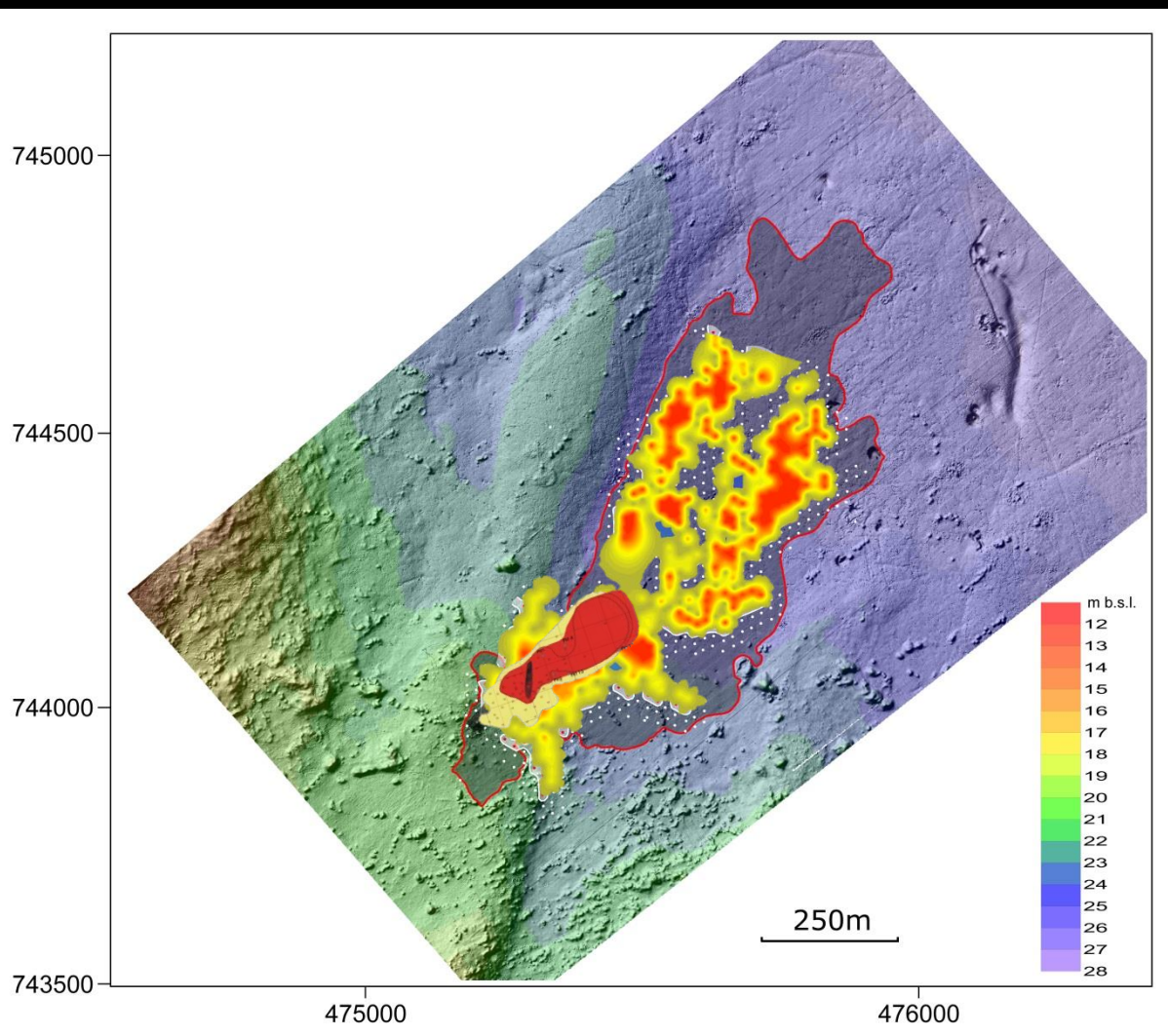
120 000 sq.m.

Estimated volume of contaminated ground

90 000 c.m.

(c.a.150 000 ton)

Range of occurrence of contamination with the heavy fuel flowing out of the s/s „Stuttgart” wreck – state for 1999/2009/2012/2014 and 2015



Contaminated Area:

1999 Year

- **25 000 sq.m. – 2,5 ha.**

2009 Year

- **32 000 sq.m – 3,2 ha.**

2012 Year

- **90 000 sq.m – 9,0 ha.**

2014 Year

- **270 000 sq.m – 27 ha.**

2015 Year

- **350 000 sq.m – 35 ha.**

2016 Year

- **415 000 sq.m – 41,5 ha**