

PRYP

DAMAC Hills - The Flora

Finishing by Trump

TFL/DT59/H084F





Find the perfect blend of luxury and leisure at Trump villas and DAMAC Hills.

- **Sustainable Oasis:** 42M sqft community with diverse residences and social charm
- **Night Golf Icon:** Home to Trump International Golf Club, a global landmark offering night play
- **Investor's Delight:** Capital values double in 3 years, with off-plan villas soaring by 130%
- **Trump Villas:** Stunning standalone villas with unbeatable views of the 18-hole championship golf club
- **Fully furnished villa :** All furniture, accessories and bedding from brand Fendi
- **Gold Standard Living:** Trump's signature signifies superior quality and perfection, defining prestigious developments worldwide
- **Exclusive Trump Estate:** Limited edition villas, the epitome of sought-after living in DAMAC Hills



Property Details:

Product Name DAMAC HILLS – The Flora

Property Name The Flora - Trump Finishes

Property Status Ready

Anticipated Completion Date Ready

Gross Price AED 15,500,000

VAT The Flora - Trump Finishes

Net Price AED 15,500,000

Permitted Use Residential

Unit Details:

Unit TFL/DT59/H084F

Unit Type Residential

Area 5,220.28 SFT

View Type Golf Course Front

Bedrooms 5

Bedroom/ Villa Type 5 BR

Net Price AED 15,500,000

Plot Area (Sq.ft.) 7282.65

Additional Charges:

Land Registration Fee (A)* TFL/DT59/H084F

OQOOD Fee(C) AED

Other Fee(E) N/A

Total Fees to DLD (A+B+C+D+E) Golf Course Front

Title Deed (B)

DSR Fees(D) AED

Plot Area (Sq.ft.) AED

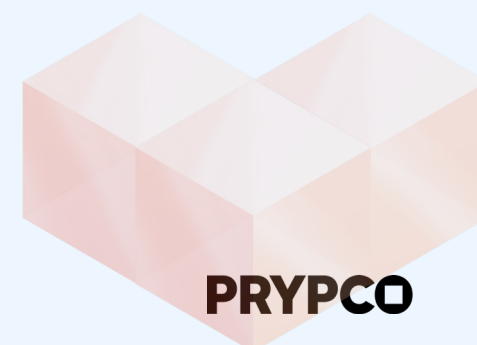
Payment Plan:

Description	Percent	Milestone Event	Amount
DEPOSIT	100	Immediate	AED 15,500,000

Disclaimer:

These charges are approximate values. It may be subject to change by the authorities. *Land Registration Fee is %4 of the Price

** VAT will be charged at %5 of the price in case of Service Apartments.



Living and Dining



Kitchen

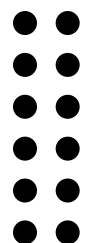


Master Bedroom



Bathroom





Material Highlights

Living & Dining

Tempered Clear Crystal Glass Railing



Marble Travertine Classic Polished Stone



Master Bedroom

Vinyl wall panel

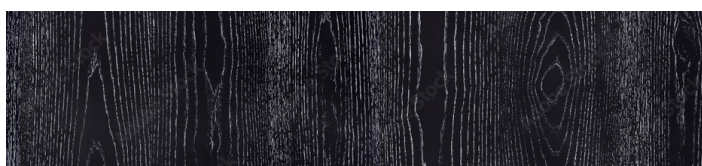


Porcelain Tile



Kitchen

Black Oak Wood Veneer

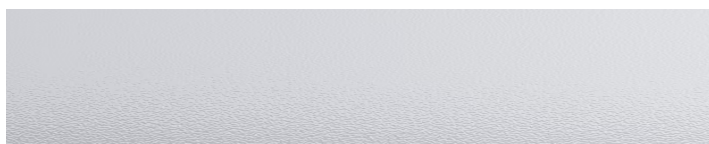


Kashmir White Granite Kitchen Countertop

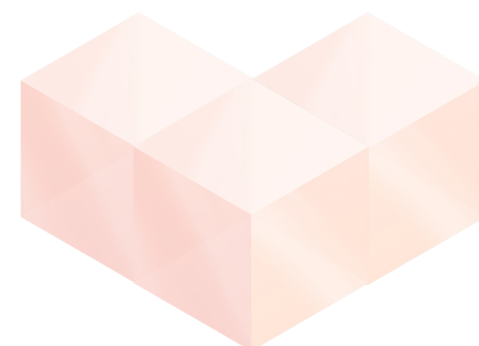


Bathroom

10mm Progressive Bottom Frosted to Top Clear Glass



Stainless Steel Frame

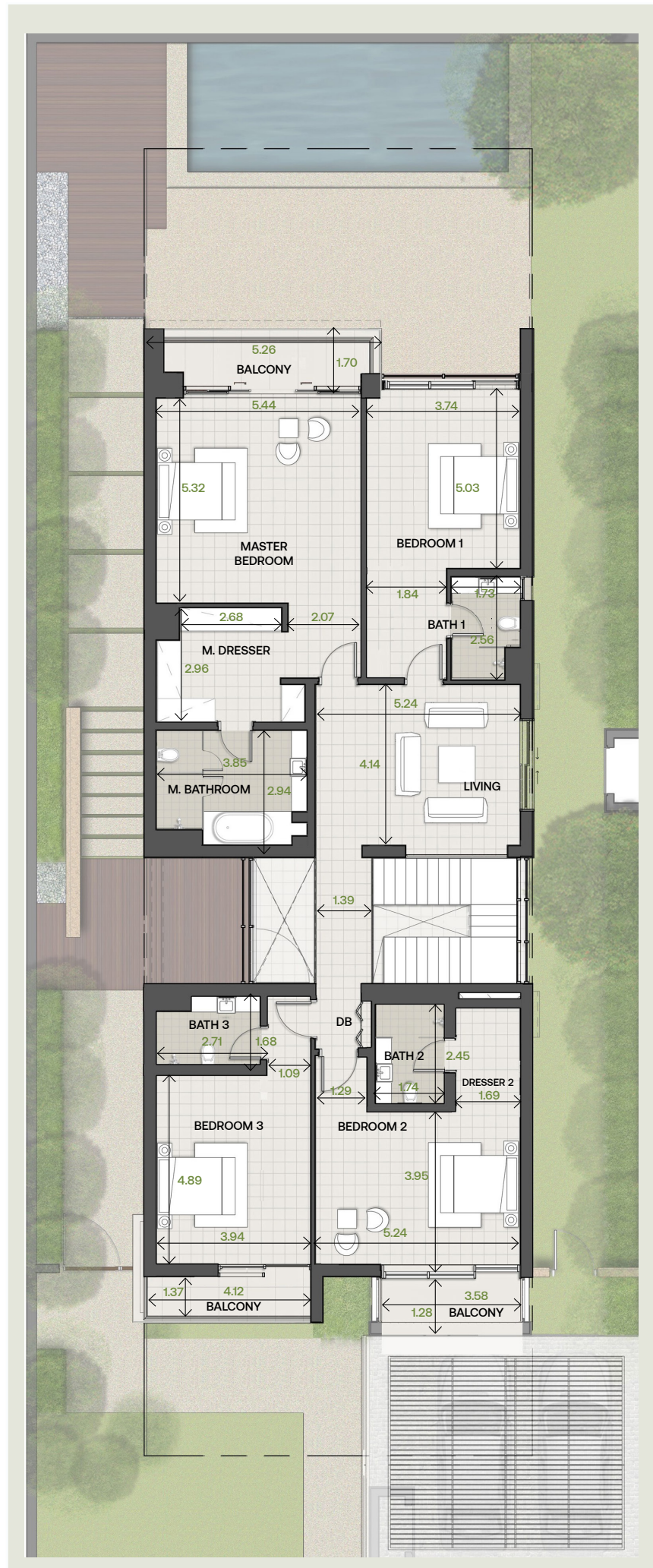


Unit Layout

Ground floor

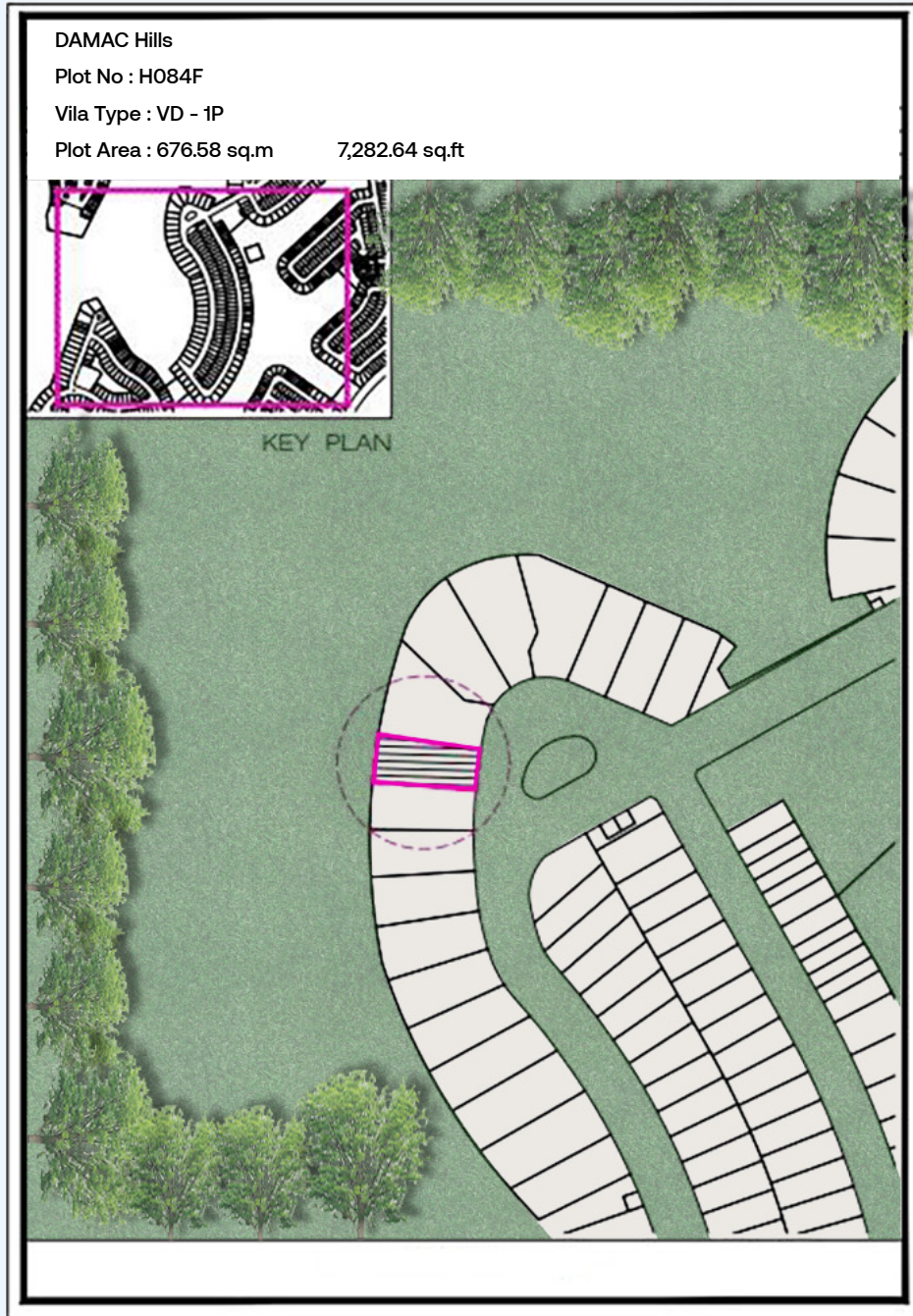


First floor

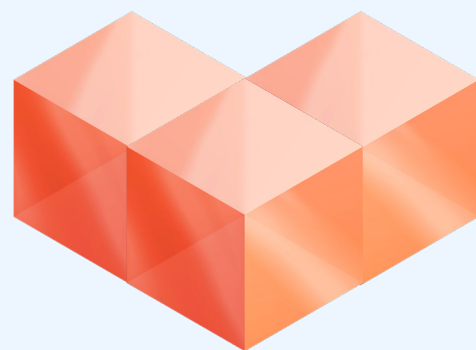
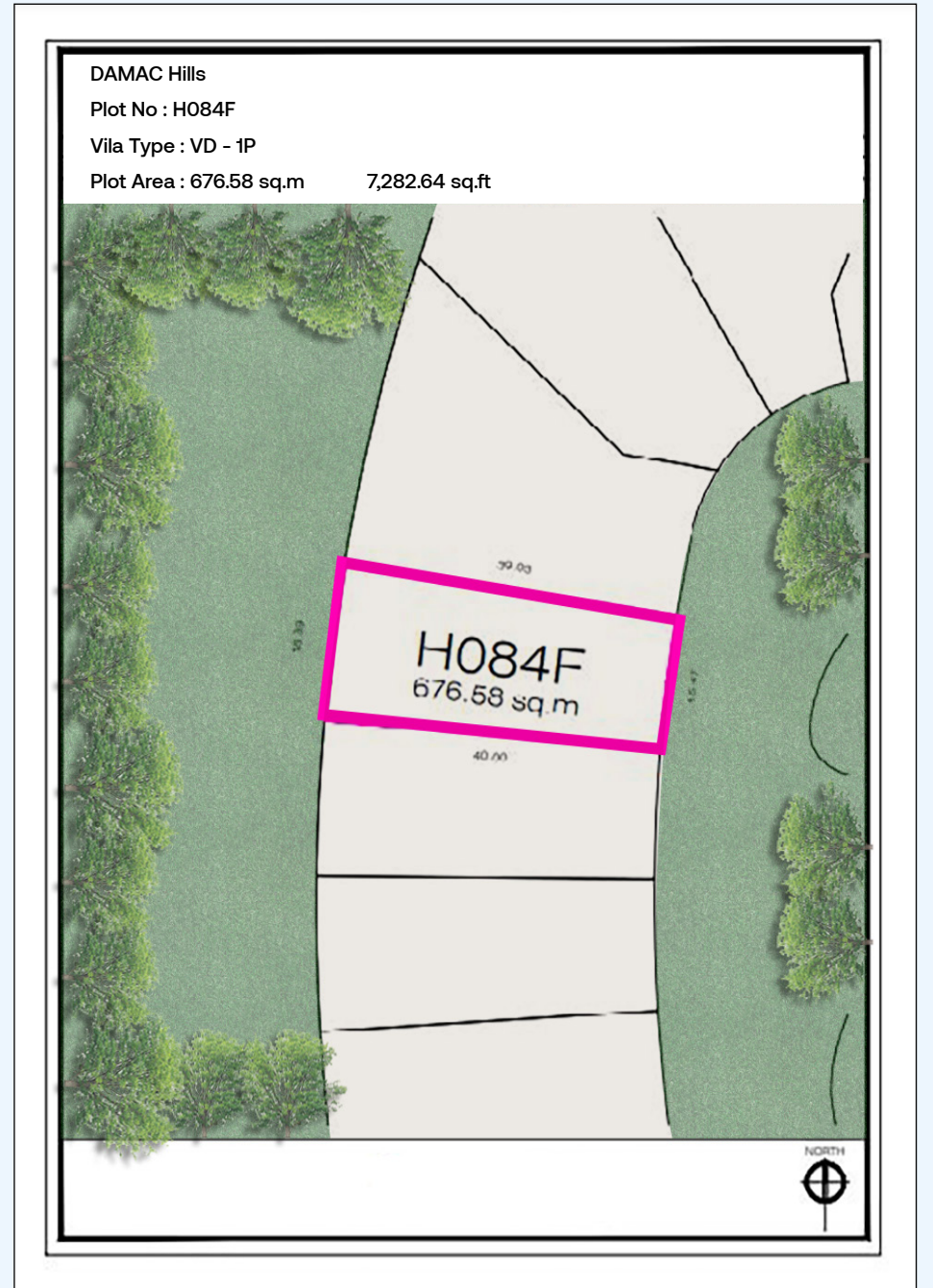


*Measurement is in meters

Location Plan



Plot Plan



OWN IT.
NOW YOU CAN