

360 RIVERSIDE CRESCENT

QUOTATION

Sobha Hartland -II 360 Riverside Crescent (360 Riverside Crescent)

SH-369316

Floor Number	10
Type	1 BED TYPE A
Unit Number	360 RSC-1001
Saleable Area (Sq.ft)	696
Purchase Price (AED)	1,653,499
Pre- Registration Fees (AED)	67,290

Installment Plan

Installment	% of Purchase Price	Amount (AED)	Payment Dates	Milestone
Booking Amount	20.00%	330,699.75	On Booking	On Booking date
First Installment	10.00%	165,349.88	-	9 Months from booking date
Second Installment	10.00%	165,349.88	-	15 Months from booking date
Third Installment	10.00%	165,349.88	-	21 Months from booking date
Fourth Installment	10.00%	165,349.88	-	27 Months from booking date
Fifth Installment	10.00%	165,349.88	-	33 Months from booking date
Sixth Installment	10.00%	165,349.88	-	39 Months from booking date
Final Installment	20.00%	330,699.75	-	On Completion

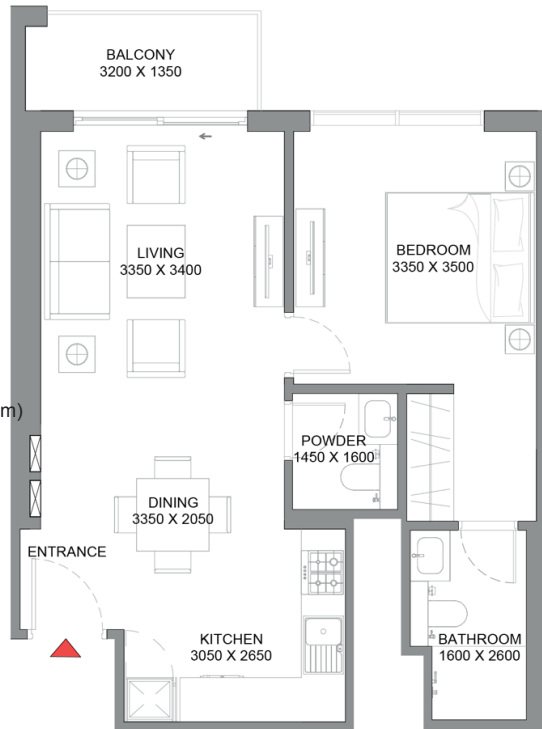
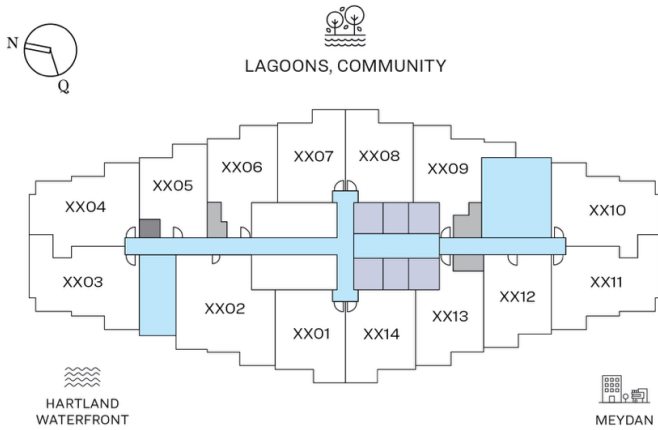
Pre-Registration Fees

Description	Amount (AED)
4% Pre-Registration Charges	66,140.00
Knowledge Fee	40.00
Oqood Fees	1,110.00

1 BEDROOM APARTMENT TYPE A

Total Saleable Area

SUITE= 642 SQFT
BALCONY= 54 SQFT
TOTAL = 696 SQFT



Oxana Kravets (oxana.kravets@sobharealty.com)

Jan 23, 2024 04:54 PM



Disclaimer: 1. All dimensions are in metric, measured to wall finishes. 2. All materials, dimensions & drawings are approximate. 3. Information is subject to change without notice, at developer's absolute discretion. 4. Actual area may vary from the stated area. 5. Drawing are not to scale. 6. All images used are for illustrative purpose only and do not represent the actual size, features, specifications, fittings and furnishings. 7. The developer reserves the right to make revisions/ alterations, at its absolute discretion, without any liability whatsoever.

Print Quotation:

Print Quotation