

320 RIVERSIDE (CRESCENT)

QUOTATION

Sobha Hartland -II 320 Riverside Crescent (320 Riverside Crescent)

SH-369304

Floor Number	4
Type	1 BED - TYPE B
Unit Number	320 RSC-402
Saleable Area (Sq.ft)	754
Purchase Price (AED)	1,620,434
Pre- Registration Fees (AED)	65,968

Installment Plan

Installment	% of Purchase Price	Amount (AED)	Payment Dates	Milestone
Booking Amount	20.00%	324,086.70	On Booking	On Booking date
First Installment	10.00%	162,043.35	-	9 Months from booking date
Second Installment	10.00%	162,043.35	-	15 Months from booking date
Third Installment	10.00%	162,043.35	-	21 Months from booking date
Fourth Installment	10.00%	162,043.35	-	27 Months from booking date
Fifth Installment	10.00%	162,043.35	-	33 Months from booking date
Sixth Installment	10.00%	162,043.35	-	39 Months from booking date
Final Installment	20.00%	324,086.70	-	On Completion

Pre-Registration Fees

Description	Amount (AED)
4% Pre-Registration Charges	64,818.00
Knowledge Fee	40.00
Oqood Fees	1,110.00

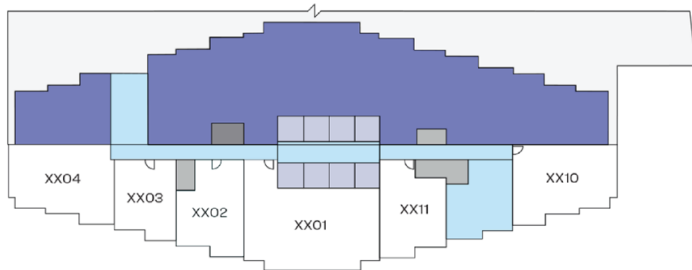
1 BEDROOM APARTMENT TYPE B

Total Saleable Area

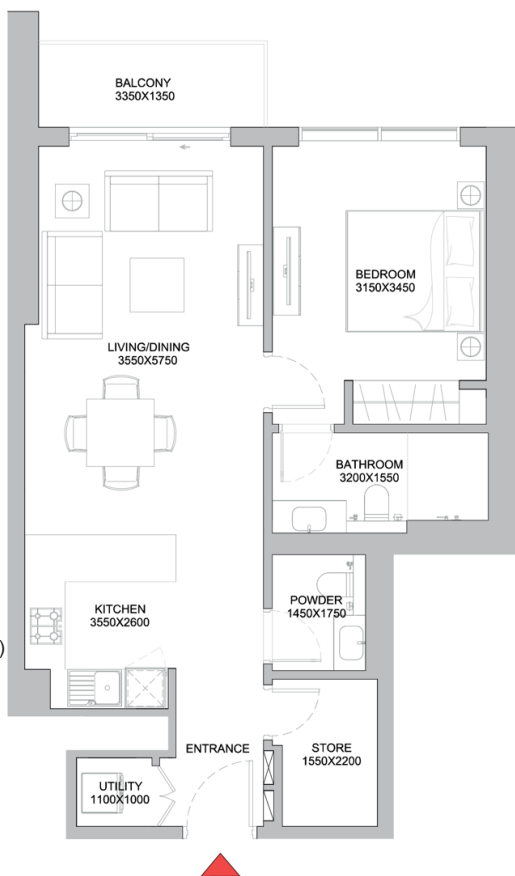
SUITE= 694 SQFT
BALCONY= 59 SQFT
TOTAL = 754 SQFT



LAGOONS, COMMUNITY



NAD AL SHEBA



Oxana Kravets (oxana.kravets@sobharealty.com)

Jan 23, 2024 04:50 PM



Disclaimer: 1. All dimensions are in metric, measured to wall finishes. 2. All materials, dimensions & drawings are approximate. 3. Information is subject to change without notice, at developer's absolute discretion. 4. Actual area may vary from the stated area. 5. Drawing are not to scale. 6. All images used are for illustrative purpose only and do not represent the actual size, features, specifications, fittings and furnishings. 7. The developer reserves the right to make revisions/ alterations, at its absolute discretion, without any liability whatsoever.

Print Quotation:

Print Quotation