

310 RIVERSIDE (R)ESCENT

QUOTATION

Sobha Hartland -II 310 Riverside Crescent (310 Riverside Crescent)

SH-369310

Floor Number	19
Type	1 BED TYPE A
Unit Number	310 RSC-1901
Saleable Area (Sq.ft)	696
Purchase Price (AED)	1,587,359
Pre- Registration Fees (AED)	64,645

Installment Plan

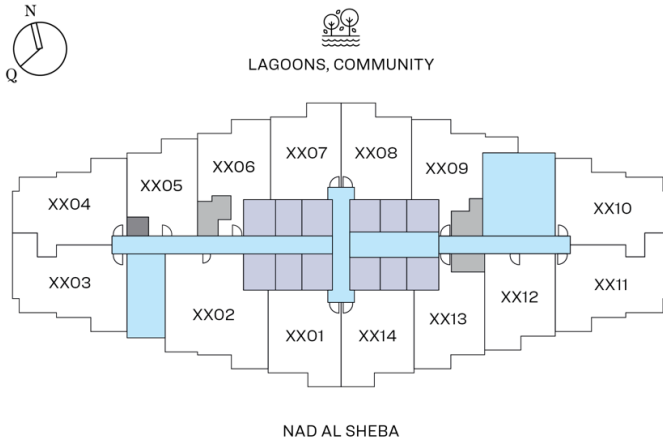
Installment	% of Purchase Price	Amount (AED)	Payment Dates	Milestone
Booking Amount	20.00%	317,471.76	On Booking	On Booking date
First Installment	10.00%	158,735.88	-	9 Months from booking date
Second Installment	10.00%	158,735.88	-	15 Months from booking date
Third Installment	10.00%	158,735.88	-	21 Months from booking date
Fourth Installment	10.00%	158,735.88	-	27 Months from booking date
Fifth Installment	10.00%	158,735.88	-	33 Months from booking date
Sixth Installment	10.00%	158,735.88	-	39 Months from booking date
Final Installment	20.00%	317,471.76	-	On Completion

Pre-Registration Fees

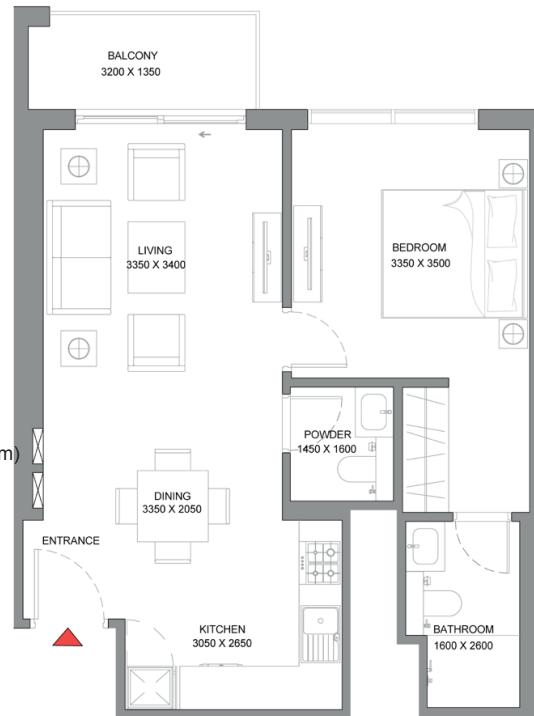
Description	Amount (AED)
4% Pre-Registration Charges	63,495.00
Knowledge Fee	40.00
Oqood Fees	1,110.00

1 BEDROOM APARTMENT TYPE A

Total Saleable Area
 SUITE= 642 SQFT
 BALCONY= 54 SQFT
 TOTAL = 696 SQFT



NAD AL SHEBA



Oxana Kravets (oxana.kravets@sobharealty.com)

Jan 23,2024 04:51 PM



Disclaimer: 1. All dimensions are in metric, measured to wall finishes. 2. All materials, dimensions & drawings are approximate. 3. Information is subject to change without notice, at developer's absolute discretion. 4. Actual area may vary from the stated area. 5. Drawing are not to scale. 6. All images used are for illustrative purpose only and do not represent the actual size, features, specifications, fittings and furnishings. 7. The developer reserves the right to make revisions/ alterations, at its absolute discretion, without any liability whatsoever.

Print Quotation:

Print Quotation