

Priebe-ScanRig AB
<http://www.psrig.com>

Case study

Sparbanken Black Box, Vara

Date:
Location:
Client:

2019
Vara, Sweden
PEAB Sverige AB



SPARBANKEN BLACK BOX, VARA

We are proud to have helped equip the newly built extension to Vara konserthus.

TAGS: FLEXRAIL / FLEXCONTROL / GIS / CHAIN HOISTS / TRUSS / MOBILE STAGES / AUDIENCE SYSTEMS / SEATING SOLUTIONS / NEW PRODUCTION / MOLTON TEXTILES / MOTORIZED PROJECTION SCREENS



Location: Vara, Sweden

Year: 2019

Developer: [Vara kommun](#)

Client: [PEAB Sverige AB](#)

Project manager: [Kim Ekblad](#), +46 72-552 18 19

Description: PSRIG was chosen by developer PEAB to deliver and install: a new lifting system, an advanced control system, a flexible seating solution, curtain tracks with complete coverings, a large projection screen, black truss and measures for acoustic control in the new [Sparbanken Black Box](#) extension at [Vara konserthus](#).

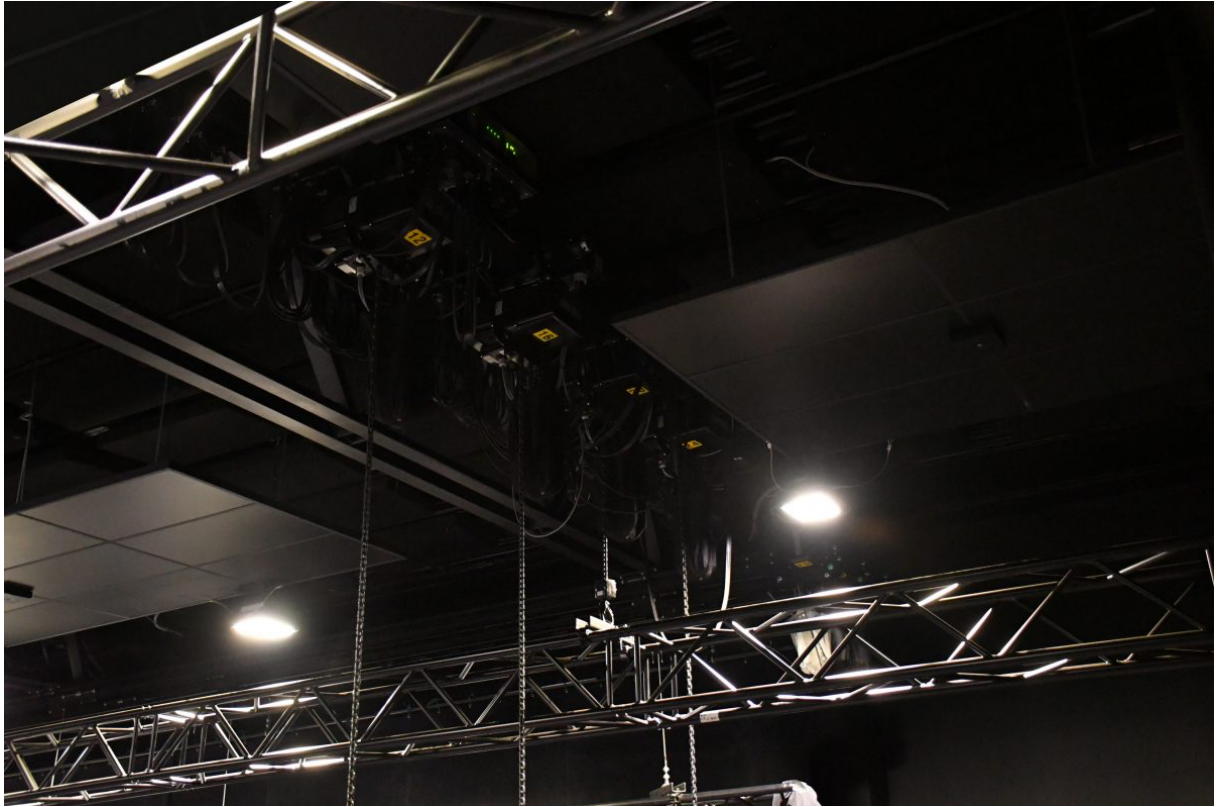
The large multifunctional premise is intended to accommodate larger audiences and conference groups. The all-black interior is designed with a flat floor, generous ceiling height, and retractable seating – offering great flexibility to transform the venue depending on activity.

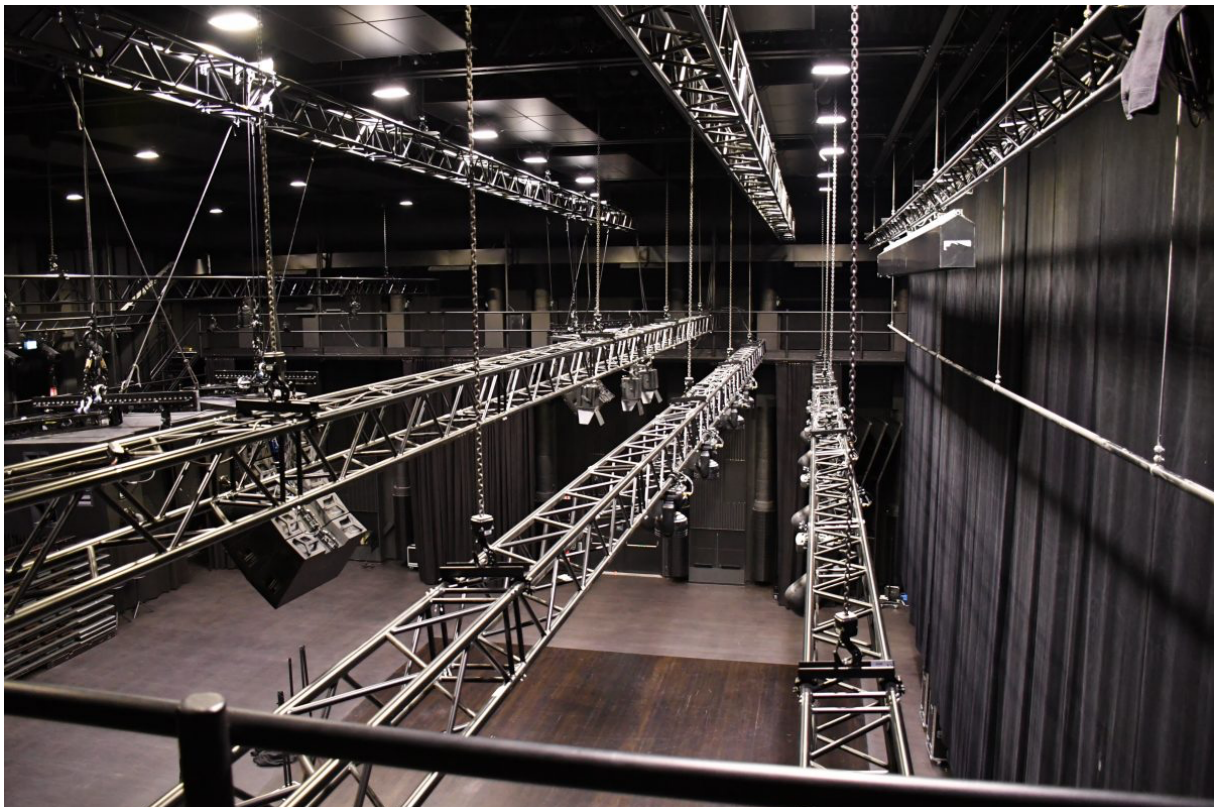


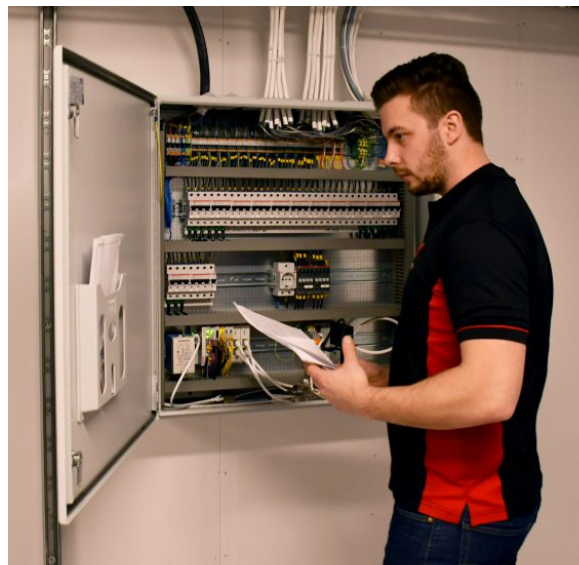
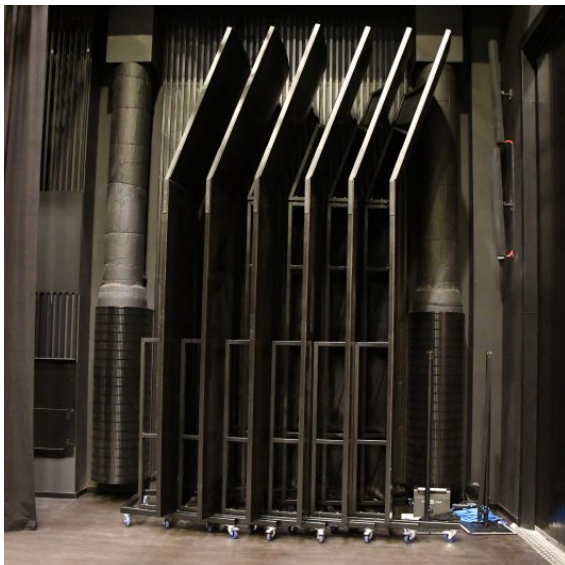
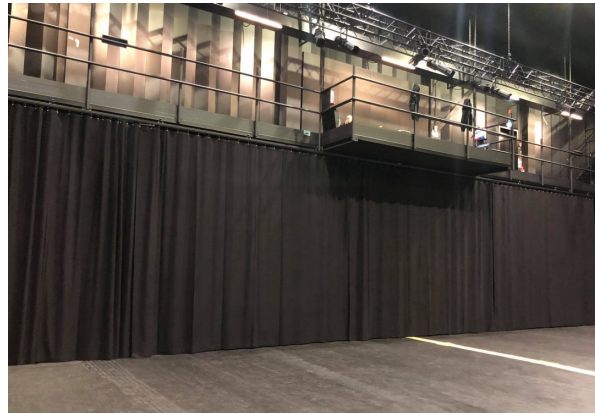
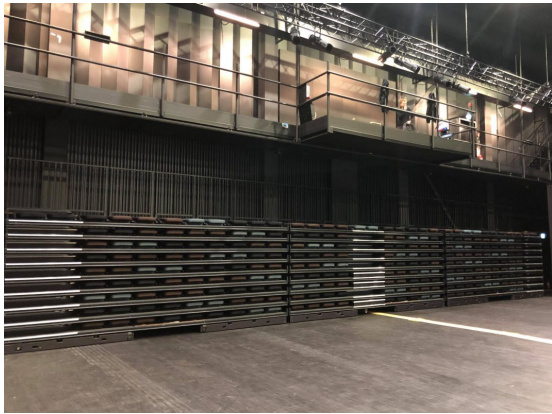
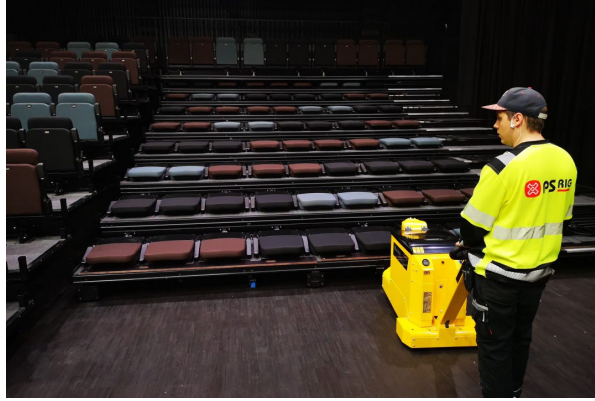
Used products:

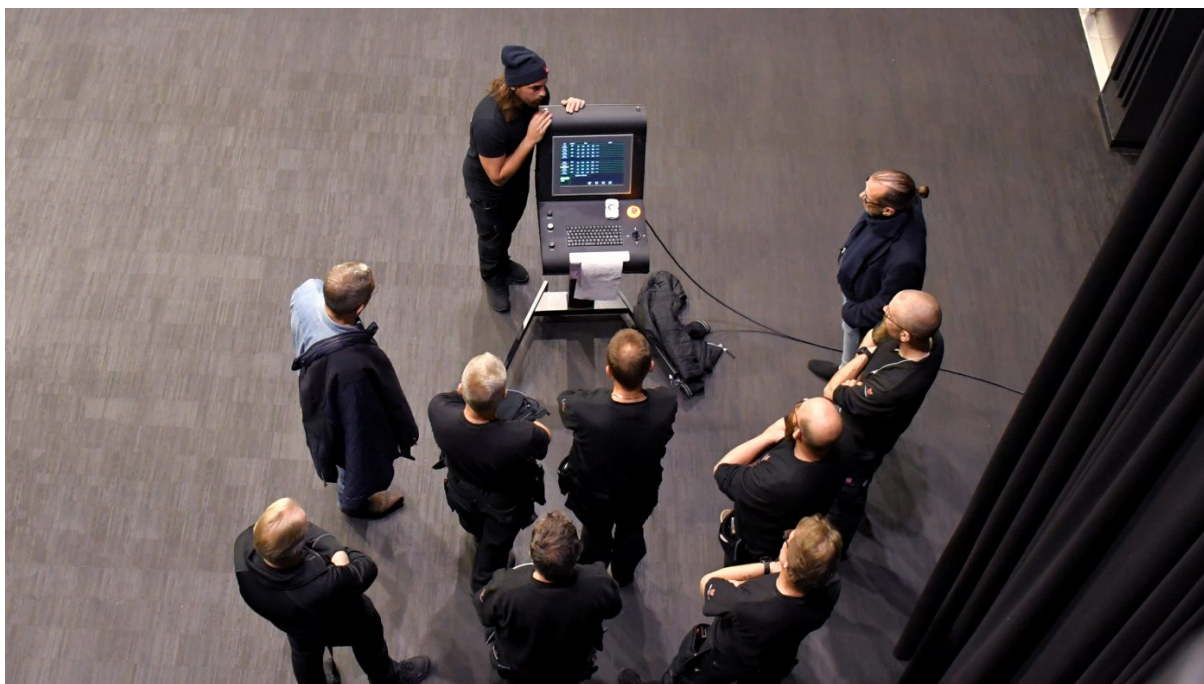
- 24 fixed LP1000 D8+ chain hoists from **#GIS**
- 3 **#FlexBeam** modular stage hoist systems on movable beam trolleys (equipped with two LP250 D8+ and one LP500 D8+ chain hoists) all controlled by our self-developed **#FlexControl** system
- 250m of **#FlexRail** walk-along curtain tracks with high-quality Molton curtains in black
- A mobile retractable seating solution and stackable chairs from **#Audience Systems**
- **#FlexRoll** motorized blinds and wooden panels on wheels for acoustic control
- A motorized projection screen measuring 800x400cm
- Black truss (mainly HT44 and HT33) from **#TAF**
- Mobile stages from **#MOTT**
- Flight cases from **#Amptown Cases** to hold rigging accessories











Contact Kim Ekblad +46 72-552 18 19

Address Priebe-ScanRig AB

Kosterögatan 13
211 24 Malmö
Sweden

Malmgatan 18
602 23 Norrköping
Sweden

(head office & sales)

(office, workshop & warehouse)

Org.nr. 556924-7793

Phone +46 10-211 50 50

E-mail info@psrig.com
sales@psrig.com
support@psrig.com

Website www.psrigrig.com

© 2022 Priebe-ScanRig AB, Malmö and Norrköping