

Technical data sheet - LED lighting for TX units

Description

The TX Telescopic Platform System can be fitted with 9-spot LED downlighting strips beneath the nose of each half-step. A simple way to improve audience safety, LED lighting provides greatly improved visibility.

Features

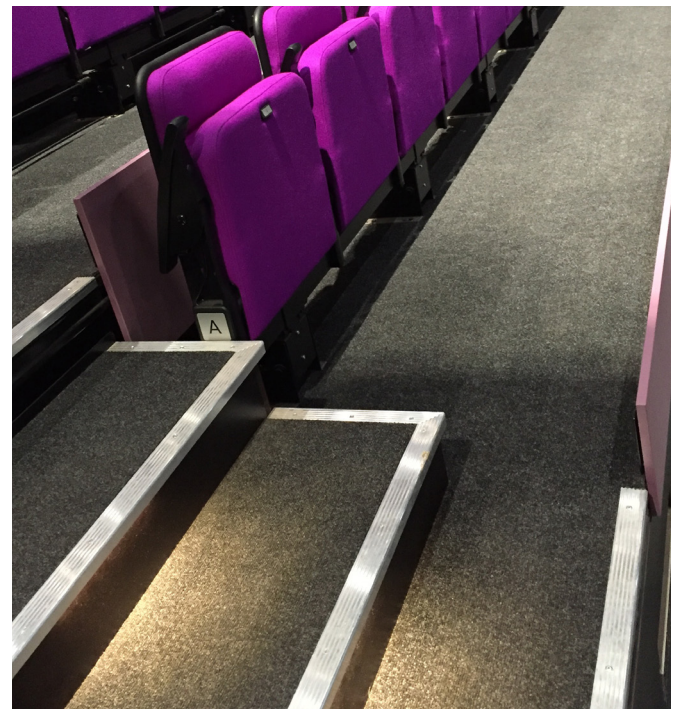
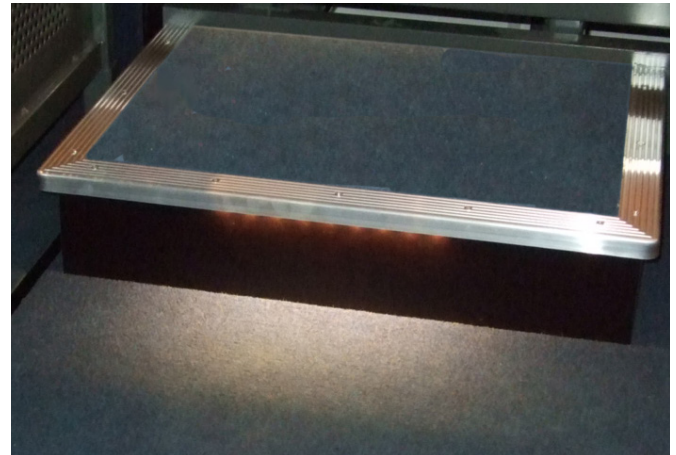
- Low power consumption - runs off 12V DC power supply,
- Avoids glare associated with standard energy lighting
- Long lifetime - up to 50,000 hours, equivalent to over 5 years' continuous usage
- Optional 1 hour battery back-up facility for continued illumination in the event of power failure
- Dimming function allows operator to set optimum lighting level for their auditorium.

Characteristics

Voltage	12V DC regulated (transformer supplied)
Current	225 mA per LED light strip
Colour	Warm white. Other options are available.
Wavelength (λ) /	
Colour Temperature	2800-3200K (Warm white).
Light Output	125 lm
Luminous intensity	5000 mcd

Dimmer

A remote control with two programmable memory functions is provided to control the brightness.



Installation

Where the TX System is power operated, no additional electrical supply or socket is required to power the LED lighting.

Where the TX System is not power operated, an additional electrical socket may be required. Please contact Audience Systems to discuss options.