



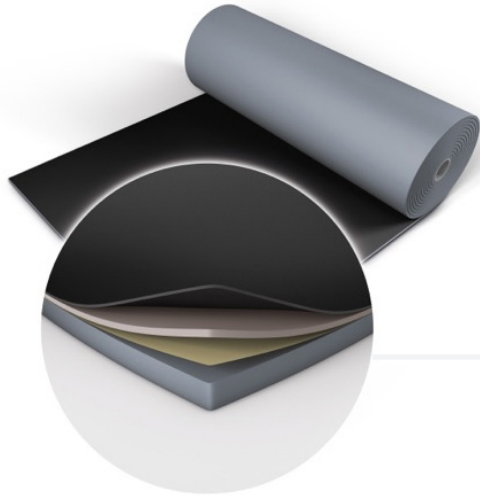
DANCE FLOORS

floors for dance, performing
arts, entertainment and display



Harlequin Allegro – Vinyl Floors

Popular semi-sprung vinyl dance floor. Can help to reduce performer fatigue and impact injuries.



SKU: 805-3115001
Harlequin Allegro Black

Features

- For both permanent or portable use
- Roll width: 1,5m
- Thickness: 8,5mm
- Weight: 6kg/m²
- Fire rating: Cfl-s1 (EN 13501-1)

Configuration

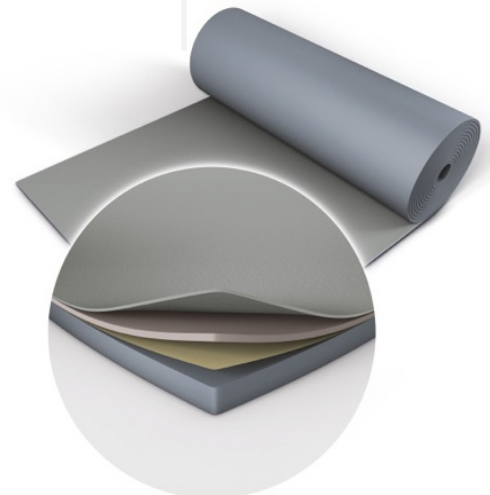
- Roll length: 10m, 15m or 20 m
- Colours: Black or Grey

Semi-sprung vinyl dance floor

Harlequin Allegro is ideal for contemporary, modern, hip hop, jazz and street dance, as well as aerobics and zumba, as it can help to reduce performer fatigue and impact injuries.

Harlequin Allegro was developed to protect against hard sub-floors and is a popular choice as a semi-sprung flooring option. It's the thickest roll-out dance floor available worldwide and provides great protection for dancers due to its point-elasticity and slip-resistant dance surface.

Harlequin Allegro is a substantial heavy-duty floor. It's specified for permanent installation within dance institutions, dance studios, schools and gymnasiums, although it can also be utilised as a loose-lay option.



SKU: 805-3115001
Harlequin Allegro Grey



Harlequin Cascade – Vinyl Floors

A versatile vinyl dance floor for multipurpose use, including percussive dances and concerts/operatic performances.



Versatile vinyl dance floor

Harlequin Cascade is ideal for ballet, contemporary, modern and theatrical use, as well as percussive including flamenco, Irish and tap, aerobics, hip-hop, jazz, street, salsa, multipurpose use, concerts and for operatic performances.

Harlequin Cascade still delights generations of professional dancers, artistic directors and technical and stage managers as the ultimate heavy-duty dance floor. The silky smooth embossed surface that's often described as giving 'warmth' to a performance, also provides deceptively good grip, as well as a high-quality base for lighting designers.

Harlequin Cascade is specified for loose-lay or permanent installation within dance institutions, dance studios, schools and theatres and is an excellent choice as the vinyl dance surface in conjunction with a Harlequin sprung floor.

Features

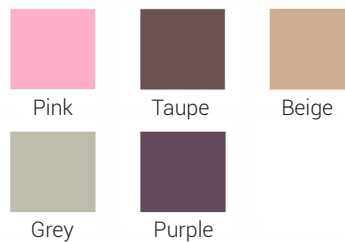
- For both permanent or portable use
- Roll width: 2m
- Thickness: 2mm
- Weight: 2,6kg/m²
- Fire rating: Bfl-s1 (EN 13501-1)

Configuration

- Roll length: 10m, 15m, 20m or 25m
- Colours: Black (501), Grey (582), White (100) or Dark Grey (406)
- Special Colours: Beige (110), Grey (1504), Pink (290), Mauve (628) or Taupe (828)

SKU: 805-311306

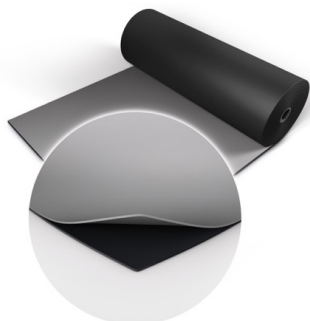
Special Colours





Harlequin Duo – Vinyl Floors

The original double-sided dance and stage floor. A lightweight floor that is quick to install.



SKU: 805-3111 01
Harlequin Duo Black/Grey



SKU: 805-3111 02
Harlequin Duo White/Black

Vinyl dance and stage floor

Harlequin Duo is the original double-sided dance and stage floor. It's a lightweight calendared vinyl that rolls out quickly, lays flat and stays flat. It's hard-wearing and slip-resistant on both sides, thus providing two floors in one!

Harlequin Duo is suitable for ballet, contemporary, percussive dance including flamenco, Irish and tap, multi-purpose use, hip-hop, jazz, street, aerobics, zumba, concerts, display, exhibitions, television, theatres and for operatic performances.

Harlequin Duo is our most versatile loose-lay floor and is extremely popular among our extensive clientele. It's ideally laid on any hard, smooth surface and is particularly suited to touring due to ease of handling and portability.

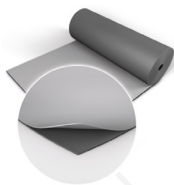
Configuration

- Roll width: 1,5m or 2m
- Roll length: 10m, 15m, 20m, 25m or 30m
- Colours: Black/Grey, White/Black, Mid grey/Light grey,

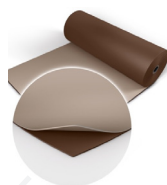
Features

- For both permanent or portable use
- Roll width: 2m
- Thickness: 2mm
- Weight: 2,6kg/m²
- Fire rating: Bfl-s1 (EN 13501-1)

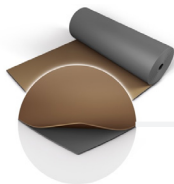
Mid grey/Lightgrey



Dark brown/Beige



Dark grey/Caramel

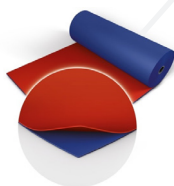


SKU: 805-3113 03
Special Colour

Chroma key green/Yellow



Chroma key blue/Red



Chroma key green/Chroma key blue



Black/Projection grey





Harlequin Duo Pro - Vinyl Floors

The original double-sided dance and stage floor. It's a hardwearing yet lightweight vinyl with quick installation that is slip-resistant on both sides.

A stable vinyl dance and stage floor with mineral fibre

Established over four decades ago, Harlequin Duo is the original double-sided dance and stage floor. It's a hardwearing yet lightweight calendared vinyl that is slip-resistant on both sides, thus providing two floors in one! Special wear-coats make it easy to maintain and it rolls out quickly.

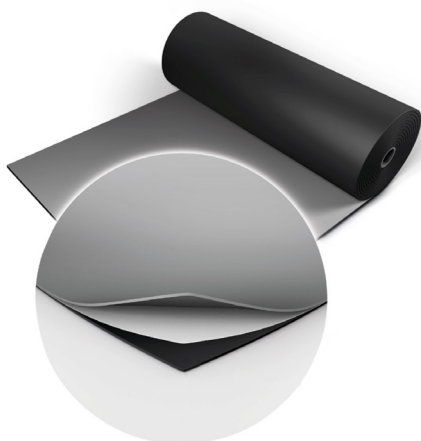
Harlequin Duo Pro has the same features as Harlequin Duo but with the addition of a new mineral fibre interply layer, it is now even more dimensionally stable and therefore relaxes and lays flat even quicker.

Ideally laid onto any hard, smooth surface, Harlequin Duo Pro is suited to touring due to ease of handling and portability and is suitable for a wide variety of uses including ballet, contemporary, percussive dance including flamenco, Irish



SKU: 805-3111 05

Harlequin Duo Pro - Black/



SKU: 805-3111 04

Harlequin Duo Pro - Black/Grey

Features

- For portable use
- Roll width: 2m
- Thickness: 1,5mm
- Weight: 2,25 kg/m²
- Bfl-s1 (EN 13501-1)

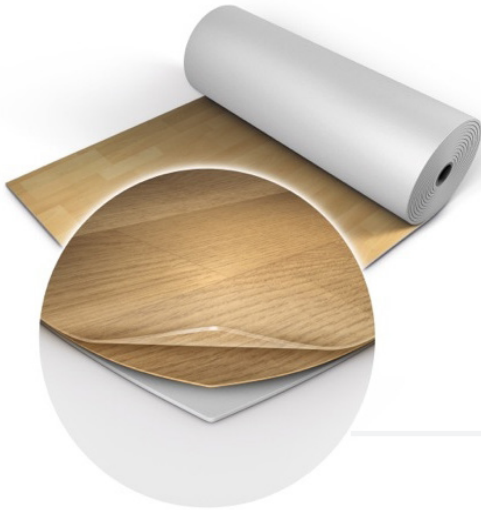
Configuration

- Roll length: 10m, 15m, 20m, 25m or 30m
- Colours: Black/Grey, Black/White



Harlequin Fiesta - Vinyl Floors

Vinyl dance floor with wooden look but without the associated cleaning or maintenance problems.



SKU: 805-311701

Harlequin Fiesta - Brown

Features

- For permanent use
- Roll width: 2m
- Colour: Oak finish/Brown
- Thickness: 2mm
- Weight: 3kg/m²
- Fire rating: Bfl-s1 (EN 13501-1)

Configuration

- Roll length: 20m or 25m

Vinyl dance floor with wooden look

Harlequin Fiesta is suitable for ballroom, salsa, percussive including flamenco, Irish and tap, multi-purpose use, hip-hop, jazz, street, aerobics, zumba and for use in theatres and for operatic performances.

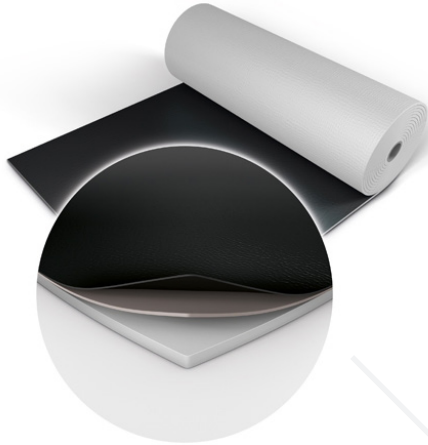
Harlequin Fiesta was developed because of the need for a floor which looked exactly like wood, but without all the associated problems of cleaning and maintenance. The floor's oak strip effect performance surface provides the ideal solution.

Harlequin Fiesta is specified for permanent installation, when the joins are welded to provide a continuous surface. It can be laid on any hard, smooth sub-floor and is an excellent choice as the vinyl performance surface in conjunction with a Harlequin sprung floor.



Harlequin FreeStyle - Vinyl Floors

A vinyl dancefloor for hip-hop and urban dances with less slip-resistance and optimal comfort.



SKU: 805-311702

Harlequin FreeStyle - Black

Features

- For permanent and portable use
- Roll width: 1,5m
- Thickness: 4,5mm
- Weight: 2,67kg/m²
- Fire rating: Cfl-s1 (EN 13501-1)

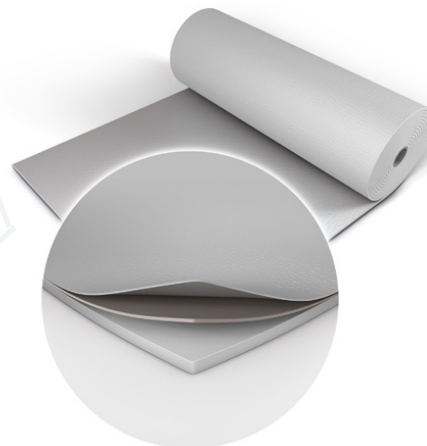
Configuration

- Roll length: 15m, 20m, 25m, or 30m
- Colour: Black or Grey

Vinyl dancefloor for hip-hop and urban dances

Specially developed to meet the needs of street dancers, Harlequin FreeStyle is the ideal dance floor for hip-hop and contemporary dance, with its slight cushioning to give optimal comfort. Developed to meet the needs of hip-hop and street dancers, who wanted a floor that provided less slip-resistance, enabling them to move freely yet safely at the same time.

Harlequin FreeStyle is ideal for hip-hop, jazz and street dance, as well as contemporary and mod-



SKU: 805-311701

Harlequin FreeStyle - Black



Harlequin Hi-Shine - Vinyl Floors

A glossy vinyl display floor suitable for e.g. television, concerts, display and exhibitions.

Vinyl display floor with glossy finish

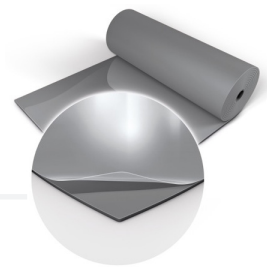
Harlequin Hi-Shine is the ideal floor for television, concerts, display and exhibitions, as well as for use within theatres and for operatic productions. It rolls out easily and provides a breathtaking glossy finish.

Harlequin Hi-Shine adds lustre to any occasion. It's specified for loose-lay installation and its special high-gloss surface is superior to urethane for scratch-resistance, providing a shiny, reflective surface.

Harlequin Hi-Shine is a striking choice for opera, television sets, high-profile entertainment, fashion shows, product launches, parties, exhibitions, window displays, artistic use, etc. It's purchased by a wide range of production companies and utilized on major TV shows and music videos!



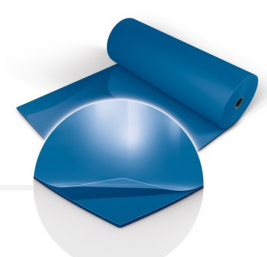
SKU: 805-31160-01
Black



SKU: 805-31160-03
Grey



SKU: 805-31160-04
White



SKU: 805-31160-05
Dark blue



SKU: 805-31160-02
Silver



SKU: 805-31160-07
Gold



SKU: 805-31160-06
Red

Features

- For portable use
- Roll width: 1,5m
- Thickness: 1,5mm
- Weight: 1,96kg/m²
- Fire rating: Bfl-s1 (EN 13501-1)

Configuration

- Roll length: 20m or 30m
- Colour (glossy): Black, White, Red, Dark Blue, Grey, Gold or Silver



Harlequin Marine - Vinyl Floors

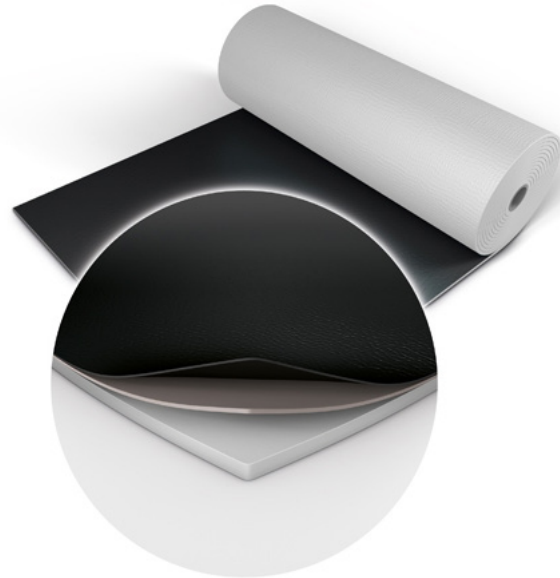
Versatile vinyl floor meeting fire ratings and marine standards

Harlequin Marine was specially developed to meet Fire Ratings IMO FTP Code part 2 & 5 and Marine standards. It is a hardwearing and versatile vinyl dance and stage floor that is ideal for multi-purpose use on boats and ships.

Harlequin Marine is extensively installed on cruise liners and conforms to marine standards and fire ratings. It's specified for permanent installation and is suitable for fitting within confined spaces on marine vessels and for scenery docks on cruise ships.

Harlequin Marine is also suitable for multi-purpose use, percussive dance including flamenco, Irish and tap, concerts, television, theatre and operatic performances.

Harlequin Marine is a hard-wearing, homoge-



SKU: 805-3119-03

Black

Features

- For permanent use
- Roll width: 2m
- Roll length: 20m
- Colour: Black
- Thickness: 2mm
- Weight: 3,5kg/m²
- Fire rating: IMO FTP Code part 2 & 5



Harlequin Showfloor - Vinyl Floors

Lightweight vinyl display floor for quick installation. Suitable for temporary floors with light to medium traffic.

Vinyl display floor

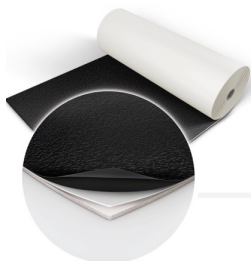
Harlequin Showfloor is perfect for use as a temporary floor that encounters light to medium 'traffic'. It can be laid on any hard, smooth surface, for example, stage decking, wood, hardboard, terrazzo, concrete, etc. and comes in a range of colours.

Harlequin Showfloor is suitable for use as a short life floor and is ideal for fashion catwalks, exhibition stands, stage sets, events, shows and art displays.

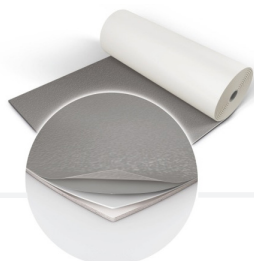
Harlequin Showfloor is lightweight, lays flat quickly and stays flat. It has an embossed display surface that helps to prevent scuff marks and its cellular foam backing provides comfort under foot and helps to reduce noise pollution.

Features

- For portable use
- Roll width: 2m
- Thickness: 2,6mm
- Weight: 1,7kg/m²
- Fire rating: Bfl-s1 (EN 13501-1)



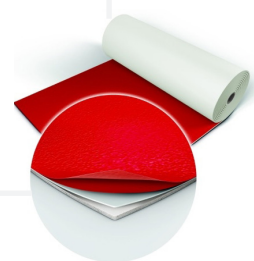
SKU: 805-31180-01
Black



SKU: 805-31180-02
Dark Grey



SKU: 805-31180-03
White



SKU: 805-31160-04
Red

Configuration

- Roll length: 10m, 15m, 20m, 25m, or 30m
- Colour: Black, White, Red or Grey



Harlequin Standfast - Vinyl Floors

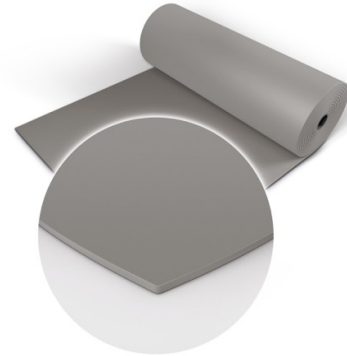
A heavy-duty performance vinyl floor for permanent installation.

Durable vinyl dance and stage floor

Harlequin Standfast is a hard-wearing, durable performance floor that's intended for permanent installation into adhesive, when the joins are heat welded to form a continuous performance surface.

Harlequin Standfast is suitable for ballet, contemporary, modern, percussive dance including flamenco, Irish and tap, multi-purpose use, hip-hop, jazz, street, aerobics, zumba, television, theatre and for operatic performances.

Harlequin Standfast has a slip-resistant surface and is ideal as a permanent multi-purpose dance or stage

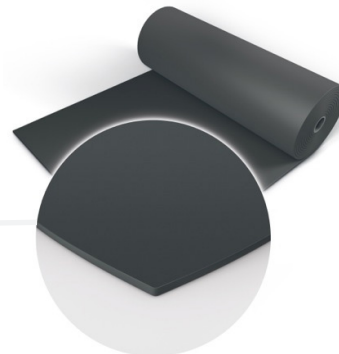


SKU: 805-3114-03

Grey

Features

- For permanent use
- Roll width: 1,5m
- Thickness: 2,6mm
- Weight: 3,5kg/m²
- Fire rating: Cfl-s1 (EN 13501-1)



SKU: 805-3114-02

Dark Grey



SKU: 805-3114-01

Black

Configuration

- Roll length: 15m or 20m
- Colour: Black, Grey or Dark grey



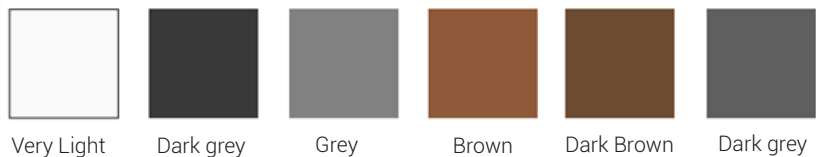
Harlequin Studio - Vinyl Floors

A durable vinyl dancefloor formulated to the demands of dancers.

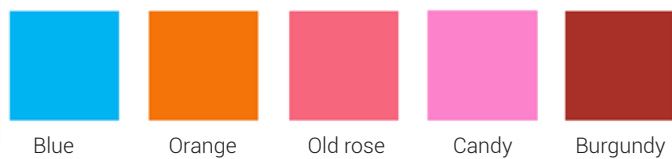
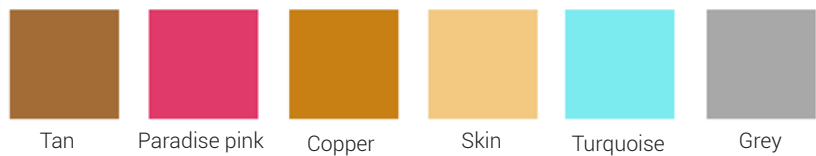
Durable vinyl dance floor

Harlequin Studio is produced from a particularly hard-wearing vinyl and its formulation focuses on the demands of dancers. The result is a slip-resistant floor that offers dancers added confidence for demanding choreography and movement.

Harlequin Studio's firm but lightweight foam backing provides protection against hard sub-floors and is a great choice when touring. It's ideal for aerobics, zumba, hip-hop, jazz, street, ballet, contemporary and modern dance.



SKU: 805-3112 05
Special Colour







Harlequin Actitherm - Sprung floors

A permanent sprung floor system that can be installed over under-floor heating and can be finished with a choice of Harlequin vinyl, solid hardwood or engineered board



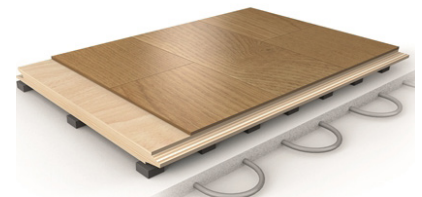
SKU: 805-31XXXX
* With Vinyl



SKU: 805-31XXXX
Maple



SKU: 805-31XXXX
Beech



SKU: 805-31XXXX
Oak

A sprung floor for installing over underfloor heating

Harlequin Actitherm is a permanent sprung floor system that can be installed over underfloor heating and can be finished with a choice of Harlequin vinyl, solid hardwood or engineered board.

Actitherm is comprised of 18mm structural plywood, topped with 6mm flooring grade plywood* which is mechanically fixed and glued (to the 18mm plywood layer), both are laid in a brickwork configuration, with the 6mm layer being laid at right angles to the first layer, thus avoiding any joints coinciding. The joints are finished using a smoothing compound to create a seamless substrate. Shock absorption and energy return is enhanced by the dual density elastomer blocks, which are attached at predetermined intervals to the underside.

Actitherm is designed for installation by our own highly-skilled technical team and all work is fully guaranteed. Different surface options include:

- A Harlequin vinyl performance floor, selected from our range
- Solid hardwood – in beech, oak or maple
- Engineered board with a hardwood wear layer – in beech, oak or maple.

If a Harlequin vinyl performance floor is chosen, a moisture resistant suspension board will be included underneath, along with a colour matched composite edging profile,

(* The 6mm layer is replaced with the chosen solid hardwood or engineered board if this option is chosen.)

PLEASE NOTE: Underfloor heating should not be allowed to exceed 27°C if finished with a Harlequin vinyl floor surface or 30°C if finished with a solid hardwood or engineered board surface.

Features

- For permanent use
- Minimum floor thickness (before inclusion of chosen finish): 43mm
- Minimum floor weight (before inclusion of chosen finish): 18,95kg/m²
- Testing standard: EN 14904-2006
- Maximum point load (BS EN 1195): 789kg

Configuration

Harlequin Activity can be used in conjunction with the following surface finishes:

- Harlequin Cascade
- Harlequin Fiesta
- Harlequin FreeStyle
- Harlequin Marine
- Harlequin Standfast
- Harlequin Studio
- Solid hardwood
- Engineered board



Harlequin Activity - Sprung floors

A "triple sandwich" sprung floor panel system for permanent installation



SKU: 805-316004

Beech

A sprung floor panel system

Harlequin Activity is a permanently installed sprung floor system, based on the well-established 'triple sandwich' construction originated by Harlequin over 30 years ago. It's a fully-floating system with no fixings to the sub-floor and can be laid on any reasonably smooth and flat surface without prior preparation.

Harlequin Activity is shock-damped to avoid a 'trampoline' effect and provides area and point elasticity to offer identical characteristics across the whole floor. It is an 'industry standard' choice with many hundreds of installations worldwide, effectively reducing injuries to both teachers and performers.

Harlequin Activity is installed by our own highly-skilled technical team and all work is fully guaranteed. Different surface options include:

A Harlequin vinyl performance floor, selected from our range
Solid hardwood – in beech, oak or maple
Engineered board with a hardwood wear layer – in beech, oak or maple.

If a Harlequin vinyl performance floor is chosen, a colour matched composite edging profile will be installed around the finished edge. If solid hardwood or engineered board is chosen, the skirting will 'optional'.

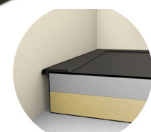
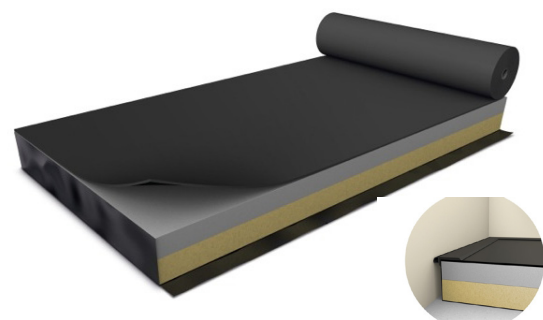
Features

- For permanent use
- Minimum floor thickness (before inclusion of chosen finish): 46mm
- Minimum floor weight (before inclusion of chosen finish): 14,1kg/m²
- Testing standard: DIN 18032-2
- Average shock absorption: 59,6%
- Maximum point load (BS EN 1195): 549kg

Configuration

Harlequin Activity can be used in conjunction with the following surface finishes:

- Harlequin Cascade
- Harlequin Fiesta
- Harlequin Standfast
- Harlequin Studio
- Solid hardwood
- Engineered board



SKU: 805-316004

Vinyl



Harlequin Flexity Plus - Sprung floors

A cost-effective self-install sprung floor panel system laid in a brickwork fashion.



SKU: 805-316001

Flexity Plus

Features

- For permanent or semi-permanent use
- Floor panel sizes: 1,125m x 2,250 m
- Dance surface size: 1,089m x 2,214m
- Minimum floor thickness (before inclusion of chosen finish): 37mm
- Minimum floor weight (before inclusion of chosen finish): 11,85 kg/m²
- Testing standard: EN14904-2006
- Average shock absorption: 67%
- Maximum point load: 1126 kg/point
- Fire rating: Bfl-s1 (vinyl floor finishing) / Dfl-S1 (engineered board finishing)

Cost-effective sprung floor panel system

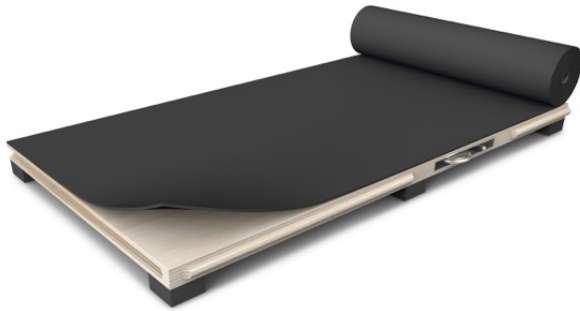
Harlequin Flexity Plus is a cost-effective, self-install sprung floor panel system, designed for permanent or semi-permanent installation. Panels are laid in a brickwork fashion onto the sub-floor, so that cross joints do not coincide. The panels join together by a special tongue and groove, which are glued together for permanent installation or fixed using woodscrews at predetermined points along the tongue and groove for a semi-permanent solution.

Flexity Plus can be installed by anyone with basic DIY skills and full instructions are provided. It's a cost-effective choice, helping to reduce the injury risks associated with dancing or performing on a hard, unsprung floor.

Flexity Plus is finished by choosing an appropriate Harlequin vinyl performance floor from our range for a semi-permanent (portable) floor and an engineered wood finish on a permanent floor.



Harlequin Liberty - Sprung floors



SKU: 805-316002
Liberty (portable)

Features

- For both permanent or portable use
- Minimum floor thickness (before inclusion of chosen finish): 37mm
- Minimum floor weight (before inclusion of chosen finish): 12,5 kg/m²
- Testing standard: DIN 18032-2
- Average shock absorption: 67%
- Maximum load resistance: 670 kg/m²
- Maximum point load (BS EN 1195): 366 kg/pressure point

Configuration

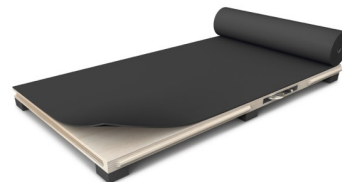
- Floor panel sizes: 1m x 1m or 2m x 1m
- Liberty can be used in conjunction with the following vinyl surface finishes:
-
- Harlequin Cascade (permanent or portable installation)
- Harlequin Duo (portable installation only)
- Harlequin Fiesta (permanent installation only)
- Harlequin Hi-Shine (portable installation only)
- Harlequin Showfloor (portable installation only)
- Harlequin Standfast (permanent installation only)
- Harlequin Studio (permanent or portable installation)

Sprung floor panel system

Harlequin Liberty is a sprung floor panel system, designed for permanent or semi-permanent/portable installation. Panels are laid in a brickwork fashion onto the sub-floor, so that cross joints do not coincide. The panels join together by a rounded tongue and groove, which is secured in place using our 'one turn of the key' latch and lock mechanism.

Harlequin Liberty is finished by choosing an appropriate Harlequin vinyl performance floor from our range. For permanent and semi-permanent use, installation can be carried out either by the customer themselves or by our highly-skilled technical team.

Harlequin Liberty sprung floor panels and the accompanying portable Harlequin vinyl performance floor can also be stored in carts, providing an easy and safe way for stage crew to move them on tour or around a venue.



SKU: 805-316003
Liberty (permanent)



Harlequin Liberty HD - Sprung floors

A durable sprung floor panel system designed to be combined with vinyl floors in a permanent or semi-permanent installation.



SKU: 805-XXXXXX
Flexity Plus

Extra durable sprung floor panel system

Harlequin Liberty HD is a further development of the renowned Liberty panel system, designed with enhanced durability in mind, for more challenging environments. Installed permanently or as a portable floor, panels are laid in a brickwork fashion onto the sub-floor so that cross joins do not coincide. The panels join together by a rounded tongue and groove and are secured using our 'one turn of the key' latch and lock mechanism.

The panels are overlaid with a black polymer resin on both sides and have a textured, high grip pattern on the top surface, which is high wear resistant, anti-slip and weatherproof.

Liberty HD panels can be finished by choosing an appropriate Harlequin vinyl performance floor from our range. For permanent and semi-permanent use, installation can be carried out either by the customer themselves or by our skilled technical team. Harlequin sprung floor panels and the accompanying portable Harlequin vinyl performance floor can also be stored in carts, providing an easy and safe way for stage crew to move them on tour or around a venue.

Features

- For both permanent or portable use
- Minimum floor thickness (before inclusion of chosen finish): 37mm
- Minimum floor weight (before inclusion of chosen finish): 12,5 kg/m²
- Testing standard: DIN 18032-2 and EN 14904-2006
- Average shock absorption: 67%
- Maximum point load (BS EN 1195): 1126 kg/pressure point
- Area deflection: 12,8%
- Rolling load: >1500N
- Vertical deformation: 4,1mm
-



Configuration

- Floor panel sizes: 1m x 1m or 2m x 1m



Harlequin Accessories - Weilding

Gerflor – Rod for hot welding
SKU: 805-313202



Hot welding allows to join the lengths of Harlequin vinyl floor together with a PVC cord. This solution, to be performed by a team of professional installers, has the advantage to seal the floor and avoiding the regular change of the tape. Welding rods used for all types of PVC floors.

Features

- Welding rods used for all types of PVC floors
- Ensures a complete water-tight seal
- Length: 80m

Gerflor – Solvent for cold welding
SKU: 805-313201



Cold welding uses a liquid solvent that joins the vinyl lengths to each other. This technique does not require the use of a professional installer.

- Wait at least four hours before using the rooms.
- Observe all the usual precautions: contains a flammable solvent
- Code: 0548

Features

- Application on all types of PVCs (except homogeneous ones)
- Quick to implement, does not require specific equipment
- No water tightness
- Colourless solution used irrespective of the material colour
- Excellent finishing quality: prevents all visible joint line traces
- 1 package = 1 metal container of 500ml cold weld (SG-916) + 2 nozzles + 1 applicator bottle + 3 protective rolls



Harlequin Accessories - Ballet barres & Brackets



Harlequin ballet barres & brackets
SKU: 805-31520-X

Ballet barres and brackets

Fixed or portable, Harlequin ballet barres adapt perfectly to your environment.

The Harlequin wall-mounted ballet barres are attached to the wall using rectangular brackets: four fixings for the single bracket and six fixings for the double bracket. The brackets have an anti-scratch black lacquer finish.

The brackets are supplied with the necessary screws and plugs and can be mounted at any height. The barres are attached at a distance of 135 mm from the wall.

- Easy mounting
- Single or double barres
- Invisible joins

The wooden ballet barres are 50 mm in diameter and 1.5 m in length. When equipping a complete studio or rehearsal space, lengths of barre are joined inside the bracket heads giving the impression of a continuous length of barre.



Features

- Application on all types of PVCs (except homogeneous ones)
- Quick to implement, does not require specific equipment
- No water tightness
- Colourless solution used irrespective of the material colour
- Excellent finishing quality: prevents all visible joint line traces
- 1 package = 1 metal container of 500ml cold weld (SG-916) + 2 nozzles + 1 applicator bottle + 3 protective rolls



Article Codes

SKU: 805-3152 04
Harlequin wall-mounted for single bracket

SKU: 805-3152 05
Harlequin wall-mounted for double bracket

SKU: 805-3152 06
Harlequin floor-mounted for single bracket, adjustable

SKU: 805-3152 07
Harlequin floor-mounted for double bracket

SKU: 805-3152 08
Harlequin Wooden Barre (beech) D: 4cm L: 2m



Portable ballet barres

These ballet barres are in Melis pine, 40 mm in diameter. The base and columns are in steel with a matt silver finish. The ballet barres can be moved easily thanks to the four rubber wheels fitted to the steel base. The ballet barres are designed for professional use.

Height: 82/102 cm – Length: 3 m
Excellent stability
Steel feet



Harlequin Accessories - Tape

Harlequin shiny black PVC tape for vinyl floors

SKU: 805-313108



Shiny black PVC floor tape, suitable for use with a black Harlequin Hi-Shine vinyl floor.

Features

- Roll width: 50mm

Harlequin single-sided PVC tape for vinyl floors

SKU: 805-31520-X



Single-sided PVC floor tape, for use when taping down a Harlequin vinyl floor.

Features

- Roll width: 50mm
- Roll length: 33mm
- Roll weight: 320g

Colours available:

- Black
- Clear/Opaque
- Super clear

Harlequin double-sided tape for vinyl floors

SKU: 805-313-XXX



Double-sided, high tack/low tack floor tape, used when taping the underside of a Harlequin vinyl floor to a sub-floor.

Features

- Roll width: 50mm
- Roll length: 33mm
- Roll weight: 720g

SKU: 805-313109

Harlequin double-sided tape (Low-tack) 50mm x 50m

SKU: 805-313110

Harlequin double-sided tape (Semi-permanent) 50mm x 50m



Harlequin cloth tape for vinyl floors

SKU: 805-3131-XX

Single sided, cloth gaffer dance floor tape, in a wide range of colours to match your Harlequin vinyl dance floor.

Colours available:

- Black
- White
- Grey
- Light grey
- Dark grey
- Blue
- Red
- Fog
- Tan
- Green
- Yellow
- Hazelnut
- Beige

SKU: 805-313104

Harlequin Cloth tape (Duo) 50mm x 50m

SKU: 805-313105

Harlequin Cloth tape (Studio) 50mm x 50m

SKU: 805-313106

Harlequin Cloth tape (Cascade) 50mm x 50m

SKU: 805-313107

Harlequin Cloth tape (Allegro) 50mm x 50m



Harlequin Accessories - Maintenance



Harlequin vinyl floor cleaner

SKU: 805-314004

Initially, all new Harlequin vinyl dance floors should be cleaned with Harlequin vinyl dance floor cleaner, which is a highly effective hard surface cleaner that removes marks caused by residue/film present after the manufacturing process or by the fitting process.

If you DO NOT wish to dress your floor then Harlequin vinyl dance floor cleaner can be used as your routine general cleaner. How often you clean your floor will depend upon the level of soil.

A 1 litre container should provide coverage for approximately 100m² of vinyl flooring when diluted.

A 5 litre container should provide coverage for approximately 500m² of vinyl flooring when diluted.

Features

SKU: 805-314004

Harlequin Cleaner 5 l (shoe mark remover)

SKU: 805-314005

Harlequin Spray* 1000 ml (glue/tape remover)



Harlequin vinyl floor dressing

SKU: 805-314003

Harlequin vinyl dance floor dressing is an acrylic emulsion dressing that provides a long-lasting, tough protective coating for your Harlequin vinyl floor. It is intended for use in conjunction with Harlequin vinyl dance floor maintainer.

A 5 litre container should provide coverage for approximately 250m² of vinyl flooring.

PLEASE NOTE: Harlequin vinyl dance floor dressing is NOT suitable for use with Harlequin Fiesta, Harlequin Hi-Shine or Harlequin Showfloor. Please use Harlequin vinyl dance floor cleaner in these instances.

Features

Volume: 5 litre



Harlequin vinyl floor dressing remover

SKU: 805-314002

Harlequin vinyl dance floor dressing remover is a concentrated and efficient cleaner, designed to cut through and remove emulsion build-up, before new coatings of Harlequin vinyl dance floor dressing and Harlequin vinyl dance floor maintainer are applied.

If the Harlequin vinyl dance floor dressing is applied before the vinyl is dry, or if residue from the Harlequin vinyl dance floor dressing remover is still present, the Harlequin vinyl dance floor dressing will appear patchy and white.

A 5 litre container should provide coverage for approximately 100m² to 150m² of vinyl flooring when diluted.

PLEASE NOTE: Harlequin vinyl dance floor dressing remover is NOT suitable for use with Harlequin Fiesta, Harlequin Hi-Shine or Harlequin Showfloor. Please use Harlequin vinyl dance floor cleaner in these instances.

PLEASE NOTE: It is recommended that Harlequin vinyl dance floor dressing remover only be used when removing the build-up of Harlequin vinyl dance floor dressing and Harlequin vinyl dance floor Maintainer, although we have found that it can be used effectively



Harlequin vinyl floor maintainer

SKU: 805-314002

Harlequin vinyl dance floor maintainer is an antibacterial cleanser, which leaves behind a protective coating to keep the floor looking good for longer. It increases scuff resistance and maintains the layers of Harlequin vinyl dance floor dressing.

A 5 litre container should provide coverage for approximately 200m² of vinyl flooring when diluted.

PLEASE NOTE: Harlequin vinyl dance floor maintainer is NOT suitable for use with Harlequin Fiesta, Harlequin Hi-Shine or Harlequin Showfloor. Please use Harlequin vinyl dance floor cleaner in these instances. as a separate deep cleaner to clean EXTREMELY dirty floors. All residue of Harlequin vinyl dance floor dressing remover must be thoroughly rinsed and removed to avoid possible damage/burning of the vinyl.

Features

Volume: 5 litre



Harlequin Accessories - Storage



Harlequin sprung panel storage cart

SKU: 805-315105

Flexible storage cart for Harlequin sprung panels

The Harlequin A-frame panel storage cart allows for safe storage and easy handling of Harlequin Liberty sprung floor panels, edge trims and ramps. Carts are very fast to load and unload and easy to manoeuvre with non-marking braked wheels.

- Stores up to 22 full size (2m x 1m) Harlequin Liberty sprung floor panels.
- Constructed from black scratch-resistant, powder-coated steel.
- Fitted with four heavy-duty swivel castors with brakes and non-marking polyamide wheels.
- Forklift pockets for side lifting.
- Width: 1,28m



Harlequin sprung panel storage cart

SKU: 805-31510-X

The storage cart is recommended for use if you wish to store or move larger, heavier rolls of flooring.

- For storage of 4 to 6 rolls of flooring.
- 1,5m or 2 m wide versions.
- Constructed from black scratch-resistant, powder-coated steel.
- Two handles are supplied with each cart to assist with loading and unloading and, when not in use, these locate on the end sections to help manoeuvre the cart itself.
- The heavy gauge poles which support the rolls of flooring have special end fittings to locate them securely on the cart and a centre support to prevent bowing of the rolls.
- The carts are fitted with four heavy-duty swivel castors; with brakes and non-marking polyamide wheels.

SKU: 805-315101
Harlequin Storage Cart (vinyl) 4 rolls/1,5m wide

SKU: 805-315102
Harlequin Storage Cart (vinyl) 4 rolls/2m wide

SKU: 805-315103
Harlequin Storage Cart (vinyl) 6 rolls/1,5m wide

SKU: 805-315104
Harlequin Storage Cart (vinyl) 6 rolls/2m wide



Harlequin vinyl floor roll straps

Harlequin vinyl floor roll straps are manufactured from heavy duty black webbing, with a secure Velcro® fastening. They come in sizes A to G and are recommended for use when securing rolls of Harlequin vinyl floors that are rolled onto their cardboard cores and then moved or stored. We recommend to use 2 straps for rolls of 1.5m wide and 3 straps for rolls of 2m wide.

- Strap A fits 10m rolls of Harlequin Duo
- Strap B fits 10m and 15m rolls of Harlequin Cascade, 15m, 20m and 25m rolls of Harlequin Duo and 10m rolls of Harlequin Studio
- Strap C fits 15m rolls of Harlequin Studio and 20m and 25m rolls of Harlequin Cascade
- Strap D fits 20m and 25m rolls of Harlequin Studio
- Strap E fits 10m rolls of Harlequin Allegro
- Strap F fits 15m and 18m rolls of Harlequin Allegro
- Strap G fits 20m and 25m rolls of Harlequin Allegro

SKU: 805-3152 01
Harlequin 2 straps for vinyl rolls of 1,5m

SKU: 805-3152 02
Harlequin 3 straps for vinyl rolls of 2m



Harlequin vinyl floor storage bag

SKU: 805-3151-X

Ideal for touring, our vinyl floor storage bags are made from durable polyester fabric with waterproof backing and come complete with heavy duty nylon webbing cradle straps for portability. Recommended for the protection of Harlequin vinyl floors during transit, for ease of handling in touring situations or when storing your Harlequin vinyl floor.

- Short size: for 1,5m wide rolls
- Long size: for 2m wide rolls

SKU: 805-315106
Harlequin Roll Storage Bag (Cascade) w=2m max 25m

SKU: 805-315107
Harlequin Roll Storage Bag (Duo) w=2m max 30m

SKU: 805-315108
Harlequin Roll Storage Bag (Studio) w=1,5m max 18m

SKU: 805-315109
Harlequin Roll Storage Bag (Duo) w=1,5m max 30m

SKU: 805-315110
Harlequin Roll Storage Bag (Studio) w=1,5m max 25m

SKU: 805-315111
Harlequin Roll Storage Bag (Allegro) w=1,5m max 10m

SALES OFFICE & WORKSHOP
MALMGATAN 18
SE-602 23 NORRKÖPING
+46 10 211 50 50

SALES OFFICE
SKVADRONSGATAN 6A
SE-217 52 MALMÖ
+46 72 164 00 22

PROFESSIONAL
STAGE ENGINEERING



www.psrig.com



info@psrig.com



[/psrigswe](https://www.facebook.com/psrigswe)



[/company/psrig](https://www.linkedin.com/company/psrig)



PSRIG