

ERSATZTEILE | STROMLAUFPLÄNE

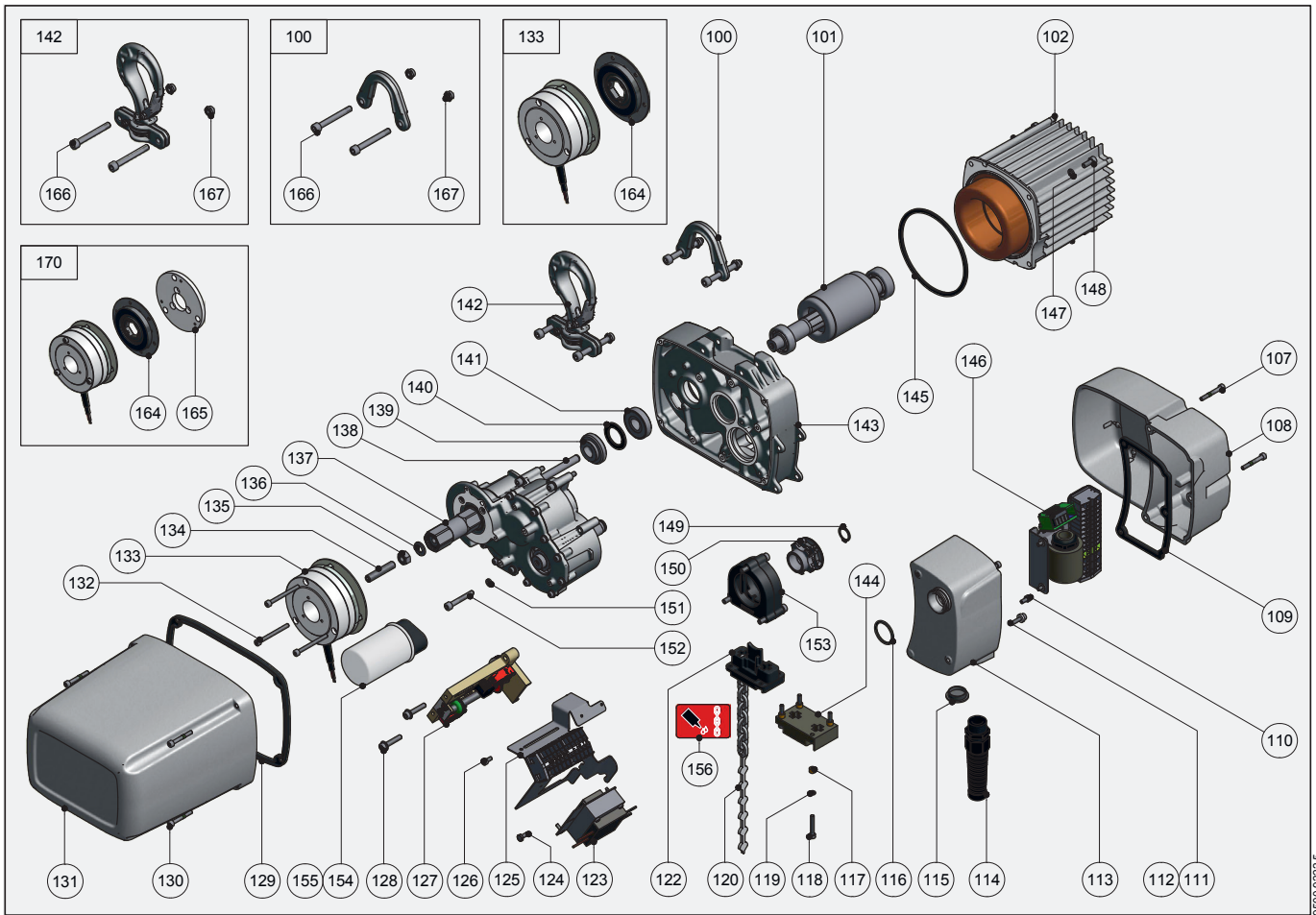
LPM 250



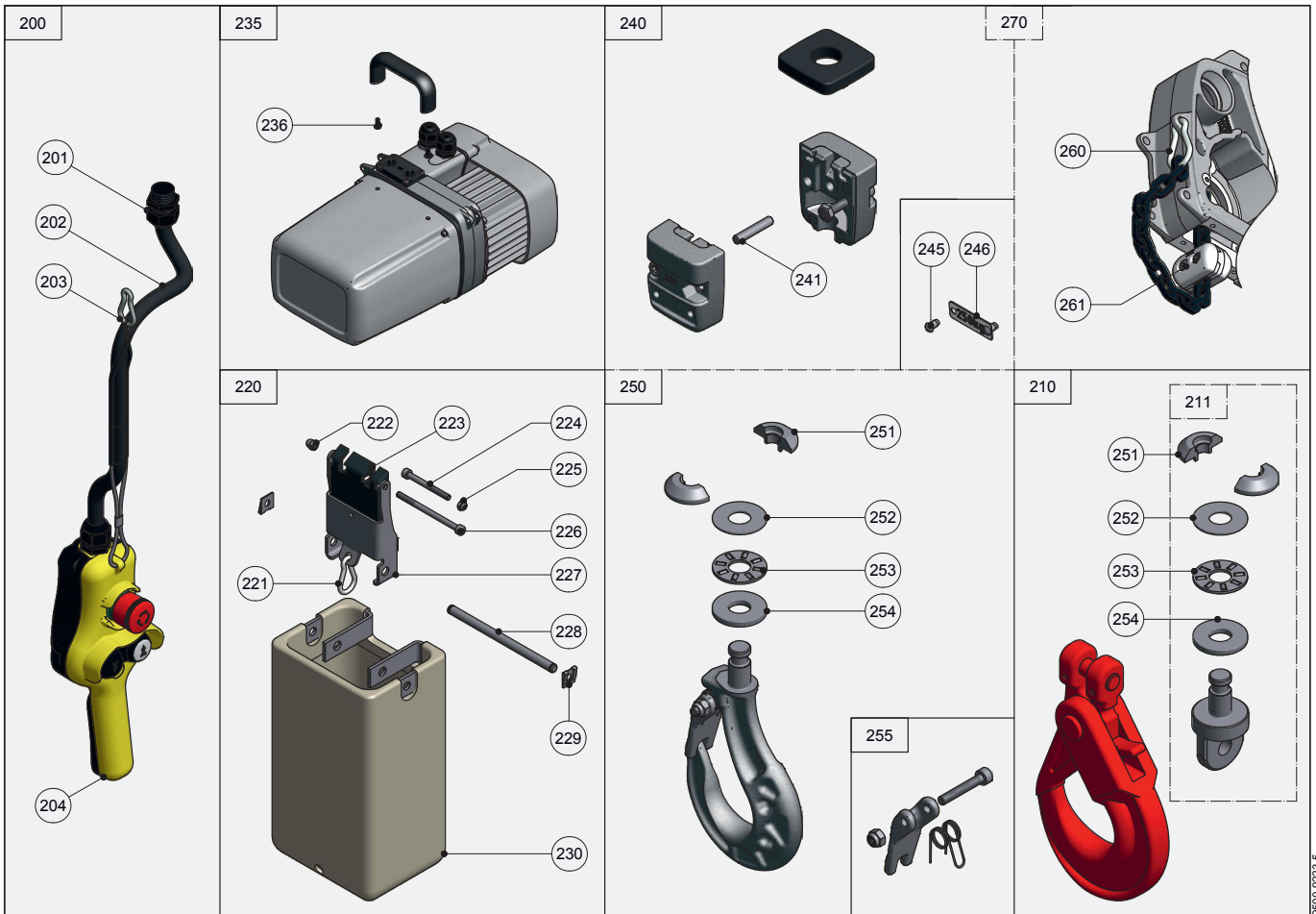
Spare parts | Pièces de rechange | Onderdelen | Reservedele | Varaosat |
Pezzi di ricambio | Reservedelen | Peças | Reservdelar | Piezas de recambio

Circuit diagrams | Schéma de connexions | Stroomschema | Kredslobsdiagrammer |
Kytentäkaavio | Aansluitschema | Schema elettrico | Koplingskjema |
Esquema electrico | Elschema | Esquema eléctrico





9500.922.5



9500.922.5

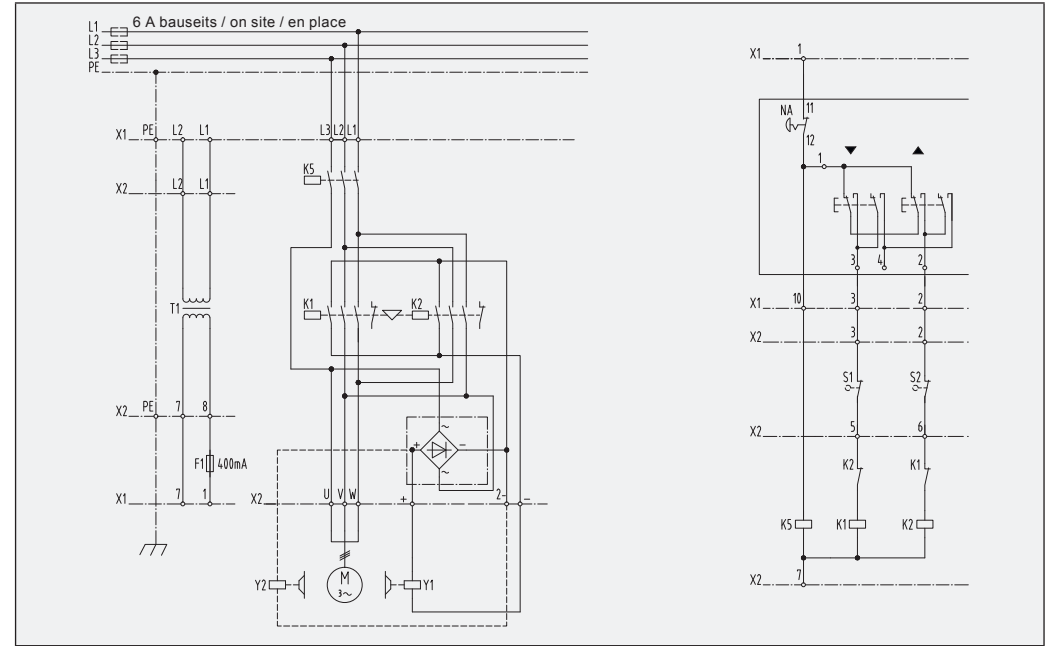
		LPM 250
100*	84 x 59	9500.3079.3
101	1t, L = 60	9500.3170.3
102	4p, 3 x 230/400V 50Hz	9502.0150.3
	4p, 3 x 208-230/460V 60Hz	9502.0160.3
	4p, 1 x 115V 50Hz	9502.0158.3
	4p, 1 x 230V 50Hz	9502.0150.3
	4p, 1 x 115V 60Hz	9502.0159.3
	4p, 1 x 230V 60Hz	9502.0153.3
107	M4 x 30	9030.0329
108	192 x 139 x 64	9500.3018.2
109*	136 x 78 x 4	9500.3033.3
110	M4 x 8	9030.0325
111	M4 x 16	9030.0253
112	M4	9040.2512
113	78 x 81 x 135	9500.3074.3
114	M20 x 1.5 x 101.5	9055.3124
115	M20 x 1.5	9055.3512
116	ø23.6 x ø2.65	9035.0031
117*	ø6.9/1.45 x 4.5	9058.0700
118	M4 x 25 VZ	9030.0256
119	M4	9031.3901
120	140 x 12 x 3 (3.75 mm)	9041.6034
121*	3.75 x 10.75	9039.0028
122*	60 x 36 x 42	9500.3008.3
123	230/42V	9056.4606.4
	400/42V	9056.4601.4
	460/42V	9056.4626.4
	208/42V	9056.4621.4
124	M4 x 10	9030.5250
125	1t, max. 480V	9502.1203.3
	DC	9502.1201.3
	1t, 1Ph	9502.1202.3
126	M4 x 8	9030.0325
127	103 x 84 x 41	9500.3069.3
	103 x 84 x 41 + NA	9500.3071.3
128	M5 x 25	9030.3259
129*	188 x 134 x 6	9500.3034.3
130	M4 x 30	9030.0329
131	189 x 186 x 133, GIS	9500.3150.2
	189 x 186 x 133	9500.3151.2
132	M4 x 45	0030.9287
133	3Nm, 100-125VAC 50/60Hz	9050.4082
	3Nm, 200-240VAC 50/60Hz	9050.4083
	3Nm, 360-420VAC 50/60Hz	9050.4084
	3Nm, 440-480VAC 50/60Hz	9050.4085
	3Nm, 200-240VAC 50/60Hz	9050.4083
134	M8 x 40	9030.2018
135	M8	0031.0008
136	ø8.4/ø16 x 1.6	0031.0578
137	165 x 200 x 120, -N	9500.3031.3
138	ø8 x 60	9031.5861
139*	ø35 x 11	9500.3048.4
140*	ø32/ø22 x 2	9500.3046.4
141*	ø35 x 13	9500.3047.4
142*	84 x 177	9500.3080.3
143	205 x 42 x 151	9500.3000.0
144	60 x 36 x 12	9500.3119.4
145	ø105/ø97 x 2.5	9500.3054.4
146	90 x 105 x 29.5, PMS	9502.1206.3
	90 x 105 x 29.5	9502.1205.3
	1t, 42V	9512.1007.2
	1t, 110V	9512.1004.2
	1t+NA, 42V	9512.1000.2
	1t+NA, 115V, 1Ph	9502.1055.2
	1t+NA, 230V, 1Ph	9502.1056.2
147	M5	9031.3902
148	M5 x 16	9030.0262
149	14 x 1	0031.1008
150*	ø39 x 27	9500.3030.3
151	M5	9031.3902
152	M5 x 35/22	9030.0267
153*	66 x 31 x 88	9500.3078.3
154	220µF, 1Ph 115V 50Hz	9059.0022
	50µF, 1Ph 230V 50Hz	9059.0021
	275µF, 1Ph 115V 60Hz	9059.0020
	60µF, 1Ph 230V 60Hz	9059.0023
155	4.5 x 360	0055.0818
156	0.25 l	9041.0007
164	ø84 x 9	9400.3156.4
165	ø85 x 6	9400.3154.4
166	M6 x 50	9500.3139.4
167	M6	9031.1276
170*	3Nm, 360-420VAC 50/60Hz	9500.3127.4
	3Nm, 200-240VAC 50/60Hz	9500.3126.4

		LPM 250
200*	2K NA 3 m	9290.1086.3
	2K NA 4 m	9290.1087.3
	2K NA 5 m	9290.1088.3
	2K NA 6 m	9290.1089.3
	2K NA 7 m	9290.2014.3
	2K NA 8 m	9290.1090.3
	2K NA 10 m	9290.1091.3
	2K NA 12 m	9290.1092.3
	2K NA 15 m	9290.1093.3
	2K NA 20 m	9290.1094.3
201*	M20 x 1.5	9055.3102
202*	5 x 0.75 mm ² , L =	9055.0110
203	ø4 x 40	9031.8007
204*	2K NA	9290.2000.3
210*	153 x 75 x 27	9500.3088.4
211*	ø25 x 49	9500.3089.4
220	100 x 126 x 230, 12 m	9500.3081.3
	100 x 126 x 350, 24 m	9500.3082.3
	100 x 126 x 800, 48 m	9500.3140.3
221	ø4 x 40	9031.8007
222	M5	9031.1051
223	60 x 30 x 91	9500.3015.3
224	M5 x 50	9030.0270
225	M5	9031.1275
226	M5 x 75	9030.0327
227	110 x 31 x 22	9500.3040.3
228	ø8 x 127	9500.3086.4
229	9 x 10 x 3	9031.2401
235*	108 x 50 x 24	9500.3148.2
236*	M5 x 12	9030.0021
240*	35 x 35 x 41	9500.3076.3
241*	ø4 x 22	9500.3134.4
245	ø3 x 5	9031.6604
246	250 kg	9210.3721.4
	200 kg	9210.3720.4
250*	115 x 68 x 29	9500.3060.3
251	ø23 x 8	9500.3064.4
252*	ø10/ø24 x 1	9038.1757
253*	ø10/ø24 x 2	9038.0262
254*	ø10/ø24 x 2.75	9038.1756
255*	41 x 18	9500.3095.4
260	ø4 x 40	9031.8007
261	22 x 36	9500.3013.3
270	1-fall	9500.3077.3

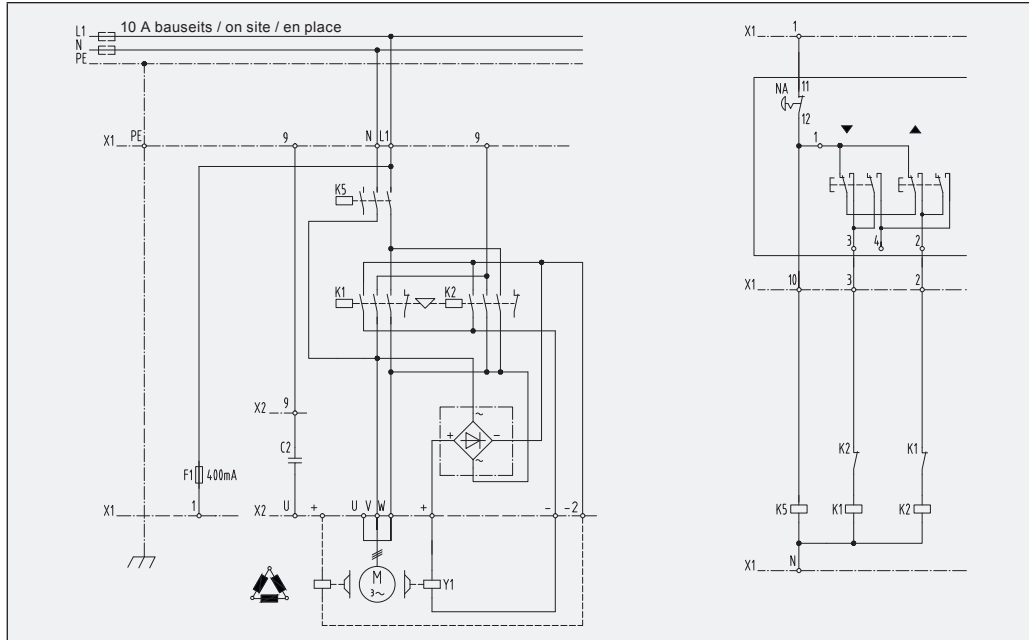
Schützensteuerung Contactor control Commande par contacteurs	1 Geschwindigkeit mit Not-Aus 1 speed with emergency stop 1 vitesse avec marche-arrêt	9500.9502.4 / 3 Ph
	1 Geschwindigkeit mit Not-Aus 1 speed with emergency stop 1 vitesse avec marche-arrêt	9500.9508.4 / 1 Ph
ohne Schützensteuerung without contactor control sans commande par contacteurs	1 Geschwindigkeit mit 2. Bremse 1 speed with 2nd brake 1 vitesse avec 2ème frein	9500.9512.4 / 3 Ph

F	Steuersicherung	Control fuse	Fusible de commande
K	Schütz	Contactor	Contacteur
L	Zuleitung	Power supply	Alimentation électrique
N	Nullleiter	Neutral	Neutre
NA	Not-Aus	Emergency stop	Marche-arrêt
PE	Erdung	Earth	Mise à la terre
S	Schalter	Switch	Interrupteur
T	Transformator	Transformer	Transformateur
U, V, W	Motor	Motor	Moteur
X	Klemmenleiste	Terminal strip	Bornier de raccordement
Y	Bremse	Brake	Frein

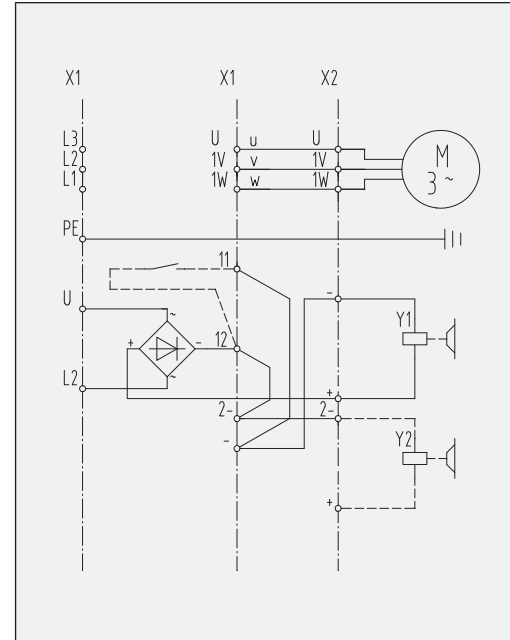
9500.9502.4 / 3 Ph



9500.9508.4 / 1 Ph



9500.9512.4 / 3 Ph



9500.9505.4 / 3 Ph / PMS

