

# ERSATZTEILE | STROMLAUFPLÄNE

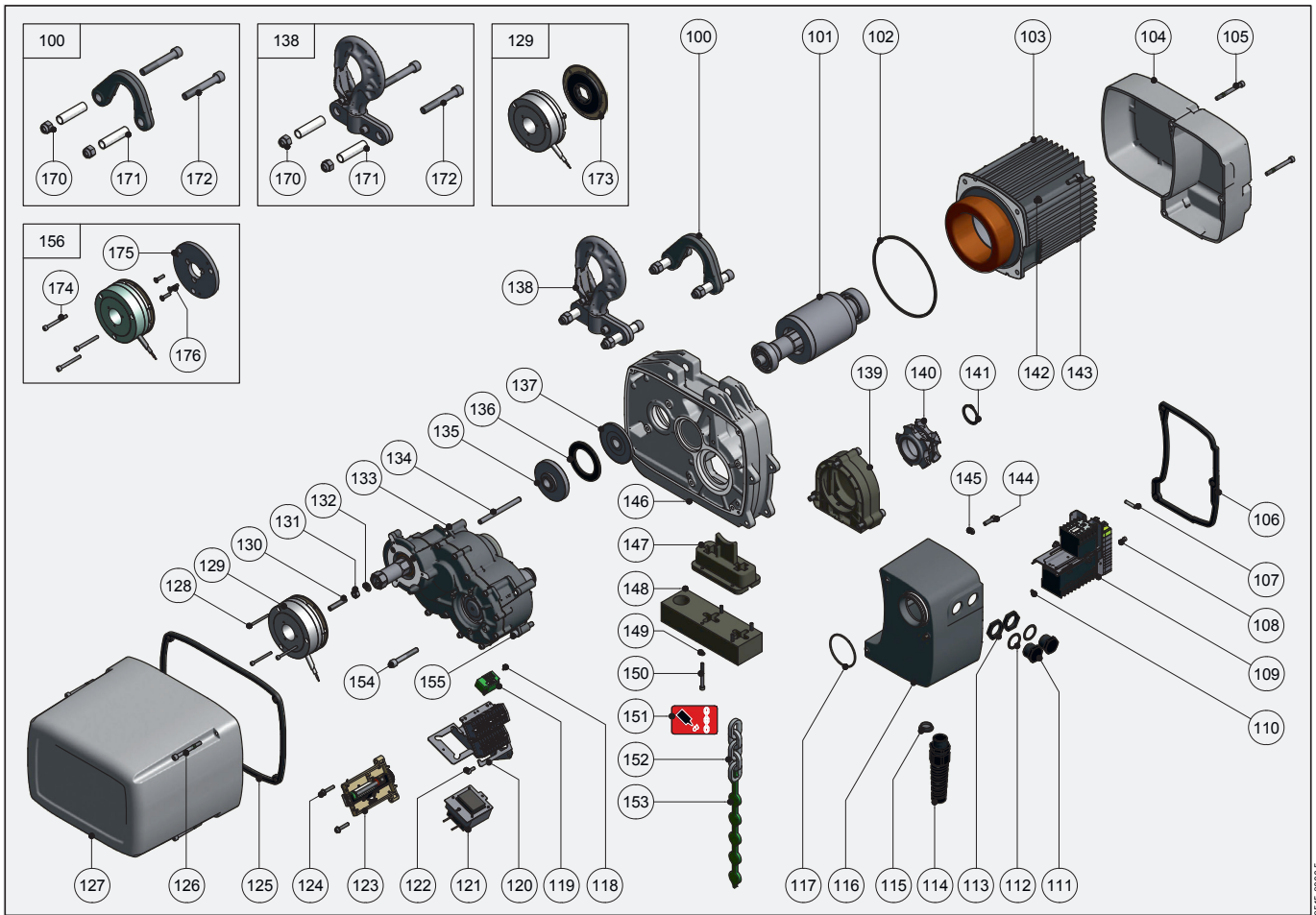
## LP 1000



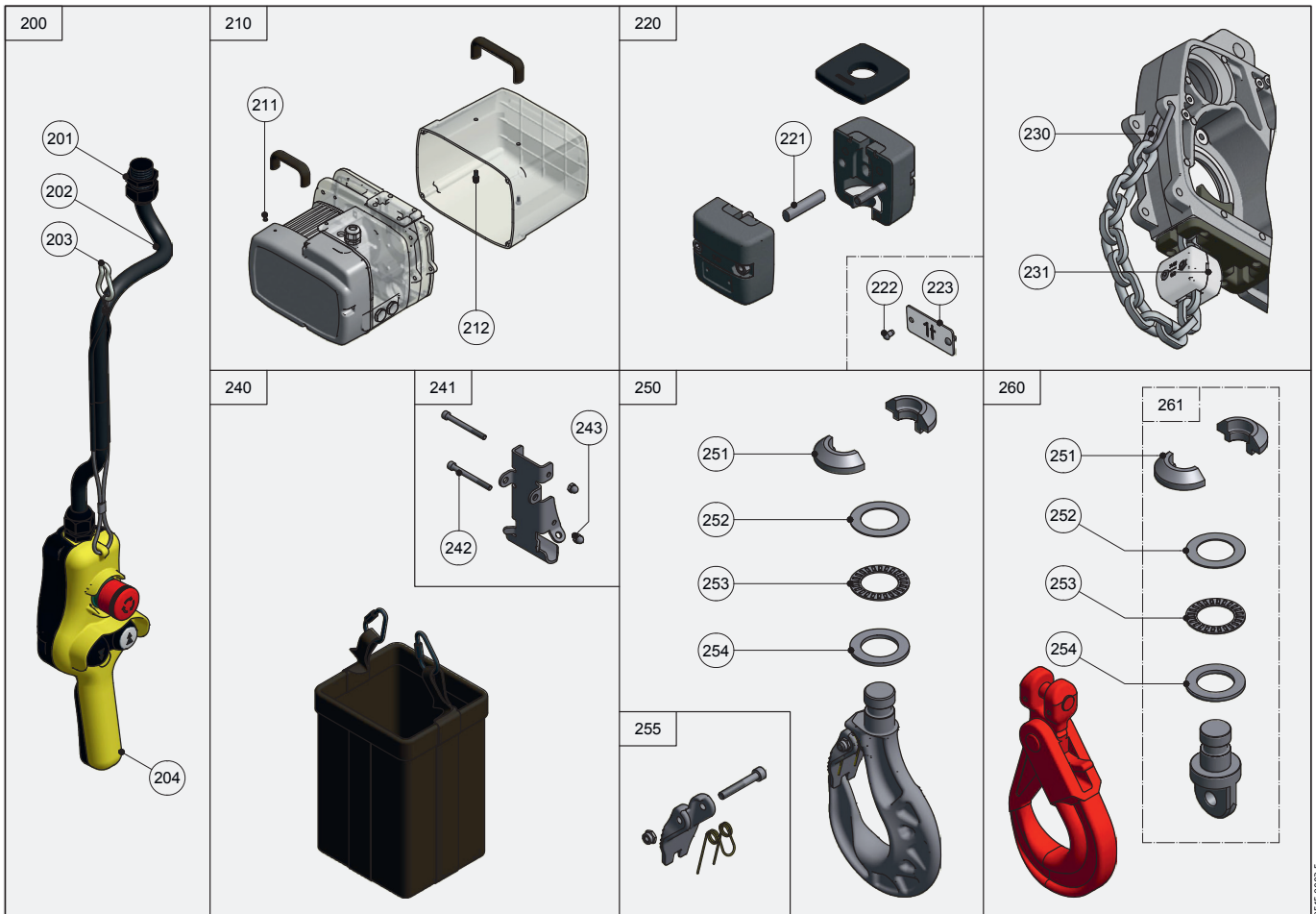
Spare parts | Pièces de rechange | Onderdelen | Reservedele | Varaosat |  
Pezzi di ricambio | Reservedelen | Peças | Reservdelar | Piezas de recambio

Circuit diagrams | Schéma de connexions | Stroomschema | Kredslobsdiagrammer |  
Kytentäkaavio | Aansluitschema | Schema elettrico | Koplingskjema |  
Esquema electrico | Elschema | Esquema eléctrico





9515.9272.5



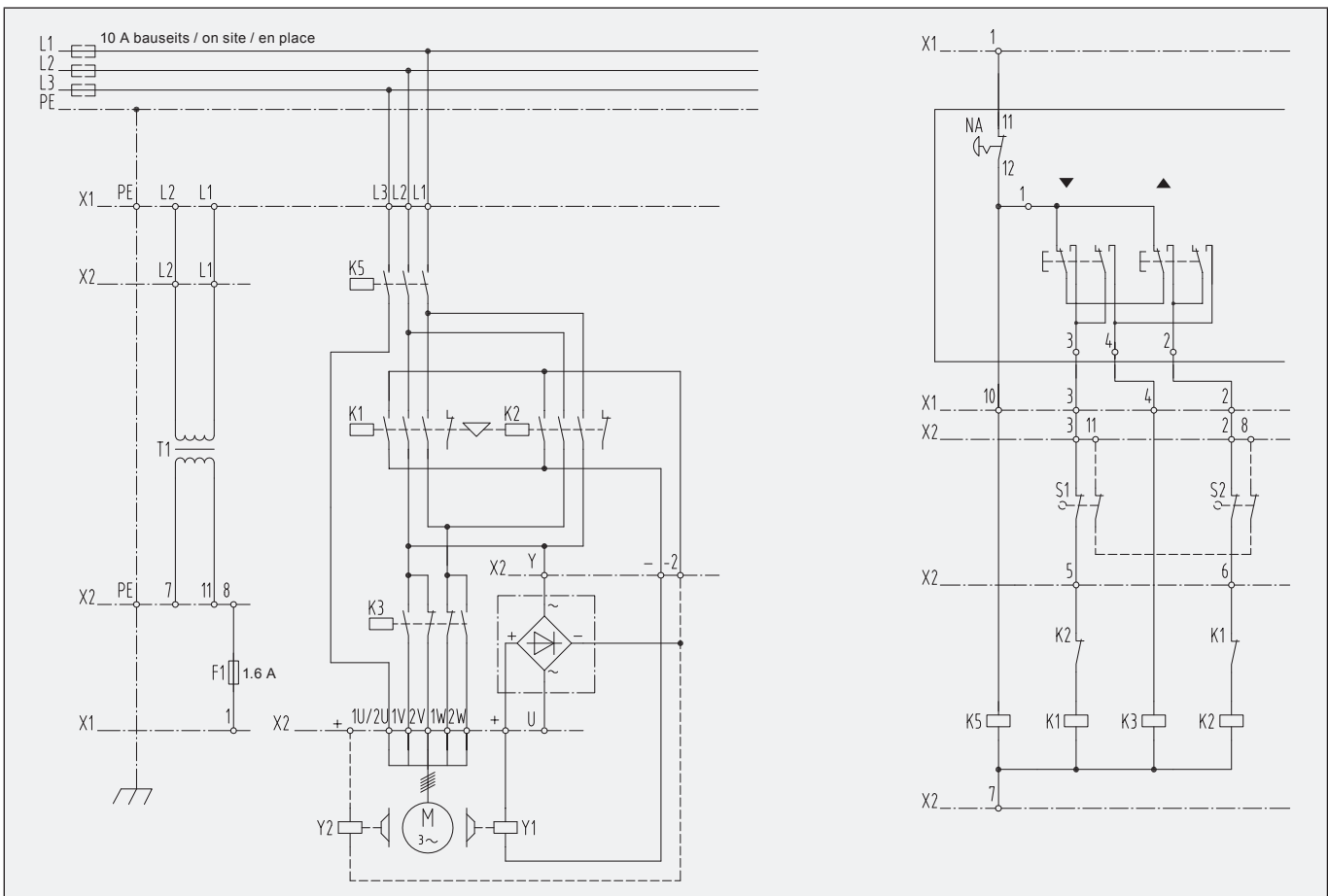
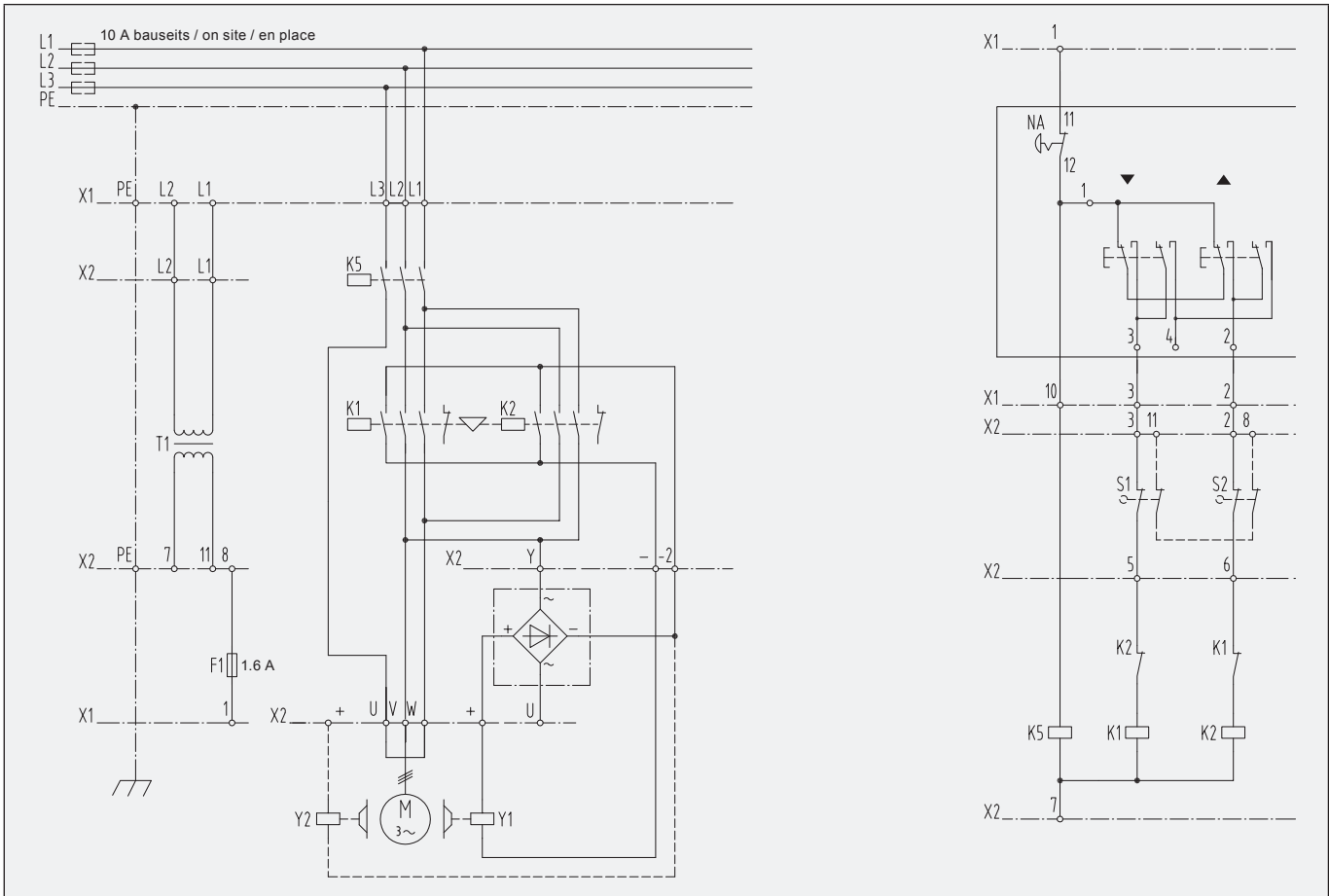
9515.9273.5

		LP 1000
100*	141 x 96	9515.3077.3
101	1t, L=90, -NL	9515.3106.3
	2t, L=120, -N/-NF	9515.3107.3
102	ø156 / ø149 x 2.5	9515.3054.4
103	4p 3 x 230/400V 50Hz	9517.0150.3
	4p 3 x 460V 60Hz	9517.0150.3
	2p 3 x 230/400V 50Hz	9517.0250.3
	2p 3 x 460V 60Hz	9517.0250.3
	2/8p 3 x 400V 50Hz	9517.0350.3
	2/8p 3 x 230V 50Hz	9517.0351.3
	2/8p 3 x 460V 60Hz	9517.0350.3
104	217 x 108 x 310	9515.3007.2
105	M6 x 60/24 N	9030.0339
106*	143 x 219 x 6	9515.3033.3
107	1.6A UL	9052.0012
108	M4 x 8	9030.0325
109	90 x 105 x 92.5, PMS	9517.1206.3
	90 x 105 x 92.5	9517.1205.3
	1t, 42V	9517.1006.2
	1t, 110V	9517.1004.2
	1t+NA, 42V	9517.1000.2
	2t+NA, 42V	9517.1100.2
110	ø4.3 / ø8 x 0.8	9031.3706
111	M25 x 1.5	9055.3517
112	ø29.5 / ø23.2 x 1	9040.2511
113	M25 x 1.5	9055.4013
114	M25 x 1.5 x 131	9055.3127
115	M20 x 1.5	9055.3512
116	141 x 217 x 134	9515.3006.3
117	ø59 x 2.5 NBR 70	9035.0034
118	M3 x 8	9030.8030
119	PMEA 500	9050.4023
120	1t, 2t, max. 480V	9512.1200.3
	DC	9512.1201.3
	1t, 2t, 500-690V	9512.1202.3
121	400/42V 50/60Hz	9056.4701.4
	230/42V 50/60Hz	9056.4741.4
	460/42V 50/60 Hz	9056.4741.4
122	M5 x 10	9030.0027
123	103 x 84 x 41	9500.3069.3
	103 x 84 x 41 + NA	9500.3071.3
124	M5 x 25	9030.0022
125*	305 x 212 x 6	9515.3034.3
126	M6 x 60/24 N	9030.0339
127	303 x 251 x 210	9515.3085.3
128	M5 x 50/22	9030.0270
129	12Nm, 100-125VAC 50/60Hz	9050.4100
	12Nm, 200-240VAC 50/60Hz	9050.4101
	12Nm, 360-420VAC 50/60Hz	9050.4102
	12Nm, 440-480VAC 50/60Hz	9050.4103
130	M8 x 40	9030.2018
131	M8	0031.0008
132	ø8.4 / ø16 x 1.6	0031.0578
133	258 x 176 x 254 N	9515.3020.2
134	ø8 x 100	9031.5863
135*	ø76 x 18	9515.3062.3
136*	ø75 / ø51 x 4	9515.3061.4
137*	ø77 x 9	9515.3063.3
138*	185 x 140 x 92	9515.3078.3
139*	136 x 63 x 133	9515.3123.4
140*	ø82 x 41.5	9515.3030.2
141	DIN 471, 32 x 1.5	9031.2017
142	M8	9031.3904
143	M8 x 20	9030.0286
144	M6 x 20	0030.9230
145	ø10.5 / ø6.5 x 3	9040.2508
146	256 x 65 x 327	9515.3000.0
147*	120 x 60 x 72	9515.3008.2
148*	191 x 60 x 40	9515.3074.3
149	M5	9031.3902
150	M5 x 50/22	9030.0270
151	0.25 l	9041.0007
152*	7.45 x 23	9039.0030
153	252 x 24.5 x 6 (7.45)	9041.6036
154	M8 x 55/28 T	9030.0343
155	M8 x 40/28 T	9030.0344
156	12Nm, 100-125VAC 50/60Hz	9515.3127.4
	12Nm, 200-240VAC 50/60Hz	9515.3128.4
	12Nm, 360-420VAC 50/60Hz	9515.3129.4
	12Nm, 440-480VAC 50/60Hz	9515.3130.4
170	M12	9031.1225
171	ø16 / ø13 x 60	9405.3094.4
172	M12 x 80/36	9030.0340
173*	ø104.5 x 9.5	9515.3113.4
174	M5 x 50/22	9030.0270
175	ø105 x 8	9515.3070.4
176	M5 x 20	9030.1820

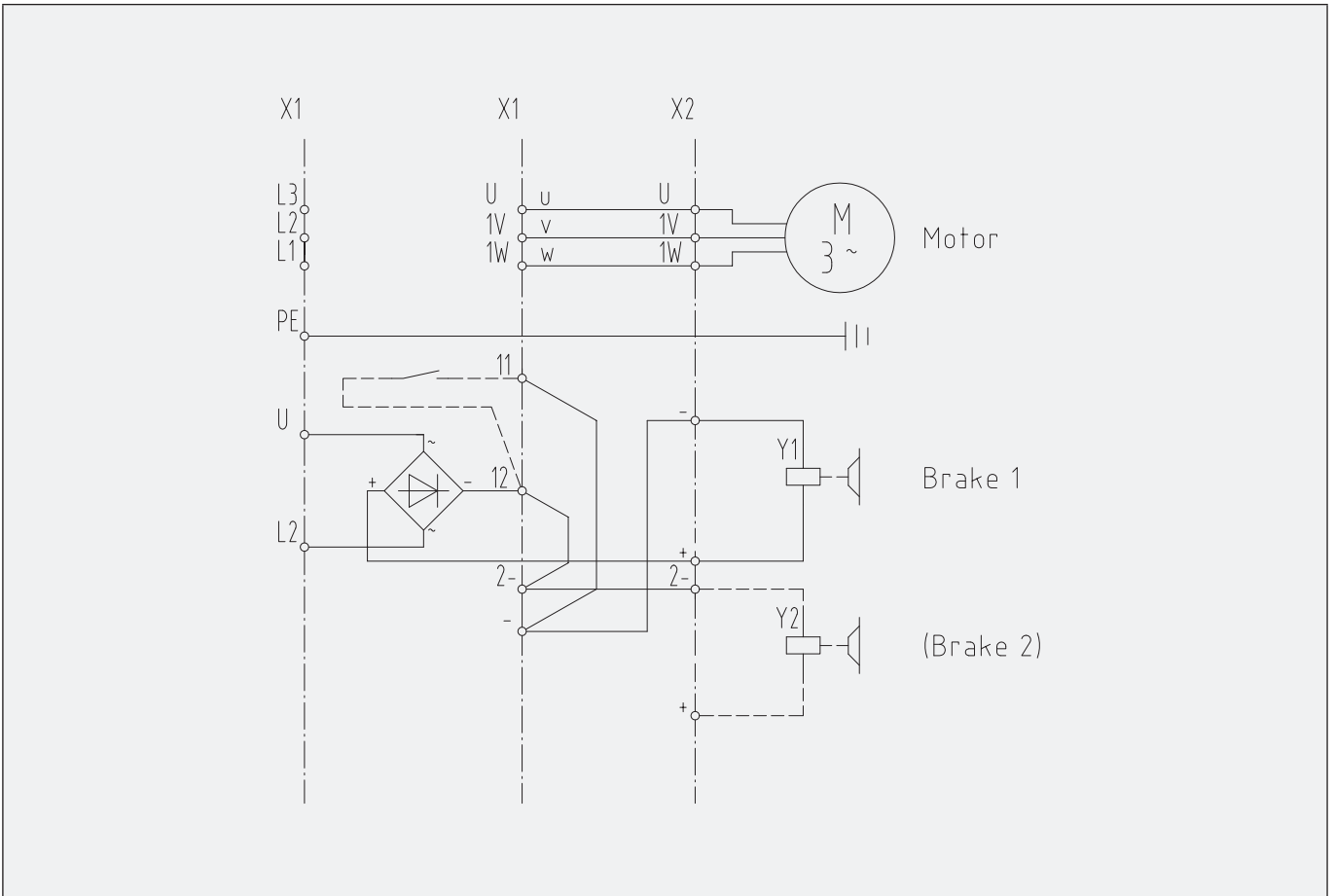
		LP 1000
200*	2K NA 3 m	9290.1086.3
	2K NA 4 m	9290.1087.3
	2K NA 5 m	9290.1088.3
	2K NA 6 m	9290.1089.3
	2K NA 7 m	9290.2014.3
	2K NA 8 m	9290.1090.3
	2K NA 10 m	9290.1091.3
	2K NA 12 m	9290.1092.3
	2K NA 15 m	9290.1093.3
	2K NA 20 m	9290.1094.3
201*	M20 x 1.5	9055.3102
202*	5 x 0.75 mm <sup>2</sup>	9055.0110
203	ø5 x 50	9031.8004
204*	2K NA	9290.2000.3
210*	148 x 53 x 26	9515.3131.3
211	M5 x 12	9030.0021
212	M8 x 16	9030.0323
220*	80 x 80 x 90	9515.3095.3
221*	8.5 x 12 x 49	9515.3072.4
222	ø3 x 5	9031.6604
223	0.4 t	9220.3470.4
	0.5 t	9220.3471.4
	0.63 t	9220.3472.4
	0.8 t	9220.3473.4
	1 t	9220.3474.4
	1.25 t	9220.3475.4
	1.6 t	9220.3476.4
230	ø5 x 62	9039.0409
231	55 x 46	9515.3013.3
240	192 x 212 x 320, XS, 1000/8	9515.3108.3
	192 x 212 x 420, S, 1000/10	9515.3109.3
	192 x 212 x 590, M, 1000/20	9515.3110.3
	192 x 212 x 880, L, 1000/33	9515.3111.3
	192 x 212 x 940, XL, 1000/36	9515.3112.3
241	193 x 139 x 63	9515.3098.2
242	M8 x 85/28	9030.0342
243	M8	9031.1052
250*	182 x 120 x 40	9515.3082.4
251	23.5 x 47 x 18	9225.3096.4
252*	ø47 x ø30 x 1	0038.3128
253*	DIN 5405-T2 AXK3047	9038.0252
254*	ø47 x ø30 x 3	9038.1750
255*	69 x 40	9515.3119.4
260*	247 x 109 x 47	9515.3118.4
261*	ø47 x 83	9515.3117.4



Schützensteuerung Contactor control Commande par contacteurs	1 Geschwindigkeit mit Not-Aus, 2. Bremse, 2+2 ES 1 speed with emergency stop, 2nd brake, 2+2 ES 1 vitesse avec marche-arrêt, 2ème frein, 2+2 ES	9510.9504.3 / 3 Ph	
	2 Geschwindigkeiten mit Not-Aus, 2. Bremse, 2+2 ES 2 speeds with emergency stop, 2nd brake, 2+2 ES 2 vitesses avec marche-arrêt, 2ème frein, 2+2 ES	9510.9505.3 / 3 Ph	
ohne Schützensteuerung without contactor control sans commande par contacteurs	1 Geschwindigkeit mit 2. Bremse 1 speed with 2nd brake 1 vitesse avec 2ème frein	9500.9512.4 / 3 Ph	
	1 Geschwindigkeit mit 2. Bremse, PMS 1 speed with 2nd brake, PMS 1 vitesse avec 2ème frein, PMS	9500.9505.4 / 3 Ph	
F	Steuersicherung	Control fuse	Fusible de commande
K	Schütz	Contactor	Contacteur
L	Zuleitung	Power supply	Alimentation électrique
N	Nullleiter	Neutral	Neutre
NA	Not-Aus	Emergency stop	Marche-arrêt
PE	Erdung	Earth	Mise à la terre
S	Schalter	Switch	Interrupteur
T	Transformator	Transformer	Transformateur
U, V, W	Motor	Motor	Moteur
X	Klemmenleiste	Terminal strip	Bornier de raccordement
Y	Bremse	Brake	Frein



9500.9512.4 / 3 Ph



9500.9505.4 / 3 Ph

