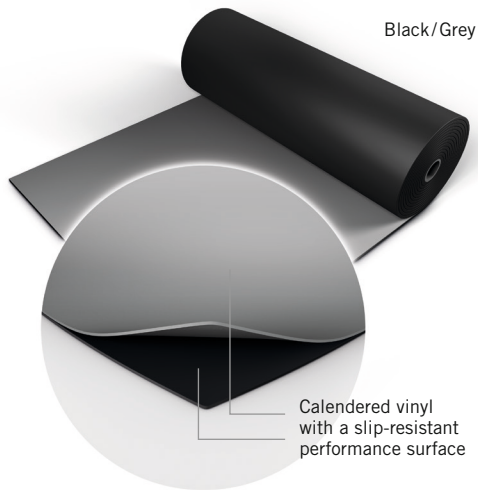


HARLEQUIN

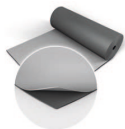
The world dances on Harlequin floors®



The history of Harlequin starts here with **Harlequin Duo** - the very first Harlequin dance floor. Original in both senses, first and innovative - Harlequin Duo is a slip-resistant, duo double-sided floor offering the option of two different surface colours.



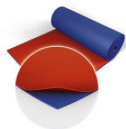
Dark grey/Light grey



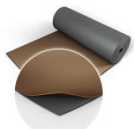
Black/White



Blue/Red



Fog/Tan



Hazelnut/Beige



Yellow/Green



Harlequin Duo™

Harlequin Duo is the original double-sided performance floor. It's a lightweight calendered vinyl that rolls out quickly, lays flat and stays flat. It's hard-wearing and slip-resistant on both sides, providing two floors in one.

Harlequin Duo is suitable for ballet, contemporary, percussive dance (including flamenco, Irish and tap), hip-hop, jazz, street, aerobics, zumba, concerts, display, exhibitions, television, theatres and for operatic performances.

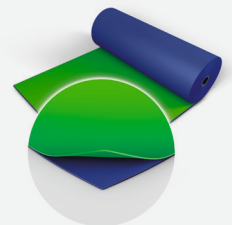
Harlequin Duo can be laid on to any hard, smooth surface and is particularly suited to touring due to its ease of handling and portability.

Specification guide

Permanent or Portable	Portable
Roll width	1,5 m (Black/White, Black/Grey), 2 m (All colours)
Roll length	10m, 15m, 20m, 25m, 30m
Colours	Black/Grey, Dark grey/Light grey, Black/White, Blue/Red, Fog/Tan, Hazelnut/Beige, Yellow/Green, Chroma key green/Chroma key blue, Black/Projection grey
Thickness	1,25mm
Weight	1,6kg/m ²
Dimensional stability	≤ 0,6%
Fire rating	Bfl-s1 (EN 13501-1)

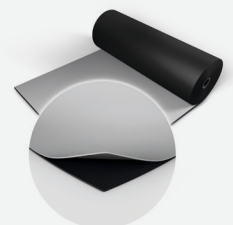
Harlequin's Chroma Key Duo vinyl is designed specifically for digital compositing with one side Chroma key green and the other Chroma key blue. As with all of Harlequin's Duo range, it is easy to roll out and store and is renowned for being hard wearing making it perfect for performance. Harlequin's Chroma key duo vinyl is a practical solution for filmmakers and television producers as both a floor and backdrop, it offers an alternative method to painting and repainting studio floors each time there is a Chroma key requirement for superimposing footage using editing packages.

Chroma key green/
Chroma key blue



Harlequin's Duo Black/Projection Grey vinyl absorbs ambient light and delivers a more vivid projection of images on to the vinyl surface. Contrast ratios are enhanced, ensuring less light bleed and less unwanted reflective light.

Black/Projection grey



As the leading product on the market for peak gain measurement, Harlequin's Projection grey provides higher brightness and a wider viewing angle for audiences, through front projection. This is a practical solution for film, TV and theatre production.

Harlequin Europe S.A
29, rue Notre-Dame
L-2240 Luxembourg
Tel. +352 46 44 99
Fax +352 46 44 40
Freephone: 00 800 90 69 1000
www.harlequinfloors.com
info@harlequinfloors.com

LONDON
LUXEMBOURG
BERLIN
PARIS
MADRID
LOS ANGELES
PHILADELPHIA
FORT WORTH
SYDNEY
HONG KONG
TOKYO

If you would like further information, advice and samples then please contact us.