

# Accessories

## 3-chip DLP® Projectors

DW Series

DS+ Series

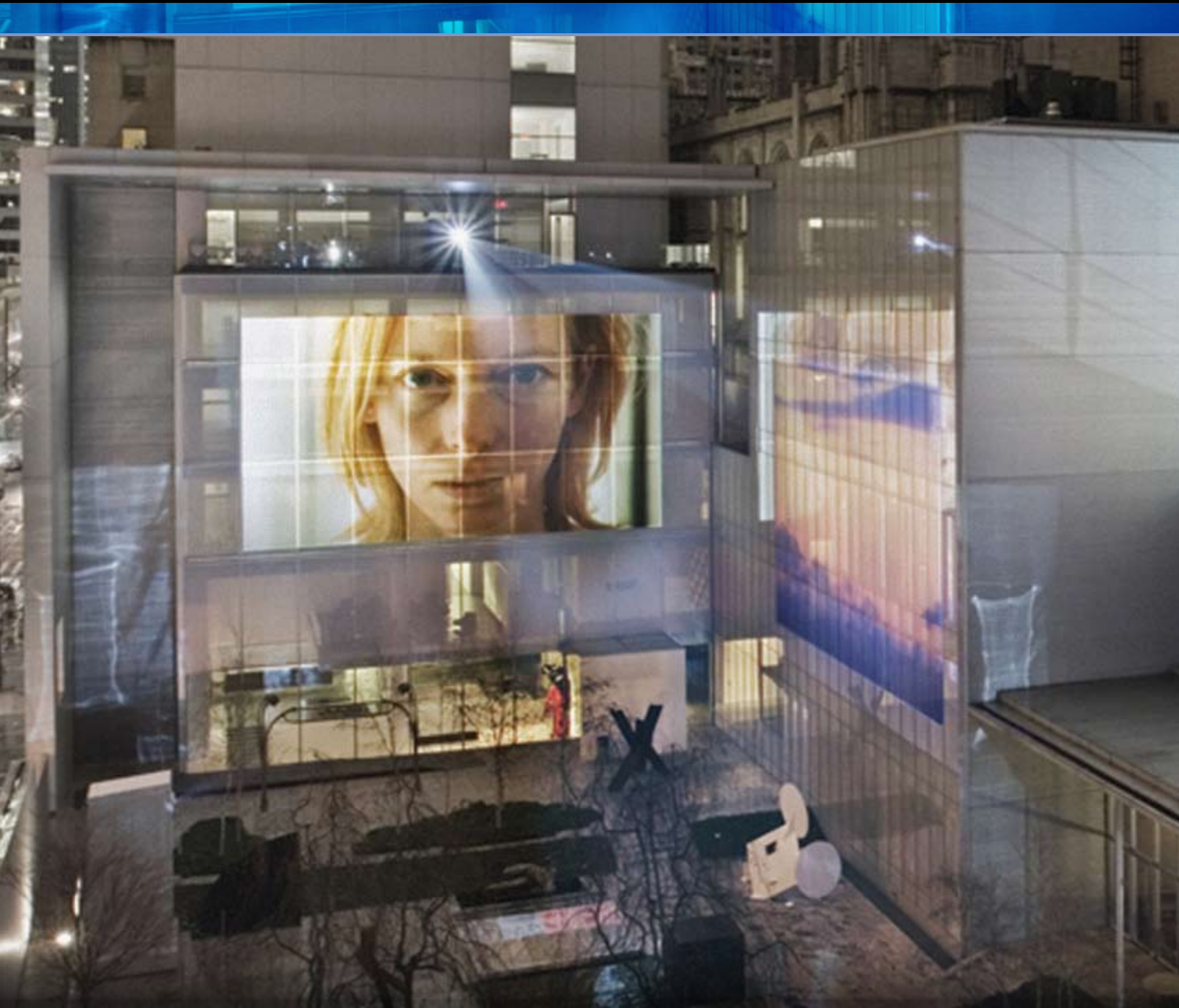
HD Series

Roadster Series

Roadie

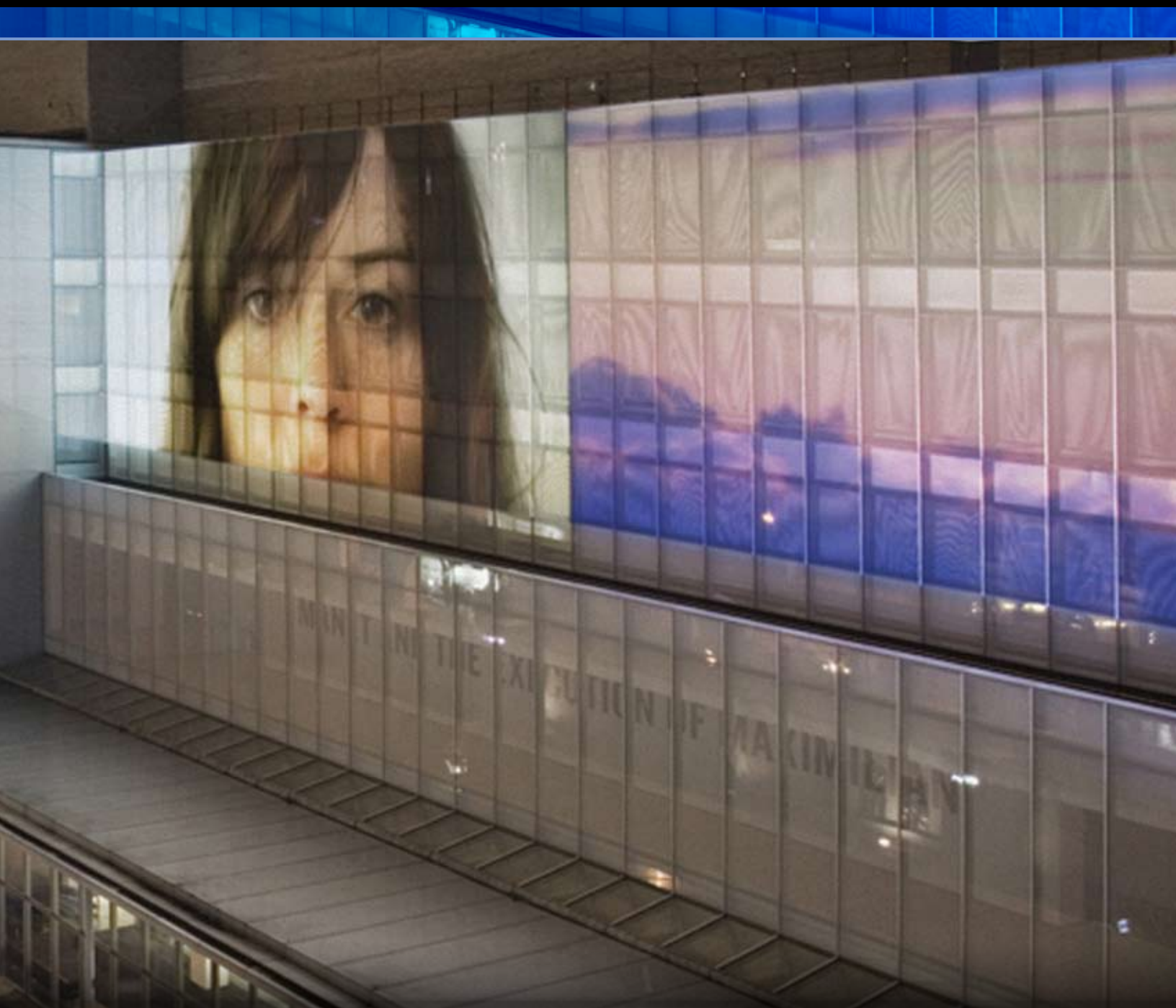


**CHRISTIE®**



▲ Doug Aitken: Sleepwalkers. January 16 – February 12, 2007.  
A joint project of Creative Time and The Museum of Modern Art.  
View from 54th Street. © 2007 Doug Aitken Photo: Fred Charles





With Christie, we offer you choice and flexibility – two of the best tools possible to make the image on-screen a reflection of your business. Whether presenting text, images or multimedia, Christie's purpose-built digital projectors and projection equipment offer features for the most demanding applications, with Christie's unparalleled support and service to back them.

Christie's optional lenses are specifically designed for our DLP® projectors that offer fixed short-throw, medium and long-throw zoom choices. Our interface modules make the right connection between the latest sources

and the best possible projection performance – even letting you shape that image onto virtually any surface imaginable.

Our installation accessories let you carry, handle, transport, rig, fly or install our projectors wherever you need to. And whether they are close at hand in a permanent install, or a hundred feet away – you've got the control you need to make a perfect impression.

Christie – easy to own, easy to install, easy to operate.



Christie optional input modules offer installation flexibility and compatibility with any data, video, or HDTV source in use today. From VGA through to QXGA, Christie's optional modules offer you the freedom of choice. And, our multi-standard video decoder and horizontal and vertical scaling of all inputs, built-in to all 3-chip projectors, gives you the ability to connect to virtually anything in the boardroom, training room, classroom, auditorium or on the big stage.

**SDI module**  
38-804602-51

- Digital display for composite video input
- Displays standard definition PAL/NTSC sources
- Produces a sharper, crisper image and better signal quality with very little signal loss
- Capable of handling longer cable lengths due to digital signal
- Active loop-through regenerates signal to maintain signal strength from the original device

**HD-SDI module**  
38-804611-51

- Supports high definition serial digital input
- Creates a sharper, crisper image with much better signal quality and very little signal loss
- Capable of handling longer cable lengths without signal loss, due to digital nature

**Digital Video Interface**  
38-804635-51

- Displays any DVI data source
- Regenerate signal-in and loop-through to multiple devices out
- Produces a sharper, crisper image and better signal quality with very little signal loss
- Capable of handling longer cable lengths due to digital signal

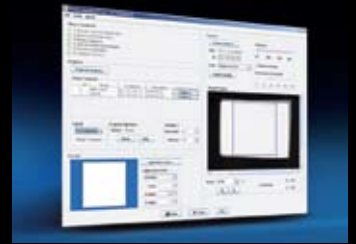
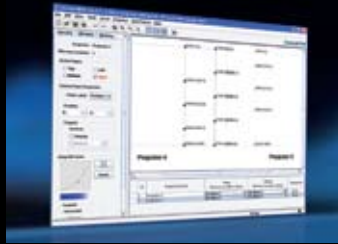
**RGB 400 active loop through input module**  
38-804607-01

- Module receives analog RGB input signals from computers or other RGB source devices
- Video inputs are 75S terminated
- Video outputs provide buffered loop-through to another display device

**Dual SD/HD-SDI**  
38-804656-51

- Adds an additional two inputs with each module
- Expands input capability with one module, leaving optional slots open
- Provides more flexibility in source connectivity
- Supports standard definition and high definition serial digital input
- Creates a sharper, crisper image
- Produces a better signal quality with very little signal loss
- Longer cable lengths can be utilized without loss of signal





## Christie Twist™ 108-103101-01

Christie Twist™ is a combination of hardware and software which provides finger-tip control to expertly edge-blend multiple non-linear images seamlessly. Images can be warped to fit virtually any dimension or shape display, and multiple blend and warp properties can be stored on the projectors – providing easy access and immediate recall of settings.

Christie Twist™ features a user-defined warp grid controlled from easy-to-use software GUI with latency typically as low as 10-20 lines. The GUI runs on an external PC and enables users to configure many of the features of the Christie Twist™ hardware. Once the warping and blending grids are set for multiple projectors, the properties will be stored on the projectors and on the external PC.

- Allows warping, blending and masking of projectors with up to a 10 x 10 grid. Additional functions: edge blending with curved edge contours, anti-aliasing filtering, sharpness filtering
- Display control points and warp lines on projector – a test pattern is generated in the projector that shows the warp grid and identifies the warp control points
- Add, delete, copy and paste of multiple warps, blends and masks on a single projector
- Control up to 6 projectors from any PC via Ethernet or RS-232 using the Christie Twist™ virtual remote

## Christie Twist™ Pro 108-247101-02

An optional upgrade, Christie Twist™ Pro software offers the following additional capabilities:

- Single license of Christie Twist™ Pro supports an unlimited number of projectors per array
- Allows an unlimited and arbitrary number of grid lines (up to and beyond a 10'x 10' warping grid)
- Advanced edge blending and blend masking
- Rotate and Flip capabilities
- Gradient preview of edge blends
- Brightness uniformity controller

## Christie AutoStack™ 108-308101-01

Want to set up faster, professional quality, multiple-projector displays in just minutes? Part of the Christie Truelmage™ suite of integrated solutions, Christie AutoStack™ is a vision-based solution that enables stacking and blending of projector arrays in a fraction of the time it takes manually. Christie AutoStack™ is available for any projector equipped with Christie Twist™.

Up to 12 stacked and blended projectors can be automatically calibrated with unsurpassed accuracy, in as little as 2 minutes per projector. The software driven camera-based system supports various screen sizes and aspect ratios, utilizing screen points for quick geometric calibration.

Christie AutoStack™ provides the opportunity to include complex projector arrays in both rental staging and fixed installs without increasing time, labor or resources. Now, professional quality results can be achieved with minimal experience required, enabling users to utilize multiple projection arrays for impact, brightness or redundancy without excess time and labor.

- Blend and stack a typical 2 x 2 configuration in approximately 8 minutes (2 minutes per projector)
- Intuitive user interface with real-time camera feedback
- Supports up to 2 x 3 blended and stacked configurations for a total of 12 projectors
- Rugged high resolution industrial charge coupled-device (CCD) camera
- Ships standard with rugged travel carrying case





Lens	High brightness	High contrast
0.8:1 Fixed	113-104106-01	-
1.1:1 Fixed	38-809071-51	-
1.25 – 1.45:1 Zoom	38-809073-51	38-809079-51
1.45 – 1.8:1 Zoom	38-809074-51	38-809061-51
1.8 – 2.4:1 Zoom	38-809075-51	38-809052-51
2.2 – 3.0:1 Zoom	38-809076-51	38-809053-51
3.0 – 4.3:1 Zoom	38-809077-51	38-809069-51
4.3 – 6.0:1 Zoom	38-809072-51	38-809081-01
5.5 – 8.5:1 Zoom	38-809078-51	38-809080-01

**Specialty lenses**



38-809054-51  
Anamorphic lens 1.26X

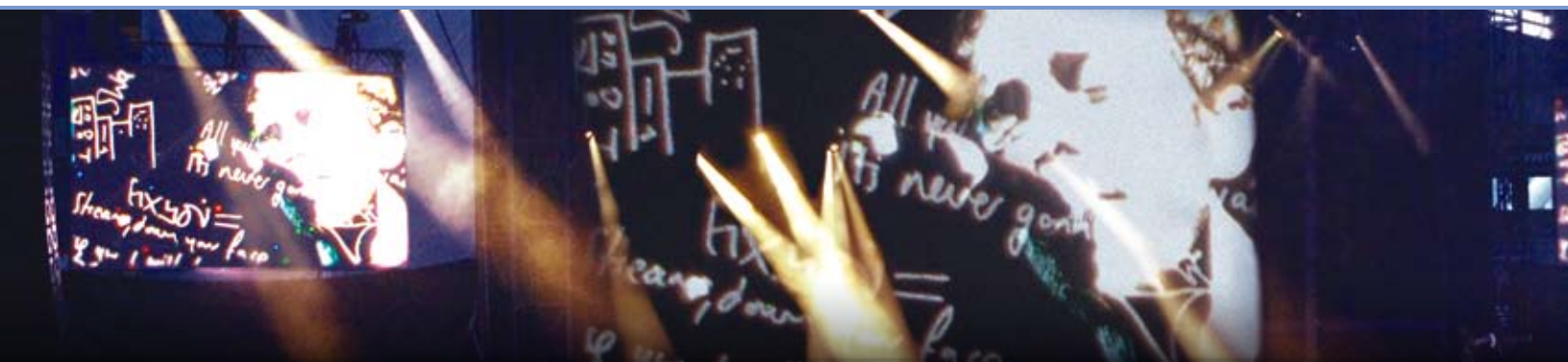


108-111102-01  
Motorized anamorphic lens mount

**Lenses**

Christie offers a range of fixed short-throw, medium and long throw lenses offer a wealth of flexibility to accommodate virtually any installation requirement. Available in both high brightness and high contrast options, you can choose the specific lens to meet your exact display need.

The Christie anamorphic lens and lens mount are recommended when projecting cinema scope content (2.35:1 aspect ratio). With the same throw distance, this lens creates a cinema scope image size while maintaining the full panel resolution.





### 2.0kW CDXL

003-000598-02

- 3500 hours typical life



### 3.0kW CDXL

003-000599-02

- 2500 hours typical life

### 4.5kW CDXL

003-000600-02

- 900 hours typical life

### 6.0kW CDXL

003-000601-02

- 1000 hours typical life  
(750 hours at 6.6kW)

## Lamps

CDXL high performance short-arc Xenon lamps offer increased brightness in the same form factor as standard Xenon grade lamps. Available in 2.0, 3.0, 4.5 and 6.0kW, Christie's CDXL lamps provide higher output and brightness in a more cost-efficient package.



▼ Coldplay's "Twisted Logic" European tour included Glastonbury, Dublin, London and Bolton. A pair of flagship Christie Roadie 25K projectors were integrated into the dynamic stage backdrop selected by Robin Weallean's company The Picture Works, for their high brightness and native high resolution output. Created by Siyan show director Bryan Leitch and lighting designer Nick Whitehouse for Coldplay's "Twisted Logic" tour, it was Coldplay's second world tour with the lighting company Siyan and the first with the high-output 3-chip DLP® Roadies. They were dry hired

to the production by The Picture Works as part of a package that included sophisticated camera and control equipment. Projection video had been introduced by Coldplay's Chris Martin and his creative team, with the idea of using it selectively in widescreen format, upstage center. Since most shows have been outdoors, they have needed to rely on all 25,000 ANSI lumens, 10-bit image processing and 2048 x 1080 resolution of the Roadies.





**Rigging frame**

38-814007-51

For rigging or "flying" in a suspended installation, and/or for stacking two projectors together.



**Rigging clamps**

113-102101-01

Christie's supplied method of rigging the Roadies; clamps can be used on the rigging frame or directly on the Roadie 30K.



**Lamp safety kit**

598900-095

Jacket, shield and gloves, for the safe handling of Christie's Xenon Bubble lamps.

The Christie Roadie HD+30K utilizes Christie's unique, flexible split-body design and features a new, improved rear air exhaust and stackability while the revamped lens mount increases its rock solid performance. Enhancing this performance are accessories that ease life on the road – rig, fly, move, ship again and again, with our purpose-built accessories that compliment our most road-worthy benchmark Rental/Staging product.

▼ The first woman to solo anchor on a major network news broadcast, Katie Couric's debut on CBS was one of the most anticipated events on primetime television. The network wanted a new set that employed multiple display technologies at different configurations, resolutions and formats. Among the various screen formats utilized, installer Video Vision developed a 16 x 9 rear-projection screen located behind Couric, fed by a Christie Roadster S+12K projector.

Video Visions designed and installed a stage that incorporated different digital and analog formats – from standard definition, to HD, to high-resolution computer graphics – with the ability to edit on the fly and switch images from one screen to another.

Integral to the visual effect, rp Visual Solutions built an enclosure consisting of a dnp Giant Wide Angle Optical 180" curved screen and rpm Rear Projection Mount. To handle the multiple image-processing tasks, Video Visions used a Vista Spyder system. Because the set would be subjected to high ambient light, Video Visions chose the Christie Roadster S+12K DLP® projector with 0.73:1 lens, recognized as the brightest and most powerful in its class, with the best reputation for reliability.

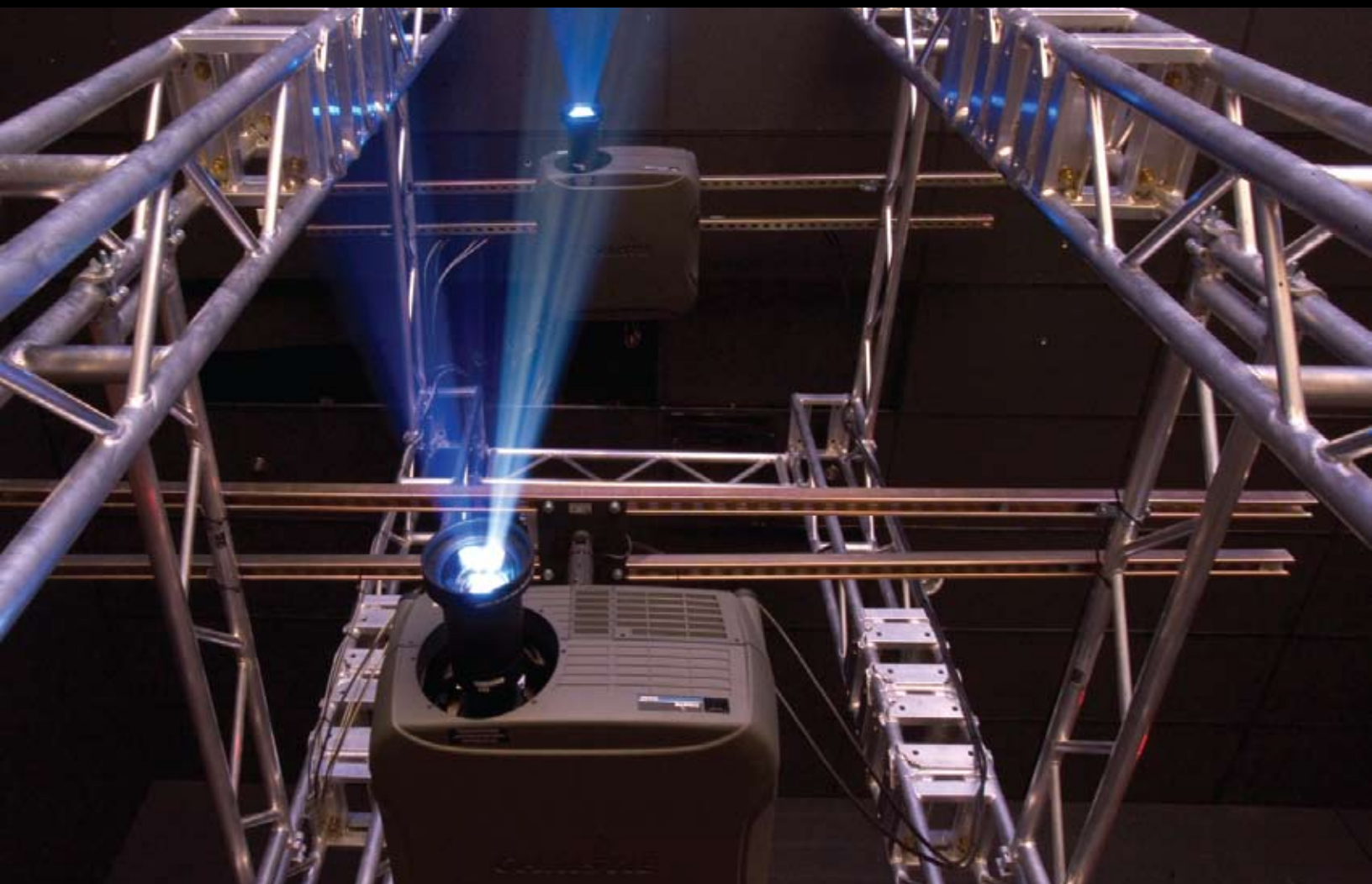
Photo courtesy of: rp Visual Solutions





- ▼ **Cornerstone Christian Faith Church, Chandler, AZ**  
Cornerstone Christian Fellowship Church was started when Pastor Linn Winters and Pastor Brent Richardson began to talk about the possibility of planning a church in Chandler, Arizona. They desired to answer to those who wanted contemporary worship, and be exciting for those who had lost interest in church. The dream was to incorporate solid bible teaching with dynamic music and practical sermons.

Clark ProMedia, Atlanta, GA, worked with Cornerstone to bring their worship services to life and increase attendance. With 7000 ANSI lumens and a native 16:9 HD format, the Christie DW6K offers exceptional image quality and detail for widescreen scope – perfect to fill the screens of the 1500-seat auditorium. Four stacked Christie DW6Ks were edge-blended together with 4 Vista Systems Spyders on a custom 36' x 19' center screen from Stewart. Two 16' x 9' side screens further supported the main stage with two more Christie DW6K's.





**Handles**

113-101101-01

Optional body handles for handling and rigging can be retrofitted to the Roadie 25K.



**Lens mount & spacer**

003-001459-01

The re-designed lens mount is rock solid. No matter what the rigors of the road offer, your images are stable and true.



**Low profile extractor**

113-103101-01

Allows for Roadie 25K's to be retrofitted with the new low profile extractor. This eliminates the need for the external extraction fan making the product easier to set-up. It allows for easier stacking of Roadies using the rigging frame.



**High contrast aperture kit**

38-813028-51

Offers the flexibility of customizing either contrast or brightness within an image or display.



- 6' cable kit** 38-814003-51
- 25' cable kit** 38-814004-51
- 50' cable kit** 38-814005-51
- 100' cable kit** 38-814006-51

Connects the 7kW switching ballast to the projection head for greater installation flexibility.



**Extraction fan kit**

38-814008-51

Directs hot air away from projector while in operation to prevent overheating and provides installation flexibility with varying duct work sizes.







**7kW lamp ballast**  
38-814001-51

Separate Christie 7kW low-ripple switch-mode lamp ballast which produces images with no ripple and reduced flicker. Ballast can be conveniently stored up to 100ft away from the projection head (cable kit dependant). For use in all countries with all Christie CDXL bulbs.



**Filter replacement (6-pack)**  
03-001981-51P

To protect the investment you made in your projector, keep it running properly by regularly replacing the specially designed air filters.



**Heat exhaust offset duct**  
108-100001

Allows bottom unit in a stacked pair of Roadies to exhaust out the side.

**LAD filter replacement (3-pack)** 03-001982-51P



▼ With built-in body handles and optional rigging clamps, the Christie Roadie HD+30K is a shining star on the road – easy to handle, to rig, to fly, to ship, and the world's best, brightest digital projector!





## Lenses

Christie's HD lens suite includes both fixed and zoom focal lengths offering short, medium and long-throw projection to provide flexibility for any installation requirement. Specifically designed for HD display, these lenses accommodate the pixel pitch of High

Definition DMDs for maximum brightness and contrast and improved image sharpness and better lateral performance. Purpose-built for 3-chip DLP® projectors, this lens suite supports all of Christie's latest HD projectors and can be utilized on SXGA+ and 720p projectors as well.



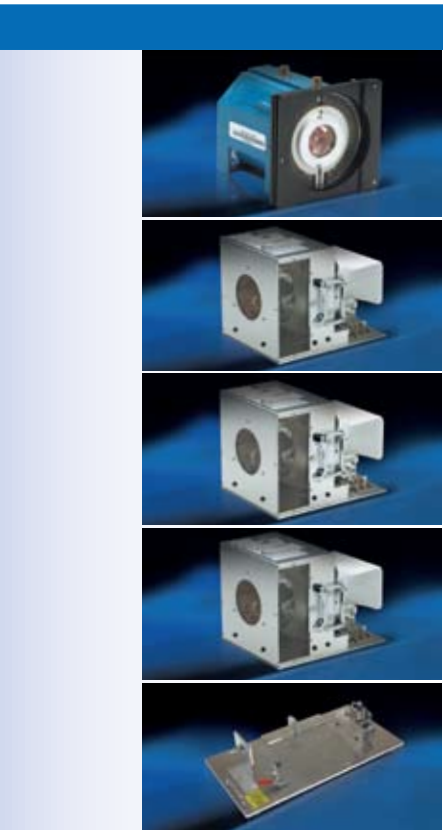
Part number	Description
104-110101-01	Lens 0.67:1 CT HD
104-111101-01*	Lens SXGA+ 1.2:1/HD 1.1:1 FP
104-116101-01**	Lens SXGA+ 1.2:1/HD 1.1:1 RP
104-137101-01	Lens 1.25-1.6 SX+/1.16-1.49:1 HD
104-112101-01	Lens 1.4-1.8:1 CT HD
104-113101-01	Lens 1.8-2.6:1 CT HD
104-114101-01	Lens 2.6-4.1:1 CT HD
104-115101-01	Lens 4.1-6.9:1 CT HD
104-130101-01	Lens 7.5-11.2:1 SX+/6.9-10.4 HD

\*FP lens: screen width from 1.6m to 13m    \*\*RP lens: screen width from 0.9m to 1.6m

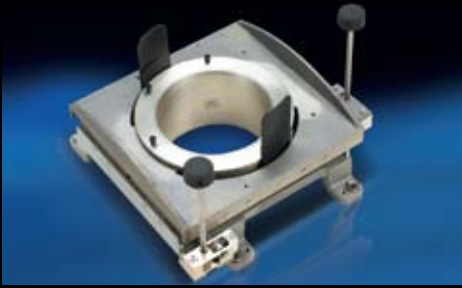
## Lamps

Christie DLP® 3-chip products feature user-replaceable, pre-aligned Xenon lamp modules that offer adjustable lamp power for required brightness. The stable color temperature

over the course of the lamp life and the adjustable power range provides the best lamp technology and color reproduction for color matching across multiple screens.



Part number	Description
003-120118-01	500W Xenon Cermax (HD2Kc, HD3K), 2000 hours
003-120117-01	1.0kW Xenon Cermax (DW3K, DW3Kc, DW4Kc, DW5K, DS+5K, DS+6K, HD+5Kc, HD6K, HD5K), 1500 hours
004-120135-01	1.2kW Xenon Cermax (DS+8K, DW6K, DW7Kc, DW8K, HD8K), 1500 hours
003-120135-01	2.0kW Lamp Module (Bulb and Reflector) (Roadster S+12K, HD12K), 1000 hours
03-000887-01P	2.0kW Lamp Bulb Only Kit (Roadster S+12K, HD12K), 1000 hours
004-120135-01	2.0kW Lamp Module REFURB (Bulb and Reflector) (Roadster S+12K, HD12K), 1000 hours
03-900518-51P	2.4kW Lamp Module (Bulb and Reflector) Lamp, (Roadster S+16K), 750 hours
03-000883-01P	2.4kW Lamp Bulb Only Kit (Roadster S+16K), 750 hours
03-900518R51P	2.4kW Lamp Module REFURB (Bulb and Reflector) (Roadster S+16K), 750 hours
003-000306	3.0kW Lamp Module (Bulb and Reflector) Lamp, (Roadster S+20K, HD18K), 750 hours
003-000305	3.0kW Lamp Bulb Only Kit (Roadster S+20K, HD18K), 750 hours
004-000306	3.0kW Lamp Module REFURB (Bulb and Reflector) (Roadster S+20K, HD18K), 750 hours
38-804900-01	Bulb alignment tool, 2.0kW, 2.4kW & 3.0kW The bulb alignment tool allows you to replace bare bulbs in a Roadster lamp module with proper positioning and alignment, so you can keep your glass reflector. This reduces the costs of lamp changes requiring only the purchase of a bare bulb and not an entire lamp module.



### Manual legacy lens mount

38-804902-01

Manual lens mount for using lenses from legacy Roadster and Roadie (pre-2004) models on any of the latest Christie Roadster models.



### OEM lens adapter

38-804952-01

Allows competitive lenses to operate with Christie Roadster projectors, for a cost-effective way to utilize existing lenses.



### Portrait display adapter

118-116109-01

This adapter attaches to the projector's lens and enables users to project the image in portrait orientation instead of landscape.

### ILS lens adapter kit

108-331108-01

The Christie ILS Lens Adapter Kit enables users to mechanically convert current lenses in the Christie 3-chip DLP® DW, SX+ and HD projector series to function with Christie M Series projectors. The conversion kit includes complete instructions and allows the lenses to be converted in the field by the end user.

The following lenses can be converted using this kit:

104-110101-01 Lens, 0.67:1 HD  
 104-111101-01, Lens, SXGA+ 1.2:1/HD 1.1:1 FP  
 104-112101-01, Lens, 1.4-1.8:1 HD  
 104-113101-01, Lens, 1.8-2.6:1 HD  
 104-114101-01, Lens, 2.6-4.1:1 HD  
 104-115101-01, Lens, 4.1-6.9:1 HD  
 104-137101-01, Lens SX+1.25-1.6 /HD 1.16-1.49

### Remote IR sensor

104-106101-01

When projectors are mounted in situations where a remote control does not have line of sight, this module can be wired to the projector and placed up to 25 feet away in a location that is more accessible by the remote.



### Carrying handles (Roadsters)

104-108101-01

Designed to work with all Roadster models, the carrying handles enable quick, easy and safe hand transport of the projector.



### Carrying handles (DS+, DW, HD Series)

104-107101-01

Designed to work with DS+, DW and HD Series projectors, the carrying handles enable quick, easy and safe hand transport of the projector.



### Wired remote control

104-109001-01

Can be run as wired remote, or as IR keypad with longer range. For fast, easy set-up and reliable individual control of a specific projector.

### Stacking kit

104-117101-02

Stack up to three projectors (including hybrid stack combinations) into a light-weight, sturdy frame that can also be connected to the integral rigging points on any current Christie Roadster projector. Adjustable mount wheels for projector alignment.





**Ceiling mount extender rod**  
104-101001

This ceiling mount extension kit lets you quickly and easily set the correct drop distance for your projector installation. It's adjustable in 3/4" increments and provides a solid, rigid mount for your multimedia projector from 24 1/4" to 46".



**Ceiling mount (DS+, DW, HD Series)**  
104-100001

**Ceiling mount (Roadsters)**  
104-104001

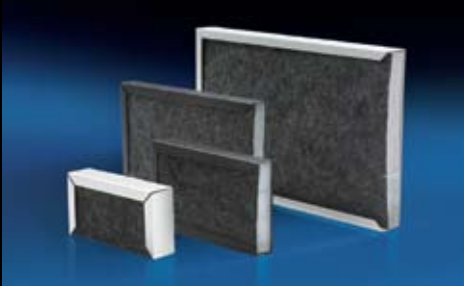
Allows for precision adjustments needed to quickly achieve registration. Quick disconnect feature allows you to remove/replace the projector without losing registration.



**Sound baffle kit**  
104-103101-01

With the new sound kit, 58dB sound power and 48dBA sound pressure can be achieved, calculated at 1m. It reduces the overall dB levels and improves overall quality of sound by reducing the harsh sounding and annoying high-frequency sounds.

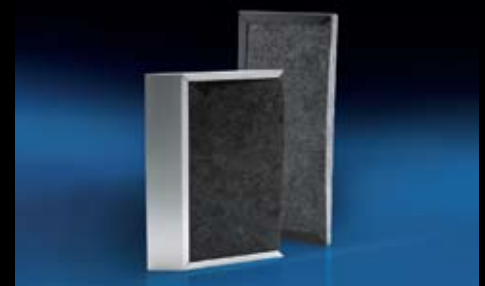
**Filter Kits**



104-127101-01



104-128101-01



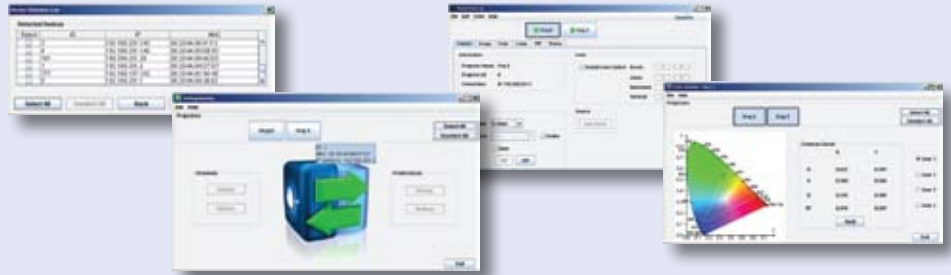
104-129101-01

Part number	Description	Notes
104-125101-01	Coarse Dust Filter Kit 0.5 & 1.0 & 1.2kW	Filter Media Mount + 1 set of filters (front & rear)
104-126101-01	Coarse Dust Filter Kit 2.0 & 2.4 & 3kW	Filter Media Mount + 1 filter
104-127101-01	Fog Juice Filter Kit 0.5 & 1.0 & 1.2kW	Filter Media Mount + 1 set of filters (front & rear, inside & outside)
104-128101-01	Fog Juice Filter Kit 2.0 & 2.4kW	Filter Media Mount + 1 set of filters (front inside & outside)
104-129101-01	Fog Juice Filter Kit 3.0kW	Filter Media Mount + 1 set of filters (front inside & outside)
104-131101-01	Coarse Dust Filter Kit Replacements 0.5 & 1.0 & 1.2kW	10 pc of each of the Coarse Dust Filters
104-132101-01	Coarse Dust Filter Kit Replacements 2.0 & 2.4 & 3kW	10 pc of each of the Coarse Dust Filters
104-127101-01	Fog Juice Filter Kit Replacements 0.5 & 1.0 & 1.2kW	10 pc of each of the Fog Juice Filters
104-128101-01	Fog Juice Filter Kit Replacements 2.0 & 2.4	10 pc of each of the Fog Juice Filters
104-129101-01	Fog Juice Filter Kit Replacements 3.0kW	10 pc of each of the Fog Juice Filters



## Enhance the power of your projectors with Christie RoadTools™

Christie RoadTools™ enable users to set up systems faster, manage their projectors better and increase their productivity. This robust software suite lets you easily use, command and control any Christie projectors that use a 10-bit image processing electronics module. From initial set-up of your projector, to the complete customization of the display, Christie RoadTools™ minimizes set-up time. Ongoing control of Christie projectors is easier and more efficient, saving both labor costs and time.



### RoadTools™ Solutions

#### PowerTool



Ethernet-based control of typical projector settings such as image settings, color, lamp, Picture in Picture. Easy-to-use GUI. Managing single or multiple projectors, the tool also allows for the setting and saving of configuration files for easy recall.

#### ColorMatcher



ColorMatcher reads each 3-chip DLP® projector's internal x and y color coordinates, finds the common color space and adjusts the settings so they are matched. ColorMatcher speeds up the set-up processes to a 95% acceptable solution within seconds. Then you do the final tweaks to match your environment or preferences.

#### VirtualRemote



A graphic remote that provides full functionality with the added ability to manage single or multiple projectors. Let's you work with the 'remote control' even when you are out of IR range or not physically connected to the projectors via the wired remote. Great for set-ups. Eliminates problems of lost or missing remotes.

#### SettingsBackup



Backup and restore channels and preferences. Set up a single projector then upload those settings to other similarly installed units. This can save time and money when installing a large number of systems. It can also make swapping a projector very fast, minimizing set-up and down time. Simply back-up the old projector settings and upload to the new one.

#### LogoLoader



The software allows you to upload a logo or any graphic image you choose to display when the projector starts up. Great for customizing your visual projector experience.

For a list of Christie discontinued accessories, downloads and resources, please visit: [christiedigital.com/AMEN/DiscontinuedProducts](http://christiedigital.com/AMEN/DiscontinuedProducts)

#### Corporate offices

USA – Cypress  
ph: 714-236-8610

Canada – Kitchener  
ph: 519-744-8005

#### Worldwide offices

United Kingdom  
ph: +44 118 977 8000

Germany  
ph: +49 2161 664540

France  
ph: +33 (0) 1 41 21 44 04

Hungary/Eastern Europe  
ph: +36 (0) 1 47 48 100

Singapore  
ph: +65 6877 8737

India  
ph: +91 80 4146 8940

Shanghai  
ph: +86 21 6278 7708

Beijing  
ph: +86 10 6561 0240

Korea  
ph: +82 2 702 1601

Japan  
ph: +81 3 3599 7481



ISO 9001



ISO 14001



For the most current specification information, please visit [www.christiedigital.com](http://www.christiedigital.com)



Copyright 2009 Christie Digital Systems USA, Inc. All rights reserved. All brand names and product names are trademarks, registered trademarks or tradenames of their respective holders. Canadian manufacturing facility is ISO 9001 and 14001 certified. Performance specifications are typical. Due to constant research, specifications are subject to change without notice. Printed in Canada on recycled paper. 2428 Jan 09

# CHRISTIE®