

SYSTEM 2000

STORAGE TRAYS



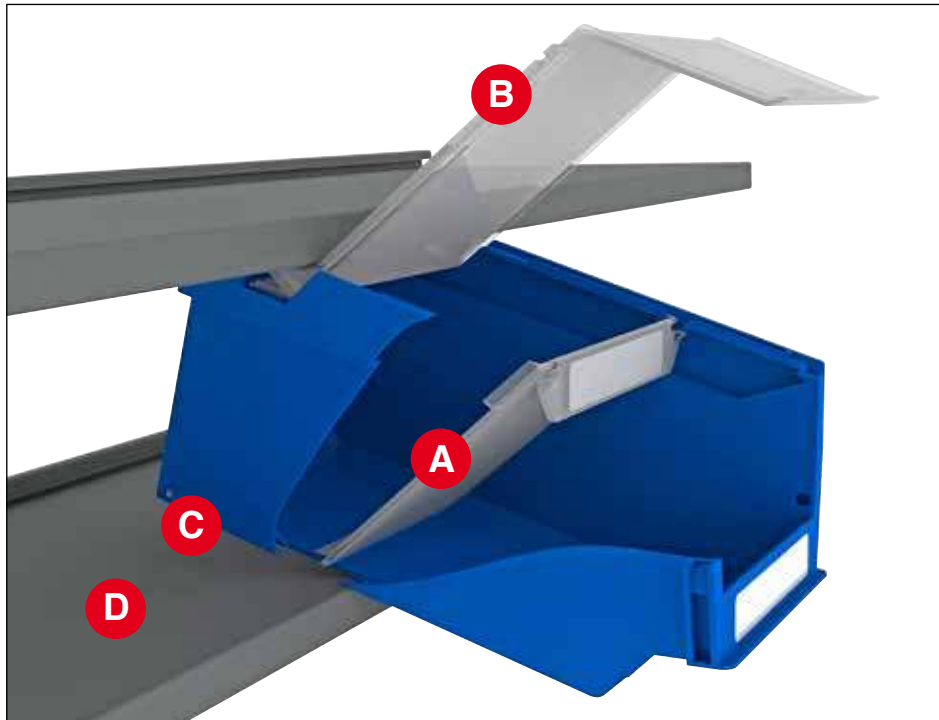
Protect value



Perstorp Plastic Systems

The smart System 2000

Easy, smooth, ergonomic, hygienic and economic handling of small parts.



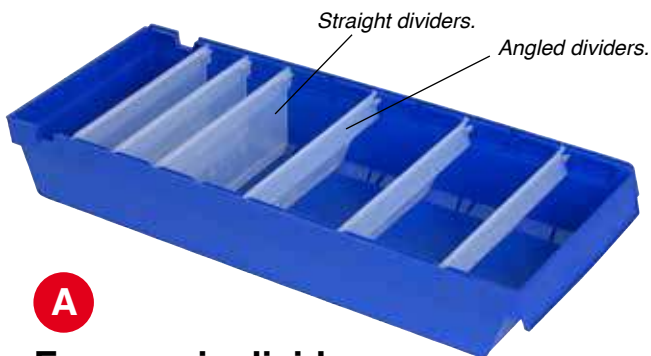
The System 2000 consists of bins and storage trays with several features for better and easier handling like self opening lids, wheels for easier pull out, dividers and fronts design for easier picking of small items and lids for dust protection. The bins are either nestable or stackable – or both! The product range fits into most existing shelves and cabinets.

The Lid covers the front opening.



B Selfopening lids

A number of bins and trays are available with lids for dust protection and more hygienic storage. They self open when the bin or tray is pulled out from the shelf and give easy access to the content. All lids cover the bins and trays front opening. For some of the nestable bins Top Lids can be used to make the bins stack on each other – and be used together with Front Cover to close front and still have easy access to the content.



A

Ergonomic dividers

Several of the bins and trays may be used with dividers to sort the content. The design of the dividers makes picking of parts efficient and ergonomic. Dividers are available straight or angled. Both straight and angled dividers may be used in the same bin or tray. A flexible lip on the bottom part of the dividers gives perfect fit to the bin or tray. All dividers are made in transparent material.

C Wheels

Integrated wheels will make handling in cabinets and shelves smooth and more ergonomic. It is easier to pull the bin or tray out from the shelf with wheels. When the bin or tray stands on the shelf the wheels are without any load.



D Combine bins and trays with different widths

The System 2000 is adapted to existing standard shelves and racks with 1.000 mm width. You can mix and fit the bins and trays in the same model serie on the shelf as follows.

Storage Trays Serie 20

Serie 20 trays are 80 mm high and 94 or 188 mm wide.
Max total width 940 mm on shelf 1.000 mm width. *

Tray width mm	Max mix of Storage Trays Serie 20 on shelf 1.000 mm – Total 940 mm					
94	0	2	4	6	8	10
188	5	4	3	2	1	0

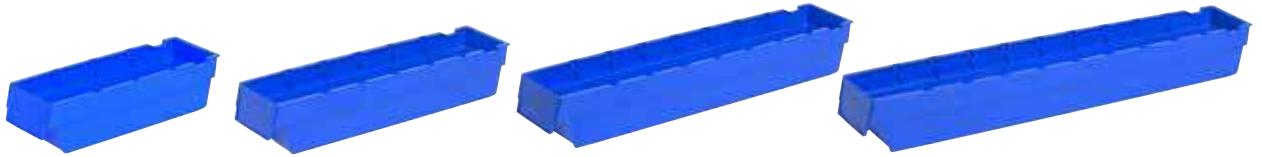
Storage Trays Serie 21

Serie 21 trays are 100 mm high and 115 or 230 mm wide.
Max total width 920 mm on shelf 1.000 mm width. *

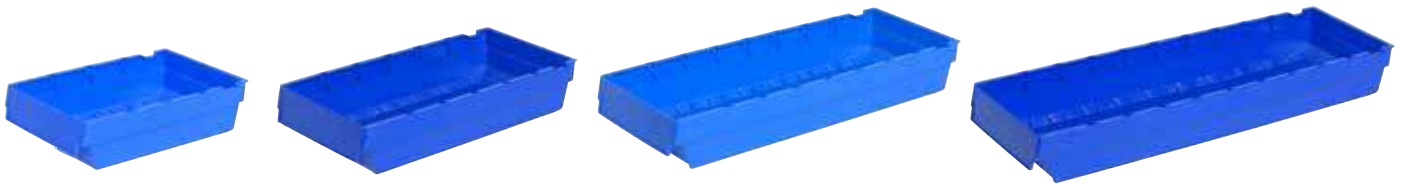
Tray width mm	Max mix of Storage Trays Serie 21 on shelf 1.000 mm – Total 920 mm				
115	0	2	4	6	8
230	4	3	2	1	0

Storage Trays Serie 20

Storage Trays
Seria 21
nest into
each other.



Model	2001	2011	2021	2031
L x W x H mm	300 x 94 x 80	400 x 94 x 80	500 x 94 x 80	600 x 94 x 80
● Blue	2001.000.5002	2011.000.5002	2021.000.5002	2031.000.5002
● Red	2001.000.2152	2011.000.2152	2021.000.2152	2031.000.2152
Yellow	No	No	No	No
Transparent Grey	No	No	No	No
Wheels	Yes	Yes	Yes	Yes
Angled Divider *	2011.400 (3)	2011.400 (5)	2011.400 (7)	2011.400 (9)
Straight Divider *	2011.600 (3)	2011.600 (5)	2011.600 (7)	2011.600 (9)
Label	2011.830	2011.830	2011.830	2011.830
Lid	No	No	No	No
Top Lid	No	No	No	No
Front Cover	No	No	No	No
Nesting	Yes	Yes	Yes	Yes
Stacking	No	No	No	No

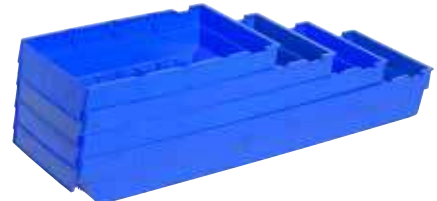


Model	2003	2013	2023	2033
L x W x H mm	300 x 188 x 80	400 x 188 x 80	500 x 188 x 80	600 x 188 x 80
● Blue	2003.000.5002	2013.000.5002	2023.000.5002	2033.000.5002
● Red	2003.000.2152	2013.000.2152	2023.000.2152	2033.000.2152
Yellow	No	No	No	No
Transparent Grey	No	No	No	No
Wheels	Yes	Yes	Yes	Yes
Angled Divider *	2013.400 (3)	2013.400 (5)	2013.400 (7)	2013.400 (9)
Straight Divider *	2013.600 (3)	2013.600 (5)	2013.600 (7)	2013.600 (9)
Label	2013.830	2013.830	2013.830	2013.830
Lid	No	No	No	No
Top Lid	No	No	No	No
Front Cover	No	No	No	No
Nesting	Yes	Yes	Yes	Yes
Stacking	No	No	No	No

Storage Trays
2001, 2011,
2021 och 2031
nested into
each other.



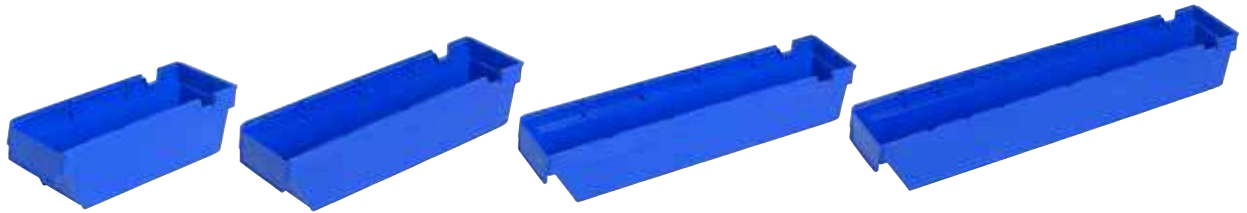
Storage Trays
2003, 2013,
2023 och 2033
nested into
each other.



* Figures in brackets (1-9) = Max number of dividers in bin or tray.

Storage Trays Serie 21

Storage Trays
Serie 21
nest into
each other.

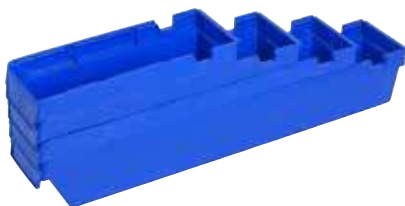


Model	2101	2111	2121	2131
L x W x H mm	300 x 115 x 100	400 x 115 x 100	500 x 115 x 100	600 x 115 x 100
● Blue	2101.000.5002	2111.000.5002	2121.000.5002	2131.000.5002
● Red	2101.000.2152	2111.000.2152	2121.000.2152	2131.000.2152
Yellow	No	No	No	No
Transparent Grey	No	No	No	No
Wheels	Yes	Yes	Yes	Yes
Angled Divider *	2111.400 (2)	2111.400 (3)	2111.400 (4)	2111.400 (9)
Straight Divider *	2111.600 (2)	2111.600 (3)	2111.600 (4)	2111.600 (9)
Label	2111.830	2111.830	2111.830	2111.830
Lid	No	2111.820	2121.820	No
Top Lid	No	No	No	No
Front Cover	No	No	No	No
Nesting	Yes	Yes	Yes	Yes
Stacking	No	No	No	No



Model	2103	2113	2123	2133
L x W x H mm	300 x 230 x 100	400 x 230 x 100	500 x 230 x 100	600 x 230 x 100
● Blue	2103.000.5002	2113.000.5002	2123.000.5002	2133.000.5002
● Red	2103.000.2152	2113.000.2152	2123.000.2152	2133.000.2152
Yellow	No	No	No	No
Transparent Grey	No	No	No	No
Wheels	Yes	Yes	Yes	Yes
Angled Divider *	2113.400 (2)	2111.400 (3)	2121.400 (4)	2113.400 (9)
Straight Divider *	2113.600 (2)	2113.600 (3)	2113.600 (4)	2113.600 (9)
Label	2113.830	2113.830	2113.830	2113.830
Lid	No	2113.820	2123.820	No
Top Lid	No	No	No	No
Front Cover	No	No	No	No
Nesting	Yes	Yes	Yes	Yes
Stacking	No	No	No	No

Storage Trays
2101, 2111,
2121 och 2131
nested into
each other.



Storage Trays
2103, 2113,
2123 och 2133
nested into
each other.



* Figures in brackets (1-9) = Max number of dividers in bin or tray.

Accessories

— No. * Figures in brackets (1-9) = Max number of dividers in bin or tray.

Availability and article numbers for accesories to our bins and trays.

Model	Angled Divider *	Straight Divider *	Label	Lid	Top Lid	Front Cover	Stacking Device	Stacking & Fixing Device
2001	2011.400 (3)	2011.600 (3)	2011.830	—	—	—	—	—
2011	2011.400 (5)	2011.600 (5)	2011.830	—	—	—	—	—
2021	2011.400 (7)	2011.600 (7)	2011.830	—	—	—	—	—
2031	2011.400 (9)	2011.600 (9)	2011.830	—	—	—	—	—
2003	2013.400 (3)	2013.600 (3)	2013.830	—	—	—	—	—
2013	2013.400 (5)	2013.600 (5)	2013.830	—	—	—	—	—
2023	2013.400 (7)	2013.600 (7)	2013.830	—	—	—	—	—
2033	2013.400 (9)	2013.600 (9)	2013.830	—	—	—	—	—
2101	2111.400 (2)	2111.600 (2)	2111.830	—	—	—	—	—
2111	2111.400 (3)	2111.600 (3)	2111.830	2111.820	—	—	—	—
2121	2111.400 (4)	2111.600 (4)	2111.830	2121.820	—	—	—	—
2131	2111.400 (9)	2111.600 (9)	2111.830	—	—	—	—	—
2103	2113.400 (2)	2113.600 (2)	2113.830	—	—	—	—	—
2113	2113.400 (3)	2113.600 (3)	2113.830	2113.820	—	—	—	—
2123	2113.400 (4)	2113.600 (4)	2113.830	2123.820	—	—	—	—
2133	2113.400 (9)	2113.600 (9)	2113.830	—	—	—	—	—

Product overview

For article numbers see the requested product on pages 6-10.

● Yes. — No. ** With Top Lid. *** With Stacking Device or Stacking & Fixing Device.

For bins and trays complete article number add to the model number for colour: ● Blue 000.5002, ● Red 000.2152, ● Yellow 000.1028 and ● Tranparent/Grey 000.7046. Example: Red Storage Bin model 2076 has article number 2076.000.2152.

Model	L x W x H mm	Colour	Wheels	Angled Divider	Straight Divider	Label	Lid	Top Lid	Front Cover	Nest-able	Stack-able
-------	--------------	--------	--------	----------------	------------------	-------	-----	---------	-------------	-----------	------------

Storage Trays Serie 20 *Page 8*

2001	300 x 94 x 80	● ●	●	●	●	●	—	—	—	●	—
2011	400 x 94 x 80	● ●	●	●	●	●	—	—	—	●	—
2021	500 x 94 x 80	● ●	●	●	●	●	—	—	—	●	—
2031	600 x 94 x 80	● ●	●	●	●	●	—	—	—	●	—
2003	300 x 188 x 80	● ●	●	●	●	●	—	—	—	●	—
2013	400 x 188 x 80	● ●	●	●	●	●	—	—	—	●	—
2023	500 x 188 x 80	● ●	●	●	●	●	—	—	—	●	—
2033	600 x 188 x 80	● ●	●	●	●	●	—	—	—	●	—

Storage Trays Serie 21 *Page 9*

2101	300 x 115 x 100	● ●	●	●	●	●	—	—	—	●	—
2111	400 x 115 x 100	● ●	●	●	●	●	●	—	—	●	—
2121	500 x 115 x 100	● ●	●	●	●	●	●	—	—	●	—
2131	600 x 115 x 100	● ●	●	●	●	●	—	—	—	●	—
2103	300 x 230 x 100	● ●	●	●	●	●	—	—	—	●	—
2113	400 x 230 x 100	● ●	●	●	●	●	●	—	—	●	—
2123	500 x 230 x 100	● ●	●	●	●	●	●	—	—	●	—
2133	600 x 230 x 100	● ●	●	●	●	●	—	—	—	●	—