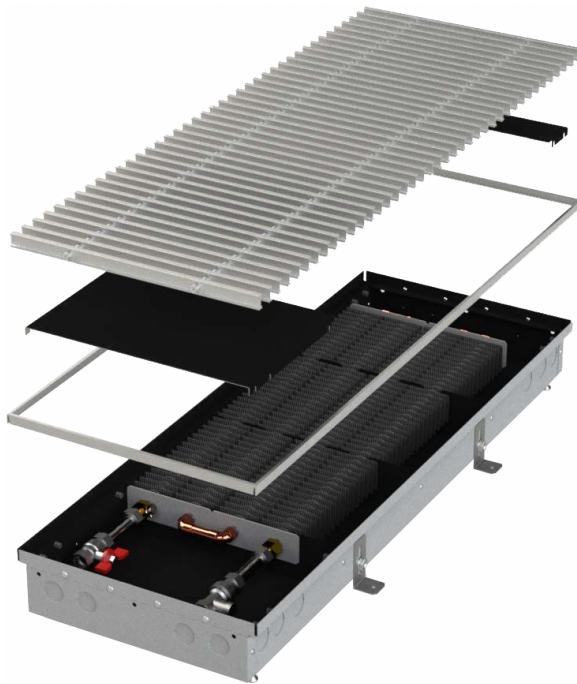


PW 90 / PW 90E

TRENCH HEATER WITH NATURAL CONVECTION
WITH UNIVESRAL CONSTRUCTION



CHARACTERISTICS

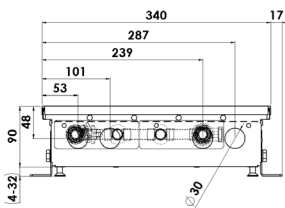
- **STANDARD** - the body of the convector is made from a **high quality stainless steel**
- **ECONOMY LINE / E** - made of **galvanised steel** sheet with internal black coating
- high natural convection
- short response time
- **universal right-left design**
- the new design enables joining the convectors into any long joint

DIMENSIONS

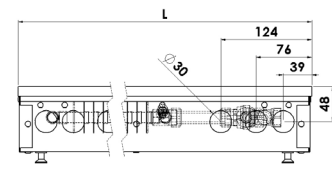
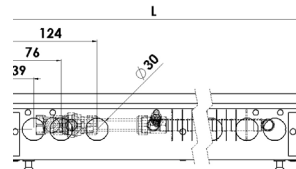
width - with standard frame	340 mm
width - with covering frame	206 mm
height	90 mm
length	900 - 3000 mm
connection *	G1/2"

* internal thread on the heat-exchanger, without water connection accessories

CROSS SECTION



LONGITUDINAL SECTION

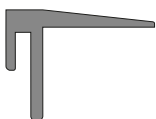


FRAMES

- Standard frame (AL-aluminium)



- Covering frame (AL-aluminium)

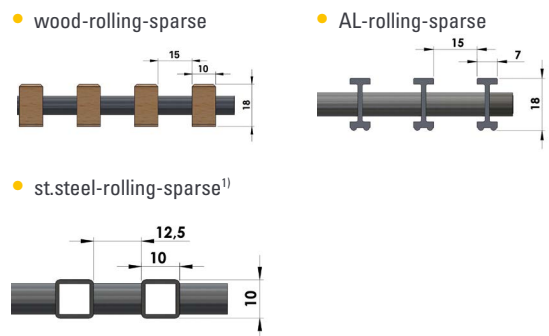


GRILLES - materials



(shades of the grilles are only illustrative)

GRILLES - profile



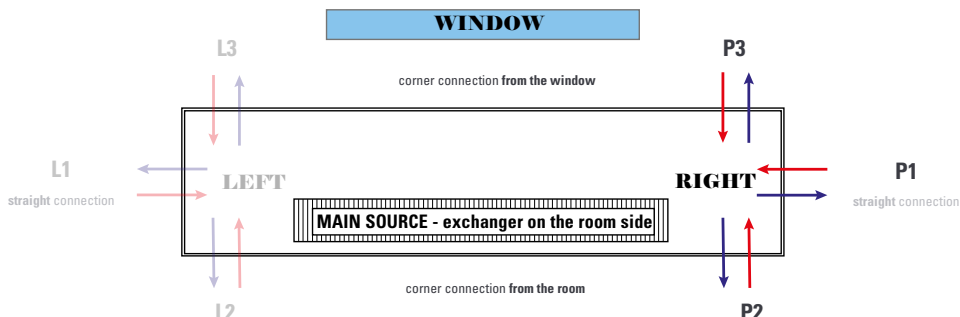
1) the grille must be ordered with the convector due to the modification of the convector construction

Standard grilles are transverse, if you are interested in **LONGITUDINAL GRILLES**, please contact your sales representative.

UNIVERSAL ORIENTATION AND CONNECTION OF THE CONVECTOR

Supplied as a **RIGHT VERSION**, but can be converted to the left version by the customer. In the case of atypical production (joints / corners of convectors) the design is set according to the approved drawing documentation.

If the convector is used as an **additional heat source** which prevents the condensation of the window, the correct position of the exchanger is at the window side. Water connection (**straight R1 / corner R2 or R3**) must be specified with the order of the convector.



HEATING OUTPUT

length L [mm]	input / output water temperature [°C]	heating output Q [W]		
		air temperature tA [°C]		
		15	20	22
09 = 900	85/75	393	353	337
	75/65	314	276	261
	65/55	240	205	191
	45/40	124	94	83
10 = 1000	85/75	458	411	393
	75/65	366	322	305
	65/55	280	239	223
	45/40	144	110	97
12 = 1250	85/75	621	558	533
	75/65	497	437	414
	65/55	379	324	302
	45/40	196	150	132
15 = 1500	85/75	785	705	674
	75/65	627	552	523
	65/55	479	409	382
	45/40	247	189	167
17 = 1750	85/75	949	852	814
	75/65	758	667	631
	65/55	579	494	461
	45/40	299	228	202
20 = 2000	85/75	1112	999	954
	75/65	889	782	740
	65/55	679	580	541
	45/40	350	268	236
22 = 2250	85/75	1276	1146	1095
	75/65	1019	897	849
	65/55	779	665	621
	45/40	402	307	271
25 = 2500	85/75	1439	1293	1235
	75/65	1150	1012	958
	65/55	879	750	700
	45/40	454	346	306
27 = 2750	85/75	1603	1440	1375
	75/65	1281	1127	1067
	65/55	978	835	780
	45/40	505	386	341
30 = 3000	85/75	1766	1586	1516
	75/65	1412	1242	1176
	65/55	1078	921	859
	45/40	557	425	375

EXAMPLE OF ORDER CODE

stainless steel

KPSA U 340 09* 090 41A

galvanised steel

KPSA U 340 09* 090 45A



* length complete according to the specification of the convector

Orientation: U = universal connection

CONNECTION OPTIONS AND ACCESSORIES

- connection **WITHOUT HEAD**
- connection **WITH A THERMOSTATIC HEAD**
- connection **WITH A CUSTOMER HEAD** (after consultation)

The type of connection accessories varies according to the type and purpose of the convector. Connection accessories are packed separately and are not included in the standard convector delivery. Information on request from your sales representative or on our website.

Convectors are designed to the **CONCRETE FLOOR**, in case of **HOLLOW FLOOR** installation, please consult with your sales representative.

The standard delivery includes convector, anchoring accessories and covering grille. All other accessories (connection accessories, control elements, etc.) must be ordered and specified separately.

The technical parameters are set according to the relevant standards. In fact, they may vary depending on the location of the convector, the cover grille, the connection type.

As a part of the product development, MINIB, a.s. reserves the right of construction and price adjustments.

INDIVIDUAL CALCULATION
of technical data you can
find on our website.

