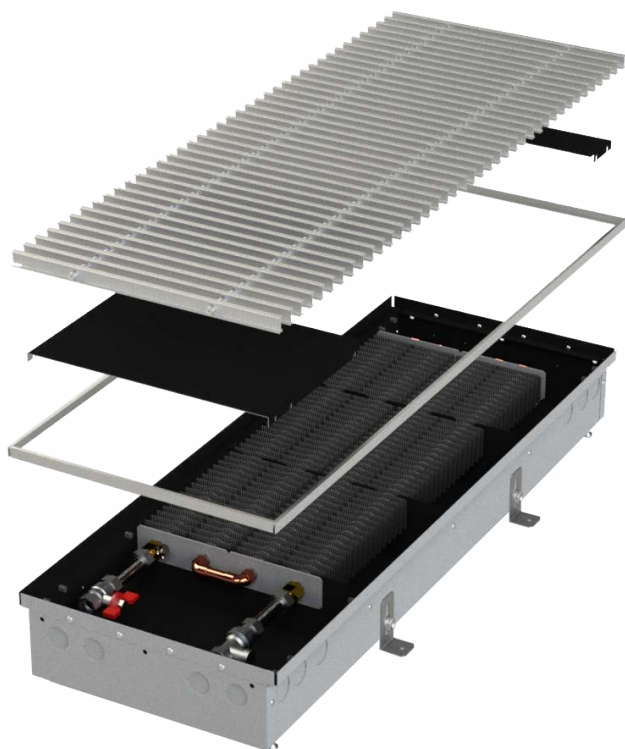


PW 110 / PW 110E

TRENCH HEATER WITH NATURAL CONVECTION
WITH UNIVERSAL CONSTRUCTION



CHARACTERISTICS

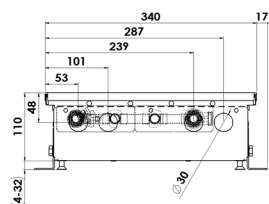
- **STANDARD** - the body of the convector is made from a **high quality stainless steel**
- **ECONOMY LINE / E** - made of **galvanised steel** sheet with internal black coating
- high natural convection
- short response time
- **universal right-left design**
- the new design enables joining the convectors into any long joint

DIMENSIONS

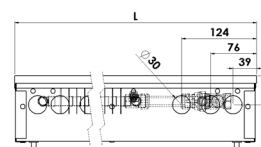
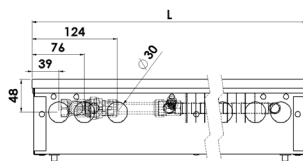
width - with standard frame	340 mm
width - with covering frame	206 mm
height	110 mm
length	900 - 3000 mm
connection *	G1/2"

* internal thread on the heat-exchanger, without water connection accessories

CROSS SECTION



LONGITUDINAL SECTION

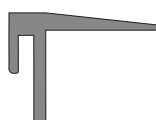


FRAMES

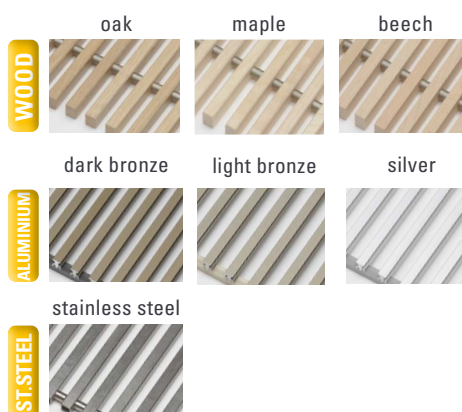
- Standard frame (AL-aluminium)



- Covering frame (AL-aluminium)

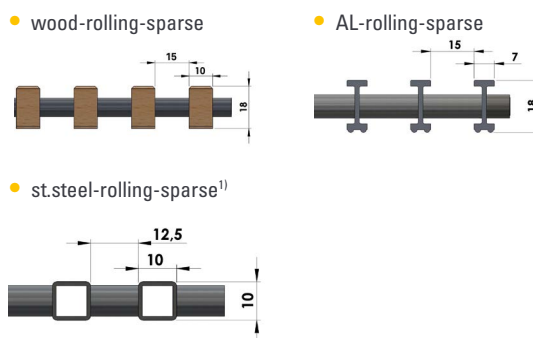


GRILLES - materials



(shades of the grilles are only illustrative)

GRILLES - profile



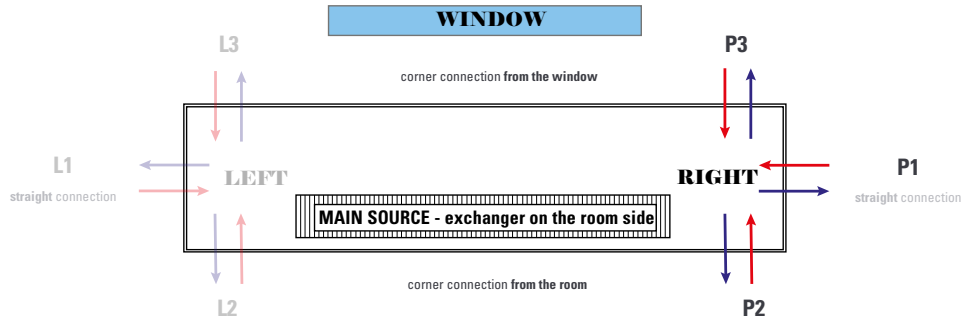
1) the grille must be ordered with the convector due to the modification of the convector construction

Standard grilles are transverse, if you are interested in **LONGITUDINAL GRILLES**, please contact your sales representative.

UNIVERSAL ORIENTATION AND CONNECTION OF THE CONVECTOR

Supplied as a **RIGHT VERSION**, but can be converted to the left version by the customer. In the case of atypical production (joints / corners of convectors) the design is set according to the approved drawing documentation.

If the convector is used as an **additional heat source** which prevents the condensation of the window, the correct position of the exchanger is at the window side. Water connection (**straight R1 / corner R2 or R3**) must be specified with the order of the convector.



HEATING OUTPUT

length L [mm]	heating output Q [W]			
	input / output water temperature [°C]	air temperature tA [°C]		
		15	20	22
09 = 900	85/75	466	419	400
	75/65	373	328	310
	65/55	285	243	227
	45/40	147	112	99
10 = 1000	85/75	544	489	467
	75/65	435	383	362
	65/55	332	284	265
	45/40	171	131	116
12 = 1250	85/75	738	663	634
	75/65	590	519	491
	65/55	451	385	359
	45/40	233	178	157
15 = 1500	85/75	933	838	800
	75/65	745	656	621
	65/55	569	486	454
	45/40	294	225	198
17 = 1750	85/75	1127	1012	967
	75/65	901	792	750
	65/55	688	587	548
	45/40	355	271	239
20 = 2000	85/75	1321	1187	1134
	75/65	1056	929	879
	65/55	806	689	643
	45/40	416	318	281
22 = 2250	85/75	1516	1361	1301
	75/65	1211	1066	1009
	65/55	925	790	737
	45/40	478	365	322
25 = 2500	85/75	1710	1536	1467
	75/65	1366	1202	1138
	65/55	1044	891	832
	45/40	539	412	363
27 = 2750	85/75	1904	1710	1634
	75/65	1522	1339	1267
	65/55	1162	992	926
	45/40	600	458	405
30 = 3000	85/75	2098	1885	1801
	75/65	1677	1475	1397
	65/55	1281	1094	1021
	45/40	661	505	446

EXAMPLE OF ORDER CODE

stainless steel

KPSA U 340 09* 110 41A

galvanised steel

KPSA U 340 09* 110 45A



* length complete according to the specification of the convector

Orientation: U = universal connection

CONNECTION OPTIONS AND ACCESSORIES

- connection **WITHOUT HEAD**
- connection **WITH A THERMOSTATIC HEAD**
- connection **WITH A CUSTOMER HEAD** (after consultation)

The type of connection accessories varies according to the type and purpose of the convector. Connection accessories are packed separately and are not included in the standard convector delivery. Information on request from your sales representative or on our website.

Convectors are designed to the **CONCRETE FLOOR**, in case of **HOLLOW FLOOR** installation, please consult with your sales representative.

The standard delivery includes convector, anchoring accessories and covering grille. All other accessories (connection accessories, control elements, etc.) must be ordered and specified separately.

The technical parameters are set according to the relevant standards. In fact, they may vary depending on the location of the convector, the cover grille, the connection type.

As a part of the product development, MINIB, a.s. reserves the right of construction and price adjustments.

INDIVIDUAL CALCULATION
of technical data you can
find on our website.

