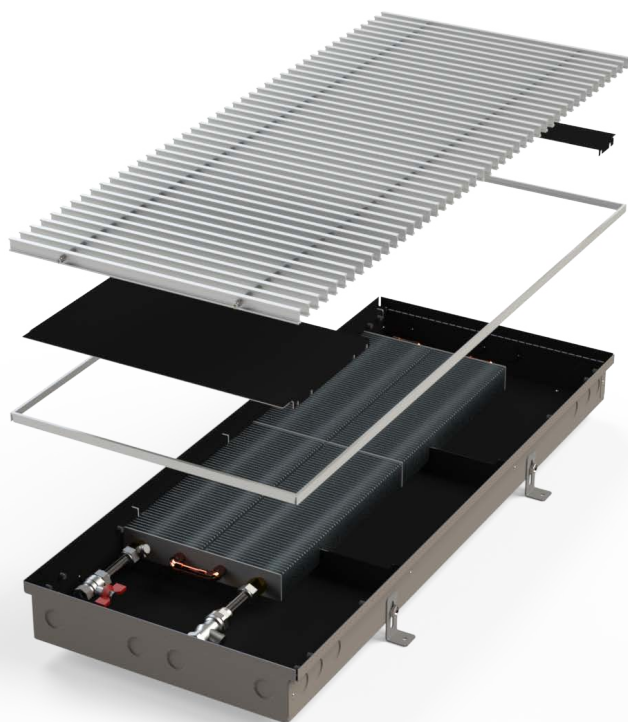


PMW 90 / PMW 90E



TRENCH HEATER WITH NATURAL CONVECTION
WITH UNIVERSAL CONSTRUCTION



CHARACTERISTICS

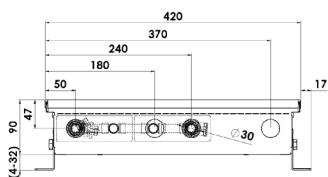
- **STANDARD** - the body of the convector is made from a **high quality stainless steel**
- **ECONOMY LINE / E** - made of **galvanised steel** sheet with internal black coating
- high natural convection
- short response time
- **universal right-left design**
- the new design enables joining the convectors into any long joint

DIMENSIONS

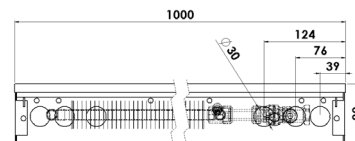
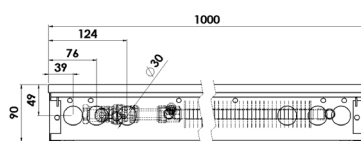
width - with standard frame	420 mm
width - with covering frame	206 mm
height	90 mm
length	900 - 3000 mm
connection *	G1/2"

* internal thread on the heat-exchanger, without water connection accessories

CROSS SECTION



LONGITUDINAL SECTION

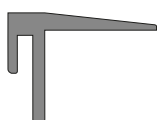


FRAMES

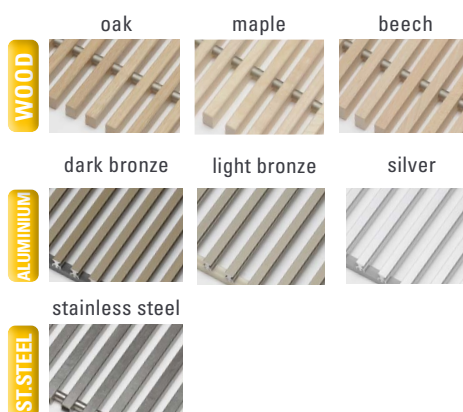
- Standard frame (AL-aluminium)



- Covering frame (AL-aluminium)

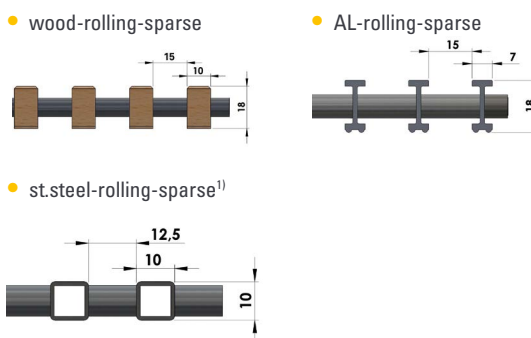


GRILLES - materials



(shades of the grilles are only illustrative)

GRILLES - profile



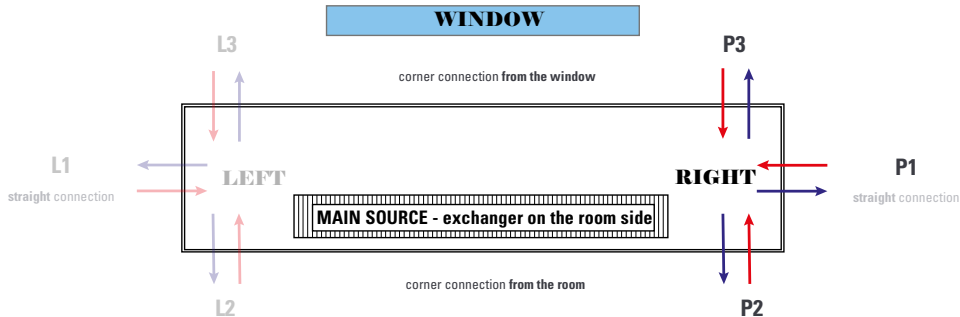
1) the grille must be ordered with the convector due to the modification of the convector construction

Standard grilles are transverse, if you are interested in **LONGITUDINAL GRILLES**, please contact your sales representative.

UNIVERSAL ORIENTATION AND CONNECTION OF THE CONVECTOR

Supplied as a **RIGHT VERSION**, but can be converted to the left version by the customer. In the case of atypical production (joints / corners of convectors) the design is set according to the approved drawing documentation.

If the convector is used as an **additional heat source** which prevents the condensation of the window, the correct position of the exchanger is at the window side. Water connection (**straight R1 / corner R2 or R3**) must be specified with the order of the convector.



HEATING OUTPUT

length L [mm]	heating output Q [W]			
	input / output water temperature [°C]	air temperature tA [°C]		
		15	20	22
09 = 900	85/75	417	372	354
	75/65	328	286	270
	65/55	246	208	193
	45/40	121	91	79
10 = 1000	85/75	487	434	413
	75/65	383	334	315
	65/55	287	242	225
	45/40	141	106	93
12 = 1250	85/75	661	589	561
	75/65	520	453	427
	65/55	389	329	305
	45/40	192	144	126
15 = 1500	85/75	835	744	709
	75/65	656	572	540
	65/55	492	415	386
	45/40	242	181	159
17 = 1750	85/75	1009	899	856
	75/65	793	691	652
	65/55	594	502	466
	45/40	293	219	192
20 = 2000	85/75	1183	1054	1004
	75/65	930	811	764
	65/55	697	588	546
	45/40	343	257	225
22 = 2250	85/75	1356	1209	1151
	75/65	1067	930	877
	65/55	799	675	627
	45/40	393	295	258
25 = 2500	85/75	1530	1364	1299
	75/65	1203	1049	989
	65/55	902	761	707
	45/40	444	333	291
27 = 2750	85/75	1704	1519	1447
	75/65	1340	1168	1102
	65/55	1004	847	787
	45/40	494	370	324
30 = 3000	85/75	1878	1674	1594
	75/65	1477	1288	1214
	65/55	1106	934	868
	45/40	545	408	357

EXAMPLE OF ORDER CODE

stainless steel

KPSA U 420 09* 090 41A

galvanised steel

KPSA U 420 09* 090 45A



* length complete according to the specification of the convector

Orientation: U = universal connection

CONNECTION OPTIONS AND ACCESSORIES

- connection **WITHOUT HEAD**
- connection **WITH A THERMOSTATIC HEAD**
- connection **WITH A CUSTOMER HEAD** (after consultation)

The type of connection accessories varies according to the type and purpose of the convector. Connection accessories are packed separately and are not included in the standard convector delivery. Information on request from your sales representative or on our website.

Convectors are designed to the **CONCRETE FLOOR**, in case of **HOLLOW FLOOR** installation, please consult with your sales representative.

The standard delivery includes convector, anchoring accessories and standard frame. All other accessories (grille, connection accessories, control elements, etc.) must be ordered and specified separately.

The technical parameters are set according to the relevant standards. In fact, they may vary depending on the location of the convector, the cover grille, the connection type.

As a part of the product development, MINIB, a.s. reserves the right of construction and price adjustments.

INDIVIDUAL CALCULATION
of technical data you can
find on our website.

