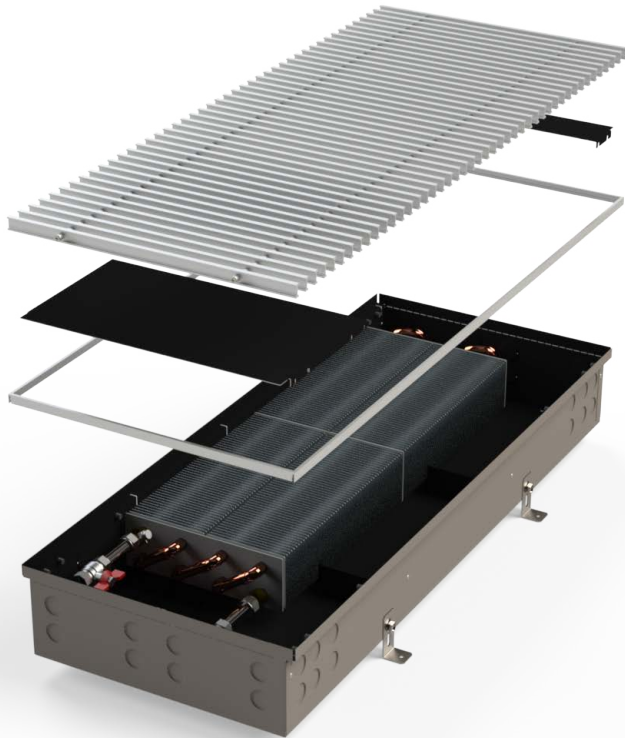


PMW 140 / PMW 140E



TRENCH HEATER WITH NATURAL CONVECTION
WITH UNIVESRAL CONSTRUCTION



CHARACTERISTICS

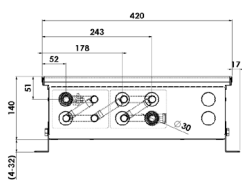
- **STANDARD** - the body of the convector is made from a **high quality stainless steel**
- **ECONOMY LINE / E** - made of **galvanised steel** sheet with internal black coating
- high natural convection
- short response time
- **universal right-left design**
- the new design enables joining the convectors into any long joint

DIMENSIONS

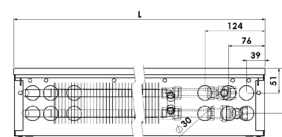
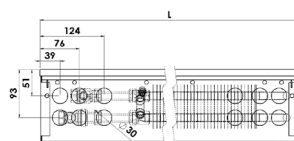
width - with standard frame	420 mm
width - with covering frame	206 mm
height	140 mm
length	900 - 3000 mm
connection *	G1/2"

* internal thread on the heat-exchanger, without water connection accessories

CROSS SECTION



LONGITUDINAL SECTION

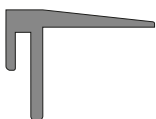


FRAMES

- Standard frame (AL-aluminium)



- Covering frame (AL-aluminium)

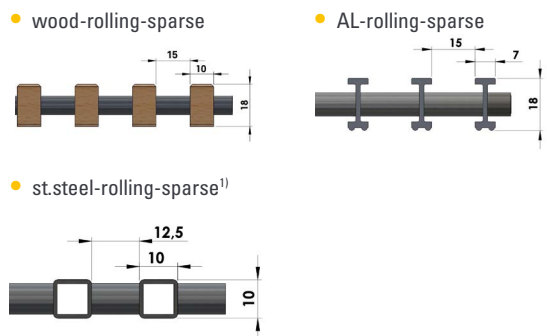


GRILLES - materials



(shades of the grilles are only illustrative)

GRILLES - profile



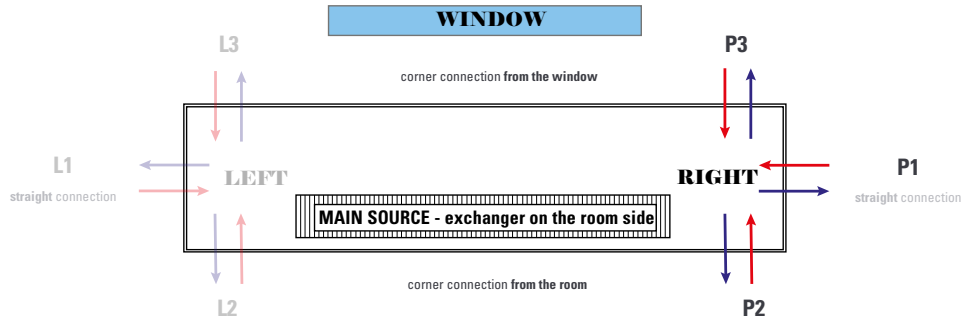
1) the grille must be ordered with the convector due to the modification of the convector construction

Standard grilles are transverse, if you are interested in **LONGITUDINAL GRILLES**, please contact your sales representative.

UNIVERSAL ORIENTATION AND CONNECTION OF THE CONVECTOR

Supplied as a **RIGHT VERSION**, but can be converted to the left version by the customer. In the case of atypical production (joints / corners of convectors) the design is set according to the approved drawing documentation.

If the convector is used as an **additional heat source** which prevents the condensation of the window, the correct position of the exchanger is at the window side. Water connection (**straight R1 / corner R2 or R3**) must be specified with the order of the convector.



HEATING OUTPUT

length L [mm]	heating output Q [W]			
	input / output water temperature [°C]	air temperature tA [°C]		
		15	20	22
09 = 900	85/75	714	638	608
	75/65	565	494	467
	65/55	426	361	336
	45/40	214	161	142
10 = 1000	85/75	833	744	710
	75/65	659	576	544
	65/55	497	422	392
	45/40	249	188	165
12 = 1250	85/75	1130	1010	963
	75/65	894	782	739
	65/55	675	572	533
	45/40	339	256	224
15 = 1500	85/75	1427	1276	1217
	75/65	1129	988	933
	65/55	853	723	673
	45/40	428	323	283
17 = 1750	85/75	1725	1542	1470
	75/65	1365	1194	1128
	65/55	1030	874	813
	45/40	517	390	342
20 = 2000	85/75	2022	1807	1724
	75/65	1600	1400	1322
	65/55	1208	1024	953
	45/40	606	457	401
22 = 2250	85/75	2319	2073	1977
	75/65	1835	1606	1517
	65/55	1386	1175	1093
	45/40	695	525	460
25 = 2500	85/75	2617	2339	2231
	75/65	2071	1812	1711
	65/55	1563	1325	1233
	45/40	784	592	520
27 = 2750	85/75	2914	2605	2484
	75/65	2306	2018	1905
	65/55	1741	1476	1374
	45/40	873	659	579
30 = 3000	85/75	3211	2871	2737
	75/65	2541	2224	2100
	65/55	1918	1627	1514
	45/40	962	726	638

EXAMPLE OF ORDER CODE

stainless steel

KPSA U 420 09* 140 81A

galvanised steel

KPSA U 420 09* 140 85A



* length complete according to the specification of the convector

Orientation: U = universal connection

CONNECTION OPTIONS AND ACCESSORIES

- connection **WITHOUT HEAD**
- connection **WITH A THERMOSTATIC HEAD**
- connection **WITH A CUSTOMER HEAD** (after consultation)

The type of connection accessories varies according to the type and purpose of the convector. Connection accessories are packed separately and are not included in the standard convector delivery. Information on request from your sales representative or on our website.

Convectors are designed to the **CONCRETE FLOOR**, in case of **HOLLOW FLOOR** installation, please consult with your sales representative.

The standard delivery includes convector, anchoring accessories and standard frame. All other accessories (grille, connection accessories, control elements, etc.) must be ordered and specified separately.

The technical parameters are set according to the relevant standards. In fact, they may vary depending on the location of the convector, the cover grille, the connection type.

As a part of the product development, MINIB, a.s. reserves the right of construction and price adjustments.

INDIVIDUAL CALCULATION
of technical data you can
find on our website.

