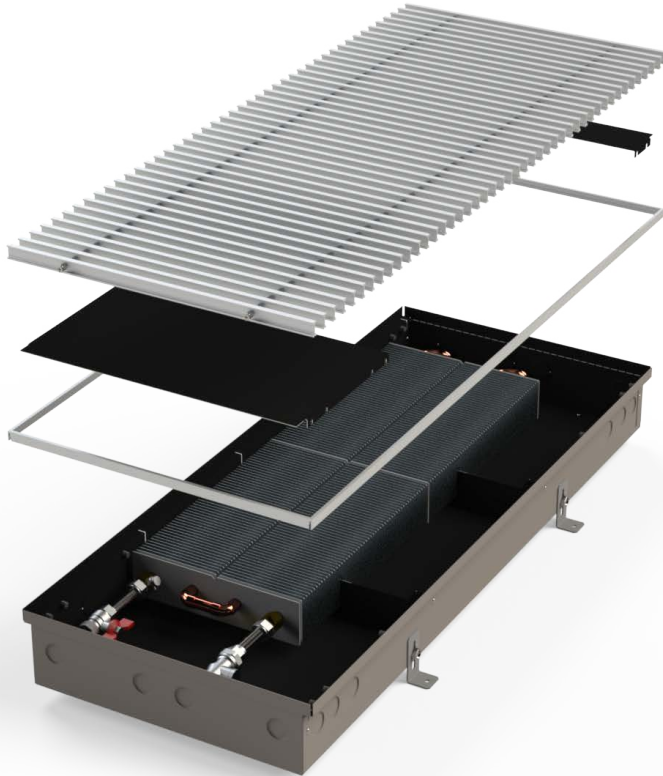
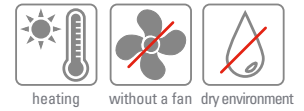


PMW 110 / PMW 110E



TRENCH HEATER WITH NATURAL CONVECTION
WITH UNIVESRAL CONSTRUCTION



CHARACTERISTICS

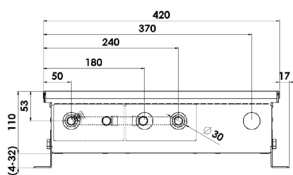
- **STANDARD** - the body of the convector is made from a **high quality stainless steel**
- **ECONOMY LINE / E** - made of **galvanised steel** sheet with internal black coating
- high natural convection
- short response time
- **universal right-left design**
- the new design enables joining the convectors into any long joint

DIMENSIONS

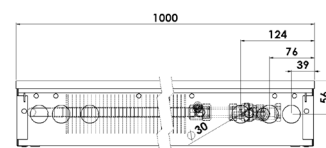
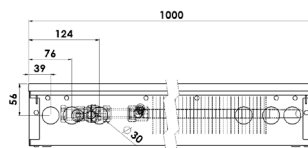
width - with standard frame	420 mm
width - with covering frame	206 mm
height	110 mm
length	900 - 3000 mm
connection *	G1/2"

* internal thread on the heat-exchanger, without water connection accessories

CROSS SECTION



LONGITUDINAL SECTION

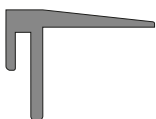


FRAMES

- Standard frame (AL-aluminium)



- Covering frame (AL-aluminium)

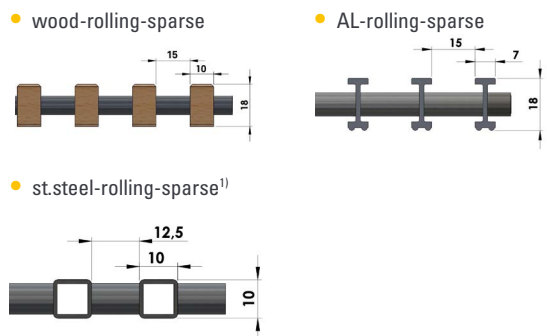


GRILLES - materials



(shades of the grilles are only illustrative)

GRILLES - profile



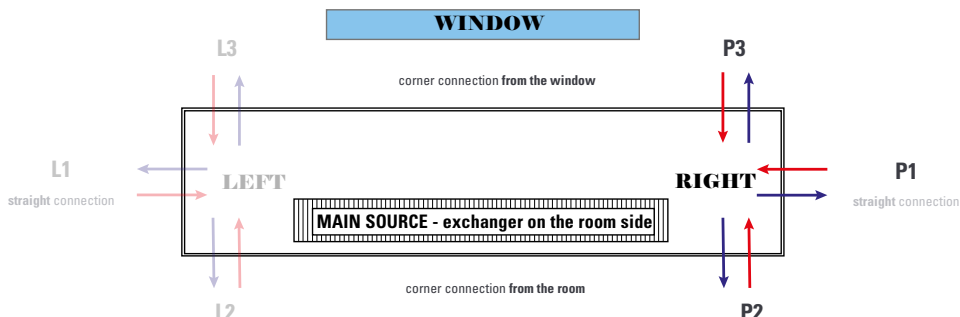
1) the grille must be ordered with the convector due to the modification of the convector construction

Standard grilles are transverse, if you are interested in **LONGITUDINAL GRILLES**, please contact your sales representative.

UNIVERSAL ORIENTATION AND CONNECTION OF THE CONVECTOR

Supplied as a **RIGHT VERSION**, but can be converted to the left version by the customer. In the case of atypical production (joints / corners of convectors) the design is set according to the approved drawing documentation.

If the convector is used as an **additional heat source** which prevents the condensation of the window, the correct position of the exchanger is at the window side. Water connection (**straight R1 / corner R2 or R3**) must be specified with the order of the convector.



HEATING OUTPUT

length L [mm]	heating output Q [W]			
	input / output water temperature [°C]	air temperature tA [°C]		
		15	20	22
09 = 900	85/75	562	503	479
	75/65	445	390	369
	65/55	337	286	267
	45/40	170	129	113
10 = 1000	85/75	655	586	559
	75/65	520	455	430
	65/55	393	334	311
	45/40	199	150	132
12 = 1250	85/75	889	796	759
	75/65	705	618	584
	65/55	534	453	422
	45/40	270	204	179
15 = 1500	85/75	1123	1005	959
	75/65	891	781	738
	65/55	674	573	533
	45/40	341	258	227
17 = 1750	85/75	1357	1214	1159
	75/65	1076	943	891
	65/55	815	692	645
	45/40	412	312	274
20 = 2000	85/75	1591	1424	1358
	75/65	1262	1106	1045
	65/55	955	811	756
	45/40	483	365	321
22 = 2250	85/75	1825	1633	1558
	75/65	1448	1268	1199
	65/55	1096	931	867
	45/40	554	419	368
25 = 2500	85/75	2059	1843	1758
	75/65	1633	1431	1352
	65/55	1236	1050	978
	45/40	625	473	416
27 = 2750	85/75	2293	2052	1958
	75/65	1819	1594	1506
	65/55	1377	1169	1089
	45/40	696	527	463
30 = 3000	85/75	2527	2261	2158
	75/65	2004	1756	1660
	65/55	1517	1289	1200
	45/40	767	580	510

EXAMPLE OF ORDER CODE

stainless steel

KPSA U 420 09* 110 41A

galvanised steel

KPSA U 420 09* 110 45A



* length complete according to the specification of the convector

Orientation: U = universal connection

CONNECTION OPTIONS AND ACCESSORIES

- connection **WITHOUT HEAD**
- connection **WITH A THERMOSTATIC HEAD**
- connection **WITH A CUSTOMER HEAD** (after consultation)

The type of connection accessories varies according to the type and purpose of the convector. Connection accessories are packed separately and are not included in the standard convector delivery. Information on request from your sales representative or on our website.

Convectors are designed to the **CONCRETE FLOOR**, in case of **HOLLOW FLOOR** installation, please consult with your sales representative.

The standard delivery includes convector, anchoring accessories and standard frame. All other accessories (grille, connection accessories, control elements, etc.) must be ordered and specified separately.

The technical parameters are set according to the relevant standards. In fact, they may vary depending on the location of the convector, the cover grille, the connection type.

As a part of the product development, MINIB, a.s. reserves the right of construction and price adjustments.

INDIVIDUAL CALCULATION
of technical data you can
find on our website.

