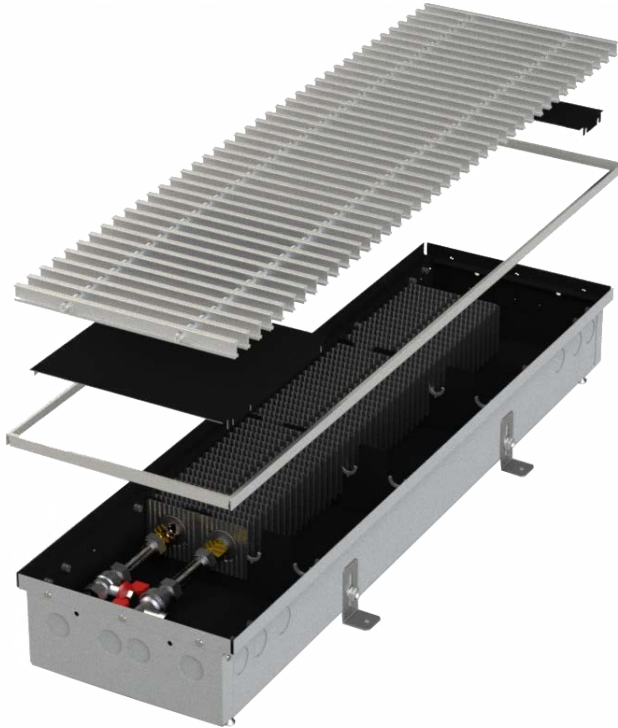


PM 110 / PM 110E

TRENCH HEATER WITH NATURAL CONVECTION
WITH UNIVESRAL CONSTRUCTION



CHARACTERISTICS

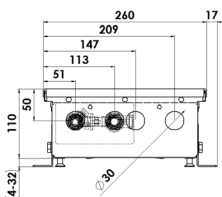
- **STANDARD** - the body of the convector is made from a **high quality stainless steel**
- **ECONOMY LINE / E** - made of **galvanised steel** sheet with internal black coating
- high natural convection
- short response time
- **universal right-left design**
- the new design enables joining the convectors into any long joint

DIMENSIONS

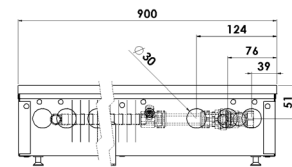
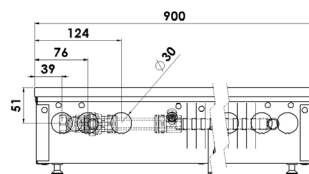
width - with standard frame	260 mm
width - with covering frame	206 mm
height	110 mm
length	900 - 3000 mm
connection *	G1/2"

* internal thread on the heat-exchanger, without water connection accessories

CROSS SECTION



LONGITUDINAL SECTION

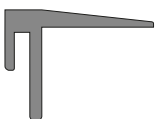


FRAMES

- Standard frame (AL-aluminium)



- Covering frame (AL-aluminium)

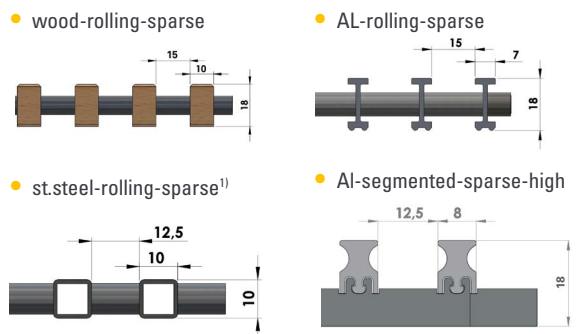


GRILLES - materials



(shades of the grilles are only illustrative)

GRILLES - profile



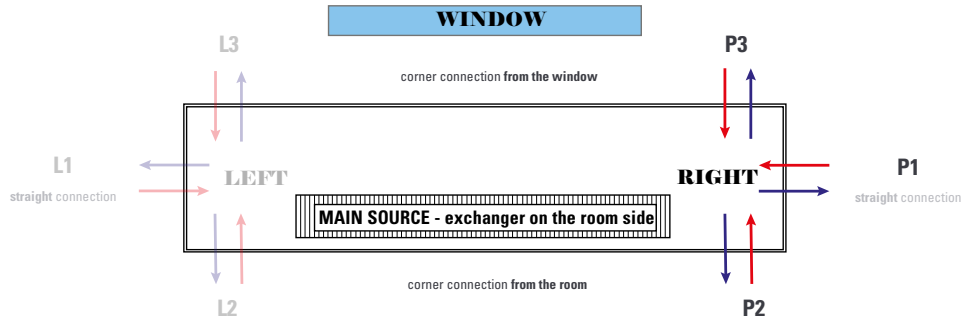
1) the grille must be ordered with the convector due to the modification of the convector construction

Standard grilles are transverse, if you are interested in **LONGITUDINAL GRILLES**, please contact your sales representative.

UNIVERSAL ORIENTATION AND CONNECTION OF THE CONVECTOR

Supplied as a **RIGHT VERSION**, but can be converted to the left version by the customer. In the case of atypical production (joints / corners of convectors) the design is set according to the approved drawing documentation.

If the convector is used as an **additional heat source** which prevents the condensation of the window, the correct position of the exchanger is at the window side. Water connection (**straight R1 / corner R2 or R3**) must be specified with the order of the convector.



HEATING OUTPUT

length L [mm]	heating output Q [W]			
	input / output water temperature [°C]	air temperature tA [°C]		
		15	20	22
09 = 900	85/75	353	316	301
	75/65	280	245	232
	65/55	212	180	168
	45/40	107	81	71
10 = 1000	85/75	412	368	351
	75/65	326	286	270
	65/55	247	210	195
	45/40	125	95	83
12 = 1250	85/75	559	500	477
	75/65	443	388	367
	65/55	335	285	265
	45/40	169	128	113
15 = 1500	85/75	705	631	602
	75/65	560	490	463
	65/55	424	360	335
	45/40	214	162	142
17 = 1750	85/75	852	763	728
	75/65	676	592	560
	65/55	512	435	405
	45/40	259	196	172
20 = 2000	85/75	999	894	853
	75/65	793	695	656
	65/55	600	510	475
	45/40	303	230	202
22 = 2250	85/75	1146	1026	979
	75/65	909	797	753
	65/55	688	585	545
	45/40	348	263	231
25 = 2500	85/75	1293	1157	1104
	75/65	1026	899	849
	65/55	777	660	614
	45/40	392	297	261
27 = 2750	85/75	1440	1289	1230
	75/65	1143	1001	946
	65/55	865	735	684
	45/40	437	331	291
30 = 3000	85/75	1587	1421	1355
	75/65	1259	1103	1042
	65/55	953	810	754
	45/40	481	365	320

EXAMPLE OF ORDER CODE

stainless steel

KPSA U 260 09* 110 21A

galvanised steel

KPSA U 260 09* 110 25A



* length complete according to the specification of the convector

Orientation: U = universal connection

CONNECTION OPTIONS AND ACCESSORIES

- connection **WITHOUT HEAD**
- connection **WITH A THERMOSTATIC HEAD**
- connection **WITH A CUSTOMER HEAD** (after consultation)

The type of connection accessories varies according to the type and purpose of the convector. Connection accessories are packed separately and are not included in the standard convector delivery. Information on request from your sales representative or on our website.

Convectors are designed to the **CONCRETE FLOOR**, in case of **HOLLOW FLOOR** installation, please consult with your sales representative.

The standard delivery includes convector, anchoring accessories and standard frame. All other accessories (grille, connection accessories, control elements, etc.) must be ordered and specified separately.

The technical parameters are set according to the relevant standards. In fact, they may vary depending on the location of the convector, the cover grille, the connection type.

As a part of the product development, MINIB, a.s. reserves the right of construction and price adjustments.

INDIVIDUAL CALCULATION of technical data you can find on our website.

