

PB 110 / PB 110E

TRENCH HEATER WITH NATURAL CONVECTION
WITH UNIVESRAL CONSTRUCTION



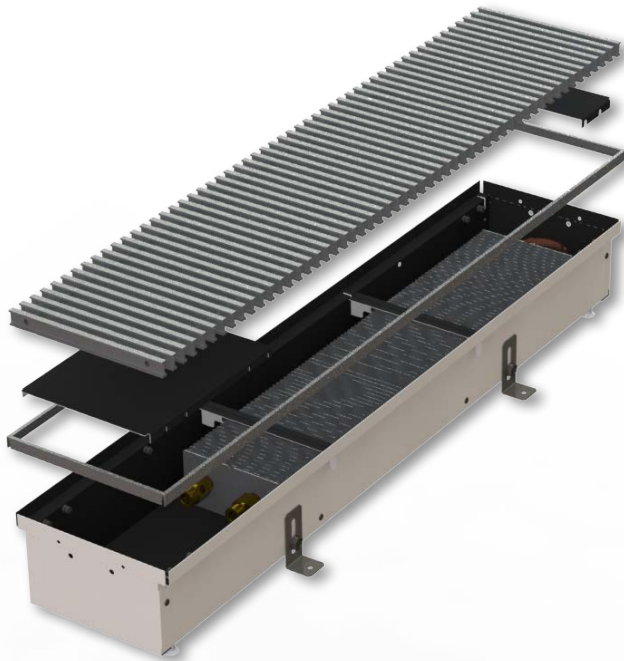
CHARACTERISTICS

- **STANDARD** - the body of the convector is made from a **high quality stainless steel**
- **E** - made of **galvanised steel** sheet with internal black coating
- high natural convection
- short response time
- **universal right-left design**
- the new design enables joining the convectors into any long joint

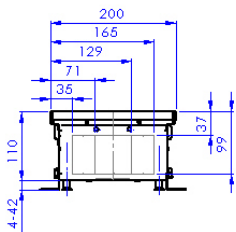
DIMENSIONS

width - with standard frame	200 mm
width - with covering frame	226 mm
height	110 mm
length ¹⁾	900 - 3000 mm
connection ²⁾	G1/2"

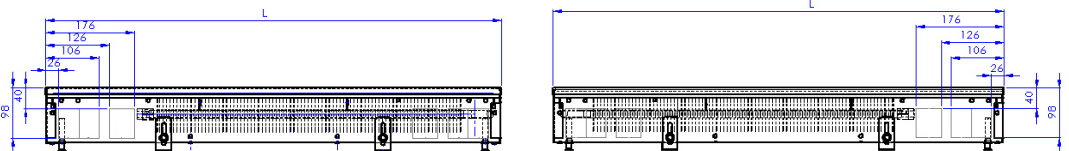
* internal thread on the heat-exchanger, without water connection accessories



CROSS SECTION



LONGITUDINAL SECTION

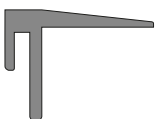


FRAMES

- Standard frame (AL-aluminium)



- Covering frame (AL-aluminium)

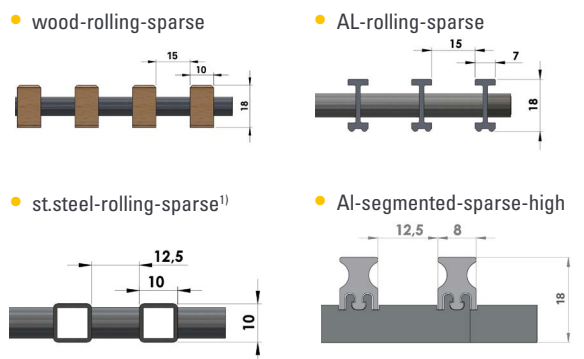


GRILLES - materials



(shades of the grilles are only illustrative)

GRILLES - profile



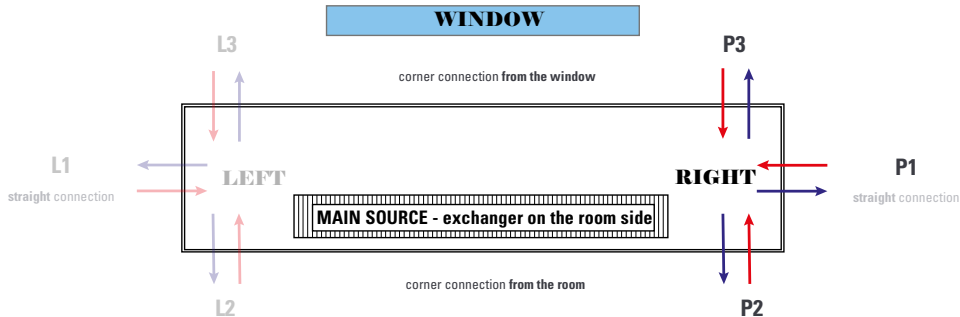
1) the grille must be ordered with the convector due to the modification of the convector construction

Standard grilles are transverse, if you are interested in **LONGITUDINAL GRILLES**, please contact your sales representative.

UNIVERSAL ORIENTATION AND CONNECTION OF THE CONVECTOR

Supplied as a **RIGHT VERSION**, but can be converted to the left version by the customer. In the case of atypical production (joints / corners of convectors) the design is set according to the approved drawing documentation.

If the convector is used as an **additional heat source** which prevents the condensation of the window, the correct position of the exchanger is at the window side. Water connection (**straight R1 / corner R2 or R3**) must be specified with the order of the convector.



HEATING OUTPUT

length L [mm]	heating output Q [W]			
	input / output water temperature [°C]	air temperature tA [°C]		
		15	20	22
09 = 900	85/75	265	237	226
	75/65	210	184	174
	65/55	159	135	126
	45/40	80	61	53
10 = 1000	85/75	309	277	264
	75/65	245	215	203
	65/55	186	158	147
	45/40	94	71	62
12 = 1250	85/75	419	375	358
	75/65	333	291	275
	65/55	252	214	199
	45/40	127	96	85
15 = 1500	85/75	530	474	452
	75/65	420	368	348
	65/55	318	270	252
	45/40	161	122	107
17 = 1750	85/75	640	573	547
	75/65	508	445	420
	65/55	384	326	304
	45/40	194	147	129
20 = 2000	85/75	750	672	641
	75/65	595	522	493
	65/55	451	383	356
	45/40	228	172	151
22 = 2250	85/75	861	770	735
	75/65	683	598	565
	65/55	517	439	409
	45/40	261	198	174
25 = 2500	85/75	971	869	829
	75/65	770	675	638
	65/55	583	495	461
	45/40	295	223	196
27 = 2750	85/75	1082	968	924
	75/65	858	752	710
	65/55	650	552	514
	45/40	328	248	218
30 = 3000	85/75	1192	1067	1018
	75/65	945	828	783
	65/55	716	608	566
	45/40	362	274	241

EXAMPLE OF ORDER CODE

stainless steel

KPSA U 200 09* 110 21A

galvanised steel

KPSA U 200 09* 110 25A



* length complete according to the specification of the convector

Orientation: U = universal connection

CONNECTION OPTIONS AND ACCESSORIES

- connection **WITHOUT HEAD**
- connection **WITH A THERMOSTATIC HEAD**
- connection **WITH A CUSTOMER HEAD** (after consultation)

The type of connection accessories varies according to the type and purpose of the convector. Connection accessories are packed separately and are not included in the standard convector delivery. Information on request from your sales representative or on our website.

Convectors are designed to the **CONCRETE FLOOR**, in case of **HOLLOW FLOOR** installation, please consult with your sales representative.

The standard delivery includes convector, anchoring accessories and standard frame. All other accessories (grille, connection accessories, control elements, etc.) must be ordered and specified separately.

The technical parameters are set according to the relevant standards. In fact, they may vary depending on the location of the convector, the cover grille, the connection type.

As a part of the product development, MINIB, a.s. reserves the right of construction and price adjustments.

INDIVIDUAL CALCULATION of technical data you can find on our website.

