



-----  
*Welcome back to the  
wonderful world of model  
aeroplane flying*  
-----

Dear Fellow Firebirds Club Members

No need for a great big long Newsletter anymore, we can all meet up down the field for a chat! Happy days...

If you do have something for the Newsletter please do let me have it.

See you down the field

Chris.

### **Dave, Better News ...**

Dave Hoppe our Vice Chairman, long term member and good friend has shown much improvement from the news posted last month.

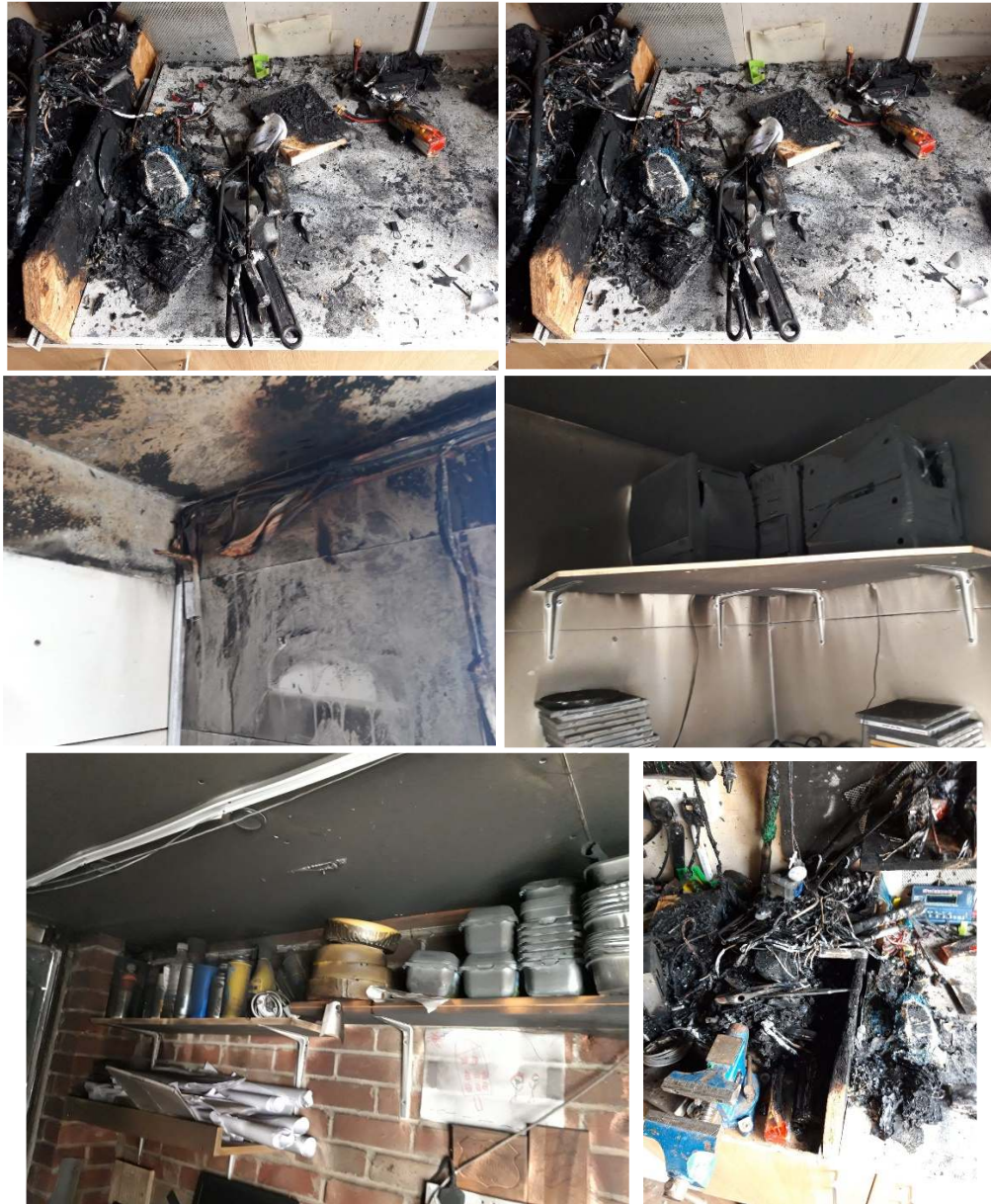
Dave even made a comment on the shared KIK group.. the single word "Bastards!" when referring to the fact that some of us were going down the field to fly when he couldn't. That one word represents a definite move in the right direction.

Hurry up and get better Dave we need you back down the field.



**IMPORTANT MESSAGE.** — *Pictures courtesy of Pete Clarke...*

Be careful how and where you charge your Li-po batteries, one of our members had to clear up this mess last month. Warning Li-po batteries DO catch fire.



Thankfully nobody was hurt and the workshop is now being repaired.







**AND ON THAT NOTE:** *by Rob Cope*

## Garden Charging

Owing to recent events, I feel I should share an idea for charging LiPo batteries. Partly because I have no room and partly because of safety worries, I have developed this arrangement. It might help others and can certainly be improved upon. This arrangement is, I believe, (no guarantees at all - all at user's own risk) vaguely rain-proof (but not monsoon-proof.)

### You will need these:

1. An outside concrete area as described.
2. A steel or aluminium sheet 2mm+ thick; 500mm square or larger, or a loose paving slab upside down, etc.
3. Two house bricks or similar inert blocks
4. A blue sandpit container - available for about £10 (or recover from grandchildren when they're upgrading theirs)
5. A 6-way mains block (preferably with individual switches to save the planet a fraction)
6. 6 x cheap Chinese 2s/3s chargers (about £36 total) or similar devices of your choice

i) Choose a wall or other concrete garden installation that is at least 1 foot wide and 5 foot long. It could be part of a larger flat area. Choose somewhere where nobody will trip on it in the dark. Assemble two bricks as shown



ii) Run the earth-leakage-trip extensions lead out of the shed to the first brick. I lead it through a suitable groove in the door gap so that the door can be closed. You can always make a groove.



Install the aluminium sheet or paving slab just beyond. Plug in the 6-way and rest on the next brick. Plug in the chargers.





iii) Plug in the batteries and switch it all on.

iv) Cover the whole contraption in the sand pit shell. This prevents overheating in the sun. It also keeps drizzle or light rain off in still air.



Obviously, this is not suitable in conditions where the wind might blow the said pit around if there's any chance of rain, or there is strong sun.

I guess more bricks or a further slab could be used to weight it down.



## Notes on the implementation.

- A) The shell must cover all except trailing leads so that rain cannot run down the leads into any of the devices.
- B) The electrical items must all be lifted off the ground surface so that surface water cannot possibly find its way in.
- C) The fused earth-leakage-trip extension lead should provide the first line of safety should anything untoward happen.
- D) In the worst case, be prepared for the shell and all outside electrics involved to be damaged should there be a problem.
- E) I make no guarantees about this arrangement. It is simply what I use.

Thanks Rob, anybody else want to share their methods for keeping their houses safe while charging their Li-po's? My method is very simple (below), but I am sure very flawed? (Ed.)



Pete's advice is DO NOT leave charging batteries unattended.





## DOWN AT THE FIELD



One member has decided to send me picture of myself..  
(I had better learn to look less grumpy!)



Rob Flies his Acrowat — *picture courtesy of Paul*

Notice the lack of an undercarriage? Rob decided to remove the undercarriage during an earlier flight (landing) so wanted to try the model without the wheels, the model flew well both with and without.



Like Rob, Kevin tried removing his undercarriage during a 'landing', but alas in this case the undercarriage remained in place, I think you need to try harder Kevin.



Pete had been estranged from this model for many years as he sold it at one of the club auctions. The member that bought the model (Ed.) never flew it and then sold it back to Pete.

Pete flew it this month, his first flight this year!



Geoff is one very special model maker, although too big to be flown at our field, Geoff brought this huge model along to try and get the 7 cylinder radial engine going.

## HOW DOES A RADIAL ENGINE WORK ?

\* VIDEO LINK >>>\* <https://youtu.be/qjnQKXNPsk4>





## Model Air Shows are back



26th & 27th June 2021 - Nr Epping, Essex, CM16 6HR. <https://www.wingsnwheels.net/>



Reduced show (Camping only) June 2021

Full show September the 3rd to the 5th.

Nr Shifnal, Shropshire, TF11 8LE <http://www.westonparkmodelairshow.co.uk/>

## **Flying times:**

Monday	Tuesday	Wednesday	Thursday	Friday	Saturday	Sunday
<i>Quiet (Electric)</i>	<i>Electric and I/C</i>		<i>Electric and I/C</i>		<i>Electric and I/C</i>	<i>Electric and I/C</i>
14-00	12-00	NO FLYING	12-00	NO FLYING	10-00	10-00
20-00 or dusk*	16-00		16-00		14-00	13-00

**\* NO NIGHT FLYING**

## Poorly club member

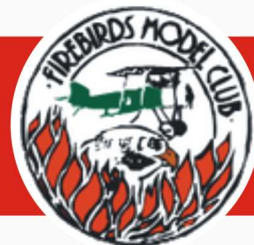
Continuing thoughts and good wishes from the committee to all poorly members.

## FUTURE CLUB NIGHTS - Advance notice

ALL \*\* Postponed \*\* due to Covid 19 restrictions.

# Firebirds Model Club

News, Views & Information - June 2021



## Club Information

This section gives a summary of club services and contact details.

### Glow Fuel, Glue and other bits and pieces available

Fuel is available through the club and supplies are held by the club. All grades of fuel are available to order. Russell holds many other useful items: glo-plugs, propellers, glue, fuel tubing, wing bolts etc.

Russell Lewis

023 8056 1397

[russell@pilot1.co.uk](mailto:russell@pilot1.co.uk)

## Club Meetings

Our meeting venue is the Hamble Club at this address:

Beaulieu Road  
Hamble, Southampton,  
Hampshire, SO31 4JL



The Club requires each member to sign in at every arrival using the book usually kept at the bar. There is a way round this and that is to join the club. This is not expensive, particularly for OAPs who pay £8.00 for the first year, and if you live locally it provides a cheap night out!

## External Events

If you need more details on any particular event, then go to <https://bmfa.org/Contests-Events/Contest-and-Event-Calendar>. **BMFA Bulletins are available on-line at this [link](#) ...**

## Firebirds Model Club Committee

The following are the contact details for the Committee. Each has given permission for their phone number and email addresses to be included in this Newsletter.

Chairman	Russell Lewis	023 8056 1397	<a href="mailto:russell@pilot1.co.uk">russell@pilot1.co.uk</a>
Vice Chair	Dave Hoppe	07704 826343	<a href="mailto:davehoppehome@gmail.com">davehoppehome@gmail.com</a>
Treasurer	Alan Shergold	07973 221915	<a href="mailto:alanshergold@hotmail.co.uk">alanshergold@hotmail.co.uk</a>
Secretary	Rob Cope	07795 996549	<a href="mailto:copes02@ntlworld.com">copes02@ntlworld.com</a>
PRO	Peter Clark	07867 557964	<a href="mailto:psclark911@hotmail.com">psclark911@hotmail.com</a>
Flying Site Rep.	Vacancy		
Safety Officer	Geoff Griffiths	023 9265 5931	<a href="mailto:gcgriffiths@hotmail.com">gcgriffiths@hotmail.com</a>
Membership Sec.	Keith Warwick	07887 486040	<a href="mailto:keithw11@hotmail.co.uk">keithw11@hotmail.co.uk</a>

## Firebirds Constitution and Rules.

The Firebirds constitution and rules document can be found at the bottom of the 'about us' section on the web-site or by clicking the following link.

<http://firebirds.org.uk/onewebmedia/FIREBIRD%20CONSTITUTION%20%26%20RULES.pdf>.

**Remember... Safe flying is no accident.**