

ASB | 2024

CHARGERS

TRAINING





POWERED BY  
**coolcore**<sup>®</sup>

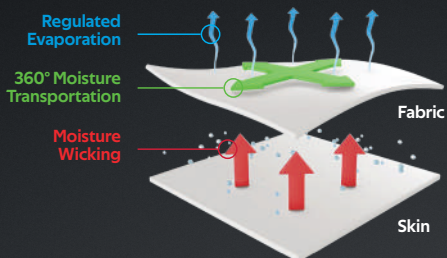




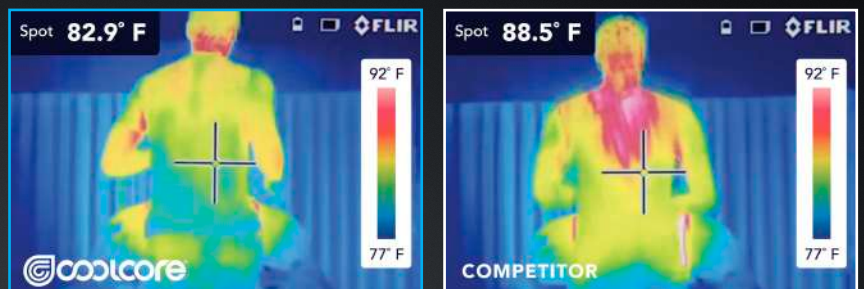
POWERED BY  
**Coolcore®**

Coolcore® fabric is engineered to distribute moisture quickly throughout the garment. As the moisture spreads it dries faster to keep you cool and comfortable, and has UPF 50 sun protection.

### Patented Fabric Technology



### Technology Comparison



The same athlete after 20 minutes of activity



Tri-tourney

Watercolor  
Camo II



**FREESTYLE SUBLIMATED  
TURBO TRAINING TEE**

<b>228180</b>	Adult	S-4XL	MSRP 36.00
<b>228280</b>	Youth	S-XL	MSRP 36.00
<b>228380</b>	Ladies	S-3XL	MSRP 36.00
<b>228480</b>	Girls	S-XL	MSRP 36.00

228380

Tri-Tourney



2430

228180

Cutter



1420



Chevron

Chevron



**FREESTYLE SEMI SUBLIMATED  
SHORT SLEEVE RAGLAN TEE**

<b>525080</b>	Adult	S-3XL	MSRP 24.80
<b>625080</b>	Youth	S-XL	MSRP 24.80
<b>725080</b>	Ladies	XS-2XL	MSRP 24.80



For available design lines visit  
[augustasportswear.com/sublimation](http://augustasportswear.com/sublimation)



Gradient

228378

Watercolor  
Camo

Gradient



229389

228178

Tie Dye



229511

# ULTRA SOFT COTTONY FEEL!



FREESTYLE  
 SUBLIMATED TURBO  
 COTTON-TOUCH POLY TEE

**228178** Adult  
 S-4XL MSRP 44.30  
**228278** Youth  
 S-XL MSRP 44.30



LADIES FREESTYLE  
 SUBLIMATED TURBO  
 COTTON-TOUCH POLY TEE

**228378** Ladies  
 S-3XL MSRP 44.30



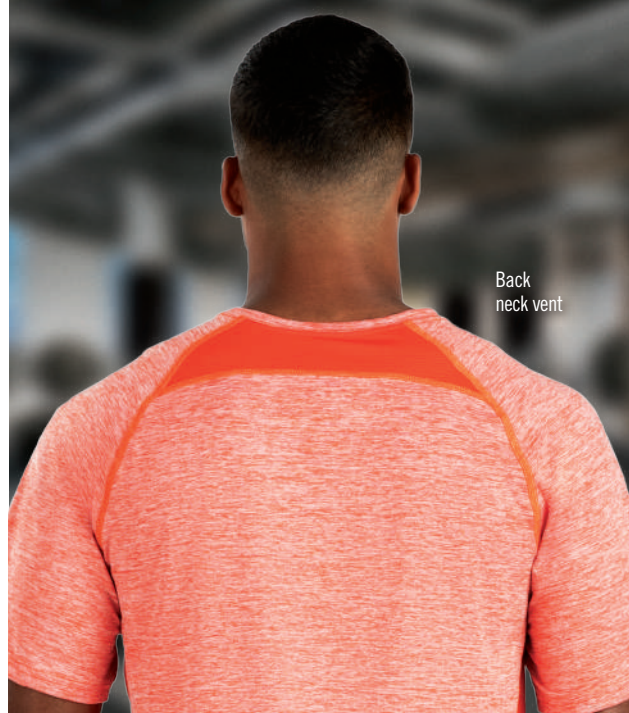
**ELECTRIFY COOLCORE®  
COLLECTION**

**ELECTRIFY TEE POWERED  
BY COOLCORE®**



<b>222571</b>	Adult	S-3XL	MSRP 36.00
<b>222671</b>	Youth	S-XL	MSRP 36.00
<b>222771</b>	Ladies	XS-2XL	MSRP 36.00

- 87% polyester/13% elastane heathered wicking knit with Coolcore® fabric technology
- 92% polyester knitted mesh/8% elastane wicking knit with Coolcore® fabric technology
- Garment protects against the sun with 50+ UPF on body, 25+ on mesh inserts
- Ladies' fit on style 222771
- Tagless label
- Raglan sleeves



Back neck vent

222571



222771



229389

222594



Coolcore® mesh insert



Available in Adult only

ATHLETIC GREY HEATHER 55M

BLACK HEATHER K94

DARK GREEN HEATHER V97

GOLD HEATHER E70

KELLY HEATHER U10

MAROON HEATHER T09

NAVY HEATHER U22

ORANGE HEATHER V98

PURPLE HEATHER U86

ROYAL HEATHER U55

SCARLET HEATHER T20

\*WHITE 005

OLIVE HEATHER 49N



ELECTRIFY LONG SLEEVE TEE  
POWERED BY COOLCORE®

<b>222570</b>	Adult	S-3XL	MSRP 28.50
<b>222670</b>	Youth	S-XL	MSRP 28.50
<b>222770</b>	Ladies	XS-2XL	MSRP 28.50

- 87% polyester/13% elastane heathered wicking knit with Coolcore® fabric technology
- 92% polyester knitted mesh/8% elastane wicking knit with Coolcore® fabric technology
- Garment protects against the sun with 50+ UPF on body, 25+ on mesh inserts
- Tagless label
- Raglan sleeves



Back neck vent



222570

229511



222770

Coolcore® mesh insert

221398



Thumbholes on Ladies



ATHLETIC GREY HEATHER 53M    BLACK HEATHER K94    DARK GREEN HEATHER V97    NAVY HEATHER U22    ROYAL HEATHER U55



SCARLET HEATHER T20    \*WHITE 005    KELLY HEATHER U10    OLIVE HEATHER 49N



GOLD HEATHER E70    MAROON HEATHER T09    ORANGE HEATHER V98    PURPLE HEATHER U86

\*Heathering not available in White.

MORE FROM THE ELECTRIFY COOLCORE® COLLECTION

**222571**  
**222671**  
**222771**  
Electrify Coolcore® Tee

**222574**  
**222674**  
**222774**  
Electrify Coolcore® Pullover

**222589**  
**222689**  
Electrify Coolcore® Hoodie

**222572**  
**222772**  
Electrify Coolcore® Polo



**MOMENTUM TEAM  
COLLECTION**



223502

223702

229556

221398



Back



**MOMENTUM TEAM  
LONG SLEEVE TEE**

<b>223502</b>	Adult
S-4XL	MSRP 20.90
<b>223602</b>	Youth
S-XL	MSRP 20.90
<b>223702</b>	Ladies
S-3XL	MSRP 20.90

- Dry-Excel™ 100% polyester interlock smooth knit with color secure® technology that helps prevent dye migration
- Ladies' Fit on style 223702
- Tagless label
- Garment protects against the sun with 45+ UPF
- Set-in sleeves

Available in Adult, Youth & Ladies



BLACK/MAROON 486  
BLACK/IRON 62U  
NAVY/WHITE 301  
ROYAL/WHITE 280  
SCARLET/WHITE 408

Available in Adult, Youth & Ladies

Available in Adult & Ladies Only



WHITE/BLACK 226  
WHITE/IRON 61U  
PURPLE/BLACK 496  
ROYAL/BLACK 289  
SCARLET/BLACK 406

Available in Adult

Available in Adult & Youth Only



KELLY/BLACK 342  
BLACK/DK GREEN 429  
ORANGE/WHITE 320

**MORE FROM THE MOMENTUM TEAM COLLECTION**

**223501**  
**223601**  
**223701**  
Momentum Team Tee



**223500**  
**223600**  
**223700**  
Momentum Team 1/2 Zip Pullover



**222540**  
**222640**  
Momentum Team Hoodie



**P820**  
Momentum Team Cap







**MOMENTUM TEAM  
COLLECTION**



Back



**MOMENTUM TEAM TEE**

<b>223501</b>	Adult	S-3XL	MSRP 15.90
		4XL-6XL	in select colors
<b>223601</b>	Youth	XXS-XL	MSRP 15.90
<b>223701</b>	Ladies	S-3XL	MSRP 15.90

- Dry-Excel™ 100% polyester interlock smooth knit with color secure® technology that helps prevent dye migration
- Ladies' Fit on style 223701
- Tagless label
- Contrast color V-neck on Ladies
- Garment protects against the sun with 45+ UPF
- Set-in sleeves

223501



223701



2430

229556

Available in Adult 4XL-6XL



BLACK/  
IRON  
62U

BLACK/  
WHITE  
420

NAVY/  
WHITE  
301

ROYAL/  
WHITE  
280

SCARLET/  
BLACK  
406

WHITE/  
IRON  
61U

Available in Adult  
S-3XL & Youth



DK GREEN/  
BLACK  
444

ORANGE/  
WHITE  
320

Available in Adult  
S-3XL & Ladies



COLUMBIA  
BLUE/  
WHITE  
293

Available in Adult S-3XL



GOLD/  
WHITE  
245

KELLY/  
WHITE  
340

ROYAL/  
GOLD  
281

SCARLET/  
NAVY  
W86

VEGAS  
GOLD/  
BLACK  
252

Available in Adult S-3XL, Youth & Ladies



IRON/  
WHITE  
99D

MAROON/  
BLACK  
388

PURPLE/  
BLACK  
496

ROYAL/  
BLACK  
289

SCARLET/  
WHITE  
408

**MORE FROM THE MOMENTUM TEAM COLLECTION**

**223502**  
**223602**  
**223702**

Momentum  
Team Long  
Sleeve Tee



**223500**  
**223600**  
**223700**

Momentum  
Team 1/2 Zip  
Pullover



**222540**  
**222640**

Momentum  
Team  
Hoodie



**P820**  
Momentum  
Team Cap





222138

222338



ESSENTIAL LONG SLEEVE TEE  
POWERED BY COOLCORE®

<b>222138</b>	Adult	S-3XL	MSRP 22.20
<b>222238</b>	Youth	S-XL	MSRP 22.20
<b>222338</b>	Ladies	XS-2XL	MSRP 22.20

- 88% polyester/12% elastane Coolcore® fabric with color secure® technology that helps prevent dye migration
- Garment protects against the sun with 50+ UPF
- Ladies' fit on style 222338
- Tagless label
- Set-in sleeves with rolled forward shoulder seam



ATHLETIC GREY 009    COLUMBIA BLUE 089    DARK GREEN 035    MAROON 745



OLIVE 039    PURPLE 747    WHITE 005

Available in Youth



BLACK 080    IRON 980    NAVY 065    ROYAL 060    SCARLET 083

229511

229389



ESSENTIAL TEE POWERED BY COOLCORE®

<b>222136</b>	Adult	S-3XL	MSRP 18.40
<b>222236</b>	Youth	S-XL	MSRP 18.40
<b>222336</b>	Ladies	XS-2XL	MSRP 18.40

- 88% polyester/12% elastane Coolcore® fabric with color secure® technology that helps prevent dye migration
- Garment protects against the sun with 50+ UPF
- Ladies' fit on style 222336
- Tagless label
- Set-in sleeves with rolled forward shoulder seam



ATHLETIC GREY 009    BLACK 080    COLUMBIA BLUE 089    DARK GREEN 035



IRON 980    MAROON 745    NAVY 065    OLIVE 039



PURPLE 747    ROYAL 060    SCARLET 083    WHITE 005

222336



222136



229389

222594



6845

229511



6847

2430



**SUPER SOFT-SPUN  
POLY LONG SLEEVE TEE**

**6845** Adult S-3XL MSRP 17.60  
**6847** Ladies XS-2XL MSRP 17.60

- 100% soft-spun polyester with color secure® technology that helps prevent dye migration
- Soft cottony feel
- Ladies' Fit on style 6847
- Non branded tagless label
- Tonal topstitching
- Set-in sleeves with angled shoulder seam for mobility and comfort



BLACK  
080

IRON  
980

NAVY  
065

OLIVE  
039



ROYAL  
060

WHITE  
005

Available in Adult only



CELERY  
54T

LAKE  
55T

MAROON  
745

OYSTER  
53T

SCARLET  
083

**MORE FROM THE  
SOFT-SPUN POLY COLLECTION**

**6842**  
**6843**  
**6844**  
Super  
Soft-Spun  
Poly Tee





**SOFT-SPUN POLY  
COLLECTION**



**SUPER SOFT-SPUN POLY TEE**

<b>6842</b>	Adult	S-3XL	MSRP 14.10
<b>6843</b>	Youth	S-XL	MSRP 14.10
<b>6844</b>	Ladies	XS-2XL	MSRP 14.10

- 100% soft-spun polyester with color secure® technology that helps prevent dye migration
- Soft cottony feel
- Ladies' Fit on style 6844
- Non branded tagless label
- Tonal topstitching
- Set-in sleeves with angled shoulder seam for mobility and comfort



6842



6844

2430

229511



ATHLETIC GREY 009    BLACK 080    LAKE 55T    NAVY 065



ROYAL 060    SCARLET 083    WHITE 005

Available in Adult & Ladies



CELERY 54T    IRON 98D    MAROON 745    OLIVE 039

Available in Adult & Ladies



OYSTER 53T

Available in Ladies only



DUSTY ROSE 23D

**MORE FROM THE  
SOFT-SPUN POLY COLLECTION**

**6845**  
**6847**  
Super Soft-Spun  
Poly Long Sleeve  
Tee





222594



Back



NEW

ALL-PRO LONG SLEEVE TEE

222559 Adult S-4XL MSRP 16.00

- Eco-Revive® product featuring 50% recycled polyester/50% polyester
- Garment protects against the sun with 50+ UPF
- Tag-free label
- Raglan sleeves



ATHLETIC GREY  
HEATHER  
55M

BLACK  
HEATHER  
K94

NAVY  
HEATHER  
U22



ROYAL  
HEATHER  
U55

SCARLET  
HEATHER  
T20



222754

222554



NEW

ALL-PRO TEE

<b>222554</b>	Adult	S-4XL	MSRP 11.50
<b>222654</b>	Youth	XS-XL	MSRP 11.50
<b>222754</b>	Ladies	S-3XL	MSRP 11.50

- Eco-Revive® product featuring 50% recycled polyester/50% polyester
- Garment protects against the sun with 50+ UPF
- Ladies' fit on style 222754
- Tag-free label
- Raglan sleeves



ATHLETIC GREY HEATHER K5M

BLACK HEATHER K94

NAVY HEATHER U22

ROYAL HEATHER U55

Available in Adult & Ladies only



SCARLET HEATHER T20

DARK GREEN HEATHER V97

MAROON HEATHER T09

PURPLE HEATHER U86

ecoREVIVE. SUSTAINABLE FABRIC TECHNOLOGY



### MOMENTUM LONG SLEEVE TEE

<b>222822</b>	Adult	S-3XL	MSRP 16.10
		4XL in select colors	
<b>222823</b>	Youth	S-XL	MSRP 16.10
<b>222824</b>	Ladies	S-3XL	MSRP 16.10

- Dry-Excel™ 100% polyester interlock smooth knit with color secure® technology that helps prevent dye migration
- Ladies' fit on 222824
- Tagless label
- Garment protects against the sun with 45+ UPF
- Set-in sleeves



Available in Adult 4XL



Available in Adult & Youth only



Available in Adult only



Available in Adult only



### MORE FROM THE MOMENTUM COLLECTION

**222818**  
**222819**  
**222820**  
 Momentum Tee



**222830**  
**222831**  
 Momentum Hoodie



**223522**  
**223622**  
**223722**  
 Momentum Shorts



Available in Adult & Ladies



OLIVE 039

Available in Ladies only



POWER PINK 809



Made with soft touch  
comfort fabric



**MOMENTUM TEE**

<b>222818</b>	Adult	S-4XL	MSRP 11.00
		5XL & 6XL	in select colors
<b>222819</b>	Youth	XXS-XL	MSRP 11.00
<b>222820</b>	Ladies	S-3XL	MSRP 11.00

- Dry-Excel™ 100% polyester interlock smooth knit with color secure® technology that helps prevent dye migration
- Ladies' fit on 222820
- Tagless label
- Garment protects against the sun with 45+ UPF
- Set-in sleeves



229511

222818

222820

2430

**MORE FROM THE MOMENTUM COLLECTION**





2795

2780



2797

2430



ATTAIN WICKING LONG SLEEVE TEE

<b>2795</b>	Adult	S-3XL 4XL in select colors	MSRP 13.60
<b>2796</b>	Youth	S-L	MSRP 13.60
<b>2797</b>	Ladies	XS-3XL	MSRP 13.60

- 100% polyester wicking knit with color secure® technology that helps prevent dye migration
- Ladies' fit on style 2797
- Longer length and bigger chest for added comfort
- Tear away label
- Raglan sleeves



MORE FROM THE ATTAIN COLLECTION

**2785**  
**2786**  
**2787**  
Attain 1/4 Zip Pullover

**2790**  
**2791**  
**2792**  
**2793**  
Attain Short Sleeve Tee

**2780**  
**2781**  
Attain Shorts

**1565**  
**1566**  
**1567**  
Attain Two Button Jersey

**4794**  
**4795**  
Ladies Attain Sleeveless Jersey

\*Safety Yellow is ANSI certified

\*Maroon & Purple shades can vary by brand, please contact our Customer Care with questions



ATTAIN RAGLAN SLEEVE TEE

<b>2790</b>	Adult	S-3XL 4XL-6XL in select colors	MSRP 6.70
<b>2791</b>	Youth	XXS-XL	MSRP 6.70
<b>2792</b>	Ladies	XS-3XL	MSRP 6.70
<b>2793</b>	Girls	S-L	MSRP 6.70

- 100% polyester wicking knit with color secure® technology that helps prevent dye migration
- Ladies' fit on style 2792
- Longer length and bigger chest for added comfort
- Raglan sleeves



COLUMBIA BLUE 089   GRAPHITE 059   LIME 096   POWER BLUE 812   POWER PINK 809



TEAL 063   DARK GREEN 035   PURPLE\* 747



ELECTRIC ORANGE 79N   WHITE 005   SAFETY YELLOW\* 243

Available in Adult, Youth, & Ladies



CARDINAL J36   GOLD 025   KELLY 030   ORANGE 029   MAROON\* 745   VEGAS GOLD 023

Available in 4XL-6XL Adult Sizes



BLACK 080   NAVY 065   SCARLET 083   ROYAL 060   SILVER 099

\*Safety Yellow is ANSI certified

\*Maroon & Purple shades can vary by brand, please contact our Customer Care with questions



2790

2792

229511

229394

MORE FROM THE ATTAIN COLLECTION

<p><b>2785</b> <b>2786</b> <b>2787</b></p> <p>Attain 1/4 Zip Pullover</p> 	<p><b>2795</b> <b>2796</b> <b>2797</b></p> <p>Attain Long Sleeve Tee</p> 	<p><b>2780</b> <b>2781</b></p> <p>Attain Shorts</p> 
<p><b>1565</b> <b>1566</b> <b>1567</b></p> <p>Attain Two Button Jersey</p> 	<p><b>4794</b> <b>4795</b></p> <p>Ladies Attain Sleeveless Jersey</p> 	



1788



788



## NEXGEN LONG SLEEVE TEE

<b>788</b>	Adult	S-3XL	MSRP 11.40
<b>789</b>	Youth	S-XL	MSRP 11.40
<b>1788</b>	Ladies	XS-3XL	MSRP 11.40

- 100% polyester wicking knit
- Non-branded pad print label
- Set-in sleeves

### Available in Adult, Youth & Ladies



### Available in Adult & Ladies



### Available in Adult Only



### Available in Ladies Only





Non-branded tagless label



790



1790

2430

1420

## CORE color choice

NEXGEN WICKING TEE



<b>790</b>	Adult	S-3XL	MSRP 7.20
		4XL in select colors	
<b>791</b>	Youth	XS-XL	MSRP 7.20
<b>1790</b>	Ladies	XS-3XL	MSRP 7.20

- 100% polyester wicking knit with color secure® technology that helps prevent dye migration
- Ladies' fit on style 1790
- Non-branded tagless label
- Set-in sleeves
- Safety Yellow is ANSI certified

Available in Adult 4XL



BLACK 080   NAVY 065   ROYAL 060   SCARLET 083   SILVER 099   WHITE 005

Available in Adult/Youth Only



OLIVE 039   TEAL 063   ELECTRIC ORANGE 79N 023   VEGAS GOLD 023   COYOTE 208

Available in Adult Only



COLUMBIA BLUE 089   DARK GREEN 035   GOLD 025   GRAPHITE 059   KELLY 030   MAROON 745

Available in Adult/Ladies Only



ORANGE 029   POWER BLUE 812   POWER PINK 809   PURPLE 747   SAFETY YELLOW\* 243

\*Safety Yellow is ANSI certified



**DRI-POWER® CORE PERFORMANCE TEE**

**629X2M** Adult S-4XL MSRP 18.00  
**629X2B** Youth S-XL MSRP 18.00

- 4.1 ounce 100% polyester interlock
- Dri-Power® Moisture Wicking Technology
- Heat sealed label
- Self-fabric crew neck collar
- Garment protects against the sun with 30+ UPF
- Set-in sleeves



**DRI-POWER® CORE PERFORMANCE LONG SLEEVE TEE**

**631X2M** Adult S-4XL MSRP 21.70

- 4.1 ounce 100% polyester interlock
- Dri-Power® Moisture Wicking Technology
- Heat sealed label
- Garment protects against the sun with 30+ UPF
- Set-in sleeves





222596



222796



COORDINATING HOODIE

223505 | 223605

**IMPORTANT DECORATION INFORMATION**

Due to dyes used for creating this garment, dye migration is likely if screen printing or using certain heat transfers without preventive steps. You are advised to consult your Screen Print ink or Heat Transfer provider before decorating if you are unsure of the proper steps for decoration.

**DECORATION RECOMMENDATIONS**

- Low Temp or Low "bleed" Inks and Heat Transfers only
- For Platisols, a black or grey blocking layer should be considered
- Consider Silicone Inks as best alternative
- Consult with your ink or heat transfer provider if necessary before decorating

**ULTRA SOFT FEEL!**  
COTTONY



STOCK COTTON-TOUCH™ POLY TEE

<b>222596</b>	Adult	S-3XL	MSRP 26.60
<b>222696</b>	Youth	S-XL	MSRP 26.60
<b>222796</b>	Ladies	S-3XL	MSRP 26.60

- 5.6 ounce 95% polyester/ 5% spandex wicking knit
- Fully sublimated design
- Ladies' fit on style 222796
- Tagless label
- Garment protects against the sun with 50+ UPF
- Set-in sleeves

Available in Adult only



BLACK CLOUD PRINT 65T, NAVY CLOUD PRINT 64T, ROYAL CLOUD PRINT 63T, SCARLET CLOUD PRINT 66T, SILVER CLOUD PRINT 69T, COL BLUE CLOUD PRINT 67T, STORM CLOUD PRINT 70T



GLACIER COL BLUE 76V, GLACIER BLACK 87V, GLACIER DR GREEN 88V, GLACIER SCARLET 86V, GLACIER GOLD 85V, GLACIER NAVY 84V, GLACIER ORANGE 83V, GLACIER PURPLE 82V, GLACIER ROYAL 81V, GLACIER SILVER 80V



SHOCKWAVE GRAPHITE 86V, SHOCKWAVE DR GREEN 87V, SHOCKWAVE NAVY 88V, SHOCKWAVE SCARLET 70V, SHOCKWAVE GOLD 71V, SHOCKWAVE KELLY 72V, SHOCKWAVE ORANGE 73V, SHOCKWAVE ROYAL 75V, SHOCKWAVE PURPLE 74V, SHOCKWAVE SILVER 77V

\* Because of the manufacturing process of the fabric and garment, each tee will be unique



SHADOW TONAL HEATHER COLLECTION



SHADOW TONAL HEATHER TRAINING TEE

<b>2900</b>	Adult	S-3XL	MSRP 19.20
<b>2901</b>	Youth	S-L	MSRP 19.20
<b>2902</b>	Ladies	XS-2XL	MSRP 19.20

- 100% polyester heathered wicking knit
- Tagless label
- Set-in sleeves



Ladies Fit

Available in Adult & Ladies Only

Available in Adult & Youth Only

Available in Adult Only

Available in Ladies Only



BLACK 080

NAVY 065

ORANGE 029

PURPLE 050

GOLD 025

KELLY 030

MAROON 045

RED 040

ROYAL 060

SILVER 099

POWER PINK 809





CUTTER+  
COLLECTION

6908



1426

6915



1426



CUTTER+ V-NECK JERSEY

<b>6907</b>	Adult	S-3XL	MSRP 20.60
<b>6908</b>	Youth	S-XL	MSRP 20.60
<b>6915</b>	Ladies	XS-2XL	MSRP 20.60
<b>6916</b>	Girls	S-L	MSRP 20.60

- 96% polyester/4% spandex lightweight knit with color secure® technology that helps prevent dye migration
- Garment protects against the sun with 50+ UPF
- Ladies's fit on style 6915
- Tear away label
- Raglan sleeves

Available in Ladies & Girls



BLACK/ GOLD 421	BLACK/ SCARLET 500	NAVY/ SCARLET S20	ORANGE/ BLACK 321	ROYAL/ SCARLET W81	SCARLET/ BLACK 406	VEGAS GOLD/ BLACK 252	WHITE/ NAVY 221	BLACK/ WHITE 420	COLUMBIA BLUE/ WHITE 293	DARK GREEN/ WHITE 438	GOLD/ WHITE 245
-----------------------	--------------------------	-------------------------	-------------------------	--------------------------	--------------------------	--------------------------------	-----------------------	------------------------	--------------------------------	--------------------------------	-----------------------

Available in Ladies & Girls

Available in Ladies & Girls only



GRAPHITE/ WHITE R04	LIME/ ROYAL O3W	MAROON/ WHITE 380	NAVY/ WHITE 301	ORANGE/ WHITE 320	PURPLE/ WHITE 450	ROYAL/ WHITE 280	SCARLET/ WHITE 408	WHITE/ BLACK 226	WHITE/ ROYAL 220	WHITE/ SCARLET 235	TEAL/ WHITE 331	VEGAS GOLD/ WHITE 250	WHITE 005
---------------------------	-----------------------	-------------------------	-----------------------	-------------------------	-------------------------	------------------------	--------------------------	------------------------	------------------------	--------------------------	-----------------------	-----------------------------	--------------



Half Court



Jump Shot



**FREESTYLE SUBLIMATED  
TURBO LONG SLEEVE TEE**

<b>5S1S2S</b>	Adult
S-3XL	MSRP 64.50
<b>5S1S2X</b>	Ladies
S-3XL	MSRP 64.50

Gradient  
Explosion



**FREESTYLE SUBLIMATED TURBO  
LONG SLEEVE TRAINING TEE**

<b>228112</b>	Adult
XS-3XL	MSRP 45.00
<b>228212</b>	Youth
S-XL	MSRP 45.00

Block Stripe



Spectator



**ULTRA SOFT  
COTTONY FEEL!**



**FREESTYLE SUBLIMATED TURBO  
COTTON-TOUCH POLY  
LONG SLEEVE TEE**

<b>228177</b>	Adult
S-4XL	MSRP 59.40
<b>228277</b>	Youth
S-XL	MSRP 59.40
<b>228377</b>	Ladies
S-3XL	MSRP 59.40



Back pocket with zipper

223503



TRAINING | LONG SLEEVE

VENTURA SOFT KNIT CREW



223503 Adult S-3XL MSRP 44.00

- Solids, 89% recycled polyester/11% spandex
- Heathers, 45% recycled polyester/44% polyester/11% spandex
- Tagless label
- Crew neck with V stitching at neckline
- Set-in sleeves



BIRCH 907

BLACK 080

CARBON HEATHER E83

GREY HEATHER 013

MAROON 745



NAVY 065

OLIVE 039

ROYAL 060

SCARLET 083

STORM 932

VENTURA SOFT-KNIT SHORTS



223504 Adult S-3XL MSRP 35.00

223604 Youth S-XL MSRP 35.00

- Solids, 89% recycled polyester/11% spandex
- Heathers, 45% recycled polyester/44% polyester/11% spandex
- Tagless label
- Covered elastic waistband with outside drawcord (inside drawcord on Youth)
- Front pockets with inner valuables pocket inside left pocket
- Back pocket with zipper
- 7-inch inseam



BLACK 080

CARBON HEATHER 039

GREY HEATHER 013

NAVY 065

OLIVE 039

STORM 932

223504



Made with soft touch  
comfort fabric



MOSSY OAK® MOMENTUM  
LONG SLEEVE TEE

<b>222836</b>	Adult	S-4XL	MSRP 28.50
<b>222838</b>	Ladies	S-3XL	MSRP 28.50

- Dry-Excel™ 100% polyester interlock smooth knit with color secure® technology that helps prevent dye migration
- Fully sublimated design
- Garment protects against the sun with 45+ UPF
- Ladies' fit on style 222838
- Tagless label
- Set-in sleeves



Ladies fit

COORDINATING  
HOODIE

223515



MO ELEMENTS  
AGUA BLACKFIN  
86T

MO ELEMENTS  
AGUA STEELHEAD  
85T

MO ELEMENTS  
WAKEFORM EQUATOR  
87T

MO ELEMENTS  
WAKEFORM GALE  
88T

MO HABITAT  
82T

MO ORIGINAL  
BOTTOMLAND  
42T



# SHADOW TONAL HEATHER COLLECTION



## SHADOW TONAL HEATHER LONG SLEEVE TEE

**2903** Adult S-3XL MSRP 25.40

- 100% polyester heathered wicking knit
- Tagless label
- Set-in sleeves



BLACK 080

MAROON 045

NAVY 065

ORANGE 029



RED 040

ROYAL 060

SILVER 099

### MORE FROM THE SHADOW TONAL HEATHER COLLECTION



**2900**  
**2901**  
**2902**  
 Shadow Tonal Heather Training Tee



**2908**  
**2909**  
 Shadow Tonal Heather 1/4 Zip Pullover



**5412**  
**5413**  
 Shadow Tonal Heather Polo



229556



229394

229556

Spectator



**FREESTYLE SUBLIMATED  
LONG SLEEVE HOODIE**

<b>228143</b>	Adult	S-4XL	MSRP 58.80
<b>228243</b>	Youth	S-XL	MSRP 58.80
<b>228343</b>	Ladies	S-3XL	MSRP 58.80

Gradient



**ULTRA SOFT  
COTTONY FEEL!**



**FREESTYLE SUBLIMATED  
COTTON-TOUCH™ POLY HOODIE**

<b>228148</b>	Adult	S-3XL	MSRP 66.00
<b>228248</b>	Youth	S-XL	MSRP 66.00
<b>228348</b>	Ladies	S-3XL	MSRP 66.00





**ELECTRIFY COOLCORE®  
COLLECTION**



**ELECTRIFY HOODIE POWERED  
BY COOLCORE®**

**222589** Adult S-3XL MSRP 45.60  
**222689** Youth S-XL MSRP 45.60

- 87% polyester/13% elastane heathered wicking knit with Coolcore® fabric technology
- Garment protects against the sun with 50+ UPF
- Heat sealed label
- 3-piece hood
- Set-in sleeves with rolled forward shoulder seam



ATHLETIC GREY HEATHER 55M    BLACK HEATHER K94    NAVY HEATHER U22    ROYAL HEATHER U55    SCARLET HEATHER T20    \*WHITE 005

Available in Adult Only



DARK GREEN HEATHER V97    GOLD HEATHER E70    KELLY HEATHER U10    MAROON HEATHER T09    OLIVE HEATHER 49N    ORANGE HEATHER V98    PURPLE HEATHER U86

\*Heathering not available in White.



**STOCK COTTON-TOUCH POLY  
COLLECTION**



**STOCK COTTON-TOUCH™ POLY HOODIE**

**223505** Adult S-3XL MSRP 34.70  
**223605** Youth S-XL MSRP 34.70

- 5.6 ounce 95% polyester/5% spandex wicking knit
- Fully sublimated design
- Garment protects against the sun with 50+ UPF
- Tagless label
- 3 panel hood
- Set-in sleeves



BLACK CLOUD PRINT 65T    COL BLUE CLOUD PRINT 67T    DK GREEN CLOUD PRINT 62T    GOLD CLOUD PRINT 61T    NAVY CLOUD PRINT 64T    ORANGE CLOUD PRINT 68T    ROYAL CLOUD PRINT 63T    SCARLET CLOUD PRINT 66T    SILVER CLOUD PRINT 69T    STORM CLOUD PRINT 70T



GLACIER COL BLUE 76V    GLACIER BLACK 87V    GLACIER DK GREEN 88V    GLACIER SCARLET 86V    GLACIER GOLD 85V    GLACIER NAVY 84V    GLACIER ORANGE 83V    GLACIER PURPLE 82V    GLACIER ROYAL 81V    GLACIER SILVER 80V



SHOCKWAVE GRAPHITE 66V    SHOCKWAVE DK GREEN 67V    SHOCKWAVE NAVY 68V    SHOCKWAVE SCARLET 70V    SHOCKWAVE GOLD 71V    SHOCKWAVE KELLY 72V    SHOCKWAVE ORANGE 73V    SHOCKWAVE ROYAL 75V    SHOCKWAVE PURPLE 74V    SHOCKWAVE SILVER 77V

\* Because of the manufacturing process of the fabric and garment, each hoodie will be unique

\* See decoration recommendations for this style & more in the Stock Cotton-Touch Poly Collection pg. 21

Made with soft touch  
comfort fabric



## COORDINATING LONG SLEEVE TEE

222836 | 222838



## MOSSY OAK® MOMENTUM HOODIE

223515 Adult S-4XL MSRP 33.60

- Dry-Excel™ 100% polyester interlock smooth knit with color secure® technology that helps prevent dye migration
- Fully sublimated design
- Garment protects against the sun with 45+ UPF
- Tagless label
- 3 panel crossover hood
- Set-in sleeves



MO ELEMENTS AGUA BLACKFIN 86T    MO ELEMENTS AGUA STEELHEAD 85T    MO ELEMENTS WAKEFORM EQUATOR 87T    MO ELEMENTS WAKEFORM GALE 88T    MO HABITAT 82T    MO ORIGINAL BOTTOMLAND 42T



## MOMENTUM HOODIE

222830 Adult S-3XL MSRP 23.70  
4XL in select colors

222831 Youth S-XL MSRP 23.70

- Dry-Excel™ 100% polyester interlock smooth knit with color secure® technology that helps prevent dye migration
- Tagless label
- Garment protects against the sun with 45+ UPF
- Set-in sleeves







222598



222798



Thumbhole on Ladies'

# ecoREVIVE™

SUSTAINABLE FABRIC TECHNOLOGY

## VENTURA SOFT KNIT HOODIE



<b>222598</b>	Adult	S-3XL	MSRP 51.00
<b>222698</b>	Youth	S-XL	MSRP 51.00
<b>222798</b>	Ladies	XS-2XL	MSRP 51.00

- Solids, 89% recycled polyester/11% spandex
- Heathers, 45% recycled polyester/44% polyester/11% spandex
- Tagless label
- Ladies' fit on style 222798
- 3-panel hood with drawcord on Adult only
- Set-in sleeves with thumbholes for warmth on Ladies'
- Side seam pockets on Adult
- Set-in sleeves
- Self-fabric cuffs and bottom band
- Side vents on Ladies'

222799



BIRCH 907    BLACK 080\*    CARBON HEATHER E83    DARK GREEN 035    GREY HEATHER 013    MAROON 745



NAVY 065    OLIVE 039    ROYAL 060    SCARLET 083    STORM 932

Available in Ladies only



LAVENDER J63    ORCHID 47V    TERRACOTTA J46

222599



VENTURA SOFT KNITSHORT SLEEVE HOODIE



**222505** Adult S-3XL MSRP 45.00  
**222605** Youth S-XL MSRP 45.00

- Solids, 89% recycled polyester/11% spandex
- Heathers, 45% recycled polyester/44% polyester/11% spandex

- Tagless label
- 3-panel hood with drawcord on Adult only
- Side seam pockets
- Set-in sleeves



BIRCH 907    BLACK 080    CARBON HEATHER E83    GREY HEATHER 013    NAVY 065    OLIVE 039    SCARLET 083    STORM 932



POWERED BY **COOLCORE®**



SHORT SLEEVE HOODIE  
POWERED BY COOLCORE®

**222142** Adult XS-3XL MSRP 26.20

- 88% polyester/12% elastane Coolcore® fabric with color secure® technology that helps prevent dye migration
- Garment protects against the sun with 50+ UPF
- Tagless label
- 3 panel crossover hood
- Set-in sleeves with rolled forward shoulder seam

222594



ATHLETIC GREY 009    BLACK 080    DARK GREEN 035    IRON 980    MAROON 745



NAVY 065    OLIVE 039    ROYAL 060    SCARLET 083    WHITE 005



**FREESTYLE SUBLIMATED  
SLEEVELESS HOODIE**

<b>228147</b>	Adult	S-3XL	MSRP 49.30
<b>228247</b>	Youth	S-XL	MSRP 49.30



Gradient

228181



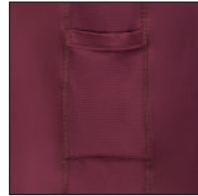
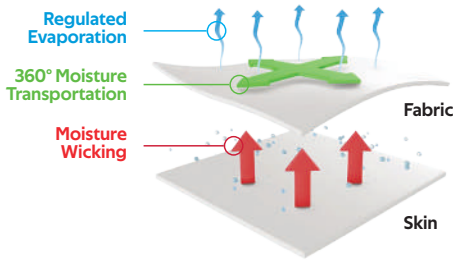
Spectator



Watercolor Camo II



## Patented Fabric Technology



Right side insert pocket

## Technology Comparison



The same athlete after 20 minutes of activity



### SLEEVELESS HOODIE POWERED BY COOLCORE®

**222590** Adult XS-3XL MSRP 25.60

- 88% polyester/12% elastane Coolcore® fabric with color secure® technology that helps prevent dye migration
- 92% polyester knitted mesh/8% elastane wicking knit inserts with Coolcore® fabric technology
- Garment protects against the sun with 50+ UPF
- Tagless label
- Overlapping hood



BLACK 080    IRON 98D    MAROON 745    NAVY 065



ROYAL 060    SCARLET 083    WHITE 005



**E**  
**ECHELON**  
ATHLETIC TRAINING

222594



Coolcore® fabric is engineered to distribute moisture quickly throughout the garment.

As the moisture spreads it dries faster to keep you cool and comfortable, and has UPF 50 sun protection



TANK POWERED BY COOLCORE®

222593 Adult S-3XL MSRP 26.60

- 88% polyester/12% elastane Coolcore® fabric with color secure® technology that helps prevent dye migration
- Garment protects against the sun with 50+UPF
- Tagless label
- Rolled forward shoulder and side seam

222594



BLACK  
080

IRON  
980

MAROON  
745

NAVY  
065



ROYAL  
060

SCARLET  
083

WHITE  
005


**ESSENTIAL MUSCLE TANK**
**64MTTM** Adult S-3XL MSRP 8.80

- 4.75 ounce
- 60% cotton/40% polyester
- Oxford 47% cotton & 53% polyester
- Dri-Power® Moisture Wicking Technology
- Odor protection
- Tagless label
- Garment protects against the sun with 30+ UPF


 NAVY  
NAV

 BLACK  
BLK

 OXFORD  
OXF

 ROYAL  
ROY

 TRUE RED  
TRR

 WHITE  
WHI

**TRAINING TANK**

<b>703</b>	Adult	S-3XL	MSRP 9.90
<b>704</b>	Youth	S-L	MSRP 9.90
<b>1705</b>	Ladies	XS-2XL	MSRP 9.90
<b>1706</b>	Girls	S-L	MSRP 9.90

- 100% polyester wicking knit
- Tear away label



Ladies Fit


 BLACK  
008

 WHITE  
005

 RED  
040

 ROYAL  
060

 COLUMBIA  
BLUE  
089

 NAVY  
065

 ORANGE  
029

 GOLD  
025

 PURPLE  
050

 KELLY  
030

 SILVER  
GREY  
016

 LIME  
096

 GRAPHITE  
059

 POWER  
YELLOW  
810

 POWER  
BLUE  
812

 MAROON  
045

 DARK  
GREEN  
035

 POWER  
PINK  
809



### LADIES CROSSOVER TANK

**2436** Ladies S-2XL MSRP 28.10

- 84% polyester/16% spandex knit with color secure® technology that helps prevent dye migration
- 90% polyester/10% spandex wicking mesh inserts and yoke with color secure® technology
- Tagless label



Racerback



### LADIES POLY/SPANDEX SOLID RACERBACK TANK

**1202** Ladies S-2XL MSRP 26.60  
**1203** Girls S-L MSRP 26.60

- Heavyweight 90% polyester/10% spandex knit
- Tagless label
- Wide racerback styling



Wide Racerback



## ATTAIN COLLECTION



### LADIES ATTAIN SLEEVELESS TEE

**4794** Ladies S-2XL MSRP 10.20  
**4795** Girls XS-L MSRP 10.20

- 100% polyester wicking knit with color secure® technology that helps prevent dye migration
- Tear away label







### LADIES SOJOURNER TANK

**2434** Ladies XS-2XL MSRP 22.50

- 100% polyester wicking smooth knit body
- 100% polyester lightweight wicking mesh back
- Tagless label
- Dropped tail



Racerback

229389



AQUA Y07 BLACK 080 CORAL 043 DARK GREEN 035 GRAPHITE 059 LIGHT LAVENDER 868 MAROON 045



NAVY 065 ORANGE 029 POWER PINK 809 RED 040 ROYAL 060 WHITE 005

### LADIES LUX TRI-BLEND TANK

**3078** Ladies S-3XL MSRP 16.20  
**3079** Girls S-L MSRP 16.20

- 3.8 ounce, 50% polyester/25% cotton/25% rayon tri-blend knit
- Fits loose to body
- Tear away label
- Scoop neck
- Contoured bottom



Racerback with keyhole



GREY HEATHER 013 BLACK HEATHER K94 RED HEATHER V96 ROYAL HEATHER U55 WHITE 005

Available in Ladies only



LIGHT LAVENDER HEATHER 74N STORM HEATHER 72N MAROON HEATHER T09 NAVY HEATHER U22 DUSTY ROSE HEATHER 73N



### LADIES TANK POWERED BY COOLCORE®

**222777** Ladies XS-2XL MSRP 26.80

**222877** Girls S-L MSRP 26.80

- 88% polyester/12% elastane Coolcore® fabric with color secure® technology that helps prevent dye migration
- 92% polyester knitted mesh/8% elastane wicking knit inserts with Coolcore® fabric technology
- Garment protects against the sun with 50+ UPF
- Tagless label
- Dropped tail hem and side vents



ATHLETIC GREY 009    BLACK 080    IRON 98D    NAVY 065    ROYAL 060    SCARLET 083

Available in Ladies only



WHITE 005    COLUMBIA BLUE 089    DARK GREEN 035    MAROON 745    PURPLE 747



### LADIES TIGHTS POWERED BY COOLCORE®

**222702** Ladies XS-2XL MSRP 52.60

**222801** Girl S-L MSRP 52.60

- 89% polyester/11% elastane spandex knit with Coolcore® fabric technology
- 88% polyester/12% elastane Coolcore® fabric
- Fits close to body
- Tagless label
- High waisted, wide flat waistband for secure fit and comfort
- Inside key pocket
- Phone pocket on upper thigh on both legs
- Flatlock stitching provides comfort and helps prevent chafing



BLACK 080    CARBON J96    NAVY 065



222777

222702



High waisted, wide flat waistband



Racerback

Mesh vented back panel



POWERED BY  
**coolcore**<sup>®</sup>

Coolcore<sup>®</sup> fabric is engineered to distribute moisture quickly throughout the garment.

As the moisture spreads it dries faster to keep you cool and comfortable, and has UPF 50 sun protection



Back

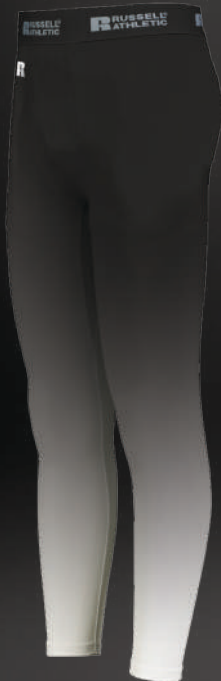


**NEW**

**FREESTYLE SUBLIMATED BASELAYER TIGHTS POWERED BY COOLCORE®**

<b>R26CSM</b>	Adult	S-2XL	MSRP 72.00
<b>R26CSW</b>	Youth	S-XL	MSRP 72.00

- 89% polyester/11% elastane spandex knit with Coolcore® fabric technology
- Ultra tight fit
- Tag-free label
- Branded soft brushed back exposed elastic waistband provides comfort



Gradient



2P9S2S

5P4S2S

R26CSM





Marbled Leather



TRAINING | FREESTYLE SUBLIMATION



Coolcore® fabric is engineered to distribute moisture quickly throughout the garment.

As the moisture spreads it dries faster to keep you cool and comfortable, and has UPF 50 sun protection





Downfield

Speckled Gradient



5P4S2S



FREESTYLE SUBLIMATED  
DYNASPEED LONG  
SLEEVE COMPRESSION

**2P9S2S** Adult  
5-4XL MSRP 60.40



Advantage



FREESTYLE SUBLIMATED  
DYNASPEED PERFORMANCE  
HALF-SLEEVE COMPRESSION

**2P0S2S** Adult  
5-4XL MSRP 57.30



For available design lines visit [augustasportswear.com/sublimation](http://augustasportswear.com/sublimation)



Fracture



FREESTYLE SUBLIMATED  
DYNASPEED SHORT  
SLEEVE COMPRESSION TEE

**2P8S2S** Adult  
S-4XL MSRP 53.00



Fracture



FREESTYLE SUBLIMATED  
DYNASPEED SLEEVELESS  
COMPRESSION TEE

**2P7S2S** Adult  
S-4XL MSRP 50.90



Downfield

2P7S2S

5P4S2S



Waistband detail



### SLEEVELESS COMPRESSION TANK

**R22CPM** Adult XS-3XL MSRP 29.90

- 84% polyester/16% spandex elastane Xtreme compression cloth with Coolcore® fabric technology
- 92% polyester/8% elastane stretch mesh inserts underarm
- Garment protects against the sun with 50+ UPF
- Tagless label
- Dropped tail



BLACK BLK  
 GRIDIRON SILVER GSV  
 NAVY NAV  
 ROYAL ROY  
 TRUE RED TRR  
 WHITE WHI



### COMPRESSION SHORTS

**R24CPM** Adult XS-3XL MSRP 26.80

- 84% polyester/16% spandex elastane Xtreme compression cloth with Coolcore® fabric technology
- 92% polyester/8% elastane stretch mesh gusset
- Garment protects against the sun with 50+ UPF
- Ultra tight fit
- Tagless label
- Branded soft brushed back exposed elastic waistband provides comfort



BLACK BLK  
 GRIDIRON SILVER GSV  
 WHITE WHI



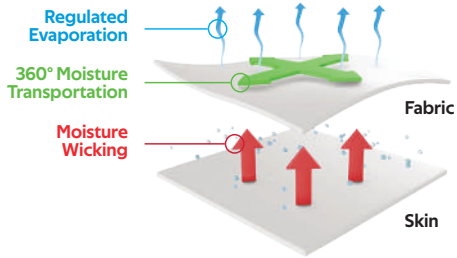
R22CPM

R24CPM





## Patented Fabric Technology



## Technology Comparison



The same athlete after 20 minutes of activity



## COMPRESSION FULL LENGTH TIGHT

**R25CPM** Adult XS-3XL MSRP 36.10

- 84% polyester/16% spandex elastane Xtreme compression cloth with Coolcore® fabric technology
- 92% polyester/8% elastane stretch mesh insert at back of knee and gusset
- Garment protects against the sun with 50+ UPF
- Ultra tight fit
- Tagless label
- Branded soft brushed back exposed elastic waistband provides comfort



BLACK  
BLK

GRIDIRON SILVER  
GSV

WHITE  
WHI





Back



POWERED BY  
**Coolcore®**



### HALF SLEEVE COMPRESSION TEE

**R21CPM** Adult S-3XL MSRP 34.00

- 84% polyester/16% spandex elastane Xtreme compression cloth with Coolcore® fabric technology
- 92 polyester/8% elastane stretch mesh insert on center back and underarm
- Garment protects against the sun with 50+ UPF
- Tagless label
- Raglan sleeves
- Dropped tail



BLACK  
BLK

GRID IRON  
SILVER  
GSV

MAROON  
MAR

NAVY  
NAV



ROYAL  
ROY

STEALTH  
SHL

TRUE RED  
TRR

WHITE  
WHI



### COMPRESSION 7/8 TIGHT

**R23CPM** Adult XS-3XL MSRP 34.90

- 84% polyester/16% spandex elastane Xtreme compression cloth with Coolcore® fabric technology
- 92 polyester/8% elastane stretch mesh insert at back of knee and gusset
- Garment protects against the sun with 50+ UPF
- Ultra tight fit
- Tagless label
- Branded soft brushed back exposed elastic waistband provides comfort



BLACK  
BLK

GRID IRON  
SILVER  
GSV

STEALTH  
SHL

WHITE  
WHI



Back



**LONG SLEEVE COMPRESSION TEE**

**R20CPM** Adult S-3XL MSRP 36.90

- 84% polyester/16% spandex elastane Xtreme compression cloth with Coolcore® fabric technology
- 92% polyester/8% elastane stretch mesh inserts with Coolcore® fabric technology
- Garment protects against the sun with 50+ UPF
- Tagless label
- Raglan sleeves



BLACK  
BLK

GRID IRON  
SILVER  
GSV

MAROON  
MAR

NAVY  
NAV



ROYAL  
ROY

STEALTH  
SHL

TRUE RED  
TRR

WHITE  
WHI



### HYPERFORM COMPRESSION HALF SLEEVE TEE

**2606** Adult S-3XL MSRP 29.70

- 84% polyester/16% spandex knit
- Ultra tight fit
- Tagless label
- Raglan Sleeves
- Flatlock stitching provides comfort and helps prevent chafing



BLACK 080   GRAPHITE 059   NAVY 065   WHITE 005



### HYPERFORM COMPRESSION TEE

**2600** Adult S-3XL MSRP 29.70

**2601** Youth S-L MSRP 29.70

- 84% polyester/16% spandex knit
- Ultra tight fit
- Tagless label
- Raglan sleeves
- Flatlock stitching provides comfort and helps prevent chafing

Available in Adult only



BLACK 080   WHITE 005   NAVY 065   GRAPHITE 059   RED 040   ROYAL 060



### HYPERFORM COMPRESSION SLEEVELESS TEE

**2602** Adult S-3XL MSRP 27.00

**2603** Youth S-L MSRP 27.00

- 84% polyester/16% spandex knit
- Ultra tight fit
- Tagless label
- Flatlock stitching provides comfort and helps prevent chafing

Available in Adult only



BLACK 080   WHITE 005   RED 040   ROYAL 060   NAVY 065   SILVER 039   GRAPHITE 059



**HYPERFORM  
COMPRESSION  
LONG SLEEVE TEE**

**2604** Adult  
S-3XL MSRP 34.00  
**2605** Youth  
S-L MSRP 34.00

- 84% polyester/16% spandex knit
- Ultra tight fit
- Tagless label
- Raglan sleeves
- Flatlock stitching provides comfort and helps prevent chafing



BLACK 080 WHITE 005 RED 040 ROYAL 060



NAVY 065 GRAPHITE 059



**HYPERFORM  
COMPRESSION  
CALF-LENGTH TIGHT**

**2618** Adult  
S-3XL MSRP 28.10  
**2619** Youth  
M-L MSRP 28.10

- 84% polyester/16% spandex knit
- Ultra tight fit
- Tagless label
- Soft brushed back exposed elastic waistband provides comfort
- Flatlock stitching provides comfort and helps prevent chafing

Available  
in Adult  
only



BLACK 080 GRAPHITE 059 NAVY 065 WHITE 005



**HYPERFORM  
COMPRESSION  
TIGHT**

**2620** Adult  
XS-3XL MSRP 28.30

- 84% polyester/16% spandex knit
- Ultra tight fit
- Tagless label
- Soft brushed back exposed elastic waistband provides comfort
- Flatlock stitching provides comfort and helps prevent chafing



BLACK 080 GRAPHITE 059 NAVY 065 WHITE 005



**HYPERFORM  
COMPRESSION  
SHORTS**

**2615** Adult  
S-3XL MSRP 22.10  
**2616** Youth  
M-L MSRP 22.10

- 84% polyester/16% spandex knit
- Ultra tight fit
- Tagless label
- Soft brushed back exposed elastic waistband provides comfort
- Flatlock stitching provides comfort and helps prevent chafing
- 6-inch inseam
- Youth inseam graded

Available  
in Adult  
only



BLACK 080 WHITE 005 NAVY 065



Zipper on Outside Lower Leg



Phone pocket



### LADIES HIGH RISE TECH TIGHT

**221398** Ladies XS-2XL MSRP 55.30  
Tall ST-2XLT MSRP 59.30

- Dry-Excel™ 82% polyester/18% spandex heavyweight knit with high mechanical stretch
- Fits close to body
- Tagless label
- High waisted, wide flat waistband for secure fit and comfort
- Reflective detail on lower back leg
- Flatlock stitching provides comfort and helps prevent chafing



BLACK 080



CARBON J96



NAVY 065



### LADIES HYPERFORM COMPRESSION TIGHT

**2630** Ladies  
XS-2XL MSRP 38.20

- Heavyweight 88% polyester/12% spandex knit
- Tagless label
- Low rise, wide flat waistband for secure fit and comfort
- Hidden possession pocket in waistband
- Flatlock stitching provides comfort and helps prevent chafing



BLACK 080 NAVY 065



### LADIES HYPERFORM COMPRESSION CAPRI

**2628** Ladies  
XS-2XL MSRP 39.20

- Heavyweight 88% polyester/12% spandex knit
- Tagless label
- Hidden possession pocket in waistband
- Low rise, wide flat waistband for secure fit and comfort
- Flatlock stitching provides comfort and helps prevent chafing



BLACK 080 NAVY 065



### LADIES HYPERFORM FITTED SHORTS

**2625** Ladies  
XS-2XL MSRP 23.10

- Heavyweight 88% polyester/12% spandex knit
- Tagless label
- Low rise, soft brushed back exposed elastic waistband provides comfort
- No front seam
- U-shaped gusset
- Flatlock stitching provides comfort and helps prevent chafing
- 3 1/2-inch inseam



BLACK 080



### LADIES DARE SHORTS

**1232** Ladies  
S-2XL MSRP 21.80

**1233** Girls  
S-L MSRP 21.80

- Heavyweight 88% polyester/12% spandex knit
- Tagless label
- Low rise, wide flat waistband for secure fit and comfort
- No front seam
- U-shaped gusset
- Flatlock stitching provides comfort and helps prevent chafing
- 2 1/2-inch inseam
- Girls inseam graded



BLACK 080 DARK GREEN 035 MAROON 045 NAVY 065



PURPLE 050 RED 040 ROYAL 060



**LADIES VENT BRA**

**223300** Ladies XS-2XL MSRP 28.30

Keyhole Back Detail

- Dry-Excel™ Heavyweight 90% polyester/10% spandex knit
- 92% polyester/8% spandex wicking pinhole mesh back



229389



**LADIES ALL SPORT SPORTS BRA**

**2417** Ladies XS-2XL MSRP 27.20

Pinhole Mesh Racerback

- Heavyweight 90% polyester/10% spandex knit
- 92% polyester/8% spandex wicking pinhole mesh back panel and inserts
- Tagless label
- Flatlock seamed construction for extra comfort
- Reinforced armhole seams for added support
- Soft brushed back elastic at hem





Advantage



10-inch  
inseam



FREESTYLE SUBLIMATED  
DYNASPEED SHORTS

**5P4S2S** Adult S-4XL MSRP 56.70



Marble



Downfield



Marble



10-inch  
inseam  
(Youth  
inseam  
graded)



FREESTYLE SUBLIMATED  
TRAINING SHORTS

**228181** Adult S-3XL MSRP 48.70

**228281** Youth S-XL MSRP 48.70



Watercolor Camo



Gradient





222798

223704



Front pockets with inner valuables pocket inside left pocket



LADIES VENTURA SOFT KNIT SHORTS

**223704** Ladies XS-2XL MSRP 35.00

- Solids, 89% recycled polyester/11% spandex
- Heathers, 45% recycled polyester/44% polyester/11% spandex
- Tagless label
- Covered elastic waistband with inside drawcord
- Back pocket with zipper
- V-notch at sides
- 5-inch inseam



BLACK 080

CARBON HEATHER E83

GREY HEATHER 013



LAVENDER J63

NAVY 065

ORCHID 47V



ROYAL 060

SCARLET 083

TERRACOTTA J46



222818

### 60/40 FLEECE SHORTS

**222802** Adult S-3XL MSRP 30.00

- 9 ounce 60% cotton/40% polyester athletic fleece
- Tear away label
- Covered elastic waistband with inside drawcord
- Mock fly
- Side seam pockets
- 8-inch inseam



BLACK 080    CARBON HEATHER E83    CHARCOAL HEATHER 017    NAVY 065



Side Seam Pockets

8-inch Inseam

222802

### BASIC COTTON POCKET SHORTS

**25843M** Adult S-4XL MSRP 14.20

- 6.8 ounce
- Colors: 100% cotton,
- Black Heather: 50% cotton/50% polyester
- Oxford: 53% polyester/47% cotton
- Covered waistband with inside elastic drawcord



NAVY YPI    OXFORD OXF    BLACK HEATHER CD1    BLACK BLK



223722

223522



MOMENTUM SHORTS

<b>223522</b>	Adult	S-3XL	MSRP 20.00
<b>223622</b>	Youth	S-XL	MSRP 20.00
<b>223722</b>	Ladies	S-2XL	MSRP 20.00

- Dry-Excel™ 100% polyester interlock smooth knit with color secure® technology that helps prevent dye migration
- Garment protects against the sun with 45+ UPF
- Ladies' fit on style 223722
- Tagless label
- 2-inch brushed back elastic waistband with inside drawcord
- Side seam pockets
- Side vents
- 6-inch inseam
- 5-inch inseam on Ladies'
- Youth inseam graded



BLACK  
080

GRAPHITE  
059

NAVY  
065



ROYAL  
060

SCARLET  
063

SILVER  
099



Back zippered pocket



Side seam  
pockets

8 1/2-inch  
inseam

Reflective  
V-notch



LEGEND STRETCH WOVEN SHORTS

**R20SWM** Adult S-4XL MSRP 37.10  
5XL-6XL in select colors

- 90% polyester/10% spandex lightweight stretch woven fabric with durable water-repellent finish to keep you dry
- Micromesh inseam gusset
- Heat sealed label
- Covered elastic waistband with inside drawcord

Available in 5XL-6XL



BLACK  
BLK

KHAKI  
010

GRID IRON  
SILVER  
GSV

NAVY  
NAV

STEALTH  
SHL



Side seam pockets

7-inch inseam

222590



**SHORTS POWERED BY COOLCORE®**

**222594** Adult S-3XL MSRP 32.80

- 88% polyester/12% elastane Coolcore® fabric with color secure® technology that helps prevent dye migration
- 92% polyester knitted mesh/8% elastane wicking knit inserts with Coolcore® fabric technology
- Garment protects against the sun with 50+ UPF
- Tagless label
- Covered elastic waistband
- Side seam pockets



ATHLETIC GREY 009

BLACK 080

IRON 980

MAROON 745

NAVY 065

ROYAL 060



Side seam pockets

8.5-inch inseam



WELD SHORTS

<b>229556</b>	Adult	S-4XL	MSRP 30.90
<b>229656</b>	Youth	S-XL	MSRP 30.90

- 90% polyester/10% spandex
- Dry-Excel™ 100% polyester pinhole micromesh inseam gusset
- Tagless label
- Covered elastic waistband with inside drawcord



BLACK 080      CARBON J96      KHAKI 010



NAVY 065      ROYAL 060      SILVER 099



Back Zippered Pocket



Side Seam Pockets

8-inch (Youth Inseam Graded)



WHISK 2.0 SHORTS

<b>229511</b>	Adult	S-3XL	MSRP 22.70
<b>229611</b>	Youth	S-XL	MSRP 22.70

in select colors

- 100% polyester wicking knit with color secure® technology that helps prevent dye migration
- Tagless label
- 2-inch brushed back elastic waistband with inside drawcord
- Side vents

Available in Youth



BLACK 080      GRAPHITE 059      NAVY 065      SILVER 099



FOREST 038      MAROON 745      ROYAL 060      SCARLET 083



Side  
Seam  
Pockets

10-inch  
(7-inch on  
Youth)



### DRI-POWER® ESSENTIAL PERFORMANCE SHORTS WITH POCKETS

**TS7X2M** Adult S-3XL MSRP 20.40

**TS7X2B** Youth S-XL MSRP 20.40

- 4.0 ounce, 100% polyester interlock
- Dri-Power® Moisture Wicking Technology
- Elastic waistband with inside drawcord on Adult



TRUE RED  
TRR

STEALTH  
SHL

ROYAL  
ROY

PURPLE  
PUR

NAVY  
NAV

Available in Adult only



DARK GREEN  
DGR

BLACK  
BLK

ROCK  
BFJ

CARDINAL  
CDR

MAROON  
MAR



Side  
Seam  
Pockets

9-inch  
(Youth  
Inseam  
Graded)



### TRAINING SHORTS WITH POCKETS

**1428** Adult S-3XL MSRP 16.70

**1429** Youth S-L MSRP 16.70

- 100% polyester wicking knit
- Full-cut
- Tagless label
- Covered elastic waistband with inside drawcord

Available in Adult only



BLACK  
080

ROYAL  
060

NAVY  
065

GRAPHITE  
059

RED  
040

SILVER GREY  
016





### MODIFIED MESH SHORTS

**1850** Adult S-4XL MSRP 13.60  
**1851** Youth XXS-XL MSRP 13.60

- 100% polyester sports mesh with color secure® technology that helps prevent dye migration
- 100% polyester wicking knit lining with color secure® technology
- Tagless label
- Covered elastic waistband with inside drawcord



7-inch  
(Youth  
Inseam  
Graded)



### DRI-POWER® MESH SHORTS

**659AFM** Adult S-4XL MSRP 18.00  
**659AFB** Youth S-XL MSRP 18.00

- 4.1 ounce, 100% polyester mesh
- Fully lined
- Dri-Power® Moisture Wicking Technology
- Covered waistband with inside elastic drawcord



9-inch  
(7-inch  
on Youth)





Side  
Seam  
Pockets

9-inch  
Inseam

### MESH SHORTS WITH POCKETS

**651AFM** Adult S-3XL MSRP 19.20

- 2.8 ounce 100% polyester
- Fully lined
- Dri-Power® Moisture Wicking Technology
- Covered waistband with inside elastic drawcord



TRUE RED  
TRR

ROYAL  
ROY

NAVY  
NAV

MAROON  
MAR

DARK  
GREEN  
DGR



BURNT  
ORANGE  
BOR

BLACK  
BLK

WHITE  
WHI

STEEL  
STE

STEALTH  
SHL



7-inch  
(Youth  
Inseam  
Graded)



### WICKING MESH ATHLETIC SHORTS

**805** Adult S-3XL MSRP 15.30

**806** Youth S-L MSRP 15.30

- 100% polyester wicking mesh
- Full-cut
- Covered elastic waistband with inside drawcord
- Tagless label



BLACK  
080

RED  
040

ROYAL  
060

NAVY  
065

DARK  
GREEN  
035



ATTAIN SHORTS

<b>2780</b>	Adult	S-3XL	MSRP 10.80
<b>2781</b>	Youth	XS-L	MSRP 10.80

- 100% polyester wicking knit with color secure® technology that helps prevent dye migration
- Tagless label
- Covered elastic waistband with inside drawcord

7-inch  
(Youth  
Inseam  
Graded)



BLACK  
080

GRAPHITE  
059

NAVY  
065

RED  
040

ROYAL  
060

Available in Adult Only



1420



1425



9-inch  
(Youth  
Inseam  
Graded)

7-inch  
(Youth  
Inseam  
Graded)



### TRAINING SHORTS & OCTANE SHORTS

<b>1420</b>	Adult	S-3XL	MSRP 8.70
<b>1421</b>	Youth	S-L	MSRP 8.70
<b>1425</b>	Adult	S-3XL	MSRP 8.40
<b>1426</b>	Youth	XXS-L	MSRP 8.40

- 100% polyester wicking knit
- Full-cut
- Tagless label
- Covered elastic waistband with inside drawcord



### LADIES OCTANE SHORTS

<b>1423</b>	Ladies	S-2XL	MSRP 8.40
-------------	--------	-------	-----------

- 100% polyester wicking knit
- Tagless label
- Covered elastic waistband with inside drawcord



7-inch  
Inseam

*\*Maroon shades can vary by brand, please contact our Customer Care with questions*



Center back valuables pocket with zippered closure

4-inch inseam (Girls Inseam Graded)



### LADIES OLYMPUS SHORTS

<b>229389</b>	Ladies	XS-2XL	MSRP 31.80
<b>229489</b>	Girls	S-L	MSRP 31.80

- Shell is 90% polyester/10% spandex
- Lining is 100% polyester wicking crepe
- Liner wicks moisture
- Tagless label
- Low rise, covered elastic waistband with inside drawcord
- Inside key pocket
- Inner brief with leg elastic



Mesh Back Yoke

3 1/2-inch (Girls Inseam Graded)



### LADIES WAYFARER SHORTS

<b>2430</b>	Ladies	XS-2XL	MSRP 23.40
<b>2431</b>	Girls	S-L	MSRP 23.40

- Shell is 100% polyester micropoly
- Inserts are 100% polyester mesh
- Lining is 100% polyester wicking crepe
- Liner wicks moisture
- Low rise, covered elastic waistband with inside drawcord
- Inner brief with leg elastic
- Inside key pocket
- Heat sealed label



Mesh Insert

4-inch (Girls Inseam Graded)



### LADIES PULSE TEAM SHORTS

<b>1265</b>	Ladies	S-2XL	MSRP 24.80
<b>1266</b>	Girls	S-L	MSRP 24.80

- Shell is 100% polyester micropoly
- Inserts are 100% polyester mesh
- Lining is 100% polyester wicking crepe
- Liner wicks moisture
- Low rise, covered elastic waistband with inside drawcord
- Inner brief with leg elastic
- Inside key pocket





5-inch  
(Girls  
Inseam  
Graded)



### LADIES WICKING MESH SHORTS

<b>960</b>	Ladies	S-2XL	MSRP 20.40
<b>961</b>	Girls	S-L	MSRP 20.40

- 100% polyester wicking mesh
- Covered elastic waistband with inside drawcord



3-inch  
(Girls  
Inseam  
Graded)



### LADIES JERSEY SHORTS

<b>987</b>	Ladies	XS-XL 2XL in select colors	MSRP 10.30
<b>988</b>	Girls	XS-L	MSRP 10.30

- Heavyweight 50% polyester/50% cotton jersey knit
- Elastic waistband
- V-notch leg





# COOLCORE®

222777



222784



Hidden Side Pocket



### LADIES SKORT POWERED BY COOLCORE®

<b>222784</b>	Ladies	XS-2XL	MSRP 40.20
<b>222884</b>	Girl	S-L	MSRP 40.20

- 88% polyester/12% elastane Coolcore® fabric with color secure® technology that helps prevent dye migration
- Garment protects against the sun with 50+ UPF
- Tagless label
- Wide flat waistband for secure fit and comfort
- Hidden possession pocket in waistband
- Phone pocket on upper right thigh
- Flatlock stitching provides comfort and helps prevent chafing



BLACK 080      IRON 980      NAVY 065



ROYAL 060      SCARLET 083      WHITE 005

Available in Ladies only



DARK GREEN 035      MAROON 745      PURPLE 747



### LADIES ACTION COLOR BLOCK SKORT



**2410** Ladies S-2XL MSRP 39.60  
**2411** Girls S-L MSRP 39.60

- Lightweight 90% polyester/10% spandex knit skirt
- Heavyweight 90% polyester/10% spandex knit inner short
- Tagless label
- Low rise, wide flat waistband for secure fit and comfort
- Hidden possession pocket in waistband
- Flatlock stitching provides comfort and helps prevent chafing



### LADIES FEMFIT SKORT



**2420** Ladies XS-2XL MSRP 39.00  
**2421** Girls S-L MSRP 39.00

- Lightweight 90% polyester/10% spandex knit skirt
- Graphite Heavyweight 90% polyester/10% spandex knit inner short
- 94% polyester/6% spandex maze mesh yoke
- Tagless label
- Low rise, wide flat waistband for secure fit and comfort
- Hidden possession pocket in waistband
- Flatlock stitching provides comfort and helps prevent chafing
- Longer length at back of skort for added coverage



Graphite Inner Short

