

MEN'S SOCCER



ON THE COVER:

NIKE DF CHALLENGE V JERSEY SS US
FD7417, PAGE 5

NIKE DF US WOVEN LASER V SHORT
DH8116, PAGE 16



JERSEYS	2
SHORTS	15
DIGITAL KIT	18
SOCKS	21
GOALKEEPING	24
TRAINING	28
EQUIPMENT	51
COLOR CHART	54

NIKE DF ACADEMY PRO 24 SS TOP K
FD7592, PAGE 38

MEN'S SOCCER




MOVE TO ZERO



Helping Protect The Future Of Sport For All Athletes*

Move to Zero is Nike's journey toward zero carbon and zero waste to help protect the future of sport. We exist to serve athletes everywhere and that's why we're on a mission to help ensure a healthy planet. For us, there is no finish line.

[NikeTeam.com](https://www.nike.com) will now display a sunburst logo next to products made with sustainable materials.

Look for this logo  Sustainable Materials to find products made with at least 50% sustainable materials by weight, exclusive of trims. Sustainable materials include recycled polyester or organic cotton.

Recycled polyester reduces carbon emissions and waste.

Organic cotton is grown without synthetic fertilizers and with less water than conventional cotton.



For more information on Nike Sustainability please visit nike.com/sustainability or purpose.nike.com.

NEW SOCCER



NIKE DF PARK DERBY IV JERSEY SS US
FD7432, PAGE 12

NIKE DF VENOM WOVEN SHORT IV US
FD7442, PAGE 15



NIKE DF ACADEMY PRO 24 TRACK JACKET K
FD7681, PAGE 36

**NIKE DRI-FIT ADV VAPOR IV JERSEY US SS
DR0671 \$77.00**

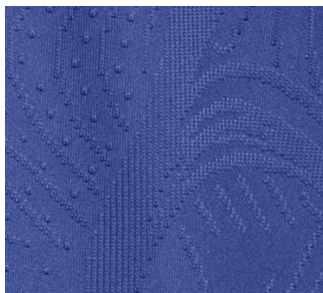
SIZES: S, M, L, XL, 2XL
FABRIC: 100% polyester.
OFFER DATE: 01/01/23
END DATE: 12/31/24

Step on to the field ready for fast-paced play in the Nike Dri-FIT ADV Vapor Jersey. Engineered for optimal breathability, its moisture-wicking design helps keep you dry and cool under match-day pressure. Lightweight fabric in a slim, streamlined fit combats cling so you can focus on being the first to the ball. Lower insets line up perfectly with design details on the Nike Dri-FIT ADV Vapor IV Shorts to create an on-field look worthy of pro-level play.



- 010** Black/Black/Black/(White)
- 100** White/White/White/(Black)
- 419** College Navy/College Navy/Game Royal/(White)
- 480** Game Royal/Game Royal/College Navy/(White)
- 657** University Red/University Red/Bright Crimson/(White)

KIDS / DR0837 / XS-XL / \$77.00



GRAPHIC KNIT DETAIL



BACK VIEW

**NIKE DRI-FIT US SS STRIKE III JERSEY
DR0890 \$50.00**

SIZES: S, M, L, XL, 2XL
FABRIC: 100% polyester.
OFFER DATE: 01/01/23
END DATE: 12/31/24

Take the field in match-ready style in the lightweight Nike Strike Jersey. A slim, streamlined fit ensures that nothing comes between you and the ball, and sweat-wicking fabric works with breathable mesh to help keep you cool and composed during fast-paced play. Ribbed insets stretch with you to let you move without restrictions. Embroidered Swoosh design trademark.



- 010** Black/Black/Black/(White)
- 012** Wolf Grey/Black/Black/(White)
- 419** College Navy/College Navy/Game Royal/(White)
- 480** Game Royal/College Navy/College Navy/(White)
- 011** Black/Volt/Volt/(White)
- 100** White/White/White/(Black)
- 448** Valor Blue/College Navy/College Navy/(White)
- 657** University Red/Bright Crimson/Bright Crimson/(White)

KIDS / DR0913 / XS-XL / \$50.00



GRAPHIC KNIT DETAIL



**NIKE DRI-FIT US SS PRECISION VI JERSEY
DR0945 \$45.00**

SIZES: S, M, L, XL, 2XL
FABRIC: 100% polyester.
OFFER DATE: 01/01/23
END DATE: 12/31/25

Make a statement on the field in the Nike Precision Jersey. Lightweight sweat-wicking fabric pairs with breathable mesh in a slim, streamlined fit to help keep you dry and cool from kickoff to the final whistle. Embroidered Swoosh design trademark. Its linear design comes in 7 different colors to energize your team's game-day look.



- 010** Black/Cool Grey/(White)
- 341** Gorge Green/Pro Green/(White)
- 480** Game Royal/Coast Blue/(White)
- 702** Volt/Black/(White)
- 100** White/Wolf Grey/(Black)
- 419** College Navy/Dark Obsidian/(White)
- 657** University Red/Gym Red/(White)

KIDS / DR0951 / XS-XL / \$45.00



BACK VIEW

NEW
NIKE DRI-FIT CHALLENGE V JERSEY SS US
FD7417 \$47.00

SIZES: XS, S, M, L, XL, 2XL, 3XL
FABRIC: 100% polyester.
OFFER DATE: 01/01/24
END DATE: 12/31/25

The Nike Dri-FIT Challenge V Jersey is designed to keep your players cool and comfortable through 90 minutes and beyond. Mesh on the back and side panels offer breathability where athletes need it most. Body and sleeves are a Nike Dri-FIT knit fabric that moves sweat away to help keep players dry. This top is made with 100% recycled material. Side panel construction uses a more efficient pattern to help reduce material waste. Slim fit for a tailored look and feel.



Sustainable Materials



- | | | |
|--------------------------------------|---|--------------------------------------|
| 010 Black/White/(White) | 012 Wolf Grey/Black/(Black) | 100 White/Black/(Black) |
| 341 Gorge Green/White/(White) | 419 College Navy/White/(White) | 448 Valor Blue/White/(White) |
| 480 Game Royal/White/(White) | 657 University Red/White/(White) | 692 Team Maroon/White/(White) |
| 702 Volt/Black/(Black) | 891 Team Orange/Black/(Black) | |

KIDS / FD7427 / XS-XL / \$47.00



**NIKE DRI-FIT US SS CHALLENGE IV JERSEY
DH8003 \$42.00**

SIZES: S, M, L, XL, 2XL
FABRIC: 100% polyester.
OFFER DATE: 01/01/22
END DATE: 12/31/23

The Nike Dri-FIT Challenge IV Jersey brings subtle style and modern performance to the field. Sweat-wicking fabric helps keep you dry and comfortable from the first whistle to the last minute.

- | | |
|--|--|
| 010 Black/Black/White/(White) | 012 Wolf Grey/Wolf Grey/Black/(Black) |
| 100 White/White/White/(Black) | 341 Gorge Green/Gorge Green/White/(White) |
| 419 College Navy/College Navy/White/(White) | 448 Valor Blue/Valor Blue/White/(White) |
| 480 Game Royal/Game Royal/White/(White) | 657 University Red/University Red/White/(White) |
| 692 Team Maroon/Team Maroon/White/(White) | 702 Volt/Volt/Black/(Black) |
| 891 Team Orange/Team Orange/Black/(Black) | |

KIDS / DH8368 / XS-XL / \$42.00



BACK VIEW

**NIKE DRI-FIT US SS TROPHY V JERSEY
DR0934 \$40.00**

SIZES: S, M, L, XL, 2XL
FABRIC: 100% polyester.
OFFER DATE: 01/01/23
END DATE: 12/31/26

Gear up for serious play in the lightweight sweat-wicking Nike Trophy Jersey, designed to keep you dry when the match heats up. Breathable mesh teams with lightweight knit fabric in a slim, streamlined fit to keep the air flowing and distractions low—so you can focus on staying ahead of the ball. Embroidered Swoosh design trademark.

- | | |
|--|--|
| 010 Black/White/White/(White) | 012 Wolf Grey/Bright Crimson/Bright Crimson/(Black) |
| 101 White/White/White/(Black) | 341 Gorge Green/Pine Green/Pine Green/(White) |
| 354 Hyper Turq/Chlorine Blue/Chlorine Blue/(White) | 419 College Navy/Photo Blue/Photo Blue/(White) |
| 448 Valor Blue/College Navy/College Navy/(White) | 480 Game Royal/College Navy/College Navy/(White) |
| 657 University Red/Team Maroon/Team Maroon/(White) | 739 University Gold/Yellow Tour/Yellow Tour/(Black) |
| 891 Team Orange/Safety Orange/Safety Orange/(Black) | |

KIDS / DR0943 / XS-XL / \$40.00



BACK VIEW

**NIKE US SS STRIPED DIVISION IV JERSEY
CW3815 \$37.00**

SIZES: S, M, L, XL, 2XL
FABRIC: 100% polyester.
OFFER DATE: 04/01/21
END DATE: 12/31/24

Dri-FIT knit short-sleeve jersey with rib v-collar. Graphic front panel - traditional stripes in gradient execution. Mesh back panel. Embroidered Swoosh design trademark. Woven authentic Nike jock tag.
Body width: 21.25", Body length: 29.75" (size large).

- | | | |
|--|-------------------------------------|---|
| 060 Anthracite/Black/(White) | 302 Pine Green/Black/(White) | 419 College Navy/Black/(White) |
| 448 Valor Blue/Black/(White) | 480 Game Royal/Black/(White) | 658 University Red/Black/(White) |
| 739 University Gold/Black/(White) | | |

KIDS / CW3820 / XS-XL / \$37.00



BACK VIEW

**NIKE DRI-FIT US SS ACADEMY JERSEY
DH8033 \$37.00**

SIZES: S, M, L, XL, 2XL
FABRIC: 100% polyester.
OFFER DATE: 01/01/22
END DATE: 12/31/25

Every journey to greatness begins with mastering the fundamentals. But make no mistake, the Nike Dri-FIT Academy Jersey is anything but basic. It features sweat-wicking fabric to help keep you cool during your pre-match or training routine.

- | | | |
|---------------------------------------|--|--------------------------------------|
| 010 Black/White/(White) | 012 Wolf Grey/Black/(Black) | 100 White/Wolf Grey/(Black) |
| 341 Gorge Green/White/(White) | 419 College Navy/White/(White) | 480 Game Royal/White/(White) |
| 547 Court Purple/White/(White) | 657 University Red/White/(White) | 692 Team Maroon/White/(White) |
| 702 Volt/Black/(Black) | 739 University Gold/Black/(Black) | |

KIDS / DH8386 / XS-XL / \$37.00



BACK VIEW

**NIKE DRI-FIT US LS TIEMPO PREMIER II JERSEY
DH8046 \$32.00**

SIZES: S, M, L, XL, 2XL
FABRIC: 100% polyester.
OFFER DATE: 01/01/22
END DATE: 12/31/26



Sustainable Materials

The Nike Dri-FIT Tiempo Premier II Jersey brings you the cool performance of sweat-wicking fabric and a mesh back panel kick in when the game heats up.

- | | | |
|-------------------------------------|---|---------------------------------------|
| 010 Black/White/(White) | 100 White/White/(Black) | 419 College Navy/White/(White) |
| 480 Game Royal/White/(White) | 657 University Red/White/(White) | |

KIDS / DH8407 / XS-XL / \$32.00



BACK VIEW

**NIKE DRI-FIT US SS TIEMPO PREMIER II JERSEY
DH8044 \$27.00**



SIZES: S, M, L, XL, 2XL
FABRIC: 100% polyester.
OFFER DATE: 01/01/22
END DATE: 12/31/26

The Nike Dri-FIT Tiempo Premier II Jersey brings you the cool performance of sweat-wicking fabric and a mesh back panel kick in when the game heats up.

- | | | |
|---|---------------------------------------|-------------------------------------|
| 010 Black/White/(White) | 012 Wolf Grey/Black/(Black) | 100 White/White/(Black) |
| 341 Gorge Green/White/(White) | 419 College Navy/White/(White) | 448 Valor Blue/White/(White) |
| 480 Game Royal/White/(White) | 547 Court Purple/White/(White) | 616 Vivid Pink/Black/(Black) |
| 657 University Red/White/(White) | 692 Team Maroon/White/(White) | 702 Volt/Black/(Black) |
| 891 Team Orange/Black/(Black) | | |

KIDS / DH8390 / XS-XL / \$27.00



BACK VIEW

NEW
NIKE DRI-FIT PARK DERBY IV JERSEY SS US
FD7432 \$32.00

SIZES: XS, S, M, L, XL, 2XL, 3XL
FABRIC: 100% polyester.
OFFER DATE: 01/01/24
END DATE: 12/31/27

Help your teams look and play their best in the Nike Dri-FIT Park Derby IV Jersey. Mesh on the back and underarm panels offer breathability where athletes need it most. Body and sleeves are a Nike Dri-FIT knit fabric that moves sweat away to help keep players dry. This top is made with 100% recycled material. Side panel construction uses a more efficient pattern to help reduce material waste. Slim fit for a tailored feel.

- | | | |
|---|--|-------------------------------------|
| 010 Black/White/(White) | 012 Wolf Grey/Volt/(Black) | 100 White/Wolf Grey/(Black) |
| 419 College Navy/White/(White) | 448 Valor Blue/White/(White) | 480 Game Royal/White/(White) |
| 657 University Red/White/(White) | 739 University Gold/White/(White) | |

KIDS / FD7439 / XS-XL / \$32.00



Sustainable Materials



**NIKE DRY US SS PARK DERBY III JERSEY
CW3828 \$32.00**

SIZES: S, M, L, XL, 2XL
FABRIC: 100% polyester.
OFFER DATE: 04/01/21
END DATE: 12/31/23

The Nike Dri-FIT Park Derby III Jersey features sweat-wicking fabric that pulls sweat from your skin to keep you dry and comfortable. The V-neck taped collar makes it ideal for match play or training. Mesh back panel provides additional breathability. Slim fit for a tailored feel.

- | | |
|---|--|
| 010 Black/White/White/(White) | 012 Wolf Grey/Volt/Volt/(Black) |
| 100 White/Wolf Grey/Wolf Grey/(Black) | 419 College Navy/White/White/(White) |
| 448 Valor Blue/White/White/(White) | 480 Game Royal/White/White/(White) |
| 657 University Red/College Navy/College Navy/(White) | 739 University Gold/Game Royal/Game Royal/(White) |

KIDS / CW3834 / XS-XL / \$32.00



BACK VIEW

**NIKE US SS PARK VII JERSEY
BV6710 \$22.00**

SIZES: S, M, L, XL, 2XL
FABRIC: 100% polyester.
OFFER DATE: 04/01/20
END DATE: 12/31/25

Dri-FIT knit short-sleeve jersey with self fabric crew collar. No under arm seam for better movement. Mesh side panels for maximum ventilation. Embroidered Swoosh design trademark. Woven authentic. Nike Sports jock tag.
Body width: 22", Body length: 29.75" (size large).

- | | | |
|------------------------------------|------------------------------------|---------------------------------|
| 010 Black/(White) | 012 Wolf Grey/(Black) | 100 White/(Black) |
| 341 Gorge Green/(White) | 354 Hyper Turquoise/(Black) | 419 College Navy/(White) |
| 448 Valor Blue/(White) | 480 Game Royal/(White) | 547 Court Purple/(White) |
| 635 Bright Crimson/(Black) | 657 University Red/(White) | 702 Volt/(Black) |
| 739 University Gold/(Black) | 891 Team Orange/(Black) | |

KIDS / BV6742 / XS-XL / \$22.00



MESH BACK PANEL VIEW



NEW
NIKE DRI-FIT VENOM WOVEN SHORT IV US
FD7442 \$42.00

SIZES: XS, S, M, L, XL, 2XL, 3XL, ST, MT, LT, XLT, 2XLT, 3XLT
FABRIC: Body: 87% polyester/13% spandex. Mesh: 100% polyester.
OFFER DATE: 01/01/24
END DATE: 12/31/27

The Nike Dri-FIT Venom IV Shorts are designed for soccer's rising stars. Made with Nike Dri-FIT woven fabric, they wick sweat away from the body with four-way stretch properties for increased range of motion. Mesh inner gusset helps to increase breathability. These shorts are made with at least 75% recycled materials. Side panel construction uses a more efficient pattern to help reduce material waste. Slim fit for a tailored look and feel. **Inseam length: 7.75"**

- | | | |
|--------------------------------------|--|---|
| 010 Black/White/(White) | 012 Wolf Grey/Black/(Black) | 100 White/Black/(Black) |
| 302 Pine Green/White/(White) | 419 College Navy/White/(White) | 448 Valor Blue/White/(White) |
| 480 Game Royal/White/(White) | 547 Court Purple/White/(White) | 657 University Red/White/(White) |
| 692 Team Maroon/White/(White) | 739 University Gold/Black/(Black) | |

KIDS / FD7473 / XS-XL / \$42.00



SIDE VIEW

NIKE US WOVEN VENOM SHORT III
CW3857 \$42.00

SIZES: S, M, L, XL, 2XL
FABRIC: 85% polyester/15% spandex.
OFFER DATE: 04/01/21
END DATE: 12/31/23

The Nike Dri-FIT Venom III Soccer Shorts pair sweat-wicking fabric with mesh paneling for peak performance on the pitch. Nike Dri-FIT technology moves sweat from your skin for quicker evaporation—helping you stay dry and comfortable. A mesh panel on the back and inner legs help keep you cool when the game heats up. Adjustable drawcord provides a personalized fit. **Inseam length: 7.5"**

- | | | |
|--|---|--------------------------------------|
| 010 Black/White/(White) | 100 White/Black/(Black) | 302 Pine Green/White/(White) |
| 419 College Navy/White/(White) | 448 Valor Blue/Black/(Black) | 480 Game Royal/White/(White) |
| 547 Court Purple/White/(White) | 657 University Red/Black/(Black) | 692 Team Maroon/White/(White) |
| 739 University Gold/Black/(Black) | | |

KIDS / CW3862 / XS-XL / \$42.00



BACK VIEW

**NIKE DRI-FIT US WOVEN LASER V SHORT
DH8116 \$32.00**

SIZES: S, M, L, XL, 2XL
FABRIC: 100% polyester.
OFFER DATE: 01/01/22
END DATE: 12/31/25

The Nike Dri-FIT shorts feature sweat-wicking fabric and breathable mesh to keep you cool and composed whether you're training or competing. **Inseam length: 7.5"**.

- | | | |
|--------------------------------------|---|--------------------------------------|
| 010 Black/White/(White) | 012 Wolf Grey/Black/(Black) | 100 White/White/(Black) |
| 341 Gorge Green/White/(White) | 419 College Navy/White/(White) | 480 Game Royal/White/(White) |
| 616 Vivid Pink/Black/(Black) | 657 University Red/White/(White) | 692 Team Maroon/White/(White) |
| 891 Team Orange/Black/(Black) | | |

KIDS / DH8410 / XS-XL / \$32.00 / Inseam length: 7" (size medium)



Sustainable Materials



BACK VIEW

**NIKE DRI-FIT US LEAGUE KNIT III SHORT
DR0961 \$29.00**

SIZES: S, M, L, XL, 2XL
FABRIC: 100% polyester.
OFFER DATE: 01/01/23
END DATE: 12/31/26

Round out your game-day uniform with the Nike League Shorts, made from lightweight sweat-wicking fabric that helps you stay dry on the field. With mesh insets and a slim, streamlined fit, they keep the air flowing and distractions low so you can focus on the ball. Embroidered Swoosh design trademark. Elastic waistband with drawcord. **Inseam length: 8"**.

- | | | |
|--|--------------------------------------|---|
| 010 Black/White/(White) | 012 Wolf Grey/Black/(Black) | 100 White/Black/(Black) |
| 341 Gorge Green/White/(White) | 354 Hyper Turq/White/(White) | 419 College Navy/White/(White) |
| 448 Valor Blue/White/(White) | 480 Game Royal/White/(White) | 657 University Red/White/(White) |
| 739 University Gold/Black/(Black) | 891 Team Orange/Black/(Black) | |

KIDS / DR0969 / XS-XL / \$29.00



Sustainable Materials



**NIKE DRI-FIT US CLASSIC II SHORT K
DH8127 \$24.00**

SIZES: S, M, L, XL, 2XL
FABRIC: 100% polyester.
OFFER DATE: 01/01/22
END DATE: 12/31/24

The Nike Dri-FIT Shorts features sweat-wicking fabric to help keep you dry and comfortable whether you're training or competing. **Inseam length: 8.25"**.

- | | | |
|--|---|-------------------------------------|
| 010 Black/White/(White) | 012 Wolf Grey/Black/(Black) | 100 White/White/(Black) |
| 341 Gorge Green/White/(White) | 419 College Navy/White/(White) | 448 Valor Blue/White/(White) |
| 480 Game Royal/White/(White) | 657 University Red/White/(White) | 702 Volt/Black/(Black) |
| 739 University Gold/Black/(Black) | | |

KIDS / DH8427 / XS-XL / \$24.00



Sustainable Materials



BACK VIEW

**NIKE DRY PARK III SHORT NB
BV6857 \$20.00**

SIZES: S, M, L, XL
FABRIC: 100% polyester.
OFFER DATE: 04/01/20
END DATE: 12/31/25

Dri-FIT angled side seam short (slim fit) with soft hand feel updated fit for better mobility/comfort. **Hip width: 20.5" (size large), Inseam length: 9" (all sizes).**

- | | | |
|------------------------------------|-----------------------------------|-----------------------------------|
| 010 Black/(White) | 012 Wolf Grey/(Black) | 100 White/(Black) |
| 354 Hyper Turquoise/(Black) | 419 College Navy/(White) | 480 Game Royal/(White) |
| 547 Court Purple/(White) | 635 Bright Crimson/(Black) | 657 University Red/(White) |
| 692 Team Maroon/(White) | 702 Volt/(Black) | 819 Safety Orange/(Black) |

KIDS / BV6866 / XS-XL / \$20.00 / Inseam length: 7" (size medium)



Sustainable Materials



NEW
NIKE DRI-FIT US DIGITAL 24 JERSEY 60D
DR2728 \$70.00

SIZES: S, M, L, XL, 2XL
FABRIC: 100% polyester.
OFFER DATE: 01/01/23
END DATE: 12/31/24

Dress your squad like their heroes in the Nike Dri-FIT US Digital 24 Jersey. Mesh on the back and side panels offer breathability where athletes need it most. Body and sleeves are a Nike Dri-FIT knit fabric that moves sweat away to help keep players dry. Highly customizable with school and team details. This top is made with 100% recycled material. Side and back panel construction use a more efficient pattern to help reduce material waste.



Sustainable Materials



KIDS / DR2732 / XS-XL / \$70.00



CUSTOMIZE IT

For complete embellishment and pricing options please visit [NIKETEAM.COM](https://www.niketeam.com)

NEW
NIKE DRI-FIT US DIGITAL 24 SHORT 60D
FD8765 \$47.00

SIZES: S, M, L, XL, 2XL
FABRIC: 100% polyester.
OFFER DATE: 01/01/23
END DATE: 12/31/24

The Nike Dri-FIT US Digital 24 Shorts features sweat-wicking fabric to help keep your players dry and comfortable whether you're training or competing. This product is made with 100% recycled polyester fibers. **Hip width: 22.25" (size large), Inseam length: 8.25" (all sizes).**



Sustainable Materials



KIDS / FD8774 / XS-XL / \$47.00 / Inseam length: 7" (size medium)



CUSTOMIZE IT

For complete embellishment and pricing options please visit [NIKETEAM.COM](https://www.niketeam.com)

**NIKE DRY US SS DIGITAL 20 JERSEY
CD6117 \$62.00**

SIZES: S, M, L, XL, 2XL
FABRIC: 100% polyester.
OFFER DATE: 01/01/20
END DATE: 12/31/23

New digital print jersey with multiple print options, short sleeve Dri-FIT top, with updated graphics, new design details with mesh back panel/side stripe for breathability, exterior necktape for color blocking opportunity slim fit with soft hand feel new – gameday graphic design links to EC20 and previous WC18 kits.
Body width: 21.25", Body length: 29.5" (size large).



Sustainable Materials



KIDS / CD6121 / XS-XL / \$62.00



CUSTOMIZE IT

For complete embellishment and pricing options please visit NIKETEAM.COM



**NIKE DRY DIGITAL 20 SHORT
CD6118 \$47.00**

SIZES: S, M, L, XL, 2XL **FABRIC:** 100% polyester.
OFFER DATE: 01/01/20 **END DATE:** 12/31/23

Dri-FIT short to match with digital jerseys with updated fit for comfort/mobility (slim fit) with soft hand feel – gameday links to EC20 and previous WC18 kits.
Hip width: 22.25" (size large), Inseam length: 8.25" (all sizes).



Sustainable Materials



KIDS / CD6122 / XS-XL / \$47.00 / Inseam length: 7" (size medium)



CUSTOMIZE IT

For complete embellishment and pricing options please visit NIKETEAM.COM



CUSTOMIZE IT

COMPLETE EMBELLISHMENT AND PRICING OPTIONS FOR ALL DIGITAL AND CUSTOM STYLES CAN BE FOUND AT NIKETEAM.COM

COLOR OPTIONS: COLOR AVAILABILITY WILL VARY BY STYLE.



LETTERING OPTIONS: HEIGHT WILL VARY BASED ON TEAM NAME.

VAPOR STRIKE - 1 or 2 color

ABCDEFGHIJKLMNOPQRSTUVWXYZ

VAPOR STRIKE ITALIC - 1 or 2 color

ABCDEFGHIJKLMNOPQRSTUVWXYZ

ORANGE - 1 or 2 color

ABCDEFGHIJKLMNOPQRSTUVWXYZ

ALL LEAGUE - 1 or 2 color - (Also available in Condensed version)

ABCDEFGHIJKLMNOPQRSTUVWXYZ

NIKE UNCONTESTED - 1 color

ABCDEFGHIJKLMNOPQRSTUVWXYZ

FULL BLOCK - 1 or 2 color - (Also available in Condensed version)

ABCDEFGHIJKLMNOPQRSTUVWXYZ

BUREAU - 1 or 2 color

ABCDEFGHIJKLMNOPQRSTUVWXYZ

BOULDER - 1 or 2 color

ABCDEFGHIJKLMNOPQRSTUVWXYZ

MICHIGAN STATE - 1 or 2 color

ABCDEFGHIJKLMNOPQRSTUVWXYZ

TUSCON - 1 or 2 color - (Also available in Condensed version)

ABCDEFGHIJKLMNOPQRSTUVWXYZ

NUMBERING OPTIONS: HEIGHT WILL VARY BY STYLE.

VAPOR STRIKE - 1 or 2 color

1234567890

VAPOR STRIKE ITALIC - 1 or 2 color

1234567890

FULL BLOCK - 1 or 2 color - (Also available in Condensed version)

1234567890

ALL LEAGUE - 1 or 2 color - (Also available in Bold and Condensed version)

1234567890

ALL LEAGUE SHADOW - 2 color

1234567890

ALL LEAGUE - 3 color

1234567890

NIKE UNCONTESTED - 1 or 2 color

1234567890

BUREAU - 1 or 2 color

1234567890

ORANGE - 1 or 2 color

1234567890

BOULDER - 3 color only

1234567890

MICHIGAN STATE - 1 or 2 color

1234567890

TUSCON - 1 or 2 color - (Also available in Condensed version)

1234567890

POST EMBELLISHMENT IS NOT RECOMMENDED WITH DIGITALLY PRINTED STYLES.

NEW

NIKE STRIKE KNEE HIGH – WC22
FQ8253 \$18.00

SIZES: XS, S, M, L, XL
 FABRIC: 100% textile.
 OFFER DATE: 01/01/23
 END DATE: 12/31/24

- | | |
|--|--|
| 010 Black/Black/(White) | 100 White/White/(Black) |
| 302 Pine Green/Gorge Green/(White) | 329 Green Spark/Green Spark/(Black) |
| 354 Hyper Turq/Hyper Turq/(Black) | 412 University Blue/Italy Blue/(Mid Navy) |
| 463 Royal Blue/Midnight Navy/(White) | 477 Team Royal/(White) |
| 635 Bright Crimson/Bright Crimson/(Black) | 639 Hyper Pink/Hyper Pink/(Black) |
| 657 University Red/Gym Red/(White) | 702 Volt/Volt/(Black) |
| 719 Tour Yellow/University Gold/(Black) | 891 Team Orange/Team Orange/(Black) |



NIKE MATCHFIT KNEE HIGH – TEAM 20
CV1956 \$18.00

SIZES: XS, S, M, L, XL
 FABRIC: 100% textile.
 OFFER DATE: 01/01/21
 END DATE: 12/31/23

- | | |
|--|--|
| 010 Black/Black/(White) | 100 White/White/(Black) |
| 302 Pine Green/Gorge Green/(White) | 329 Green Spark/Green Spark/(Black) |
| 354 Hyper Turq/Hyper Turq/(Black) | 412 University Blue/Italy Blue/(Mid Navy) |
| 463 Royal Blue/Midnight Navy/(White) | 477 Team Royal/(White) |
| 635 Bright Crimson/Bright Crimson/(Black) | 639 Hyper Pink/Hyper Pink/(Black) |
| 657 University Red/Gym Red/(White) | 702 Volt/Volt/(Black) |
| 719 Tour Yellow/University Gold/(Black) | 891 Team Orange/Team Orange/(Black) |



NIKE ACADEMY OTC SOCK (UNISEX)
SX5728 \$12.00

SIZES: XS, S, M, L, XL
FABRIC: 93% nylon/6% polyester/1% spandex.
OFFER DATE: 01/01/17
END DATE: 12/31/23

Sold in prepacks of 6.

Game day sock with fold-over cuff, articulated foot specific footbed for superior fit and contrast Swoosh design trademark at ankle.

- | | | |
|-----------------------------------|-----------------------------------|------------------------------------|
| 010 Black/(White) | 012 Black/(University Red) | 018 Wolf Grey/(Black) |
| 057 Pewter Grey/(Black) | 100 White/(Black) | 302 Pine Green/(White) |
| 323 Gorge Green/(White) | 410 College Navy/(White) | 448 Valor Blue/(White) |
| 460 Game Royal/(White) | 545 Court Purple/(White) | 616 Vivid Pink/(Black) |
| 648 University Red/(White) | 670 Team Red/(White) | 677 Team Maroon/(White) |
| 702 Volt/(Black) | 719 Tour Yellow/(Black) | 739 University Gold/(Black) |
| 817 Team Orange/(White) | | |



NIKE SQUAD LEG SLEEVE-EC20
DH6621 \$10.00

SIZES: S/M, L/XL
FABRIC: 95% polyester/5% spandex.
OFFER DATE: 04/01/21
END DATE: 12/31/23

Sold in prepacks of 6.

Paired with your favorite socks, the Nike Squad Leg Sleeve features a secure fit over your shin guard for match-ready comfort. Sweat-wicking fabric helps keep feet dry and comfortable. Stretchy design keeps your shin guards in place. Mesh fabric adds ventilation.

- | | | |
|-------------------------------|-----------------------------------|---------------------------------|
| 010 Black/(White) | 100 White/(Black) | 410 College Navy/(White) |
| 463 Royal Blue/(White) | 657 University Red/(White) | |



BACK VIEW

NIKE SQUAD CREW-EC20
SK0030 \$14.00

SIZES: S, M, L, XL
FABRIC: 88% polyester/9% cotton/3% spandex.
OFFER DATE: 04/01/21
END DATE: 12/31/23

Sold in prepacks of 6.

The Nike Squad Crew Socks combine sweat-wicking fabric with targeted cushioning for high-performance comfort during competition. Sweat-wicking fabric helps keep feet dry and comfortable. Cushioning in high-wear areas adds durability.

- | | | |
|-------------------------------|-----------------------------------|---------------------------------|
| 010 Black/(White) | 100 White/(Black) | 410 College Navy/(White) |
| 463 Royal Blue/(White) | 657 University Red/(White) | |



NEW
NIKE DRI-FIT GARDIEN V GOALKEEPER
JERSEY LS US
FD7476 \$85.00

SIZES: XS, S, M, L, XL, 2XL, 3XL
FABRIC: Body: 100% polyester. Panels: 89% polyester/11% spandex.
OFFER DATE: 01/01/24
END DATE: 12/31/25

The Gardien V Goalkeeper Jersey is built with Nike Dri-FIT circular knit fabric that wicks sweat away from the body, coupled with elastane to help increase range of motion for stretch saves. This jersey is made with at least 75% recycled material. Side panel construction helps reduce material waste. Slim fit for a tailored look and feel.



- | | |
|--|---|
| 060 Anthracite/Black/(White) | 329 Green Spark/Pine Green/(White) |
| 354 Hyper Turq/Teal Nebula/(White) | 644 Laser Crimson/University Red/(White) |
| 719 Tour Yellow/University Gold/(Black) | 803 Total Orange/Safety Orange/(Black) |

KIDS / FD7481 / XS-XL / \$85.00



**NIKE DRI-FIT ADV GARDIEN IV GOALKEEPER
JERSEY US LS
DH7977 \$82.00**

SIZES: S, M, L, XL, 2XL
FABRIC: 100% polyester.
OFFER DATE: 01/01/22
END DATE: 12/31/23

The Nike Dri-FIT ADV Gardien IV Goalkeeper Jersey is made with advanced sweat-wicking fabric that's strategically placed in high-heat areas to help keep you cool and comfortable. Flexible sleeves let you move freely on the field so you can reach every shot.

- | | |
|--|--|
| 060 Anthracite/Black/(White) | 300 Hyper Verde/Mean Green/(Black) |
| 354 Hyper Turq/Aquamarine/(Black) | 657 University Red/Team Red/(White) |
| 819 Safety Orange/Orange Trance/(Black) | 719 Tour Yellow/University Gold/(Black) |

KIDS / DH8349 / XS-XL / \$82.00



**NIKE MATCHFIT KNEE HIGH – TEAM 20
CV1956 \$18.00**

SIZES: XS, S, M, L, XL
FABRIC: 100% textile.
OFFER DATE: 01/01/21
END DATE: 12/31/23

- | | |
|--|--|
| 010 Black/Black/(White) | 329 Green Spark/Green Spark/(Black) |
| 354 Hyper Turq/Hyper Turq/(Black) | 657 University Red/Gym Red/(White) |
| 891 Team Orange/Team Orange/(Black) | 719 Tour Yellow/University Gold/(Black) |



**NIKE DRI-FIT PAD GARDIEN I GOALKEEPER
COMPRESSION TIGHT
CV0045 \$72.00**

SIZES: S, M, L, XL, 2XL
 FABRIC: 100% polyester.
 OFFER DATE: 01/01/22
 END DATE: 12/31/23

010 Black/Black/(White)

KIDS / CV0050 / XS-XL / \$72.00



**NIKE DRI-FIT PAD GARDIEN I GOALKEEPER
COMPRESSION SHORT
CV0053 \$67.00**

SIZES: S, M, L, XL, 2XL
 FABRIC: 100% polyester.
 OFFER DATE: 01/01/22
 END DATE: 12/31/23

010 Black/Black/(White)

KIDS / CV0057 / XS-XL / \$67.00 / Inseam length: 5" (size medium)



**NIKE DRY LS US PARK IV GK JERSEY
CJ6068 \$42.00**

SIZES: S, M, L, XL, 2XL
FABRIC: 100% polyester.
OFFER DATE: 04/01/20
END DATE: 12/31/25

Goal keepers jersey with graphic print on sleeves and across upper back panel, mesh back for breathability, slim fit with soft hand feel, shoulder seams rolled forward for better graphic visibility, straight seam across back, mesh back for breathability – gameday graphic print inspired by retro campos gk design. Body width: 19.9", Body length: 28.7" (size large).

010 Black/White/(White) **012** Wolf Grey/White/(Black) **702** Volt/White/(Black)

KIDS / CJ6073 / XS-XL / \$42.00



**NIKE DRY PARK III SHORT NB
BV6857 \$20.00**

SIZES: S, M, L, XL, 2XL
FABRIC: 100% polyester.
OFFER DATE: 04/01/20
END DATE: 12/31/25

Dri-FIT angled side seam short (slim fit) with soft hand feel updated fit for better mobility/comfort. Hip width: 20.5" (size large), Inseam length: 9" (all sizes).

010 Black/White/(White) **012** Wolf Grey/Black/(Black) **702** Volt/(Black)

KIDS / BV6866 / XS-XL / \$20.00 / Inseam length: 7" (size medium)



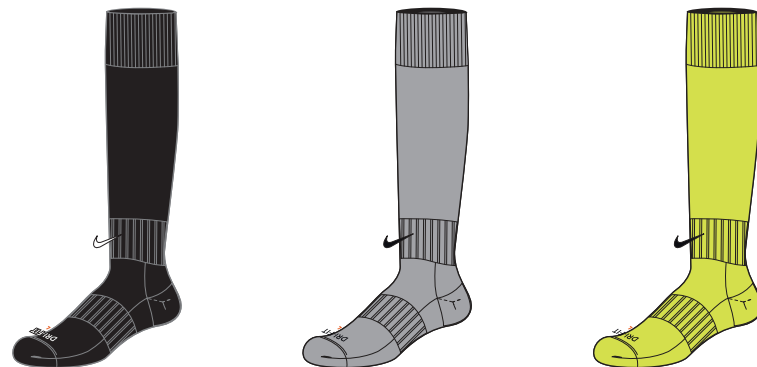
**NIKE ACADEMY OTC SOCK (UNISEX)
SX5728 \$12.00**

Sold in prepacks of 6.

SIZES: XS, S, M, L, XL
FABRIC: 93% nylon/6% polyester/1% spandex.
OFFER DATE: 01/01/17
END DATE: 12/31/23

Game day sock with fold-over cuff, articulated foot specific footbed for superior fit and contrast Swoosh design trademark at ankle.

010 Black/(White) **018** Wolf Grey/(Black) **702** Volt/(Black)



**NIKE DRY PARK 20 BIB
DV7425 \$11.00**

SIZES: S, L, XXL
FABRIC: 100% polyester.
OFFER DATE: 01/01/23
END DATE: 12/31/25

Find your focus on the field with the Nike Dri-FIT Park Training Bib. Breathable, sweat-wicking mesh helps keep you dry and cool when scrimmage heats up.

- | | | |
|-------------------------------|---------------------------------|-------------------------------|
| 100 White/(Black) | 313 Action Green/(Black) | 406 Photo Blue/(Black) |
| 616 Vivid Pink/(Black) | 702 Volt/(Black) | |

**NIKE DRY PARK 20 BIB NOW SOLD AS SINGLE UNITS.
\$11.00 PRICE REFLECTS YOUR PER UNIT COST.**



**NIKE DRI-FIT REFEREE II LS JERSEY
DH8027 \$82.00**

SIZES: S, M, L, XL, 2XL
FABRIC: 100% polyester.
OFFER DATE: 01/01/22
END DATE: 12/31/25

The Nike Dri-FIT Jersey is made with sweat-wicking fabric to help keep you cool and comfortable, and 2 large pockets offer plenty of room for pens, penalty cards, and more.

010 Black/(White) **702** Volt/(Black)



**NIKE DRI-FIT REFEREE II SS JERSEY
DH8024 \$77.00**

SIZES: S, M, L, XL, 2XL
FABRIC: 100% polyester.
OFFER DATE: 01/01/22
END DATE: 12/31/25

The Nike Dri-FIT Jersey is made with sweat-wicking fabric to help keep you cool and comfortable, and 2 large pockets offer plenty of room for pens, penalty cards, and more.

010 Black/(White) **702** Volt/(Black)



**NIKE DRI-FIT REFEREE SHORT
AA0737 \$52.00**

SIZES: S, M, L, XL, 2XL
FABRIC: 100% polyester.
OFFER DATE: 01/01/22
END DATE: 12/31/25

The Nike Dri-FIT Shorts are made with sweat-wicking fabric to help keep you cool and comfortable for the full 90 minutes. **Inseam length: 8.25"**.

010 Black/Black/(Anthracite)



NEW
NIKE STORM-FIT STRIKE 24 DRILL TOP
FD7587 \$105.00

SIZES: XS, S, M, L, XL, 2XL, 3XL

FABRIC: 100% polyester.

OFFER DATE: 01/01/24

END DATE: 12/31/25



Sustainable Materials

010 Black/Black/White/(White)

455 Obsidian/Obsidian/White/(White)

467 Royal Blue/Royal Blue/White/(White)

657 University Red/University Red/Black/(White)

KIDS / FD7591 / XS-XL / \$105.00



BACK VIEWS TO SHOW SLEEVE COLORS

NEW
NIKE DRI-FIT STRIKE 24 DRILL TOP K
FD7569 \$75.00

SIZES: XS, S, M, L, XL, 2XL, 3XL
FABRIC: Body: 91% polyester/9% spandex. Panels: 100% polyester.
OFFER DATE: 01/01/24
END DATE: 12/31/25

Suit up your team for training in the 2024 Strike Drill Top. Lightweight ribbed material on back of the neck, shoulders and down through the arms. Body and sleeves are a Nike Dri-FIT knit fabric that moves sweat away to help keep players dry. This top is made with at least 75% recycled material and the side panel construction uses a more efficient pattern to help reduce material waste. Slim fit for a tailored feel. Thumb loop at the end of sleeve opening.

- 010** Black/Black/White/(White)
- 455** Obsidian/Obsidian/White/(White)
- 467** Royal Blue/Royal Blue/White/(White)
- 657** University Red/University Red/Black/(White)

KIDS / FD7573 / XS-XL / \$75.00



NEW
NIKE DRI-FIT STRIKE 24 PANT KPZ
FD7574 \$75.00

SIZES: XS, S, M, L, XL, 2XL, 3XL
FABRIC: Body: 91% polyester/9% elastane. Panels: 100% polyester. Mesh: 100% polyester.
OFFER DATE: 01/01/24
END DATE: 12/31/25

The Nike Dri-FIT Strike 24 Pant is designed to keep your players comfortable during chilly training sessions and pregame warmups. Lightweight rib material on the lower leg to enable mobility and range of motion. Body is a Nike Dri-FIT knit fabric that moves sweat away to help keep players dry. This pant is made with at least 75% recycled material and the interior gusset construction helps reduce material waste. Slim fit for a tailored look and feel. Zippered pockets for secure storage. Lower ankle zipper allows for easy removal over cleats.

- 010** Black/(White)
- 451** Obsidian/(White)

KIDS / FD7578 / XS-XL / \$75.00



NEW
NIKE DRI-FIT STRIKE 24 SS TOP K
FD7487 \$45.00

SIZES: XS, S, M, L, XL, 2XL, 3XL
FABRIC: 100% polyester.
OFFER DATE: 01/01/24 **END DATE:** 12/31/25

Suit up your team for training in the 2024 Strike Top. Lightweight ribbed material on back of the neck, shoulders and down through the arms. Body and sleeves are a Nike Dri-FIT knit fabric that moves sweat away to help keep players dry. This top is made with 100% recycled material and the side panel construction uses a more efficient pattern to help reduce material waste. Standard fit for classic feel and comfort.

- 010** Black/White/Black/(White)
- 458** Obsidian/White/Obsidian/(White)
- 465** Royal Blue/White/Royal Blue/(White)
- 657** University Red/Black/University Red/(White)

KIDS / FD7493 / XS-XL / \$45.00



NEW
NIKE DRI-FIT STRIKE 24 SHORT KZ
FD7550 \$45.00

SIZES: XS, S, M, L, XL, 2XL, 3XL, ST, MT, LT, XLT, 2XLT, 3XLT
FABRIC: 100% polyester.
OFFER DATE: 01/01/24 **END DATE:** 12/31/25

The Nike Dri-FIT Strike Shorts have design details specifically tailored for soccer's rising stars. Lightweight ribbed material on the lower leg. Shorts are constructed with Nike Dri-FIT knit fabric that moves sweat away to help keep players dry. This product made with 100% recycled material. Side panel and gusset construction use a more efficient pattern to help reduce material waste. Standard fit for classic feel and comfort. Zippered pockets for secure storage. **Inseam length: 8.25"**.

- 010** Black/(White)
- 451** Obsidian/(White)

KIDS / FD7566 / XS-XL / \$45.00



NIKE DRI-FIT KNIT STRIKE 23 HOODED TRACK JACKET
DR2571 \$82.00

SIZES: S, M, L, XL, 2XL
FABRIC: Body/hood lining: 100% polyester. Panels: 94% polyester/6% spandex.
OFFER DATE: 01/01/23
END DATE: 12/31/23

The Nike Dri-FIT Strike Track Jacket has design details specifically tailored for soccer's rising stars. A slim, streamlined fit ensures that nothing comes between you and the ball, and sweat-wicking fabric helps keep you cool and composed while you're fine-tuning your skills. Full-zip design. Zippered front pockets. Drawcord at hood.

- | | |
|--|---|
| 010 Black/Black/Anthracite/(White) | 100 White/Wolf Grey/White/(Black) |
| 329 Green Spark/Lucky Green/Green Spark/(White) | 451 Obsidian/Obsidian/Royal Blue/(White) |
| 463 Royal Blue/Obsidian/Royal Blue/(White) | 658 University Red/University Red/Bright Crimson/(White) |

KIDS / DR2575 / XS-XL / \$82.00



**NIKE DRI-FIT STRIKE 23 DRILL TOP
DR2294 \$72.00**

SIZES: S, M, L, XL, 2XL
FABRIC: Body: 91% polyester/9% spandex. Panels: 94% polyester/6% spandex.
OFFER DATE: 01/01/23
END DATE: 12/31/23

The Nike Dri-FIT Strike Drill Top has design details specifically tailored for soccer's rising stars. A slim, streamlined fit ensures that nothing comes between you and the ball, and sweat-wicking fabric helps keep you cool and composed while you're fine-tuning your skills. 1/4-zip design.

- | | |
|--|---|
| 010 Black/Black/Anthracite/(White) | 100 White/Wolf Grey/White/(Black) |
| 329 Green Spark/Lucky Green/Green Spark/(White) | 451 Obsidian/Obsidian/Royal Blue/(White) |
| 463 Royal Blue/Obsidian/Royal Blue/(White) | 658 University Red/University Red/Bright Crimson/(White) |

KIDS / DR2304 / XS-XL / \$72.00



**NIKE DRI-FIT STRIKE 23 PANT KPZ
DR2563 \$72.00**

SIZES: S, M, L, XL, 2XL
FABRIC: Body: 91% polyester/9% spandex. Panels: 94% polyester/6% spandex. Mesh: 100% polyester.
OFFER DATE: 01/01/23
END DATE: 12/31/23

The Nike Dri-FIT Strike Pants have design details specifically tailored for soccer's rising stars. A slim, streamlined fit ensures that nothing comes between you and the ball, and sweat-wicking fabric helps keep you cool and composed while you're fine-tuning your skills. Front pockets. Zippers on the lower legs make it easy to change over cleats or shoes. Elastic waistband with drawcord.

- | | |
|---|---|
| 010 Black/Black/Anthracite/(White) | 451 Obsidian/Obsidian/Royal Blue/(White) |
|---|---|

KIDS / DR2570 / XS-XL / \$72.00



**NIKE DRI-FIT STRIKE 23 SS TOP
DR2276 \$42.00**

SIZES: S, M, L, XL, 2XL
FABRIC: 100% polyester.
OFFER DATE: 01/01/23
END DATE: 12/31/23

The Nike Dri-FIT Strike Top has design details specifically tailored for soccer's rising stars. A slim, streamlined fit ensures that nothing comes between you and the ball, and sweat-wicking fabric works with mesh underarm insets to help keep you dry, cool and composed while you're fine-tuning your skills.

- 010** Black/Anthracite/(White)
- 329** Green Spark/Lucky Green/(White)
- 463** Royal Blue/Obsidian/(White)
- 100** White/Wolf Grey/(Black)
- 451** Obsidian/Royal Blue/(White)
- 658** University Red/Bright Crimson/(White)

KIDS / DR2287 / XS-XL / \$42.00



**NIKE DRI-FIT STRIKE 23 SHORT KZ
DR2332 \$52.00**

SIZES: S, M, L, XL, 2XL
FABRIC: 100% polyester.
OFFER DATE: 01/01/23
END DATE: 12/31/23

The Nike Dri-FIT Strike Shorts have design details specifically tailored for soccer's rising stars. A slim, streamlined fit ensures that nothing comes between you and the ball, and sweat-wicking fabric works with mesh insets to help keep you dry, cool and composed while you're fine-tuning your skills. Zippered side pockets. Elastic waistband with drawcord.

- 010** Black/Anthracite/(White)
- 451** Obsidian/Royal Blue/(White)

KIDS / DR2560 / XS-XL / \$52.00



SIDE VIEW

NEW
NIKE DRI-FIT ACADEMY PRO 24 TRACK JACKET K
FD7681 \$65.00

SIZES: XS, S, M, L, XL, 2XL, 3XL
FABRIC: 100% polyester.
OFFER DATE: 01/01/24
END DATE: 12/31/25

Help your team look and train like the pros. The Nike Dri-FIT Academy Pro 24 Track Jacket is designed to keep your players comfortable during chilly training sessions and pre-game warmups. Body is a Nike Dri-FIT knit fabric that moves sweat away to help keep players dry. This jacket is made with 100% recycled material and the back panel construction uses a more efficient pattern to help reduce material waste. Slim fit for a tailored look and feel. Zippered pockets for secure storage.

- 010** Black/Black/Black/(White)
- 455** Obsidian/Obsidian/Obsidian/(White)
- 657** University Red/University Red/University Red/(White)
- 329** Green Spark/Green Spark/Green Spark/(White)
- 468** Royal Blue/Royal Blue/Royal Blue/(White)

KIDS / FD7685 / XS-XL / \$65.00



NEW
NIKE DRI-FIT ACADEMY PRO 24 DRILL TOP K
FD7667 \$60.00

SIZES: XS, S, M, L, XL, 2XL, 3XL
FABRIC: 100% polyester.
OFFER DATE: 01/01/24
END DATE: 12/31/25

Help your team look and train like the pros in the Nike Dri-FIT Academy Pro 24 Drill Top. Lightweight ribbed material on back of the neck, shoulders and down through the arms. Body and sleeves are a Nike Dri-FIT knit fabric that moves sweat away to help keep players dry. This top is made with at least 100% recycled material. Back and side panel construction use a more efficient pattern to help reduce material waste. Standard fit for classic feel and comfort. Thumb loop at the end of sleeve opening.

- 010** Black/Black/White/(White)
- 455** Obsidian/Obsidian/White/(White)
- 657** University Red/University Red/Black/(White)
- 329** Green Spark/Green Spark/White/(White)
- 467** Royal Blue/Royal Blue/White/(White)

KIDS / FD7671 / XS-XL / \$60.00



NEW
NIKE DRI-FIT ACADEMY PRO 24 PANT KPZ
FD7672 \$60.00

SIZES: XS, S, M, L, XL, 2XL, 3XL
FABRIC: 100% polyester.
OFFER DATE: 01/01/24
END DATE: 12/31/25

Help your team look and train like the pros. The Nike Dri-FIT Academy Pro 24 Pant is designed to keep your players comfortable during chilly training sessions and pre-game warmups. Lightweight rib material on the lower leg to help enable mobility and range of motion. Body is a Nike Dri-FIT knit fabric that moves sweat away to help keep players dry. This pant is made with at least 75% recycled material and the interior gusset construction helps reduce material waste. Slim fit for tailored look and feel. Zippered pockets for secure storage. Lower ankle zipper allows for easy removal over cleats.

- 010** Black/(White)
- 451** Obsidian/(White)

KIDS / FD7679 / XS-XL / \$60.00



NEW
NIKE DRI-FIT ACADEMY PRO 24 SS TOP K
FD7592 \$35.00

SIZES: XS, S, M, L, XL, 2XL, 3XL
FABRIC: 100% polyester.
OFFER DATE: 01/01/24
END DATE: 12/31/25

Help your team look and train like the pros in the Nike Dri-FIT Academy Pro 24 SS Top K. Lightweight rib material on the front and back neck wrapping the shoulders to the armhole. Body and sleeves are a Nike Dri-FIT knit fabric that moves sweat away to help keep players dry. This top is made with 100% recycled material and the side panel construction uses a more efficient pattern to help reduce material waste. Slim fit for a tailored look and feel.

- 010** Black/White/Black/(White)
- 458** Obsidian/White/Obsidian/(White)
- 657** University Red/Black/University Red/(White)
- 329** Green Spark/White/Green Spark/(White)
- 465** Royal Blue/White/Royal Blue/(White)

KIDS / FD7597 / XS-XL / \$35.00



NEW
NIKE DRI-FIT ACADEMY PRO 24 SHORT KZ
FD7653 \$35.00

SIZES: XS, S, M, L, XL, 2XL, 3XL, ST, MT, LT, XLT, 2XLT, 3XLT
FABRIC: 100% polyester.
OFFER DATE: 01/01/24
END DATE: 12/31/25

Help your team look and train like the pros in the Nike Dri-FIT Academy Pro 24 Short KZ. Lightweight ribbed material on the lower leg to help enable mobility and range of motion. Shorts are constructed with Dri-FIT knit fabric that moves sweat away to help keep players dry. This product made with 100% recycled material. Side panel and gusset construction use a more efficient pattern to help reduce material waste. Standard fit for classic feel and comfort. Zippered pockets for secure storage. **Inseam length: 8.25"**.

- 010** Black/(White)
- 451** Obsidian/(White)

KIDS / FD7657 / XS-XL / \$35.00



NIKE DRI-FIT KNIT ACADEMY 23 TRACK JACKET
DR1681 \$57.00

SIZES: S, M, L, XL, 2XL
FABRIC: Body/panels/pocket bags: 100% polyester. Rib: 97% polyester/3% spandex.
OFFER DATE: 01/01/23
END DATE: 12/31/24

Every journey to greatness begins with mastering the fundamentals. But make no mistake, the Nike Dri-FIT Academy Full-Zip Track Jacket is anything but basic. It combines sweat-wicking fabric with mesh insets to help keep you dry and comfortable during your pre-match or training routine. Mesh at the shoulders, sleeves and sides adds breathability. Ribbed cuffs and hem help hold the jacket in place while you move. Zippered front pockets. Embroidered Swoosh design trademark.

- | | |
|--|--|
| 010 Black/White/(White) | 100 White/Black/(Black) |
| 329 Green Spark/Lucky Green/(White) | 451 Obsidian/Royal Blue/(White) |
| 452 Obsidian/Volt/(White) | 463 Royal Blue/Obsidian/(White) |
| 657 University Red/Gym Red/(White) | 719 Tour Yellow/University Gold/(Black) |

KIDS / DR1695 / XS-XL / \$57.00



NIKE DRI-FIT ACADEMY 23 DRILL TOP
DR1352 \$52.00

SIZES: S, M, L, XL, 2XL
FABRIC: 100% polyester.
OFFER DATE: 01/01/23
END DATE: 12/31/24

Every journey to greatness begins with mastering the fundamentals. But make no mistake, the Nike Dri-FIT Academy Drill Top is anything but basic. It combines sweat-wicking fabric with mesh insets to help keep you dry and comfortable during your pre-match or training routine. Thumb straps at the cuffs help hold the sleeves in place while you move. 1/4-zip design with mock neck. Embroidered Swoosh design trademark.

- | | |
|--|--|
| 010 Black/White/(White) | 100 White/Black/(Black) |
| 329 Green Spark/Lucky Green/(White) | 451 Obsidian/Royal Blue/(White) |
| 452 Obsidian/Volt/(White) | 463 Royal Blue/Obsidian/(White) |
| 657 University Red/Gym Red/(White) | 719 Tour Yellow/University Gold/(Black) |

KIDS / DR1356 / XS-XL / \$52.00



**NIKE DRI-FIT ACADEMY 23 SS TOP
DR1336 \$27.00**

SIZES: S, M, L, XL, 2XL
FABRIC: 100% polyester.
OFFER DATE: 01/01/23
END DATE: 12/31/24

Every journey to greatness begins with mastering the fundamentals. But make no mistake, the Nike Dri-FIT Academy Short Sleeve Top is anything but basic. It combines sweat-wicking fabric with breathable mesh to help keep you dry and cool during your pre-match or training routine. Embroidered Swoosh design trademark.

- | | |
|--|--|
| 010 Black/White/(White) | 100 White/Black/(Black) |
| 329 Green Spark/Lucky Green/(White) | 451 Obsidian/Royal Blue/(White) |
| 452 Obsidian/Volt/(White) | 463 Royal Blue/Obsidian/(White) |
| 657 University Red/Gym Red/(White) | 719 Tour Yellow/University Gold/(Black) |

KIDS / DR1343 / XS-XL / \$27.00



**NIKE DRI-FIT ACADEMY 23 SL TOP
DR1331 \$27.00**

SIZES: S, M, L, XL, 2XL
FABRIC: 100% polyester.
OFFER DATE: 01/01/23
END DATE: 12/31/24

Every journey to greatness begins with mastering the fundamentals. But make no mistake, the Nike Dri-FIT Academy Sleeveless Top is anything but basic. It combines sweat-wicking fabric with breathable mesh to help keep you dry and cool during your pre-match or training routine. Embroidered Swoosh design trademark.

- | | |
|--|--|
| 010 Black/White/(White) | 100 White/Black/(Black) |
| 329 Green Spark/Lucky Green/(White) | 451 Obsidian/Royal Blue/(White) |
| 452 Obsidian/Volt/(White) | 463 Royal Blue/Obsidian/(White) |
| 657 University Red/Gym Red/(White) | 719 Tour Yellow/University Gold/(Black) |

KIDS / DR1335 / XS-XL / \$27.00



**NIKE DRI-FIT ACADEMY 23 PANT KPZ
DR1666 \$52.00**

SIZES: S, M, L, XL, 2XL
FABRIC: 100% polyester.
OFFER DATE: 01/01/23
END DATE: 12/31/24

Every journey to greatness begins with mastering the fundamentals. But make no mistake, the Nike Dri-FIT Academy Pants are anything but basic. They combine sweat-wicking fabric with mesh side stripes to help keep you dry and cool during your pre-match or training routine. Zippers on the lower legs make it easy to change over cleats or shoes. Zippered side pockets. Elastic waistband with drawcord. Embroidered Swoosh design trademark.

010 Black/Black/(White)

451 Obsidian/Obsidian/(White)

KIDS / DR1676 / XS-XL / \$52.00



Sustainable Materials



BACK VIEW

**NIKE DRI-FIT ACADEMY 23 SHORT K
DR1360 \$27.00**

SIZES: S, M, L, XL, 2XL
FABRIC: 100% polyester.
OFFER DATE: 01/01/23
END DATE: 12/31/24

Every journey to greatness begins with mastering the fundamentals. But make no mistake, the Nike Dri-FIT Academy Shorts are anything but basic. They combine sweat-wicking fabric with mesh side stripes to help keep you dry and cool during your pre-match or training routine. Elastic waistband with drawcord. Embroidered Swoosh design trademark.

010 Black/Black/(White)

451 Obsidian/Obsidian/(White)

KIDS / DR1364 / XS-XL / \$27.00



Sustainable Materials



**NIKE DRI-FIT ACADEMY PRO TRACK JACKET K
DH9234 \$64.00**

SIZES: S, M, L, XL, 2XL
FABRIC: 100% polyester.
OFFER DATE: 01/01/22
END DATE: 12/31/23

After conquering the basics, take your skills to the next level with the Nike Dri-FIT Academy Pro Jacket. A relaxed, easy fit works together with moisture-wicking fabric to help keep sweat off your skin when your training heats up.

- | | |
|---|---|
| 010 Black/Volt/(White) | 011 Black/Anthracite/(White) |
| 354 Hyper Turq/Washed Teal/(White) | 451 Obsidian/Royal Blue/(White) |
| 463 Royal Blue/Obsidian/(White) | 635 Bright Crimson/Black/(White) |

KIDS / DH9283 / XS-XL / \$64.00



**NIKE DRI-FIT ACADEMY PRO PANT KPZ
DH9240 \$60.00**

SIZES: S, M, L, XL, 2XL
FABRIC: 100% polyester.
OFFER DATE: 01/01/22
END DATE: 12/31/23

After conquering the basics, take your skills to the next level with the Nike Dri-FIT Academy Pro Pants. A relaxed, easy fit works together with moisture-wicking fabric to help keep sweat off your skin when your training heats up.

- | | |
|-------------------------------------|--|
| 014 Black/Anthracite/(White) | 451 Obsidian/Royal Blue/(White) |
|-------------------------------------|--|

KIDS / DH9325 / XS-XL / \$60.00



BACK VIEW

**NIKE DRI-FIT ACADEMY PRO PO HOODIE K
DH9232 \$62.00**

SIZES: S, M, L, XL, 2XL
FABRIC: 100% polyester.
OFFER DATE: 01/01/22
END DATE: 12/31/23

After conquering the basics, take your skills to the next level with the Nike Dri-FIT Academy Pro Hoodie. A relaxed, easy fit works together with moisture-wicking fabric to help keep sweat off your skin when your training heats up.

- | | |
|---|--|
| 010 Black/Volt/(White) | 011 Black/Anthracite/(White) |
| 354 Hyper Turq/Washed Teal/(White) | 451 Obsidian/Royal Blue/(White) |
| 463 Royal Blue/Obsidian/(White) | 635 Bright Crimson/University Red/(White) |

KIDS / DH9281 / XS-XL / \$62.00



**NIKE DRI-FIT ACADEMY PRO DRILL TOP K
DH9230 \$60.00**

SIZES: S, M, L, XL, 2XL
FABRIC: 100% polyester.
OFFER DATE: 01/01/22
END DATE: 12/31/23

After conquering the basics, take your skills to the next level with the Nike Dri-FIT Academy Pro Top. A relaxed, easy fit works together with moisture-wicking fabric to help keep sweat off your skin when your training heats up.

- | | |
|---|--|
| 010 Black/Volt/(White) | 011 Black/Anthracite/(White) |
| 354 Hyper Turq/Washed Teal/(White) | 451 Obsidian/Royal Blue/(White) |
| 463 Royal Blue/Obsidian/(White) | 635 Bright Crimson/University Red/(White) |

KIDS / DH9280 / XS-XL / \$60.00



**NIKE DRI-FIT SS ACADEMY PRO TOP K
DH9225 \$32.00**

SIZES: S, M, L, XL, 2XL
FABRIC: 100% polyester.
OFFER DATE: 01/01/22
END DATE: 12/31/23

After conquering the basics, take your skills to the next level with the Nike Dri-FIT Academy Pro Top. A relaxed, easy fit works together with moisture-wicking fabric to help keep sweat off your skin when your training heats up.

- | | |
|---|--|
| 010 Black/Volt/(White) | 011 Black/Anthracite/(White) |
| 354 Hyper Turq/Washed Teal/(White) | 451 Obsidian/Royal Blue/(White) |
| 463 Royal Blue/Obsidian/(White) | 635 Bright Crimson/University Red/(White) |

KIDS / DH9277 / XS-XL / \$32.00



**NIKE DRI-FIT ACADEMY PRO SHORT KZ
DH9238 \$32.00**

SIZES: S, M, L, XL, 2XL
FABRIC: 100% polyester.
OFFER DATE: 01/01/22
END DATE: 12/31/23

After conquering the basics, take your skills to the next level with the Nike Dri-FIT Academy Pro Shorts with pockets. A slim fit works together with moisture-wicking fabric to help keep sweat off your skin when your training heats up. **Inseam length: 8.5"**.

- 014** Black/Anthracite/(White)

KIDS / DH9287 / XS-XL / \$32.00



BACK VIEW

NEW
NIKE THERMA-FIT ACADEMY PRO 24
SDF JACKET
FD7709 \$185.00

SIZES: XS, S, M, L, XL, 2XL, 3XL
 FABRIC: 100% polyester.
 OFFER DATE: 01/01/24
 END DATE: 12/31/25

010 Black/(White) **451** Obsidian/(White)

KIDS / FD7714 / XS-XL / \$185.00



NEW
NIKE THERMA-FIT ACADEMY PRO 24
FALL JACKET
FD7702 \$155.00

SIZES: XS, S, M, L, XL, 2XL, 3XL
 FABRIC: 100% polyester.
 OFFER DATE: 01/01/24
 END DATE: 12/31/25

010 Black/(White) **451** Obsidian/(White)

KIDS / FD7708 / XS-XL / \$155.00



**NIKE STORM-FIT ACADEMY HOODED
RAIN JACKET
DJ6301 \$95.00**

SIZES: S, M, L, XL, 2XL
FABRIC: 100% polyester.
OFFER DATE: 01/01/23
END DATE: 12/31/23

Prepare for unpredictable conditions with the Nike Storm-FIT Jacket. Water-repellent fabric in a longer length gives you excellent coverage to keep you dry during warmups or training. With a roomy fit, it goes on easily over your gear when the weather bares its teeth. Drawcord at hood. Side pockets.

010 Black/(White)

451 Obsidian/(White)

KIDS / DJ6324 / XS-XL / \$95.00



**NIKE SYN FL REPEL PARK 20 SDF JACKET
CW6156 \$157.00**

SIZES: S, M, L, XL, 2XL, 3XL, 4XL
FABRIC: 100% polyester.
OFFER DATE: 01/01/21
END DATE: 12/31/25

Whether you're training or competing, the Nike Repel Park Jacket is built to keep you dry thanks to a water-resistant coating. Lightweight insulation and a longer length help keep you warm in cold conditions. Water-repellent finish helps keep you dry when it starts to rain. Synthetic fill provides lightweight warmth. Elongated, full-zip design covers you from the elements.

010 Black/(White) **451** Obsidian/(White)

KIDS / CW6158 / XS-XL / \$157.00



**NIKE THERMA REPEL PARK 20 FALL JACKET
CW6157 \$127.00**

SIZES: S, M, L, XL, 2XL
FABRIC: 100% polyester.
OFFER DATE: 01/01/21
END DATE: 12/31/25

The Nike Therma Repel Park Jacket is a lightweight layer designed for days when you have to brave rainy, windy weather. A water-repellent finish helps keep you dry while you're competing or training. Water-repellent fabric helps keep you dry when the elements turn. Elongated zipper hits above your chin for extra coverage. Elastic cuffs and hem help keep the jacket in place as you move. Snap pockets let you secure your essentials.

010 Black/(White) **451** Obsidian/(White)

KIDS / CW6159 / XS-XL / \$127.00



**NIKE PARK 20 RAIN JACKET
BV6881 \$50.00**

SIZES: S, M, L, XL, 2XL
FABRIC: 100% polyester.
OFFER DATE: 01/01/20
END DATE: 12/31/25

Dri-FIT training jacket updated woven fabric and mesh lined pockets, standard fit with soft hand feel woven fabric to keep you dry, pockets with mesh lining for storage – subtle piping details for modern, but clean finish.

Body width: 22.4", Body length: 29.1" (size large).

- | | | |
|-------------------------------------|--|-----------------------------------|
| 010 Black/White/(White) | 060 Anthracite/Anthracite/(White) | 410 Obsidian/White/(White) |
| 463 Royal Blue/White/(White) | 657 University Red/White/(White) | |

KIDS / BV6904 / XS-XL / \$50.00



**NIKE DRY PARK 20 TRACK JACKET
FJ3022 \$50.00**

SIZES: S, M, L, XL, 2XL
FABRIC: 100% polyester.
OFFER DATE: 01/01/20
END DATE: 12/31/25

Dri-FIT jacket, full zip, pockets with mesh for storage standard fit with soft hand feel updated fit for better mobility/comfort football – subtle piping details for modern, but clean finish.

Body width: 19.9", Body length: 29.3" (size large).

- | | | |
|---|-----------------------------------|-------------------------------------|
| 010 Black/White/(White) | 410 Obsidian/White/(White) | 463 Royal Blue/White/(White) |
| 657 University Red/White/(White) | | |

KIDS / FJ3026 / XS-XL / \$50.00



**NIKE DRY PARK 20 CREW TOP
FJ3004 \$45.00**

SIZES: S, M, L, XL, 2XL
FABRIC: 100% polyester.
OFFER DATE: 01/01/20
END DATE: 12/31/25

Long sleeve top training top, Dri-FIT brushed body (front and back panel) for warmth, un-brushed sleeves to keep you cool and mobile, shoulder seam moved forward for comfort, standard fit top with soft hand feel brushed body (front and back panel) – subtle piping details for modern, but clean finish.

Body width: 20.9", Body length: 28.7" (size large).

- 010** Black/White/(White) **410** Obsidian/White/(White) **463** Royal Blue/White/(White)
657 University Red/White/(White)

KIDS / FJ3008 / XS-XL / \$45.00



Sustainable Materials



**NIKE DRY PARK 20 SS TOP
BV6883 \$22.00**

SIZES: S, M, L, XL, 2XL
FABRIC: 100% polyester.
OFFER DATE: 01/01/20
END DATE: 12/31/25

Short sleeve training top, Dri-FIT all over performance polyester, rib collar, standard fit with soft hand feel updated fit for better mobility/comfort, shoulder seams rolled forward for comfort, all over performance polyester – subtle piping details for modern, but clean finish.

Body width: 19.9", Body length: 28.7" (size large).

- 010** Black/White/(White) **410** Obsidian/White/(White) **463** Royal Blue/White/(White)
657 University Red/White/(White)

KIDS / BV6905 / XS-XL / \$22.00



Sustainable Materials



**NIKE DRY PARK 20 SHORT KZ
CW6152 \$32.00**

SIZES: S, M, L, XL, 2XL
FABRIC: 100% polyester.
OFFER DATE: 01/01/22
END DATE: 12/31/25

Inseam length: 9".

- 010** Black/White/(White) **451** Obsidian/White/(White)



Sustainable Materials



**NIKE DRY PARK LS FIRSTLAYER JERSEY
AV2609 \$32.00**

SIZES: S, M, L, XL, 2XL
FABRIC: 100% polyester.
OFFER DATE: 01/01/20
END DATE: 12/31/25

When you need a little extra warmth, the Nike Dri-FIT Park First Layer Jersey provides coverage that won't cut down your speed. The stretchy fabric and Invisible Thumb Loops create a streamlined layer that moves smoothly below your kit. Modified V-neck sits flush against the body below an outer-layer. Tight fit gives a streamlined look and feel. Raglan sleeves eliminate the shoulder seam to help you move freely. Invisible Thumb Loops keep hands covered and warm, but stay hidden when not in use. Swoosh design trademark is heat transferred on the center of the chest.
Body width: 19.9", Body length: 30" (size large).

010 Black/(White) **100** White/(Cool Grey) **410** Midnight Navy/(White)

KIDS / AV2611 / XS-XL / \$32.00



**NIKE DRY PARK 20 PANT
FJ3017 \$35.00**

SIZES: S, M, L, XL, 2XL **FABRIC:** 100% polyester.
OFFER DATE: 01/01/20 **END DATE:** 12/31/25

Dri-FIT stretch training pant, rib on calf for easy on and off access, standard fit with soft hand feel updated fit for better mobility/comfort – tonal piping details for modern, but clean finish.
Hip width: 21.7", Inseam length: 29.5" (size medium).

010 Black/Black/(White) **410** Obsidian/Obsidian/(White)

KIDS / FJ3021 / XS-XL / \$35.00 / Inseam length: 23.5" (size medium)





NIKE CLUB TEAM SWOOSH ROLLER BAG 3.0
BA5199 \$95.00

SIZES: Misc OFFER DATE: 01/01/20

010 Black/Black/(White)



NIKE ACADEMY TEAM BACKPACK 2.3
DV0761 \$57.00

SIZES: Misc OFFER DATE: 07/01/22 END DATE: 12/31/25

Tough 600D polyester • Large dual-zippered main compartment • Zippered wet/dry compartment • Laser perforations help enhance ventilation • Haul loop at top for alternative carry option • Padded curved shoulder straps • Padded back panel • Mesh side pocket for water bottle storage • Front pocket holds up to a size 5 ball
DIMENSIONS: 19" H x 14" W x 6.5" D

- 010 Black/Black/(White)
- 065 Cool Grey/Cool Grey/(White)
- 410 Midnight Navy/Midnight Navy/(White)
- 480 Game Royal/Game Royal/(White)
- 657 University Red/University Red/(White)



NIKE BRASILIA LARGE DUFFEL 9.5
DO9193 \$52.00

SIZES: Misc OFFER DATE: 07/01/22 END DATE: 07/01/25

Tough 600D polyester • Durable 300D polyester • Detachable shoulder strap • Ventilated shoe or wet/dry storage • Secure zip pocket • Limited lifetime guarantee • Screened Swoosh design trademark
DIMENSIONS: 28" L x 12" W x 14" H

010 Black/Black/(White)



NIKE BRASILIA BACKPACK XL 9.5
DM3975 \$50.00

SIZES: Misc OFFER DATE: 07/01/22 END DATE: 07/01/25

Tough 600D polyester • Durable 300D polyester • Multiple pockets for organization • Water bottle pocket • Screened Swoosh branding
DIMENSIONS: 19" H x 13" W x 10.5" D

- 010 Black/Black/(White)
- 068 Iron Grey/Black/(White)
- 410 Midnight Navy/Black/(White)



NIKE BRASILIA MEDIUM BACKPACK 9.5
DH7709 \$45.00

SIZES: Misc OFFER DATE: 07/01/22 END DATE: 07/01/25

Durable, heavyweight 600D polyester • Large zippered main compartment • Medium-sized zippered compartment • Interior small-item zippered pocket • Separate, padded internal sleeve • Padded shoulder strap • Side mesh pockets • Limited lifetime guarantee • Screened Swoosh design trademark
DIMENSIONS: 18" H x 12" W x 7" D

- 010 Black/Black/(White)
- 068 Iron Grey/Black/(White)
- 410 Midnight Navy/Black/(White)



NIKE BRASILIA MEDIUM DUFFEL 9.5
DH7710 \$42.00

SIZES: Misc OFFER DATE: 07/01/22 END DATE: 07/01/25

Tough 600D polyester • Durable 300D polyester • Detachable shoulder strap • Ventilated shoe or wet/dry storage • Secure zip pocket • Limited lifetime guarantee • Screened Swoosh design trademark
DIMENSIONS: 24" L x 11" W x 13" H

- 010 Black/Black/(White)
- 068 Iron Grey/Black/(White)
- 410 Midnight Navy/Black/(White)



NIKE BRASILIA SMALL DUFFEL 9.5
DM3976 \$37.00

SIZES: Misc **OFFER DATE:** 07/01/22 **END DATE:** 07/01/25
 Tough 600D polyester • Durable 300D polyester • Detachable shoulder strap
 • Ventilated shoe or wet/dry storage • Secure zip pocket • Limited lifetime guarantee
 • Screened Swoosh design trademark
DIMENSIONS: 20" L x 10" W x 11" H

- 010** Black/Black/(White) **068** Iron Grey/Black/(White)
- 410** Midnight Navy/Black/(White)



NIKE BRASILIA XSMALL DUFFEL 9.5
DM3977 \$32.00

SIZES: Misc **OFFER DATE:** 07/01/22 **END DATE:** 07/01/25
 Tough 600D polyester • Durable 300D polyester • Detachable shoulder strap
 • Ventilated shoe or wet/dry storage • Secure zip pocket • Limited lifetime guarantee
 • Screened Swoosh design trademark
DIMENSIONS: 20" L x 10" W x 11" H

- 010** Black/Black/(White) **410** Midnight Navy/Black/(White)



NIKE BRASILIA SHOE BAG 9.5
DM3982 \$22.00

SIZES: Misc **OFFER DATE:** 07/01/22 **END DATE:** 07/01/25
 The Nike Utility Shoe Tote helps keep your shoes separate from the rest of your gear between home, work and the gym. The ventilated design is made of tough fabric and includes an outside pocket and handles for convenience.
DIMENSIONS: 12" L x 6" W x 7" H

- 010** Black/Black/(White)



NIKE BRASILIA DRAWSTRING 9.5
DM3978 \$18.00

SIZES: Misc **OFFER DATE:** 07/01/22 **END DATE:** 07/01/25
 Tough 600D polyester • Durable 300D polyester • Drawstring closure / Easy access to contents • Zippered front pocket • Screened Swoosh branding
DIMENSIONS: 20" H x 15" W x 2" D

- 010** Black/Black/(White) **068** Iron Grey/Black/(White)
- 410** Midnight Navy/Black/(White)



**NIKE CLUB ELITE – TEAM
CU8057 (NFHS) \$62.00**

SIZE: 5 **OFFER DATE:** 01/01/21 **END DATE:** 01/01/24
FABRIC: 40% rubber/40% synthetic leather/15% synthetic/5% cotton.

100 White/Black/(Metallic Silver)



**NIKE FUTSAL PRO – TEAM
DH1992 \$42.00**

SIZE: Pro **OFFER DATE:** 01/01/21 **END DATE:** 12/31/23
FABRIC: 60% rubber/15% polyurethane/13% polyester/12% EVA.

100 White/Black/Silver/(Volt)



**NIKE PARK – TEAM
CU8033 \$22.00**

SIZE: 3, 4, 5 **OFFER DATE:** 01/01/23 **END DATE:** 12/31/23

101 White/Black/(Volt)

NIKE TEAM SPORTS – COLOR MATCHING CHART:

Many Nike Team colors have more than one name for the same color. This chart shows colors of the *same value with different names.*

TEAM WHITE	TEAM BLUE GREY	WOLF GREY	COOL GREY	DK STEEL GREY	FLINT GREY	DK GREY HEATHER	NATURAL BASEBALL/SOFTBALL ONLY	BIRCH
TEAM BLACK								
TEAM VEGAS GOLD TEAM GOLD	JERSEY GOLD	CHINO	TEAM BROWN	DK CINDER	ANTHRACITE	TEAM ANTHRACITE	OBSIDIAN	TEAM NAVY COLLEGE NAVY
MEDIUM OLIVE	VOLT	ACTION GREEN	LT GREEN SPARK	PINE GREEN	TEAM KELLY GREEN APPLE GREEN	TEAM DK GREEN GORGE GREEN	NOBLE GREEN	HYPER TURQUOISE
TEAM LT BLUE	VALOR BLUE	PHOTO BLUE	TEAM ROYAL BLUE	GAME ROYAL	TIDAL BLUE	AERO BLUE	BLUSTERY	MARINA
TEAM PURPLE	NEW ORCHID	PINKFIRE	VIVID PINK	BRIGHT CRIMSON	TEAM SCARLET UNIVERSITY RED	TEAM CRIMSON	GYM RED	TEAM RED
TEAM CARDINAL TEAM MAROON	TEAM DK MAROON DEEP MAROON	YELLOW STRIKE	TOUR YELLOW	DESERT ORANGE	TEAM BRIGHT GOLD SUNDOWN UNIVERSITY GOLD	BRIGHT CERAMIC	TEAM ORANGE	

[NIKETEAM.COM](https://www.niketeam.com)

