



# Chesil Court, SW3

£915,000 Leasehold

2 bedroom apartment for sale

## Description

A quiet, well-proportioned 2 double bedroom apartment in this popular Art Deco Portered building in the heart of Chelsea. Situated on the first floor (lift), this charming property has a balcony off the reception room and offers leafy views over St Loo Avenue. Chesil Court is one of the first purpose-built blocks in London, situated on Chelsea Manor Street which runs north-south from Kings Road to the river with a wide range of shops and restaurants nearby.

Tenure: Leasehold (139 years)

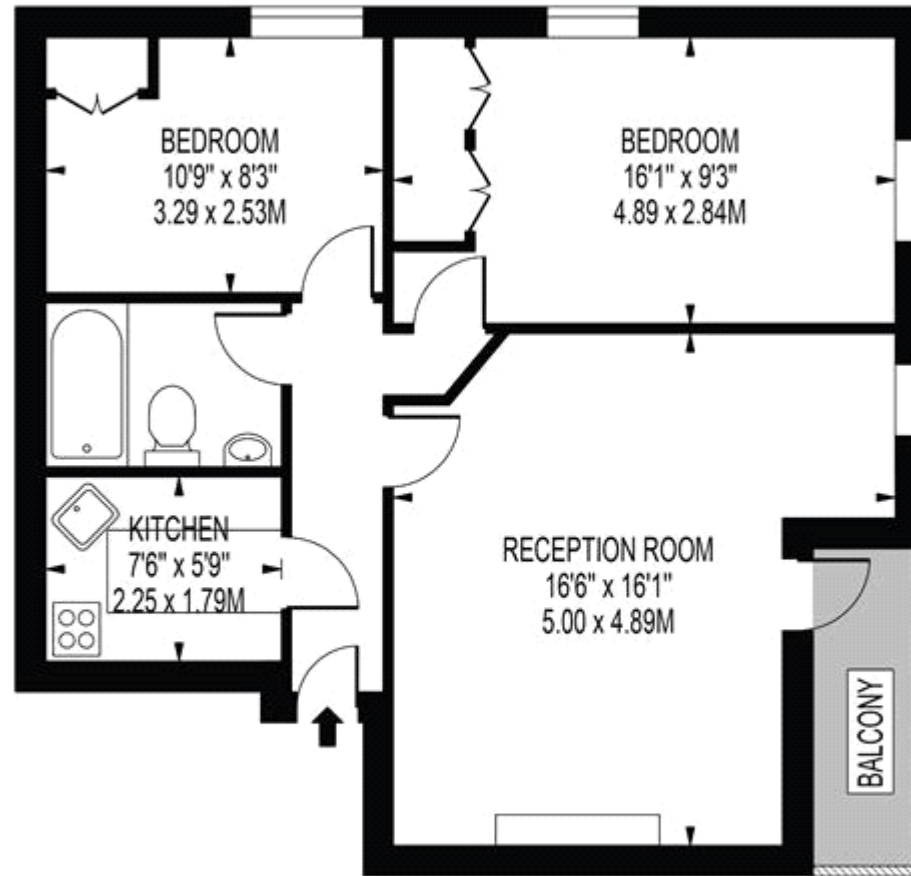
## Tenure

Leasehold (139 years)



# CHESIL COURT

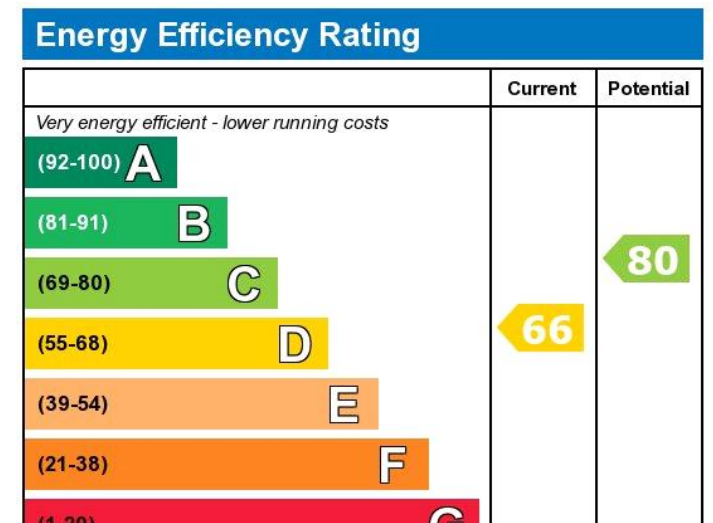
APPROXIMATE GROSS INTERNAL FLOOR AREA: 605 SQ FT - 56.23 SQ M



## FIRST FLOOR

FOR ILLUSTRATION PURPOSES ONLY

THIS FLOOR PLAN SHOULD BE USED AS A GENERAL OUTLINE FOR GUIDANCE ONLY AND DOES NOT CONSTITUTE IN WHOLE OR IN PART AN OFFER OR CONTRACT. ANY INTENDING PURCHASER OR LESSEE SHOULD SATISFY THEMSELVES BY INSPECTION, SEARCHES, ENQUIRIES AND FULL SURVEY AS TO THE CORRECTNESS OF EACH STATEMENT. ANY AREAS, MEASUREMENTS OR DISTANCES QUOTED ARE APPROXIMATE AND SHOULD NOT BE USED TO VALUE A PROPERTY OR BE THE BASIS OF ANY SALE OR LET.



Viewing by appointment only  
 Milton Stone - Head Office  
 53 Abingdon Road, London W8 6AN  
 Tel: 0207 938 2311 Email: [info@miltonstone.com](mailto:info@miltonstone.com) Website: [www.miltonstone.com](http://www.miltonstone.com)

