



MILTON  
STONE

# Redcliffe Gardens, London, SW10

£1,250,000 Share of Freehold

2 bedroom flat for sale

## Description

A spacious and impressive two double bedrooms, two bathrooms first floor apartment with a private balcony on Redcliffe Gardens.

- First floor
- Open plan kitchen/reception room with a 3m+ ceiling height
- Private balcony
- Main bedroom to the rear with en-suite bathroom and built in wardrobes
- Second double bedroom
- Separate shower room
- Share of Freehold
- As Previously furnished

Redcliffe Gardens is located between the Fulham Road and Old Brompton Road for access to the many shops, restaurants, cafes and supermarkets. Transport links can be found from the Fulham Road or Earls Court Station for quick access to the District and Piccadilly lines. There is also easy access to the A4/M4 towards Heathrow and the West.

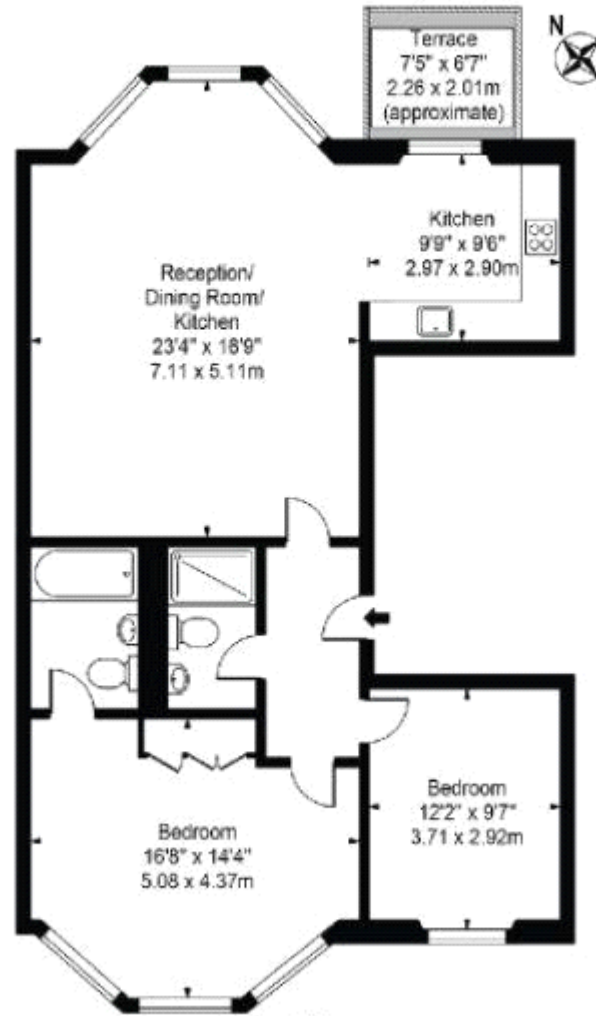
## Tenure

Share of Freehold



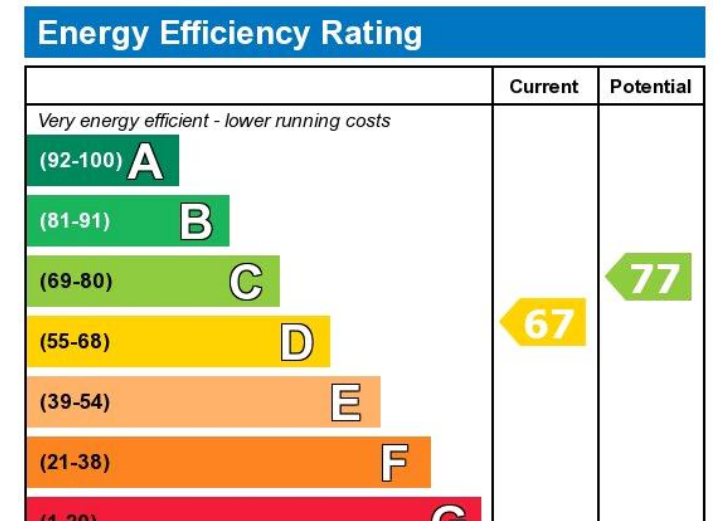
# Redcliffe Gardens

Approx. Gross Internal Area 943 Sq Ft - 87.61 Sq M



First Floor

For Illustration Purposes Only - Not To Scale



Viewing by appointment only  
 Milton Stone - Head Office  
 53 Abingdon Road, London W8 6AN  
 Tel: 0207 938 2311 Email: info@miltonstone.com Website: www.miltonstone.com

