



MILTON  
STONE

# Marloes Road, W8

1 bedroom apartment for sale

£850,000 Share of Freehold

## Description

A bright, well-proportioned and beautifully presented one bedroom apartment on the second floor of this Victorian building moments from the restaurants and shops of Stratford Village. This spacious apartment (621 sq ft) has high ceilings and plenty of storage and could be moved into with little further expense. The extensive shops, restaurants and transportation links of Kensington High Street and Earls Court Road are very close by.

## Tenure

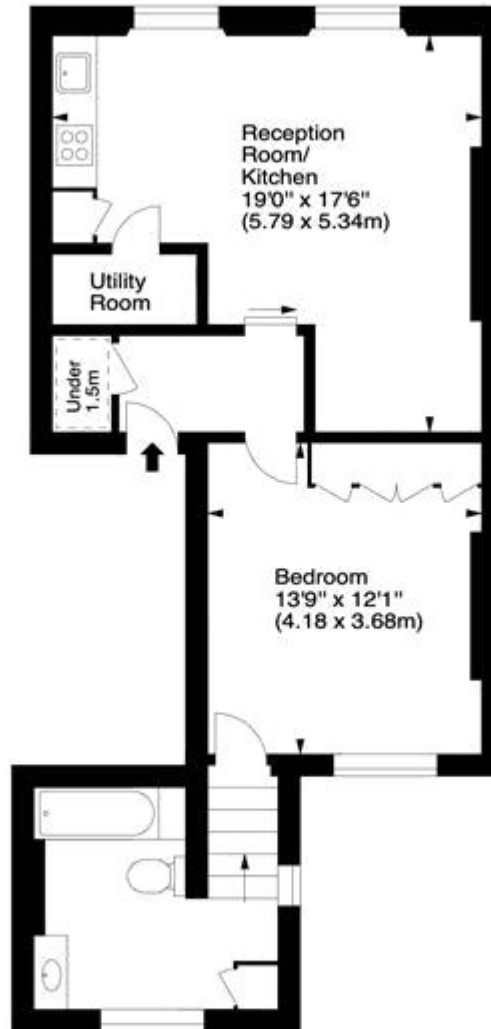
Share of Freehold (995 years)



# Marloes Road, W8



Approx. Gross Internal Area  
621 Sq Ft - 57.69 Sq M



Second Floor

For illustration purposes only. Not to scale.  
All measurements are taken and shown at floor level.  
www.r3photography.co.uk © Photography / Floor Plans / Lease Plans / EPCs







Energy Efficiency Rating		
	Current	Potential
Very energy efficient - lower running costs		
(92-100) <b>A</b>		
(81-91) <b>B</b>		<b>84</b>
(69-80) <b>C</b>		
(55-68) <b>D</b>		
(39-54) <b>E</b>	<b>53</b>	
(21-38) <b>F</b>		
(1-20) <b>G</b>		

Viewing by appointment only  
 Milton Stone - Head Office  
 53 Abingdon Road, London W8 6AN  
 Tel: 0207 938 2311 Email: [info@miltonstone.com](mailto:info@miltonstone.com) Website: [www.miltonstone.com](http://www.miltonstone.com)