



# St. Stephens Mansions, W2

£1,199,000 Share of Freehold

2 bedroom apartment for sale

## Description

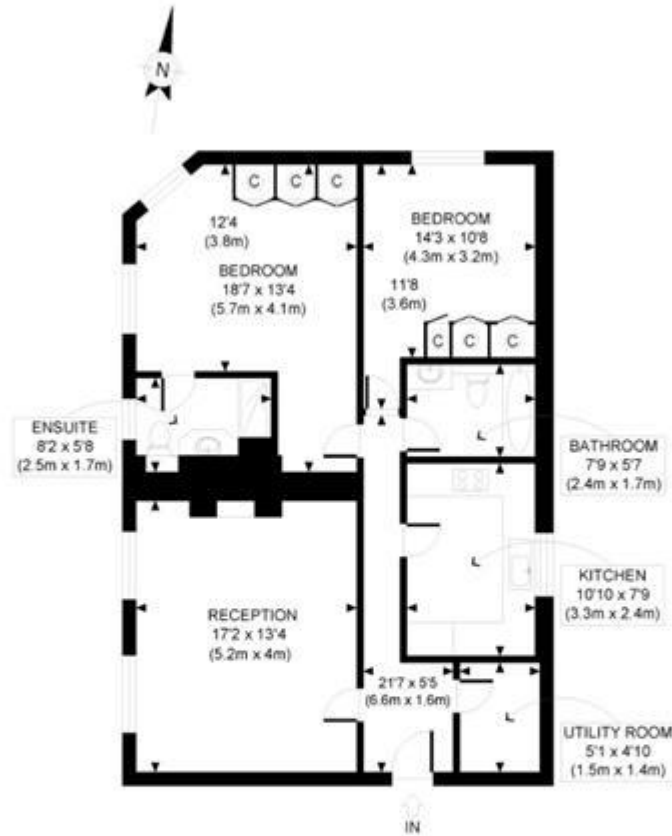
A bright, spacious and well-proportioned 2 double bedroom apartment in this highly desirable and quiet location off Westbourne Grove.

Service Charges approximately £2,440.00 per annum.

## Tenure

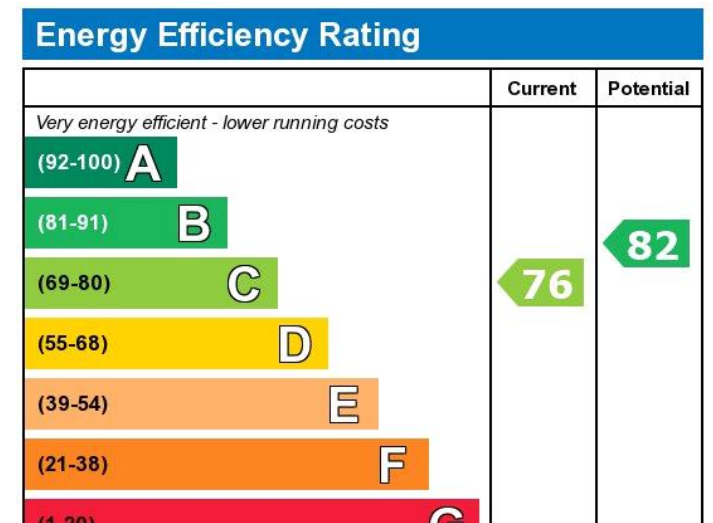
Share of Freehold (999 years)





SECOND FLOOR  
GROSS INTERNAL  
FLOOR AREA 891 SQ FT

APPROX. GROSS INTERNAL FLOOR AREA 891 SQ FT / 83 SQM



Viewing by appointment only  
 Milton Stone - Head Office  
 53 Abingdon Road, London W8 6AN  
 Tel: 0207 938 2311 Email: [info@miltonstone.com](mailto:info@miltonstone.com) Website: [www.miltonstone.com](http://www.miltonstone.com)

