



MILTON  
STONE



# Cornwall Gardens, SW7

£525,000 Share of Freehold

Studio for sale

## Description

A bright and spacious studio apartment with its own street entrance in a beautiful grand stucco fronted period building in this sought-after garden square. Cornwall Gardens is a short walk from Hyde Park and moments from the extensive shops and restaurants of South Kensington, and from Gloucester Road tube station.

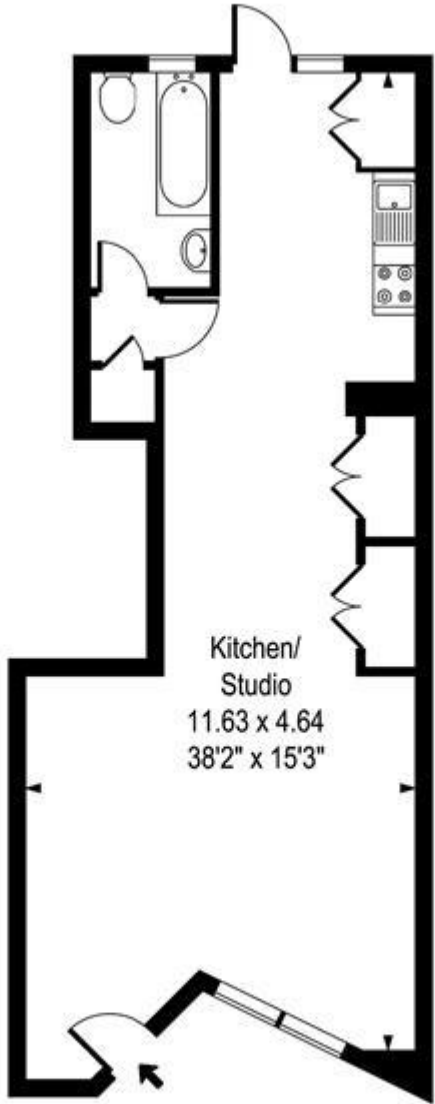
Tenure: Share of Freehold

## Tenure

Share of Freehold



Cornwall Gardens SW7



Lower Ground Floor

Approx Gross Internal Area 482 Sq Ft - 44.74 Sq M

Whilst every attempt has been made to ensure the accuracy of the floor plan contained here, measurements of the doors, windows, rooms and any other items are approximate and no responsibility is taken for any error, omission, or mis-statement. This plan is for illustrative purposes only and should be used as such by any prospective purchaser. The services, systems and appliances shown have not been tested and no guarantee as to their operability or efficiency can be given.



Energy Efficiency Rating		Environmental Impact (CO <sub>2</sub> ) Rating	
Very energy efficient - lower running costs	Current	Potential	Very environmentally friendly - lower CO <sub>2</sub> emissions
(92-100) <b>A</b>			(92-100) <b>A</b>
(81-91) <b>B</b>			(81-91) <b>B</b>
(69-80) <b>C</b>			(69-80) <b>C</b>
(55-68) <b>D</b>			(55-68) <b>D</b>
(39-54) <b>E</b>			(39-54) <b>E</b>
(21-38) <b>F</b>			(21-38) <b>F</b>
(1-20) <b>G</b>			(1-20) <b>G</b>
Not energy efficient - higher running costs			Not environmentally friendly - higher CO <sub>2</sub> emissions
<b>England &amp; Wales</b> EU Directive 2002/91/EC			<b>England &amp; Wales</b> EU Directive 2002/91/EC
		73	74
		78	81

The energy efficiency rating is a measure of the overall efficiency of a home. The higher the rating the more energy efficient the home is and the lower the fuel bills will be.

The environmental impact rating is a measure of a home's impact on the environment in terms of carbon dioxide (CO<sub>2</sub>).

Viewing by appointment only  
Milton Stone - Head Office  
53 Abingdon Road, London W8 6AN  
Tel: 0207 938 2311 Email: info@miltonstone.com Website: www.miltonstone.com

