



MILTON
STONE

Joubert Mansions, SW3

£695,000 Share of Freehold

1 bedroom apartment for sale

Description

A unique Artist Studio situated to the rear of this popular Period Mansion Building just off The Kings Road and within walking distance of Chelsea Green.

The property is accessed through the main entrance of the building, semi-detached and overlooking neighbouring gardens.

The Artist Studio has a ceiling height of approximately 5m affording very good natural light with the bedroom still commanding a ceiling height of approximately 3m. There are no neighbours above this property, so making for an ideal space for an artist or musician, as extremely quiet.

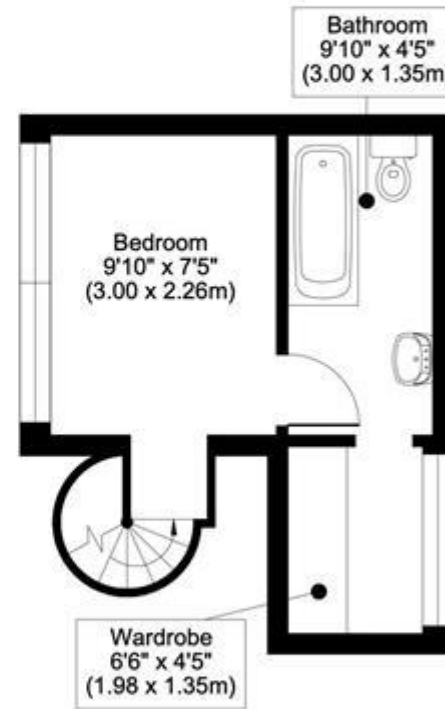
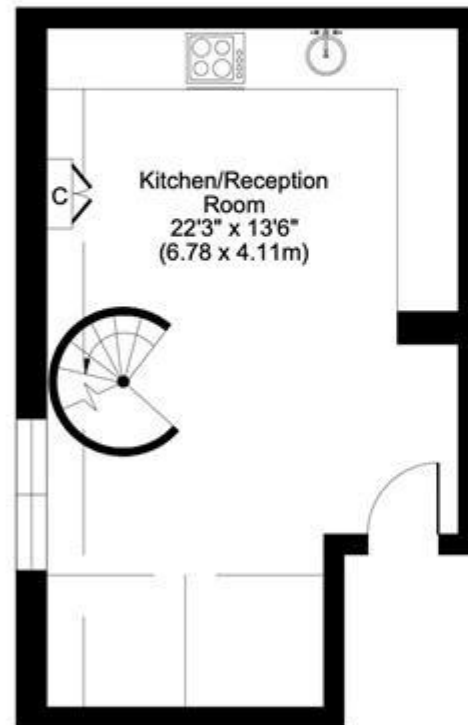
- *Artists Studio with built in sofa area and storage below
- *Kitchen/Dining room
- *Double bedroom
- *En-Suite Bathroom with shower over
- *Walk-in Wardrobe
- *Communal Heating and Hot Water
- *Share of Freehold

The service charge is £3788 per annum.

Tenure

Share of Freehold (960 years)







Energy Efficiency Rating		
	Current	Potential
Very energy efficient - lower running costs		
(92-100) A		
(81-91) B		
(69-80) C		
(55-68) D	55	58
(39-54) E		
(21-38) F		
(1-20) G		

Viewing by appointment only
 Milton Stone - Head Office
 53 Abingdon Road, London W8 6AN
 Tel: 0207 938 2311 Email: info@miltonstone.com Website: www.miltonstone.com