



MILTON  
STONE

# Colville Terrace, W11

2 bedroom apartment for sale

£995,000 Share of Freehold

## Description

A spacious, bright and well-proportioned first floor two bedroom apartment in this sought after location in the heart of Notting Hill. Situated in an end of terrace period building, this apartment has high ceilings, floor to ceiling windows in the reception room and a balcony. Colville Terrace is close to the extensive shops and restaurants of Portobello Road and Ledbury Road.

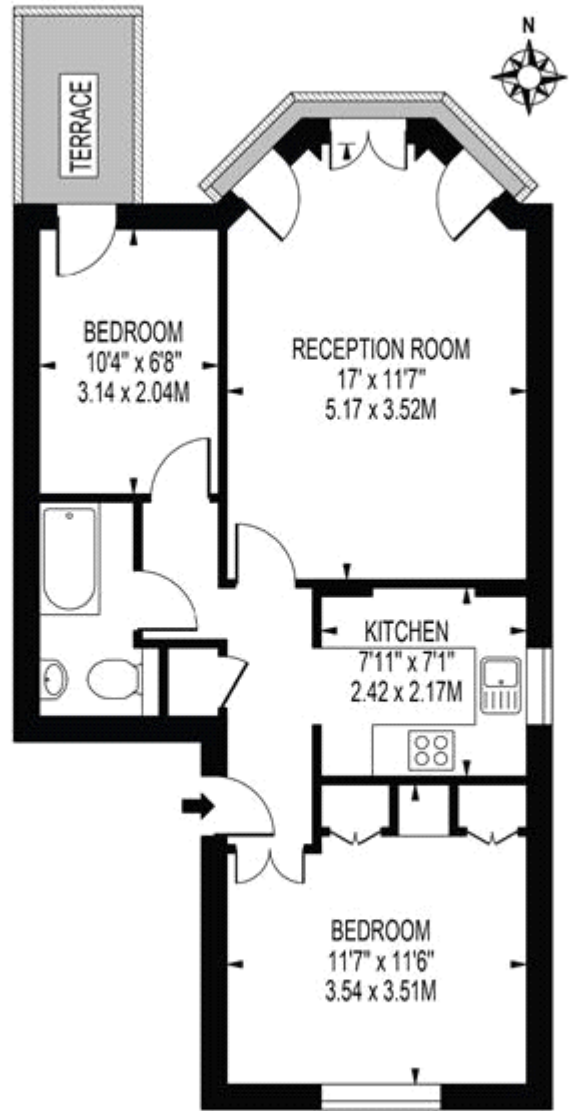
## Tenure

Share of Freehold



# COLVILLE TERRACE

APPROXIMATE GROSS INTERNAL FLOOR AREA: 536 SQ FT - 49.84 SQ M



FIRST FLOOR

FOR ILLUSTRATION PURPOSES ONLY

THIS FLOOR PLAN SHOULD BE USED AS A GENERAL OUTLINE FOR GUIDANCE ONLY AND DOES NOT CONSTITUTE IN WHOLE OR IN PART AN OFFER OR CONTRACT. ANY INTENDING PURCHASER OR LESSEE SHOULD SATISFY THEMSELVES BY INSPECTION, SEARCHES, ENQUIRES AND FULL SURVEY AS TO THE CORRECTNESS OF EACH STATEMENT. ANY AREAS, MEASUREMENTS OR DISTANCES QUOTED ARE APPROXIMATE AND SHOULD NOT BE USED TO VALUE A PROPERTY OR BE THE BASIS OF ANY SALE OR LET.



Energy Efficiency Rating			Environmental Impact (CO <sub>2</sub> ) Rating		
	Current	Potential		Current	Potential
Very energy efficient - lower running costs			Very environmentally friendly - lower CO <sub>2</sub> emissions		
(92-100) <b>A</b>			(92-100) <b>A</b>		
(81-91) <b>B</b>			(81-91) <b>B</b>		<b>84</b>
(69-80) <b>C</b>			(69-80) <b>C</b>		
(55-68) <b>D</b>			(55-68) <b>D</b>		<b>67</b>
(39-54) <b>E</b>			(39-54) <b>E</b>		
(21-38) <b>F</b>			(21-38) <b>F</b>		
(1-20) <b>G</b>			(1-20) <b>G</b>		
Not energy efficient - higher running costs			Not environmentally friendly - higher CO <sub>2</sub> emissions		
<b>England &amp; Wales</b>	EU Directive 2002/91/EC		<b>England &amp; Wales</b>	EU Directive 2002/91/EC	
The energy efficiency rating is a measure of the overall efficiency of a home. The higher the rating the more energy efficient the home is and the lower the fuel bills will be.			The environmental impact rating is a measure of a home's impact on the environment in terms of carbon dioxide (CO <sub>2</sub> ).		

Viewing by appointment only  
 Milton Stone - Head Office  
 53 Abingdon Road, London W8 6AN  
 Tel: 0207 938 2311 Email: info@miltonstone.com Website: www.miltonstone.com

