



MILTON  
STONE

# Chelsea Cloisters, SW3

£350,000 Leasehold

Studio for sale

## Description

A bright studio apartment with a balcony and wood floors on the fourth floor of this well maintained building on Sloane Avenue with a 24 hour porter. Sloane Avenue is moments from the restaurants and shops of Kings Road and Walton Street. South Kensington and Sloane Square tube stations are a short walk away.

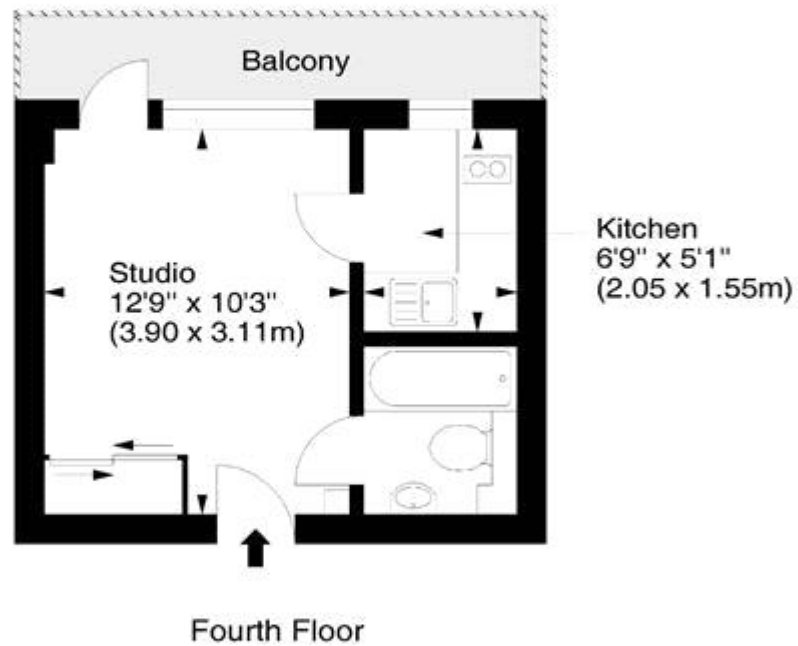
## Tenure

Leasehold (90 years)



## Sloane Avenue, SW3

Approx. Gross Internal Area  
202 Sq Ft - 18.77 Sq M





Energy Efficiency Rating		Environmental Impact (CO <sub>2</sub> ) Rating	
	Current	Potential	
Very energy efficient - lower running costs			Very environmentally friendly - lower CO <sub>2</sub> emissions
(92-100) <b>A</b>			(92-100) <b>A</b>
(81-91) <b>B</b>			(81-91) <b>B</b>
(69-80) <b>C</b>			(69-80) <b>C</b>
(55-68) <b>D</b>			(55-68) <b>D</b>
(39-54) <b>E</b>			(39-54) <b>E</b>
(21-38) <b>F</b>			(21-38) <b>F</b>
(1-20) <b>G</b>			(1-20) <b>G</b>
Not energy efficient - higher running costs			Not environmentally friendly - higher CO <sub>2</sub> emissions
<b>England &amp; Wales</b>	EU Directive 2002/91/EC	<b>81</b>	<b>England &amp; Wales</b>
			EU Directive 2002/91/EC
		<b>67</b>	<b>71</b>
			<b>83</b>

The energy efficiency rating is a measure of the overall efficiency of a home. The higher the rating the more energy efficient the home is and the lower the fuel bills will be.

The environmental impact rating is a measure of a home's impact on the environment in terms of carbon dioxide (CO<sub>2</sub>)

Viewing by appointment only  
 Milton Stone - Head Office  
 53 Abingdon Road, London W8 6AN  
 Tel: 0207 938 2311 Email: [info@miltonstone.com](mailto:info@miltonstone.com) Website: [www.miltonstone.com](http://www.miltonstone.com)

