

Ripple Wall flexible

IS-9802

Basic basis module

Each module contains: 1 top beam,
1 bottom beam, 1 base post, 1 centre
post, 1 top post, 1 kicker and 1 hanger.

Item no. IS-9800

Ripple Flex-Link kit

Each kit contains: 1 kicker, 1 hanger
and 2 top, 2 centre and 2 bottom
magnetic joints

Item no. IS-9802



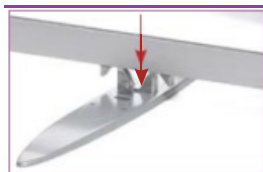
Accessories



D spotlights in bag
V / 18 W ind. transformer
m. IS-SL-LED



Media screen holder
VESA 75/100
Item. IS-9835



1 Start by clicking the bottom beam onto the foot.



2 Mount the base post onto the foot and lock it with the FASTclamp.



3 Mount the centre post onto the top of the base post.



4 Slide the top beam into the bottom of the top post and push it down into the beam



5 Mount the top post with the attached top beam onto the top of the centre post



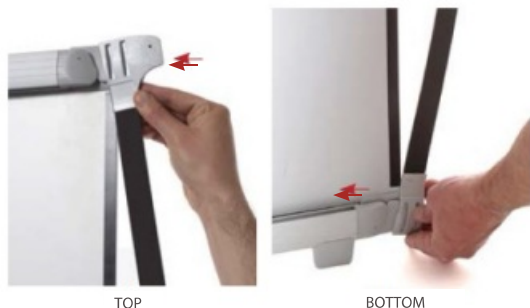
6 Mount the graphic panel, starting at the top left side and proceeding to the right side



7 At the bottom of the graphic panel and pull it down to push it onto the bottom beam at each side.



8 Build up the next stand, following points 1-7



TOP

BOTTOM

9 Slide in the top and bottom graphic joint from the side and mount the magnetic tape on the sides where you want to attach the Flex-Link graphic panel.



10 Attach the blind graphic panel between your two Ripple Stands



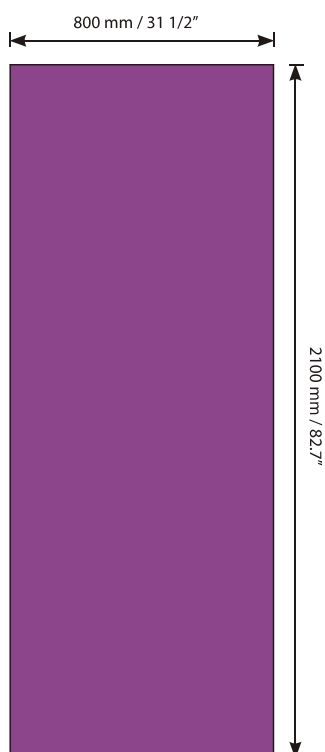
11 Now you can add more stands and blind panels.

Release the foot

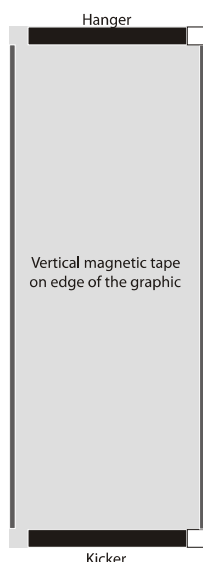


1 To release the foot from the bottom beam, press the two handles at the centre and lift up the foot.

Graphic measurement



Graphic panel attachments



Accessories

Kickers & Hangers
(incl. for the first set of panels)
800 mm / 31 1/2"
Magnetic tape (not incl.)
12 mm/0.5" A tape, 30 m / 98 ft.
Each panel needs: 4,5 m / 14.7 ft.

Item IS-9803

Item 82281

Printer material

We recommended the following material:

Poster paper : 180 gr / 0.4 lb.
The printed graphic panels must be laminated before use.
Front side: 125 microns (0,125 mm) / 0.005"
Reverse side: 250 microns (0,250 mm) / 0.010" stop light"

Polyester film : 330-370 microns (0,350 mm) / 0.013-0.015"
Top laminate: 125 microns (0,125 mm) / 0.005"



Kicker



Hanger

Mounting of Kickers and Hangers

Kickers and hangers to be fixed at the bottom and at the top of the graphic panels (reverse side).

IMPORTANT Carefully mount the Kickers & Hangers slightly inset from the edge of the graphic panel by approximately 0,5 mm / 0.020".

Mounting of Magnetic Tape

Magnetic tape to be fixed horizontally directly over/under kicker/hanger strip.
Magnetic tape to be fixed vertically along each side of the graphic panels.

IMPORTANT Carefully mount the magnetic tape slightly inset from the edge of the graphic panel by approximately 0,25 mm / 0.010". Once mounted, a very thin straight white line should show between the edge of the graphic and the outside edge of the magnetic tape. Do not exceed 0,5 mm / 0.020".

Application Techniques

To obtain optimum adhesion, the bonding surfaces must be well unified, clean and dry. Typical surface cleaning solvents are isopropyl alcohol/water mixture (rubbing alcohol) or heptane.

Note: Be sure to follow solvent manufacturer's precautions and directions for use when using solvents.



1 Remove the top post and replace it with the media screen holder without the black holder (see photo instruction A).

2 Build up the complete wall and attach the graphic panels.

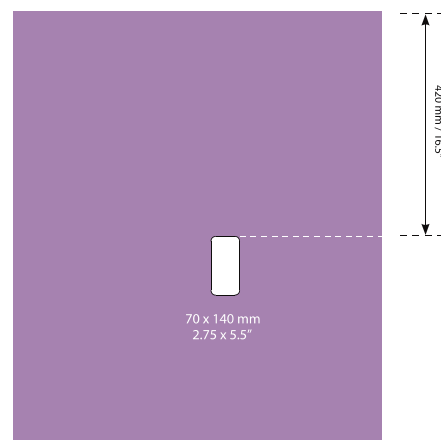
3 Mount the screen (see photo instruction B) and then push the screen holder into the post holder while at the same time pressing the two buttons on the post holder together.



Ripple skærm holder

For media screen with VESA 75/100 or our iPad holder (80029)
Item no. IS-9835

Please observe: We do not recommend using a media screen holder on a single free-standing banner stand section.



A Push the top and bottom knob into the center and remove the screen holder.

B Mount the screen holder at your screen or iPad holder.

Make a 70 x 140 mm / 2.75 x 5.5" hole in the center of and 420 mm / 16.6" from the top.