

# Maven digital repeater PS EMEA-APAC

## Tropo repeater for Critical Comms

Datasheet version 2.8

**Outstanding  
Performance**

**End to end  
Digital platform**

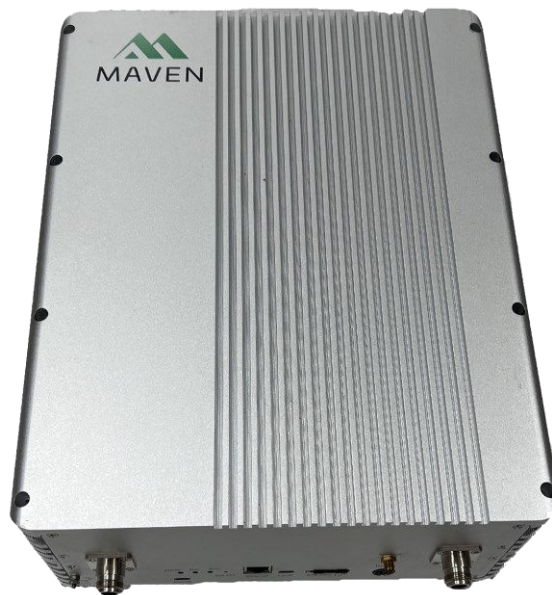
**Always  
Future-proof**

**Overall  
Cost efficiency**

**More  
Sustainable**

Maven Wireless offers new solutions for wireless coverage in all parts of the world. Our products are end to end digital and future-proof, comes with the best performance and cost efficiency you can find. We also have high marks on sustainability and a burning passion for making our customers and end-users life safer, better and easier by securing 100% wireless coverage.

**Tropo low power digital repeater for  
critical communications and public  
safety**



## Tropo off air repeater specification

### General

Mains power	100 - 240 VAC
Power consumption	50 W max fully loaded
Management	Ethernet
Remote Access	4G modem
Operating temperature	-25 to +55 °C
Ingress protection	IP40
Antenna port	N-type F
Automatic Gain Control	>51 dB
MGC (Step Attenuation)	1 dB pp
Gain flatness	< 3 dB at max gain
Gain UL/DL	max 67 dB
Group Delay	< 14,5 us
Noise Figure	5 dB
Number of digital filters	4 filters using 25kHz-250k filter bandwidths 2 filters using 200KHz-5MHz filter bandwidths
Filter Bandwidth	25 kHz to 6,5 MHz
VSWR	< 2

### RF Parameters

DL Output power	+20 dBm per band
UL Output power	+20 dBm per band

### Frequencies\*

Band	Uplink (MHz)	Downlink (MHz)	Operation bandwidth	Composite output power	Technologies
400	380-385	390-395	5 MHz	+ 20 dBm	TETRA TMO
400	380-386.5	390-396.5	5 MHz	+ 20 dBm	TETRA TMO
400	Other frequencies available on request		5 MHz	+20 dBm	TETRA TMO

### Mechanical

Dimensions (height, width, depth)	280 x 350 x 154 mm
Weight	max 15 kg (indoor)

## Standard & Approvals

---

EMC & safety

Low voltage directive 73/23/EEC

EMC directive 2004/108/EC

R&TTE directive 1999/5/EC

\*) Various frequency combinations in the same enclosure are available. Contact Maven Wireless for more information.  
Note: All parameters are subject to change.