

Maven digital DAS Americas

Nimbus quad band low power

Datasheet version 3.3

**Outstanding
Performance**

**End to end
Digital platform**

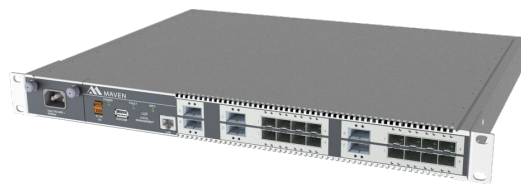
**Always
Future-proof**

**Overall
Cost efficiency**

**More
Sustainable**

Maven Wireless offers new solutions for wireless coverage in all parts of the world. Our products are end to end digital and future-proof, comes with the best performance and cost efficiency you can find. We also have high marks on sustainability and a burning passion for making our customers and end-users life safer, better and easier by securing 100% wireless coverage.

**Nimbus remote unit
Helix distribution unit
Nimbus power distribution unit**



Nimbus specification



General

Power supply options	48 VDC (AC local adaptor) or remotely powered (NPDU)
Power consumption	70 W fully loaded
Operating temperature	0 to +55 °C (32 to 131 °F)
Ingress protection	IP40
Antenna	4 Integrated antennas for MIMO and/or SISO
Digital Interface	SFP+, 2 x SFP28
Number of bands	up to 4 bands in one enclosure

RF parameters

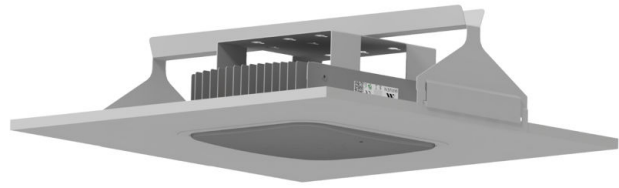
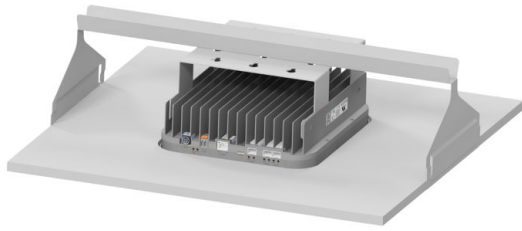
Output power	+23 dBm per band
Noise figure	6 dB typical at max gain
Return loss	> 14 dB
System impedance	50 Ω
Maximum input power	+17 dBm, non-destructive*

Band	Uplink	Downlink	Operation bandwidth	Composite output power	Technologies
25	1850 – 1915	1930 – 1995	65 MHz	+ 23 dBm	GSM, WCDMA, LTE, 5G NR
66	1710 – 1780	2110 – 2200	70 MHz	+ 23 dBm	WCDMA, LTE, 5G NR
30	2305 – 2315	2350 – 2360	10 MHz	+ 23 dBm	LTE, 5G NR
7	2500 – 2570	2620 – 2690	70 MHz	+ 23 dBm	LTE, 5G NR
41	2496 – 2690		194 MHz	+ 23 dBm	LTE, 5G NR
n48	3550 – 3700		150 MHz	+ 23 dBm	5G NR
n77	3700-3980		280 MHz	+ 23 dBm	5G NR
n78	3300 – 3800		400 MHz*	+23 dBm	5G NR

* Final allocation to be determined

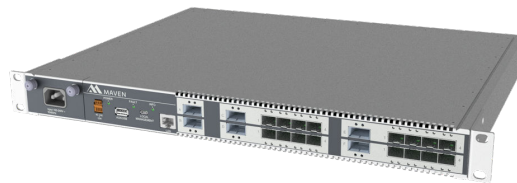
Mechanical

Dimensions (height, width, depth)	102 x 246 x 285 mm (4.0 x 9.7 x 11.2 inches)
Weight	max 5 kg (11 lbs)
Colour	RAL 9016 Matt



The nimbus can be either wall mounted, or ceiling mounted (above pictures). It can also be mounted above the ceiling tile.

Helix specification



General

Power supply options	85 – 264 VAC, redundant, Hot swappable optional -72 – -36 VDC, redundant, Hot swappable
Power consumption	180 W max fully loaded
Management	Ethernet 10/100/1000 Micro USB Standard USB accessory connector Summary alarm output (NC/NO)
Operating temperature	+5 to +45 °C (+41 to 113 °F)
Digital input/output	2x QSFP+
Digital out to remotes	16 SFP+ or 8x SFP28

Mechanical

Dimensions (height, width, depth)	43 x 436 x 350 mm (1.7 x 17.2 x 13.8 inches) in standard 19" rack format
Weight	< 5 kg (11 lbs)

Nimbus Power Distribution Unit (NPDU)



General

Power supply options	85 – 264 VAC, redundant, Hot swappable optional -72 – -36 VDC
Power consumption	1500 W max fully loaded
Management	Ethernet 10/100/1000 Micro USB
Operating temperature	+5 to +45 °C (+41 to 113 °F)
DC Supply	16 ports DC IEEE 802.3bt type 4 class 8 standard over 2-wire (max 90 W)

Mechanical

Dimensions (height, width, depth)	43 x 436 x 350 mm (1.7 x 17.2 x 13.8 inches) in standard 19" rack format
Weight	< 5 kg (11 lbs)

Helix 16x SFP+



Helix 8x SFP28



Nimbus Power Distribution Unit

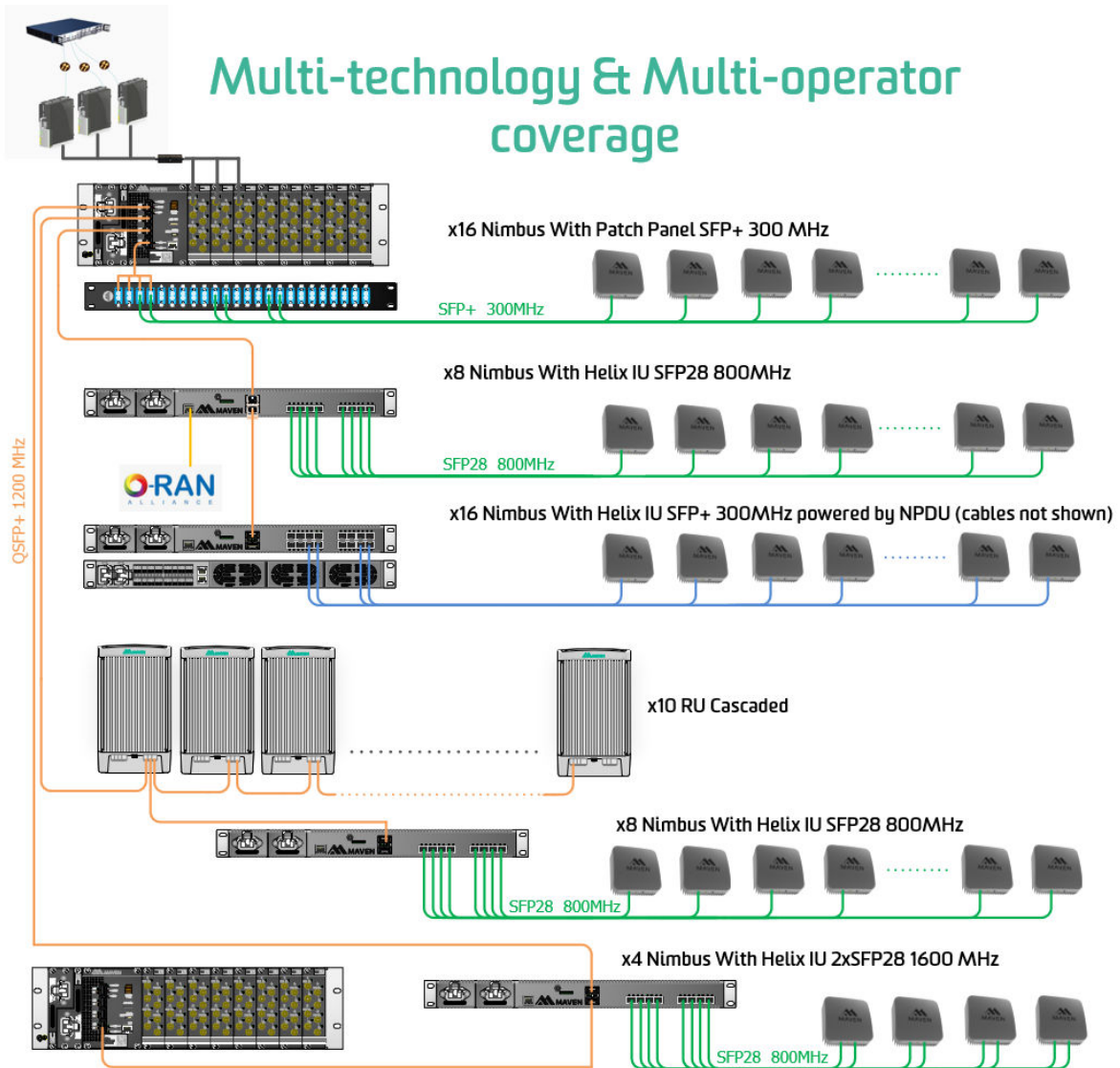


Only VAC models depicted above, VDC interfaces also available.

Standards & approvals

EMC & safety	Low voltage directive 73/23/EEC
EMC directive 2004/108/EC	RED directive 2014/53/EU

Multi-technology & Multi-operator coverage



Various frequency combinations in the same enclosure are available. Contact Maven Wireless for more information. All parameters are subject to change.