

# TYPE OGT10S2-REPLACEMENT

Centrifugal Grinder Pump, for replacement of E-One Grinder Pumps  
For automatic level control operation

## **Liqflow's Replacement Pumps**

The Heart in a Pressure Sewer System is the Grinder Pump. With Liqflow's OGT Replacement Pump it is now possible to Replace an E-One PC Grinder Pump with a centrifugal Grinder Pump. With a special developed mounting kit, it's now possible to mount our unique OGT Grinder Pumps, directly in a E-One Pumping Station.



## **Driving Innovation**

*The first and only residential pressure sewer pump with a 20 year life\* and zero scheduled maintenance.*

*At the forefront of advancing technologies, the OGT is purposebuilt for continual operation across coastal, urban and rural terrains, with the versatility to adapt to any pressure sewer network.*

## **Abrasion Resistant Impeller**

Proprietary Aerospace infusion coating technology; a stainless steel turbine impeller with multi vane design, steep curve and aerospace coating resists abrasion from sand, grit and hard particles to provide double the life of conventional Progressive Cavity pumps. This coating was used to protect the high speed turbine components in Blackhawk helicopters during the 'Desert Storm' conflict.

## **Abrasion Resistant Dual Channel Volute**

Has a propriety aerospace infusion coating engineered to resist abrasion for the whole of life. The Dual Channel Volute balances load on shaft which increases grinding ability.

## **Steep Pump Curve**

The steep pump curve enables smaller diameter pipework and greater control over system pressure, with capability up to 80 metres or the flexibility to set maximum limits at lower pressures providing full network control and protection.

## **Shorter Shaft**

A shorter shaft enables a closer tolerance on the cutter with tighter clearances, eliminating side-to-side deflection and jamming (as seen with progressive cavity pumps) while increasing the life of the mechanical seal.

## **Slicerator**

A smaller cutter and grinder radius with tighter clearances maximises cutting force for grinding fibrous materials and all modern textiles to eliminate jamming.

## **Silicon Carbide Seal**

A Silicon Carbide Mechanical Seal with vented case reduces working pressure to increase seal life. Hydraulic passages and pump-out vanes protect from stringy debris and abrasive media for longer life.



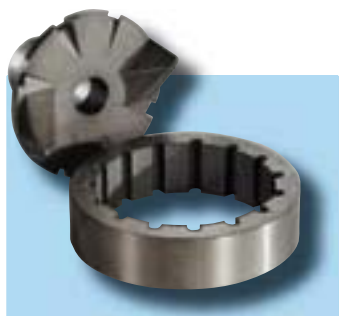
# TYPE OGT10S2-REPLACEMENT

Centrifugal Grinder Pump, for replacement of E-One Grinder Pumps

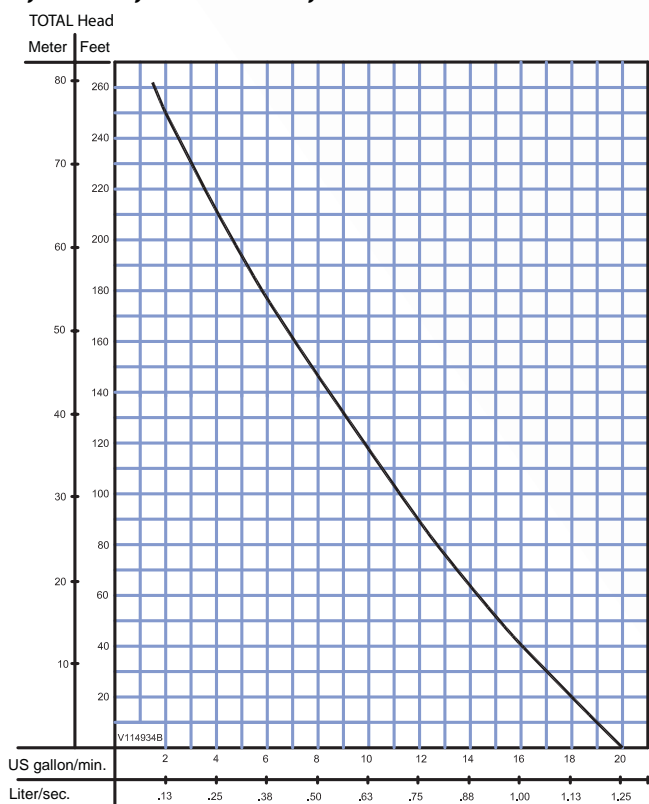
For automatic level control operation

## Exclusive Slicerator

A smaller cutter and grinder radius with tighter clearances maximises cutting force for grinding fibrous materials and all modern textiles to eliminate jamming. The staggered slicing action of the grinder radial cutter dramatically reduces the torque requirement of the motor, cuts with less horsepower, and increases the unit's efficiency. Eliminates clogging with particularly troublesome objects such as plastic, rubber, sanitary napkins, disposable diapers and cloth items.



## OGT Performance curve 0,75 kW, 2850RPM, 50 Hz



## OGT Grinder pumpe Features

1. Quick disconnect cord
2. DN40 discharge flange
3. Exclusive Slicerator
4. Integral capacitors for start and run
5. Angular contact bearings 100,000 hour L-10 rating
6. Oil filled motor with overload protection
7. Silicon carbide mechanical seal for long life
8. Proprietary Aerospace infusion coating technology; a stainless steel turbine impeller with multi vane design



Testing is performed with water, specific gravity 1.0 @ 20°C, other fluids may vary performance.