

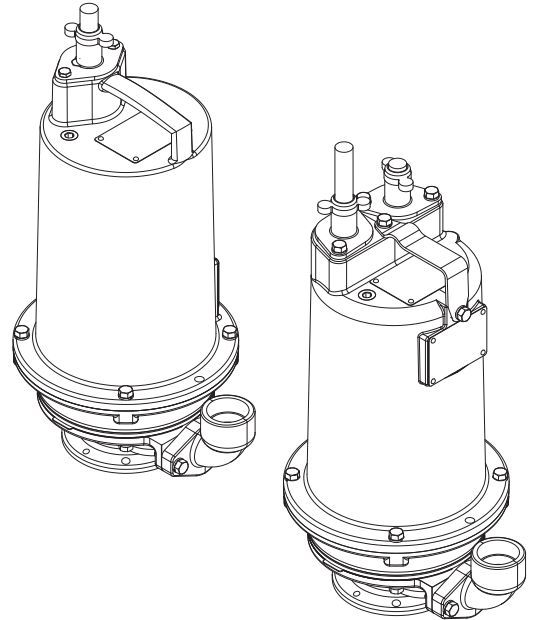
Model OGT10S2

Centrifugal grinder pump, 50 Hz
For automatic level control/manual operation

Submersible Grinder Pumps

Specifications:

DISCHARGE	1 1/4" NPT Flanged, Vertical
LIQUID TEMPERATURE	104°F (40°C) Continuous
MOTOR HOUSING	Cast Iron ASTM A-48, Class 30.
SEAL PLATE	Cast Iron ASTM A-48, Class 30.
SUCTION CASING	Cast Iron ASTM A-48, Class 30.
IMPELLER	Stainless Steel
SHREDDING RING	Hardened 440C Stainless Steel Rockwell® C-55.
CUTTER	Hardened 440C Stainless Steel, Rockwell® C-55.
SHAFT	416 Stainless Steel
SQUARE RINGS	Buna-N
O-RINGS	Buna-N
HARDWARE	316 Series Stainless Steel
PAINT	Epoxy Dupont Corlar® Amine Epoxy
SEAL:	
Design	Single Mechanical
Material	Rotating Faces - Silicon Carbide Stationary Faces - Silicon Carbide Elastomer - Buna-N Hardware - 300 Series Stainless
CORD ENTRY	15 ft. (4.6m) Std. Cord. Custom Molded Quick Connect, for Sealing and Strain Relief. Rated IP68.
CORD: Type	CSA/UL Approved SOW
UPPER BEARING:	
Design	Single Row, Ball, Oil Lubricated
Load	Radial
LOWER BEARING:	
Design	Single Row, Ball, Oil Lubrication
Load	Radial & Thrust
MOTOR:	
Design	Oil-Filled, Squirrel Cage Induction
Insulation	Class F
Type	Capacitor Start/Capacitor Run
LEVEL CONTROL:	SOLD SEPARATELY Model ESPS-100, ESPS-150, Environmentally sealed pressure switch with CPVC housing, Buna diaphragm, Custom molded quick connect for sealing and strain relief
OPTIONAL EQUIPMENT	Cord Length, Valves, Fittings, Lifting Chain, Pumpcontrols etc.



Series: OGT
0,75 kW, 2850RPM, 50Hz

**Compact Range, for automatic
level control/manual operation**



NSF/ANSI 46



DESCRIPTION:

Liqflow's Omni Grind Turbine pump combines high head capabilities with low amp technology to offer a 20 year expected pump life.

The Grinder Pump is designed to reduce domestic sewage to a finely ground slurry. With an International Protection Rating of IP68, Liqflows's pumps hold the highest levels of protection on the market today.

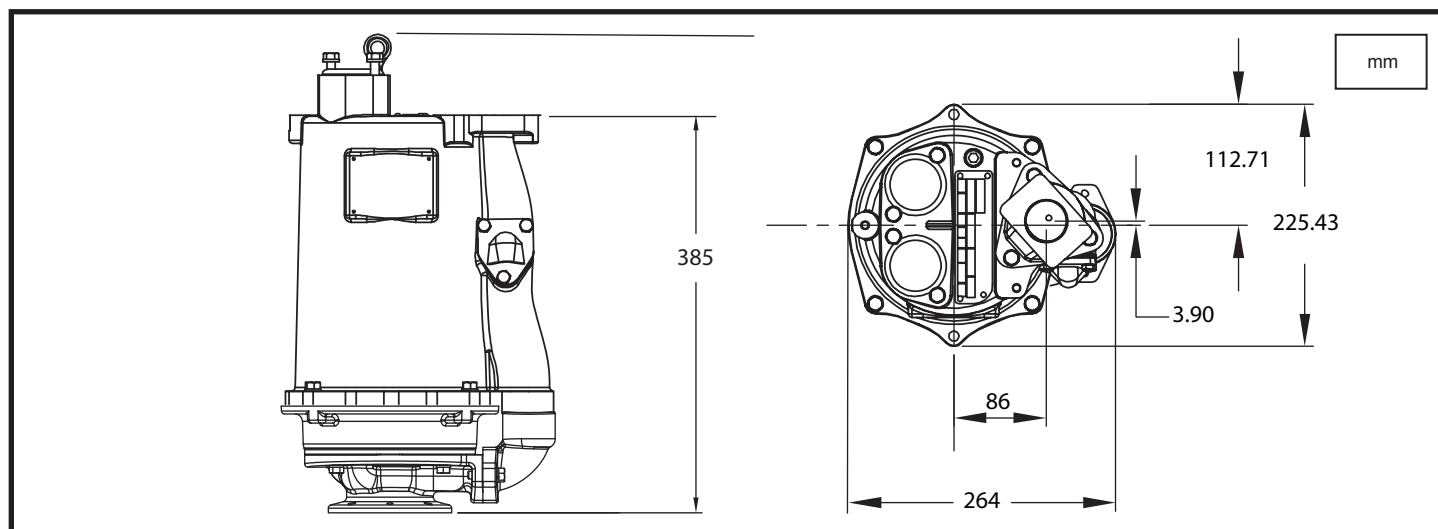
* Tested for the equivalent of 20 years
useage for domestic sewer applications.

Model OGT10S2

Centrifugal grinder pump, 50 Hz

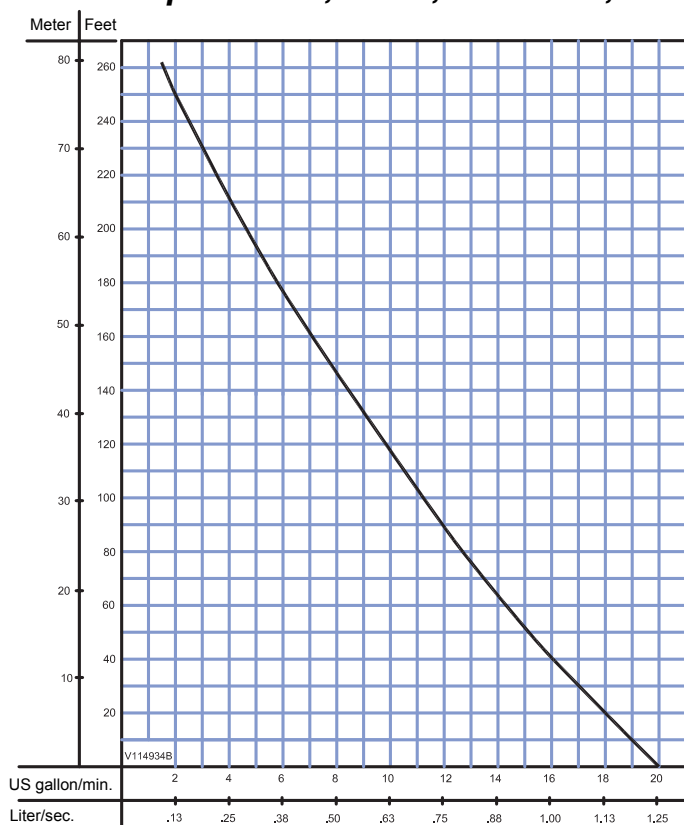
For automatic level control/manual operation

Submersible Grinder Pumps



PUMP TYPE PUMPCURVE	PRODUCT NUMBER	P2 [kW]	VOLT [V]	PH/Hz Hz	RPM (Nom)	START METHOD	I nom. [A]	I start [A]	CABLE SIZE	CABLE TYPE	CABLE O.D. ± 0.5 mm
OGT10S2	20300020	0,75	240	1 / 50	2850	DOL	13.1	25.9	12/5	SOW	18.0

OGT Pump Curve 0,75 kW, 2850RPM, 50 Hz



Testing is performed with water, specific gravity 1.0 @ 20°C,
other fluids may vary performance.

IMPORTANT !

- 1.) PUMP MAY BE OPERATED "DRY" FOR EXTENDED PERIODS WITHOUT DAMAGE TO MOTOR AND/OR SEALS.
- 2.) THIS PUMP IS APPROPRIATE FOR THOSE APPLICATIONS SPECIFIED AS CLASS I DIVISION II HAZARDOUS LOCATIONS.
- 3.) THIS PUMP IS NOT APPROPRIATE FOR THOSE APPLICATIONS SPECIFIED AS CLASS I DIVISION I HAZARDOUS LOCATIONS.
- 4.) INSTALLATIONS SUCH AS DECORATIVE FOUNTAINS OR WATER FEATURES PROVIDED FOR VISUAL ENJOYMENT MUST BE INSTALLED IN ACCORDANCE WITH THE NATIONAL ELECTRIC CODE ANSI/NFPA 70 AND/OR THE AUTHORITY HAVING JURISDICTION. THIS PUMP IS NOT INTENDED FOR USE IN SWIMMING POOLS, RECREATIONAL WATER PARKS, OR INSTALLATIONS IN WHICH HUMAN CONTACT WITH PUMPED MEDIA IS A COMMON OCCURRENCE.