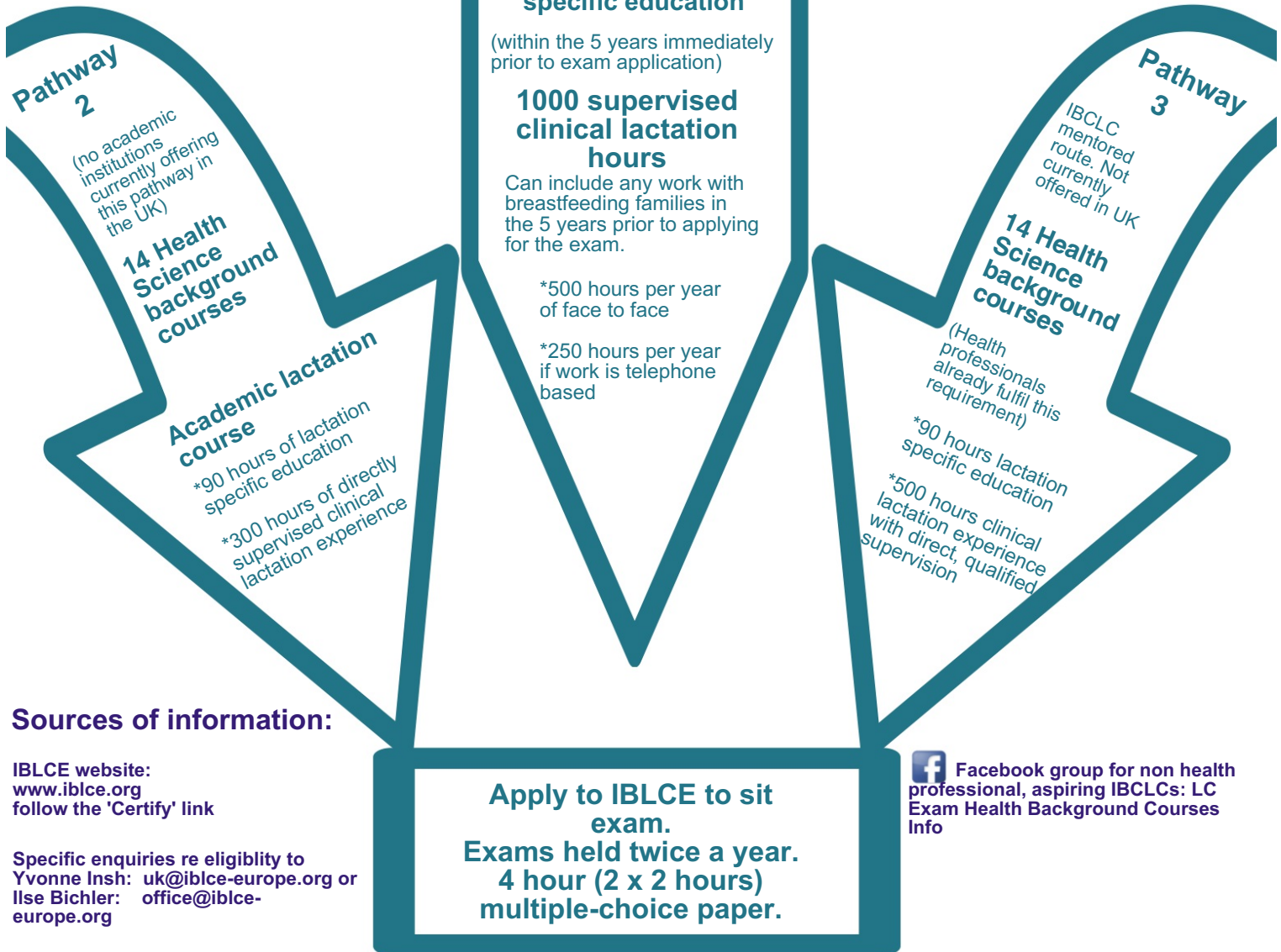


Planning your route to the International Board of Lactation Consultant Examiners (IBLCE) Exam Eligibility in the UK



The professional voice of breastfeeding since 1994

LCGB website: www.lcgb.org



Lactation Consultants of Great Britain (LCGB) has an equality and diversity team and is committed to working towards ensuring there is equitable access to the International Board Certified Lactation Consultant (IBCLC) profession in the UK.

LCGB wishes to support aspiring IBCLCs. Do let us know when you have passed the exam so that you can upgrade from Associate to Full membership.

Sources of information:

IBLCE website:
www.iblce.org
follow the 'Certify' link

Specific enquiries re eligibility to
Yvonne Insh: uk@iblce-europe.org or
Ilse Bichler: office@iblce-europe.org

Facebook group for non health professional, aspiring IBCLCs: LC Exam Health Background Courses Info

To check eligibility of health science courses see;
www.iblce.org/wp-content/uploads/2013/08/HealthSciencesEducationGuide2015.pdf

LCGB is keen to encourage aspiring IBCLCs and develop the profile of the profession in the UK, and therefore we wish to provide support for you, so do join us as an Associate Member and enjoy the benefits and educational opportunities on offer, including reduced rates for our annual conference and other study days.

Do you want to be an IBCLC? Where are you starting from?

Non Health Professional

Registered Health Professional

14 Health Science background courses

- Biology
- Human anatomy
- Human physiology
- Infant & child growth and development
- Introduction to clinical research
- Nutrition
- Psychology/counselling skills/communication
- Sociology/cultural sensitivity/cultural anthropology
- Basic Life Support
- Medical Documentation
- Medical Terminology
- Occupational Safety and Security for HPs
- Professional Ethics for HPs
- Universal Safety Precautions and Infection Control

90 hours breastfeeding specific education

(to be completed within 5 years prior to applying for exam)

1000 supervised clinical lactation hours

(to be completed within 5 years prior to applying for exam)

Full membership of LCGB is open to qualified International Board Certified Lactation Consultants. Associate membership is open to any others (including IBCLC candidates) interested in the care of the breastfeeding mother and her baby.

Important!

IBLCE (International Board of Lactation Consultant Examiners) is the examining and accrediting body.

This is who you need to apply to to sit the exam.

www.iblce.org



Did you know?

All LCGB members (Full and Associate) benefit from:

- * LCGB conference & study days at discounted rates
- * An opportunity to gain CERPs or education hours
- * Opportunities to apply for bursaries to attend the LCGB conference and sponsored study day places

Join us at: www.lcgb.org



LactationConsultantsGreatBritain



@LCGB1994