



Kindness • Perseverance • Success



# Welcome to Kingsway Primary School

# Aim of our presentation

- Share what your child's educational experience will look like if they come to Kingsway
- Talk about what the school offers within and beyond the curriculum.
- Talk through practicalities of applying to school.
- Answer any questions that you may have.



# Our Vision

**Academic**

**Pastoral**

**Behavioural**

**Social**

**Our vision is that Kingsway Primary School will provide an exceptional educational experience for every child.**





# Our Vision



**Playtime**

**Music**

**Arts, drama**

**Sports**

**Visits and trips**

**Drivers:**  
**Love of Language**  
**Deep Knowledge and**  
**Understanding of the World**  
**Opportunities to Experience**

# The Ofsted Report – Feb 2022



*The core values of Kindness, Perseverance and Success permeate the school like a stick of rock.*

*Pupils benefit from an ambitious curriculum.*

*Children enjoy being here; they take pride in their work.*

*Staff are dedicated and want the best for pupils.*

*Vulnerable pupils are given a strong start right from the beginning of nursery and this carries on through to Year 6.*

*The curriculum reflects the school's needs; knowledge is secured well; drivers are integral to curriculum design*

## Parent Quotes:

“My daughter was very nervous on starting but with staff and teacher interaction and a daily greeting her confidence has grown so much; my other two daughters are doing great can honestly say this school is so friendly and supportive wouldn't want my kids to go anywhere else.”

“I am very happy my son got into Kingsway Primary School, he has settled so well into reception, coming home happy every day. I am amazed at how much he has learnt during his first term.”

## Parent Survey October 2023:

- 100% of parents surveyed would recommend the school
- My child is happy: 4.71 / 5
- 59 responses so far...

30. I would recommend this school to another parent?





# Our ethos for reception

Working with parents



Strong relationships –  
happy, settled children.



Developing all areas of  
learning.



Love of learning



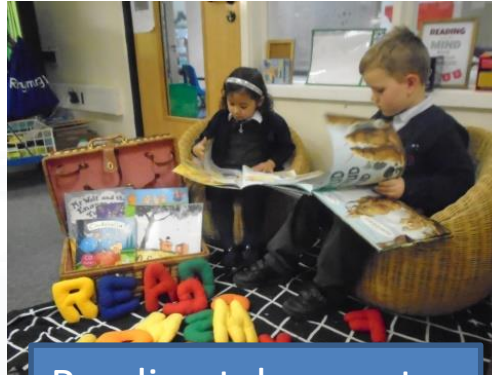
High ambition for all our pupils



# A typical day in reception...



Balance of adult-led and play-based learning.



Reading takes centre stage.



Up-to-date practice in maths and English

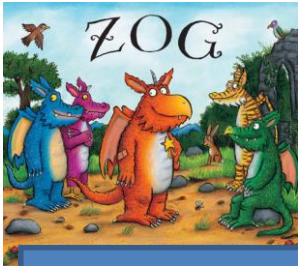


Exciting outdoor provision

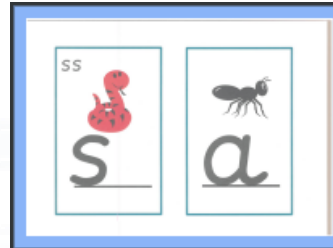


Challenging indoor play-based learning

# Reception curriculum



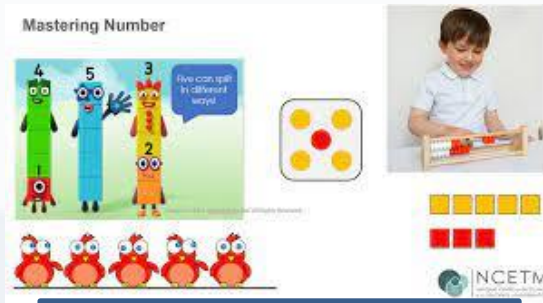
Based around key texts



Systematic approach to phonics



Strong focus on speaking and listening



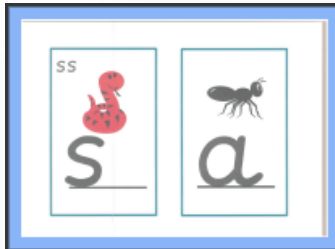
Maths approach based on latest research



Range learning experiences inside and out

# Curriculum – in reception and beyond....

Rigorous, systematic approach to phonics sits alongside a balanced approach to reading.

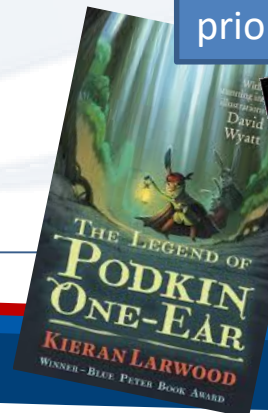


High standards in writing – 24% met the higher standard in 2023

Mastery Maths



High Quality texts used across the school



Personal development and well-being high priority.



# A start to a fantastic journey



Deep Knowledge and  
Understanding of the world.



Love of  
Language



Opportunities to Experience





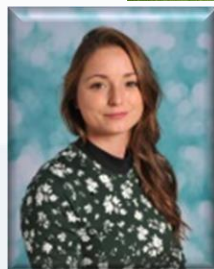
# Personal and Social Development



Vast outdoor spaces for playtimes and PE



Personal development and well-being prominent in our curriculum.



Pastoral support team working with children and their families.



Residential trips



# Behaviour

A safe community

Strong relationships

A continued learning journey

Strong, consistent structures and routines



Role-Modelling

Continued Professional Development

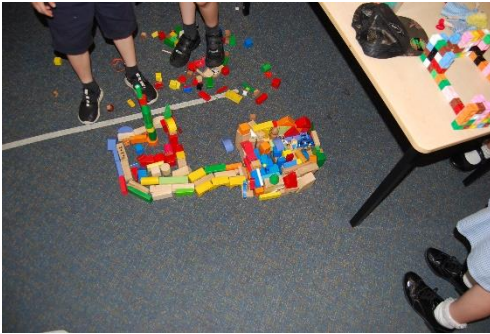
Team work

Taking responsibility

Consistency

Support and Intervention

# Extra-curricular activities



Library and reading

Gymnastics

Singing



Art clubs

Football

Netball



Singing



A commitment to every child  
representing the school in  
something before they leave.

Rugby

Multiskills

Forest Schools

Drama



# Other things you might need to know



School meals provided  
by Caterlink cooked on  
site.



School  
communications  
systems

Breakfast club starts at  
8:00 am



K Club  
After school club until  
5:30



School  
Uniform



# Applying to school – starting school

Forms received – apply through website

## When you receive their place:





Kindness • Perseverance • Success

# Thank you

# Questions