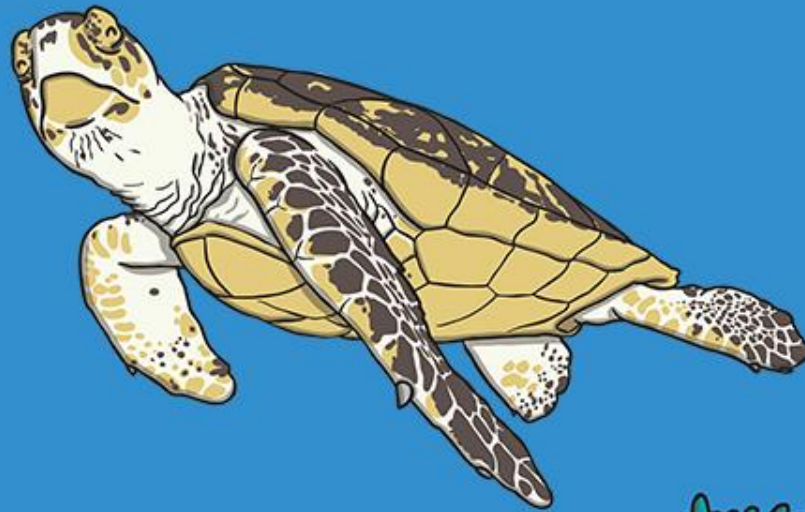


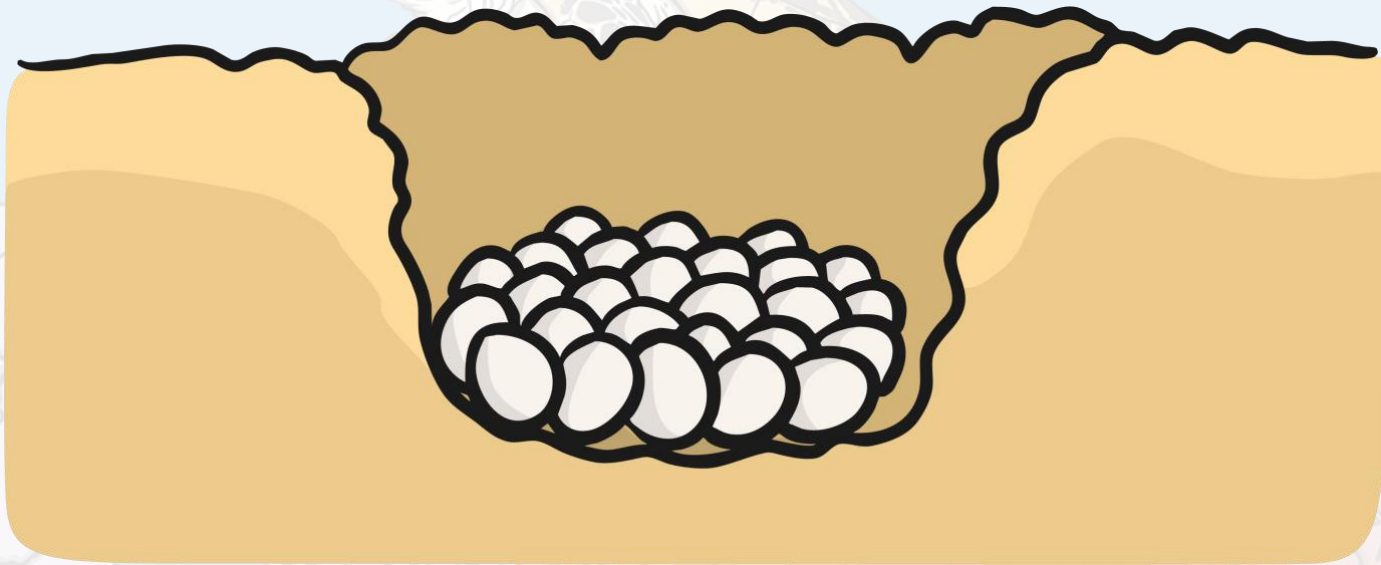
Sea Turtle Life Cycle



twinkl

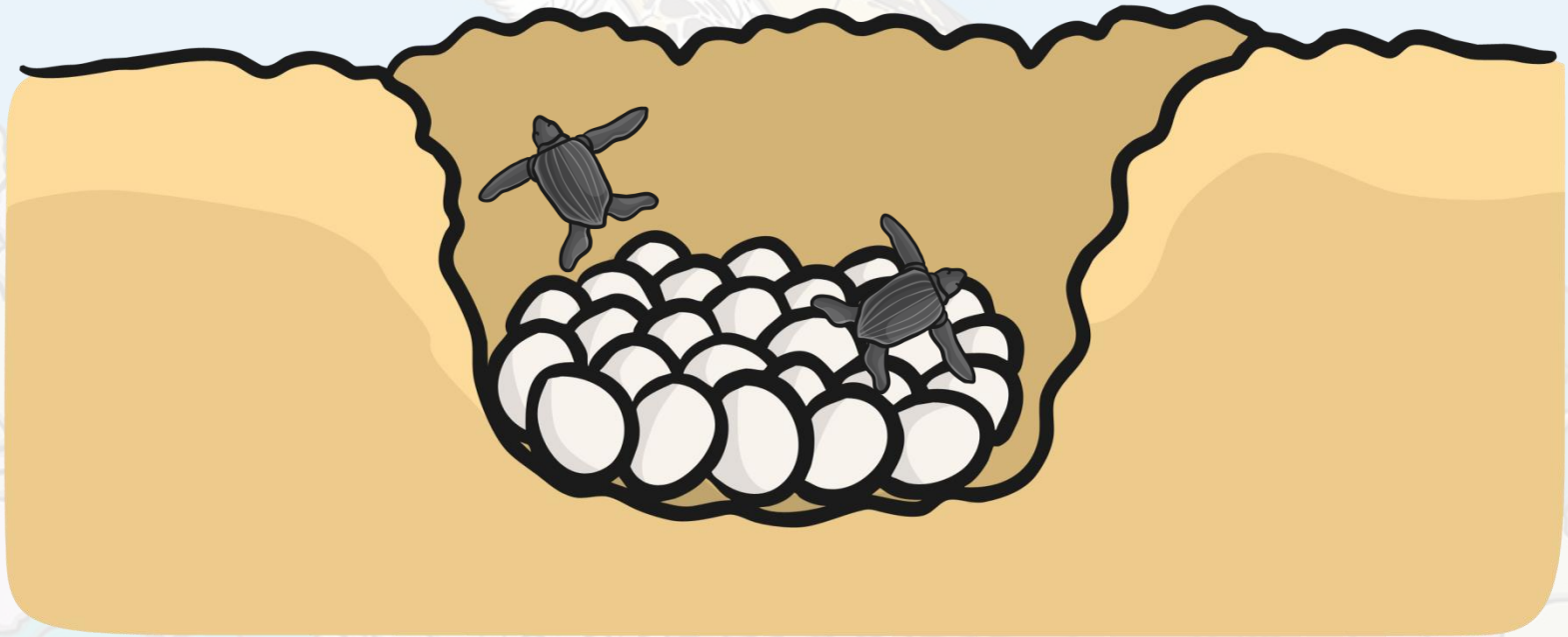
Turtles migrate to the same place where they were born to breed. They usually mate on beaches and dig shallow nests in to the sand.

The female lays 50-130 eggs and fertilises them with some stored sperm every 2 weeks.

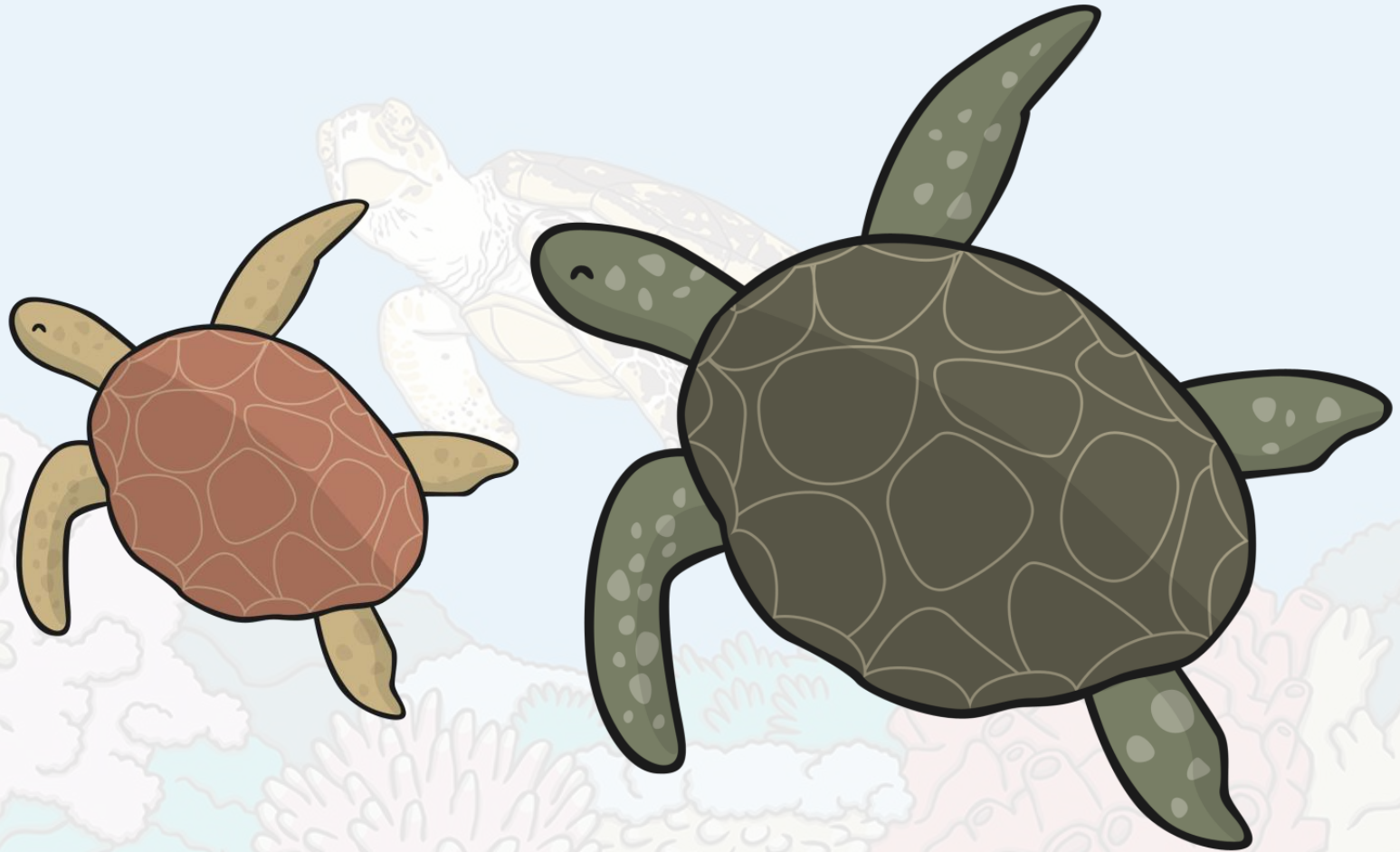


After fertilisation, the females will return to their feeding grounds and the eggs are left alone in their nests. The eggs will hatch in between 7-12 weeks.

The hatchlings wait for a cool night before emerging from their nests and crawling in to the sea.



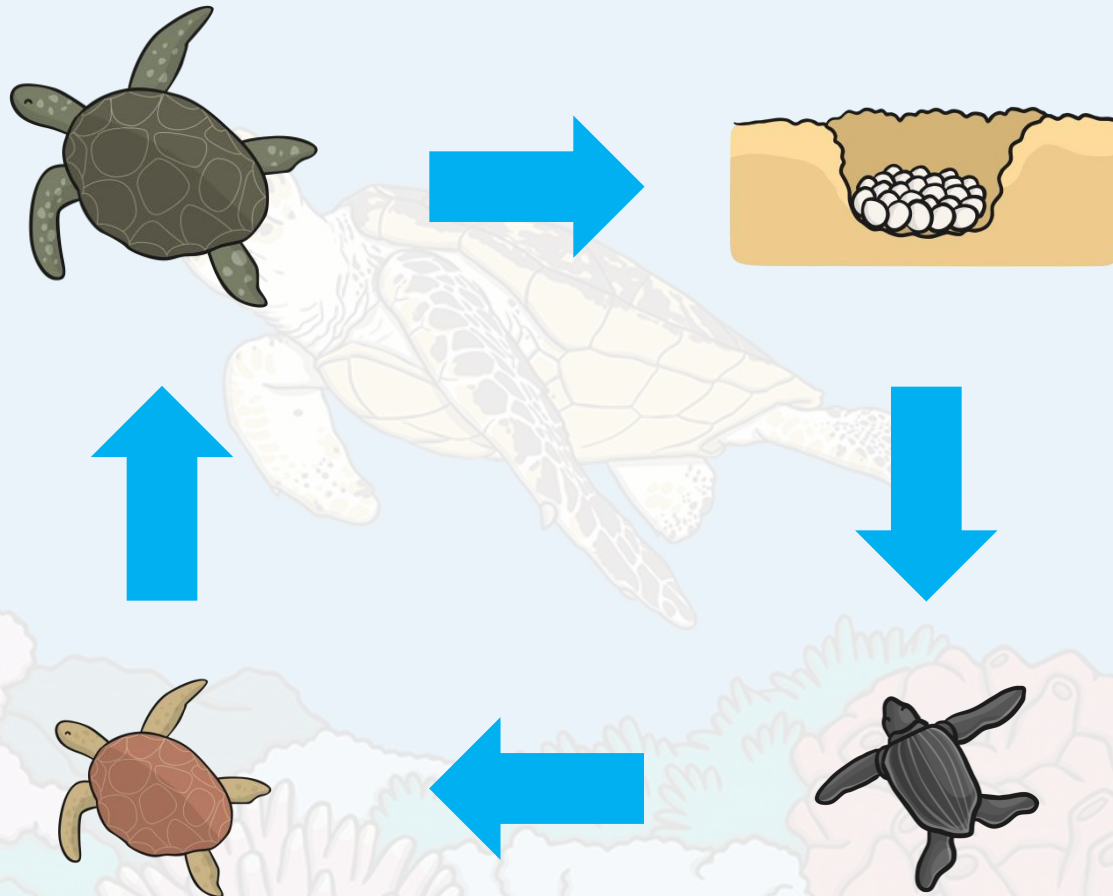
Young turtles are called juveniles and will join the adult turtles for breeding when they are about 5-10 years old.



Watch this video to see a Sea Turtle hatching.



Sea Turtle Life Cycle



Some Interesting Facts



A sea turtle's gender is determined by the temperature of its nest. Warmer nests produce females and cooler ones produce males.



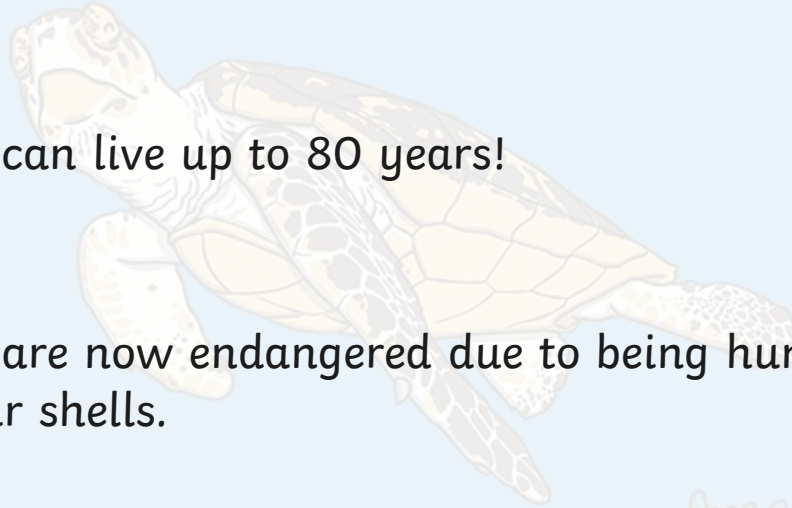
Sea turtles can live up to 80 years!

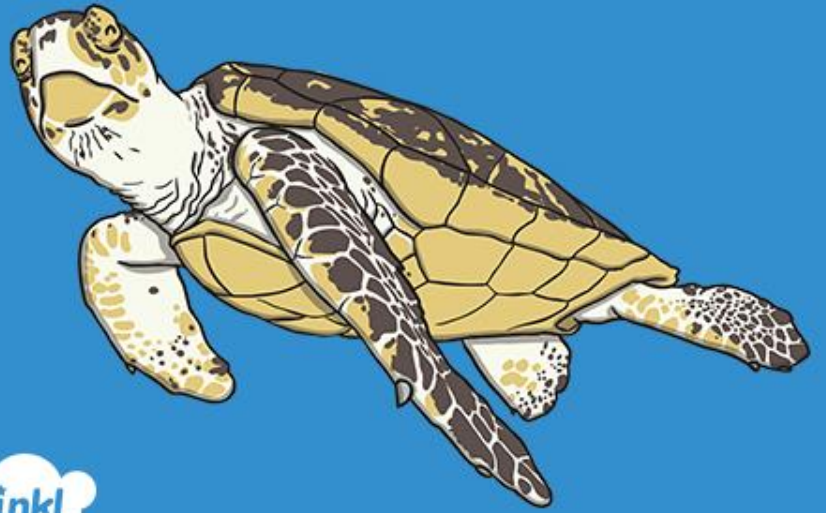


Sea turtles are now endangered due to being hunted for meat, eggs, oil and their shells.



Sea turtles 'hear' vibrations rather than sounds.





twinkl

