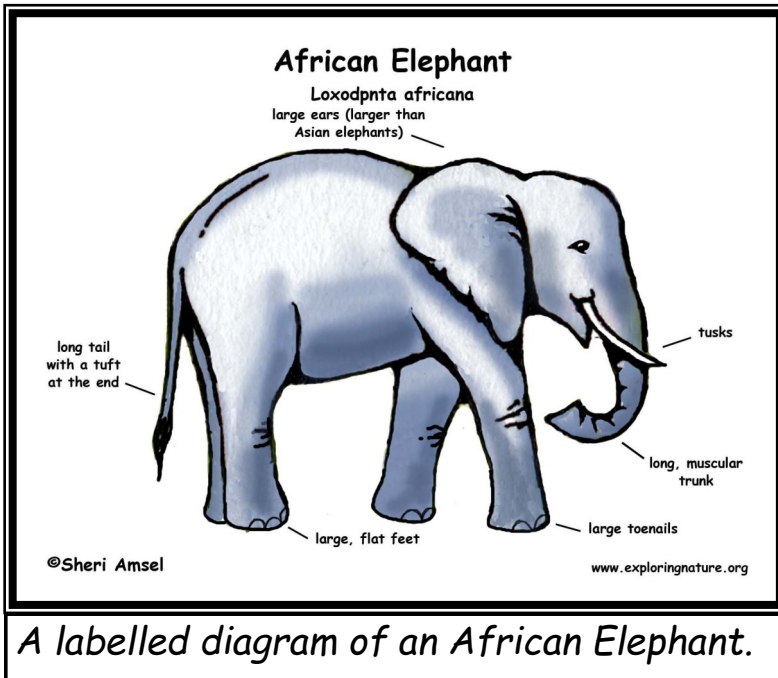


Excellent Elephants!



A labelled diagram of an African Elephant.

Introduction:

Have you ever wondered what the largest land mammal is? The African bush elephant can grow up to 13 ft tall and weigh almost 6 tonnes. That is around the same weight as 6 small cars! If you would like to find out more about this magnificent creature, then read on!

Main Features:

Most people think the elephant is just one species of animal. In fact, there are 3 species of elephant; the African bush elephant, the African forest elephant, and the Asian elephant. All elephants have large ears in order to help release excess body heat into the air. Additionally, their trunk is used for a variety of purposes. It helps elephants to breathe, smell, hold things, touch and produce the famous elephant trumpeting! Despite elephants being generally calm and peaceful, elephants can be extremely dangerous. Their tusks, which are made of ivory, are used to dig, move branches, and fight.

Diet:

Although they are an enormous animal, elephants are herbivores. Their main diet includes tree bark, flowers, leaves, wild fruits and twigs. Due to their size, adult elephants must consume around 150-170kg of food every day!

Current Status:

Unfortunately, some people poach elephants in order to take their tusks, which are made from a precious material called ivory. The ivory is then used to produce ornaments, jewellery, or other expensive objects. Elephant poaching was banned worldwide in 1990, but elephants are still being hunted down illegally. According to the WWF, around 55 African elephants are killed for their tusks every day.