

Signor Vivaldi

Canon a 3/4 cellos

Joachim Johow

2018

www.violump.de

Vivace $\text{♩} = 80$

mf

Measures 1-5: Bass clef, 3/4 time, key signature of one flat. Measure 1: G2, A2, B2. Measure 2: C3, D3, E3. Measure 3: F3, G3, A3. Measure 4: B3, C4, D4. Measure 5: E4, F4, G4. A 'V' marking is above measure 5.

6

Measures 6-8: Measure 6: A3, B3, C4. Measure 7: D4, E4, F4. Measure 8: G4, A4, B4. A sharp sign is above measure 7.

10

Measures 9-13: Measure 9: C5, B4, A4. Measure 10: G4, F4, E4. Measure 11: D4, C4, B3. Measure 12: A3, G3, F3. Measure 13: E3, D3, C3. Sharp signs are above measures 11 and 12.

14

Measures 14-17: Measure 14: B2, C3, D3. Measure 15: E3, F3, G3. Measure 16: A3, B3, C4. Measure 17: D4, E4, F4. Sharp signs are above measures 16 and 17.

18

Measures 18-23: Measure 18: E4, F4, G4. Measure 19: A4, B4, C5. Measure 20: D5, E5, F5. Measure 21: G5, A5, B5. Measure 22: C6, B5, A5. Measure 23: G5, F5, E5. Sharp signs are above measures 19 and 23.

24 **A**

mf

Measures 24-28: Measure 24: G2, A2, B2. Measure 25: C3, D3, E3. Measure 26: F3, G3, A3. Measure 27: B3, C4, D4. Measure 28: E4, F4, G4. A 'V' marking is above measure 28.

29

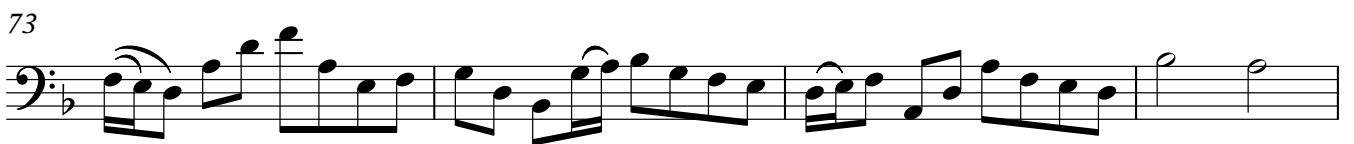
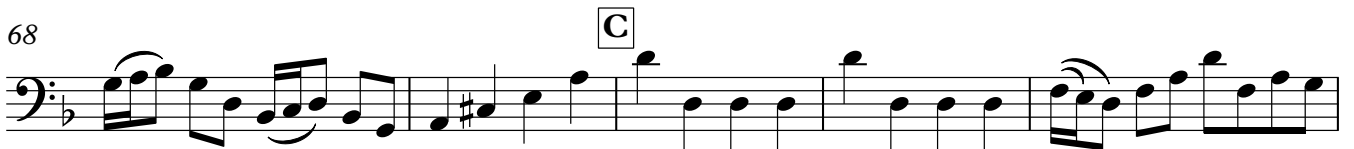
Measures 29-32: Measure 29: A3, B3, C4. Measure 30: D4, E4, F4. Measure 31: G4, A4, B4. Measure 32: C5, B4, A4. Sharp signs are above measures 30 and 32.

33

Measures 33-36: Measure 33: C5, B4, A4. Measure 34: G4, F4, E4. Measure 35: D4, C4, B3. Measure 36: A3, G3, F3. Sharp signs are above measures 35 and 36.

37

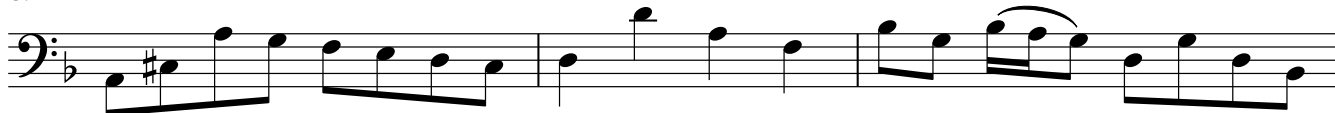
Measures 37-41: Measure 37: B2, C3, D3. Measure 38: E3, F3, G3. Measure 39: A3, B3, C4. Measure 40: D4, E4, F4. Measure 41: G4, A4, B4. Sharp signs are above measures 39 and 40.



85



89



92

