

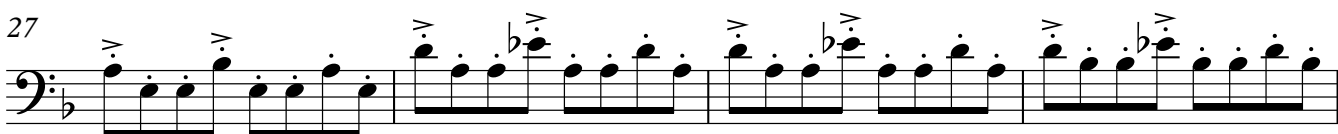
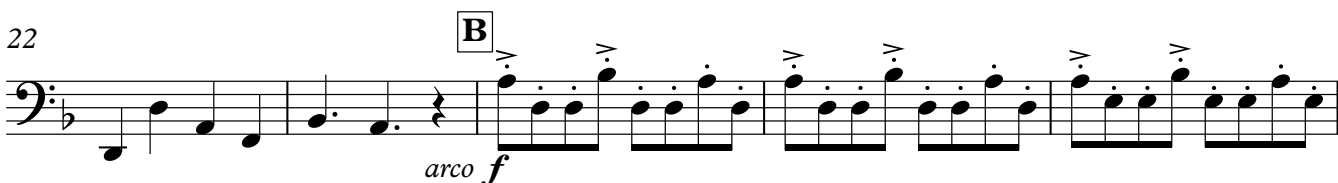
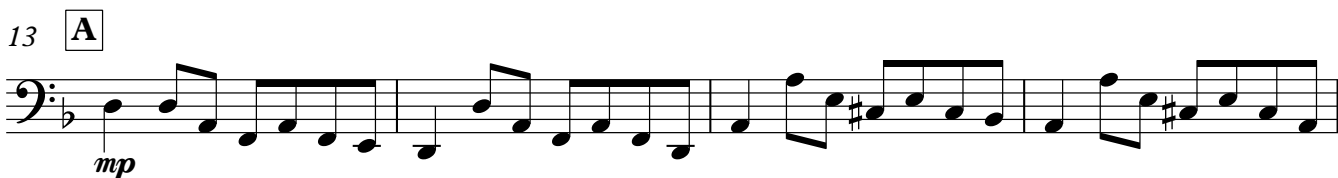
## Coffee break 52 Coriolan

Joachim Johow

2019

www.violump.de

Vivace



43 **D**

*mf*

This block contains measures 43 through 46. It begins with a dynamic marking of *mf*. The music consists of eighth-note patterns in a bass clef with a key signature of one flat. Measure 43 is marked with a boxed 'D'. Accents are present over the notes in each measure.

47

This block contains measures 47 through 50. The music continues with eighth-note patterns in a bass clef with a key signature of one flat. Accents are present over the notes in each measure.

51

This block contains measures 51 through 53. The music features some slurs and a key signature change to two sharps in measure 53. The notes are primarily eighth notes.

54 **E**

*f*

This block contains measures 54 through 57. It begins with a dynamic marking of *f* and a boxed 'E'. The music consists of eighth-note patterns in a bass clef with a key signature of one flat. Accents are present over the notes in each measure.

58

This block contains measures 58 through 61. The music continues with eighth-note patterns in a bass clef with a key signature of one flat. Accents are present over the notes in each measure.

62

This block contains measures 62 through 64. The music features some slurs and a key signature change to one flat in measure 64. The notes are primarily eighth notes.

65 **F**

*mp* *rit.* *p* *p*

This block contains measures 65 through 68. It begins with a dynamic marking of *mp* and a boxed 'F'. A *rit.* (ritardando) marking is present over measures 66 and 67. Dynamic markings of *p* are used in measures 67 and 68. The music consists of eighth-note patterns in a bass clef with a key signature of one flat. Accents are present over the notes in each measure.

69

*pp* *f*

This block contains measures 69 through 72. It begins with a dynamic marking of *pp*. A dynamic marking of *f* is present in measure 71. The music consists of eighth-note patterns in a bass clef with a key signature of one flat. Accents are present over the notes in each measure. The final measure (72) ends with a fermata.